



FINISHED MEASUREMENTS

Completed Blanket: Approximately 52" x 64" /
132 cm x 163 cm

Each Block: Approximately 12" / 30.5 cm square

YARN

BERROCO VINTAGE (100 g): 6 hanks of C1, 4 hanks of C2,
3 hanks each of C3 and C4, and 2 hanks of C5.

Sample colors shown: #5101 Mochi (C1), #5172 Calico
(C2), #51198 (C3), #5105 Oats (C4), #51183 Twilight (C5)

NEEDLES

See individual block patterns for needle sizes; most
blocks can be worked on straight or any length circular
needles, sizes 7 / 4.5 mm (smaller needle) and 8 / 5 mm
(larger needle) *or sizes to obtain gauge for each block; see
below for general gauge guideline.*

A few blocks are made in the round, and require double-
pointed needles (dpns), or preferred needles for working
small circumferences.

Edgings will require a long circular needle (smaller size).

NOTIONS

Stitch markers, tapestry needle, cable needle (cn)

GAUGE

Each block has its own gauge. However, to determine
which sizes to use for your smaller and larger size
needles, use the ball band gauges for Vintage:

Gauge #1: 20 sts and 27 rows = 4" / 10 cm in St st using
smaller needle

Gauge #2: 18 sts and 24 rows = 4" / 10 cm in St st using
larger needle

*Gauge is measured after blocking. To save time and ensure
accurate measurements, take time to check gauge.*

NOTE

Minor variations in block size—within about 1" / 2.5 cm
in either direction—are okay. Once the blocks are all
sewn together, these differences won't be noticeable.

BLOCKS BY MONTH/COLORS USED

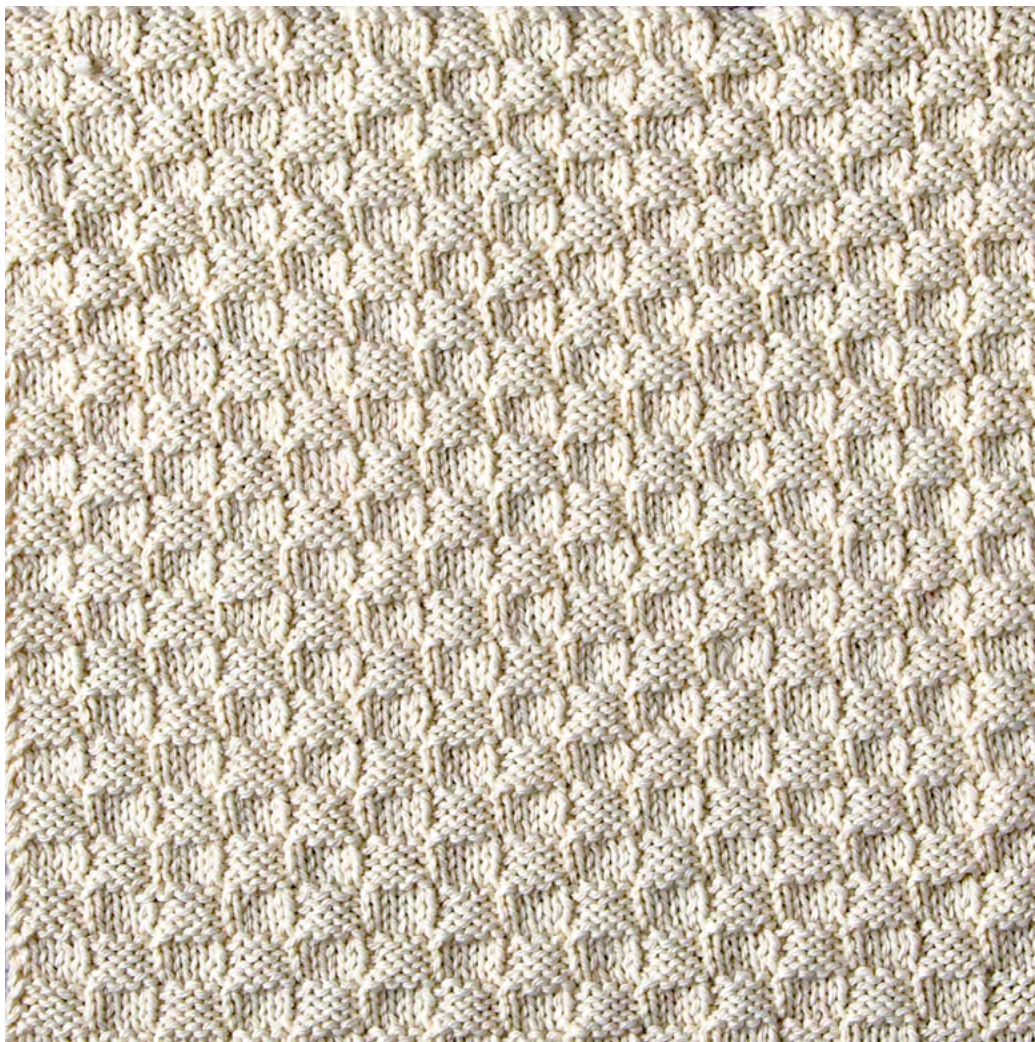
Month	Skill/Type	Color(s)
January	Texture #1	C1
January	Texture #2	C4
February	Striped (6)	All colors
March	Texture #3	C5
March	Intarsia	C2, C3, C1
April	Lace #1	C5
April	Lace #2	C2
May	Cable #1	C1
May	Cable #2	C5
June	Cable #3	C2
June	Mosaic	C2, C3
July	Cable #4	C1
August	Stranded #1	C4, C3, C5
September	Stranded #2	C1, C2, C4
October	Cable/Lace	C4
November	Seaming	
December	Border & Finishing	C1, C3

Berroco Vintage®

Find this Yarn

BLOCK #1–Texture

Designed by Jan Hurwitz / Skill Level: Easy



NEEDLES

Knitting needles, size 7 / 4.5 mm (smaller needles) *or size to obtain gauge*

GAUGE

20 sts and 29 rows = 4" / 10 cm in Pattern St using smaller needles

BLOCK #1 INSTRUCTIONS

Using C1, cast on 62 sts.

Rows 1 and 3 (RS): K5, * p4, k4; repeat from * 6 times more, k1.

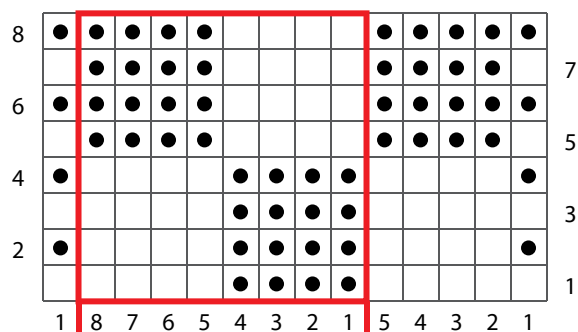
Rows 2 and 4: K1, * p4, k4; repeat from * 6 times more, p4, k1.

Rows 5 and 7: K1, p4, * k4, p4; repeat from * 6 times more, k1.

Rows 6 and 8: K1, * k4, p4; repeat from * 6 times more, k5.

Repeat Rows 1–8 until piece measures 12" / 30.5 cm from cast-on (approximately 88 rows, or 11 total repeats), end after completing a WS row. Bind off.

BLOCK 1 CHART



KEY TO CHART

- ☐ knit on RS, purl on WS
- ☒ purl on RS, knit on WS
- ☐ pattern repeat

CHART NOTES

Work from right to left on RS rows
and from left to right on WS rows.

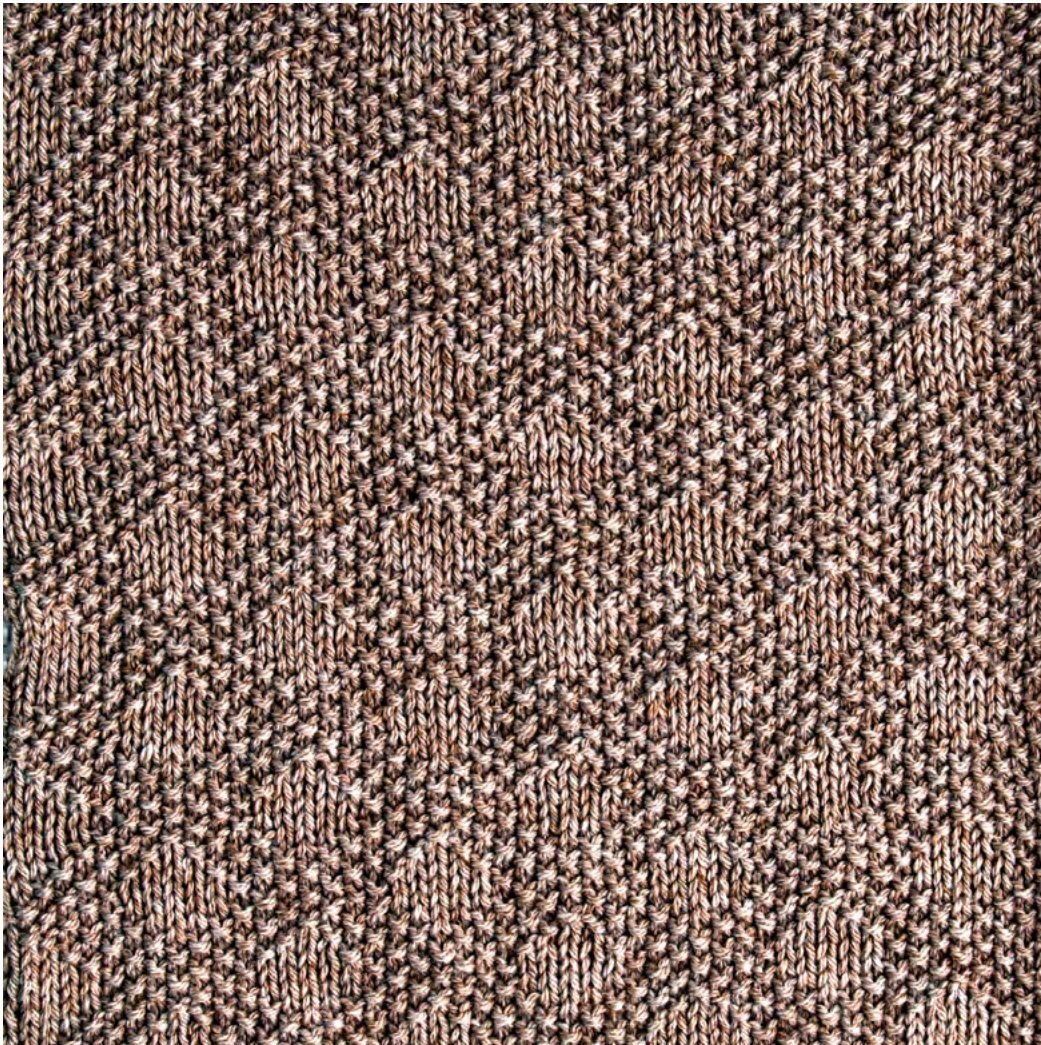
Learn to Knit from Charts!

Scan the QR code to find a video
from Design Director Alison Green
how to read basic knitting charts.



BLOCK #2–Texture

Designed by Åsa Buchta / Skill Level: Easy



NEEDLES

Knitting needles, size 7 / 4.5 mm (smaller needles) *or size to obtain gauge*

GAUGE

18 sts and 34 rows = 4" / 10 cm in pattern stitch

BLOCK #2 INSTRUCTIONS

With C4, cast on 55 sts.

Row 1 (WS): Purl.

Row 2 (RS): K9 * p1, k11; rep from * twice more, p1, k9.

Row 3: P8, * k1, p1, k1, p9; rep from * twice more, k1, p1, k1, p8.

Row 4: K7, * [p1, k1] twice, p1, k7; rep from * three times.

Row 5: P6, * [k1, p1] 3 times, k1, p5; rep from * twice more, [k1, p1] 3 times k1, p6.

Row 6: K5, * [p1, k1] 4 times, p1, k3; rep from * twice more, [p1, k1] 4 times, p1, k5.

Row 7: P4, [k1, p1] to the last 5 sts, k1, p4.

Row 8: K3, [p1, k1] twice, p1, * k3, [p1, k1] 4 times, p1; rep from * twice more, k3, [p1, k1] twice, p1, k3.

Row 9: P2, [k1, p1] twice, k1, * p5, [k1, p1] 3 times, k1; rep from * twice more, p5, [k1, p1] twice, k1, p2.

Row 10: [K1, p1] 3 times * k7, [p1, k1] twice, p1; rep from * twice more, k7, [p1, k1] 3 times.

Row 11: P2, [k1, p1] twice, k1, * p5, [k1, p1] 3 times, k1; rep from * twice more, p5, [k1, p1] twice, k1, p2.

Row 12: K3, [p1, k1] twice, p1, * k3, [p1, k1] 4 times, p1; rep from * twice more, k3, [p1, k1] twice, p1, k3.

Row 13: P4, [k1, p1] to the last 5 sts, k1, p4.

Row 14: K5, * [p1, k1] 4 times, p1, k3; rep from * twice more, [p1, k1] 4 times, p1, k5.

Row 15: P6, * [k1, p1] 3 times, k1, p5; rep from * twice more, [k1, p1] 3 times k1, p6.

Rep Rows 4–15 six times more.

Row 16: K7, * [p1, k1] twice, p1, k7; rep from * three times.

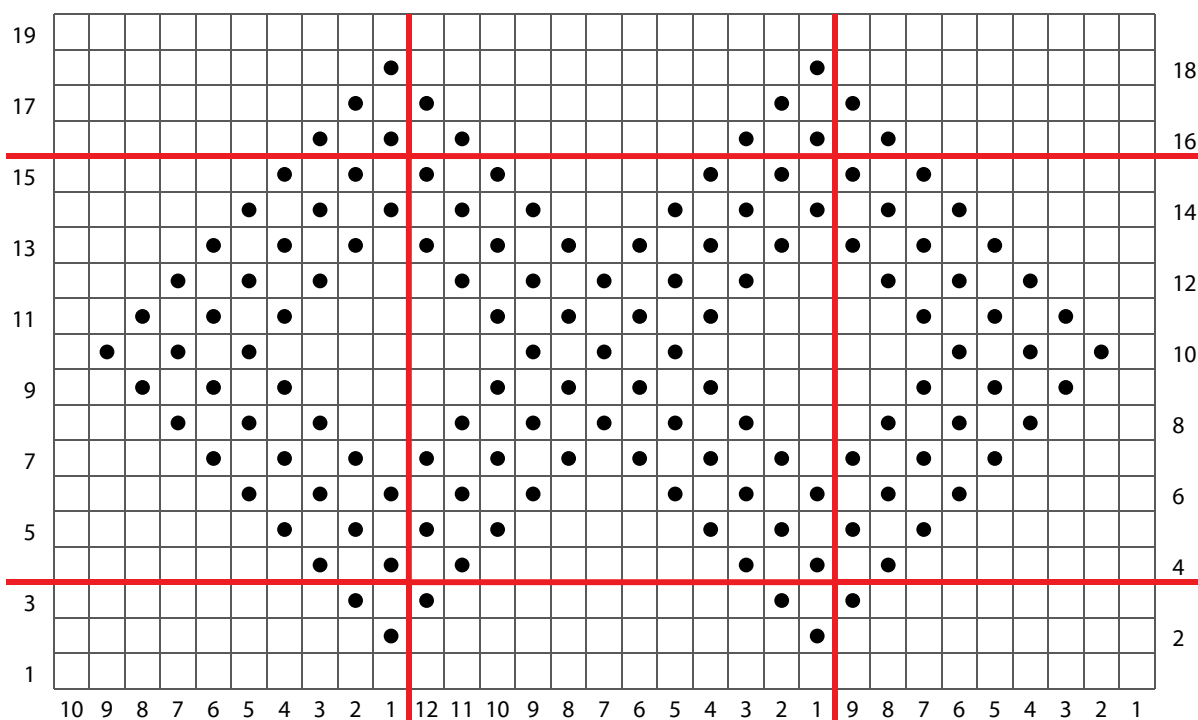
Row 17: P8, * k1, p1, k1, p9; rep from * twice more, k1, p1, k1, p8.

Row 18: K9 * p1, k11; rep from * twice more, p1, k9.

Row 19: Purl.

Bind off.

BLOCK 2 CHART



KEY TO CHART

- ☐ knit on RS; purl on WS
- ☒ purl on RS; knit on WS
- pattern repeat

CHART NOTES

Work from right to left on RS rows and from left to right on WS rows.

Work Rows 1–3 once, then work Rows 4–15 seven times, then work Rows 16–19 once.

STANDARD ABBREVIATIONS & TERMS

k: knit

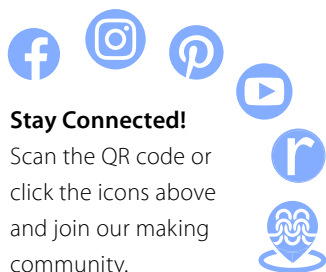
p: purl

rep: repeat

RS: right side

st(s): stitch(es)

WS: wrong side



Stay Connected!

Scan the QR code or
click the icons above
and join our making
community.



Share your project!

#berrocoyarn
#VintageMKAL25