

Ludlow

Designed by the Berroco Design Team / Skill level: Intermediate



FINISHED MEASUREMENTS
Approximately 12½" / 31 cm wide x
66" / 167.5 cm long

YARN
BERROCO RENEW (50 grs): 5 balls
#1330 Chinchilla

NEEDLES and NOTIONS
Knitting needles, size 7 / 4.5 mm or
size to obtain gauge
Cable needle (cn)

GAUGE
21 sts and 26 rows = 4" / 10 cm in
charted pattern
*Gauge is measured after blocking.
To save time and ensure accurate
measurements, take time to check
gauge*

Berroco Renew™

Find this Yarn 



BERROCO®

Yarn for all makers™



www.berroco.com



We recommend using yarns called for in our instructions. Every effort has been made to ensure that directions contained in this book are accurate and complete, however errors do occur. We cannot be responsible for variance of individual knitters, human or typographical errors.

All pattern PDFs are updated when corrections are made. In the event of finding an error, please make sure you've downloaded the most recent version.

SCARF

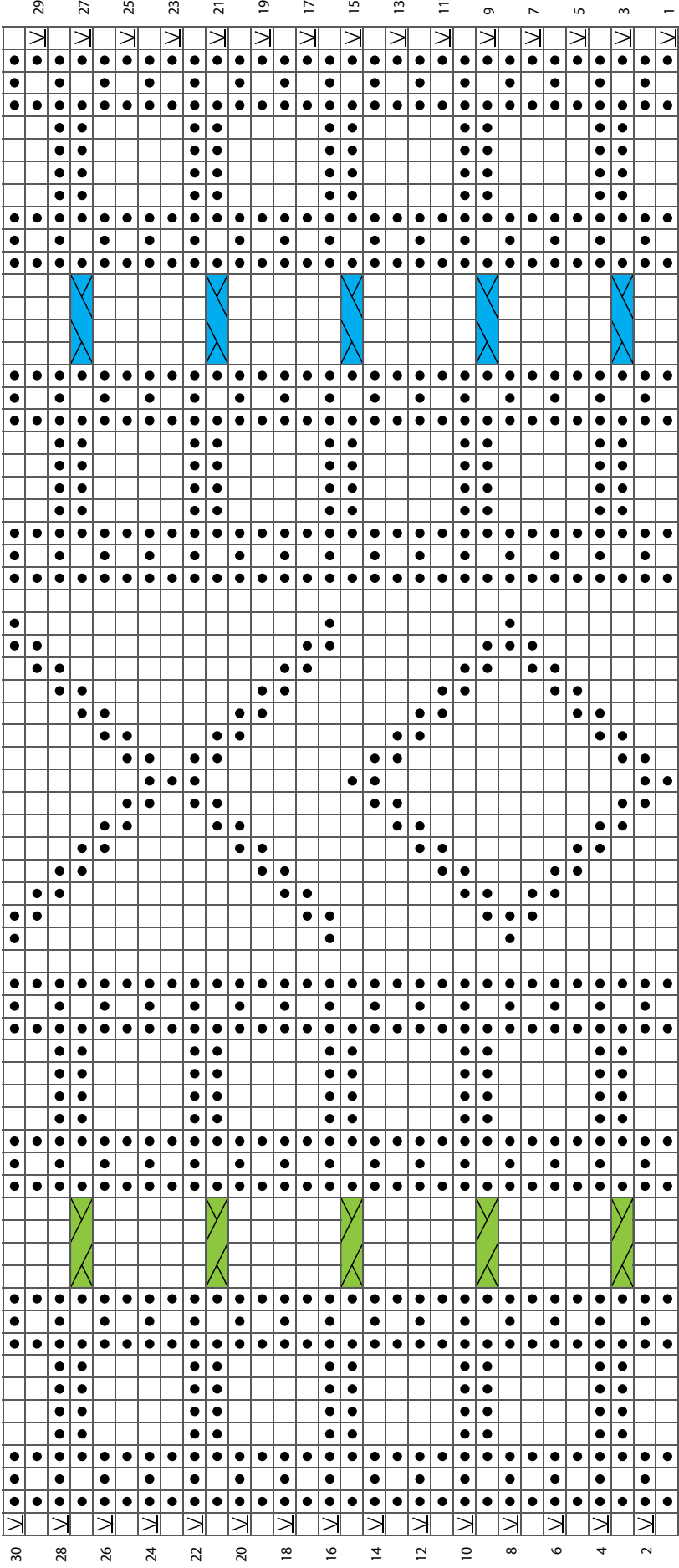
Cast on 67 sts. Knit 1 row. Begin working in pattern from chart. Repeat Rows 1–30 for pattern. Rep these 30 rows until piece measures approximately 66" / 167.5 cm from cast-on, end on WS. Bind off purlwise on RS.

FINISHING

Weave in all ends and block as desired.



LUDLOW SCARF CHART



KEY TO CHART

knit on RS; purl on WS

purl on RS; knit on WS

RS: slip as if to purl, with yarn in back
WS: slip as if to purl, with yarn in front

sl 2 to cn and hold to BACK, k2, k2 from cn

sl 2 to cn and hold to FRONT, k2, k2 from cn

CHART NOTES

Work from right to left on RS rows and
from left to right on WS rows.



STANDARD ABBREVIATIONS & TERMS

beg: beginning
CC: contrasting color
CDD: Centered Double Decrease—Slip 2 together (as if to k2tog), knit 1, pass the 2 slipped stitches over
cn: cable needle
dec: decrease
dpn(s): double pointed needle(s)
end on WS: end having just completed a Wrong Side row.
end on RS: end having just completed a Right Side row
Garter St: Knit EVERY row when working back and forth in rows. Knit 1 round, purl 1 round when working in the round.
inc: increase
k: knit
k tbl: knit through the back loop(s)
k2tog: knit 2 stitches together
k3tog: knit 3 stitches together
kfb: knit in the front and back of the next st
LH: left hand
LLI: Left Lifted Increase—Insert LH needle into the purl bump one row below the st just worked on the RH needle and knit into this st (1 st inc'd)
M1: Make 1—Pick up horizontal strand between stitch just worked and next stitch from front to back, place on left hand needle, knit this stitch through the back (1 stitch increased).
M1L: Make 1 Left—Work as for M1.
M1p: Make 1 purl—Pick up horizontal strand between stitch just worked and next stitch from front to back, place on left hand needle, purl this stitch through the back (1 stitch increased).
M1pL: Make 1 purl Left—Work as for M1p.
M1pR: Make 1 purl Right—Pick up horizontal strand between stitch just worked and next stitch from back to front, place on left hand needle, purl this stitch through the front (1 stitch increased).
M1R: Make 1 Right—Pick up horizontal strand between stitch just worked and next stitch from back to front, place on left hand needle, knit this stitch through the front (1 stitch increased).
MC: main color
p: purl
p tbl: purl through the back loop(s)
p2tog: purl 2 stitches together
p3tog: purl 3 stitches together
pat(s): pattern(s)
pm: place marker
pss: pass slipped stitch over knit stitch
rep: repeat

Rev St st: Reverse Stockinette Stitch—Purl 1 row, knit 1 row alternately when working back and forth in rows. The purl side is the right side of the work. Purl EVERY round when working in the round.

RH: right hand

RLI: Right Lifted Increase—Insert RH needle into the purl bump of the next st on the LH needle and knit into this st (1 st inc'd)

rnd(s): round(s)

RS: right side

sl: slip

sm: slip marker

SSK: Slip 2 stitches knitwise, insert point of left hand needle through fronts of these 2 stitches and knit 2 together.

SSP: Slip 2 stitches knitwise, transfer these 2 stitches back to left hand needle, purl 2 together through the back loops.

SSSK: Slip 3 stitches knitwise, insert point of left hand needle through fronts of these 3 stitches and knit 3 together.

st(s): stitch(es)

St st: Stockinette Stitch—Knit 1 row, purl 1 row alternately when working back and forth in rows. The knit side is the right side of work. Knit EVERY round when working in the round.

tbl: through back loop(s)

w&t: wrap and turn, a method of concealing a hole created in short row shaping. On RS rows: With yarn held in front, slip next stitch purlwise, then bring yarn between needles to the back. Slip that same stitch back to the left needle. Turn your work. On WS Rows: With yarn held in back, slip next stitch purlwise, then bring yarn between needles to the front. Slip that same stitch back to the left needle. Turn your work. Unless otherwise indicated, each time you come to a wrapped stitch when working subsequent rows, slip the wrap back over stitch and onto needle, then work the wrap together with its accompanying stitch.

WS: wrong side

wyib: with yarn in back

wyif: with yarn in front

yo: yarn over

QUESTIONS?

Scan the QR code for the Berroco Learning Center where you will find our fit guide, how-to videos, the complete glossary and more.

