

# Leyla

version 2

Designed by Margaux Hufnagel / Skill level: Intermediate



## SIZES

(1, 2, 3) [4, 5, 6] {7, 8, 9}

## FINISHED MEASUREMENTS

Bust: (36, 40, 44) [48, 52, 56] {60, 64, 68}" / (91.5, 101.5, 112) [122, 132, 142] {152.5, 162.5, 172.5} cm

Length: (21, 21, 21½) [21½, 22, 22] {22½, 23, 23½}" / (53.5, 53.5, 54.5) [54.5, 56, 56] {57, 58.5, 59.5} cm

Shown in size 44" / 112 cm.

Recommended ease:

Approximately 2–4" / 5–10 cm positive ease.

## YARN

**BERROCO MISTICO** (50 g): (6, 7, 8) [8, 9, 10] {10, 11, 12} balls #2548 Comical

## NEEDLES

Knitting needles, sizes 5 / 3.75 mm and 7 / 4.5 mm *or size to obtain gauge*

32" / 80 cm circular needle, size 5 / 3.75 mm

## NOTIONS

Five ¾" buttons

Cable needle

Tapestry Needle

## GAUGE

20 sts and 29 rows = 4" / 10 cm in St st on larger needles

24 sts and 29 rows = 4" / 10 cm over cables on larger needles

*Gauge shown is after blocking.*

*To save time and ensure accurate measurements, take time to check gauge.*

**Berroco Mistico™**

Find this Yarn 



# BERROCO®



[www.berroco.com](http://www.berroco.com)



*We recommend using yarns called for in our instructions. Every effort has been made to ensure that directions contained in this pattern are accurate and complete, however errors do occur. We cannot be responsible for variance of individual knitters, human or typographical errors.*

*All pattern PDFs are updated when corrections are made. In the event of finding an error, please make sure you've downloaded the most recent version.*

## NOTE

Cardigan is worked in pieces from the bottom up with set in sleeves. Sleeves have a balloon effect with long cuffs and a gathered cap.

Cardigan has v-neck shaping and picked up ribbed front/neckband.

## INSTRUCTIONS

### BACK

With smaller needles, cast on (105, 115, 129) [139, 149, 165] {175, 185, 195} sts.

**Set Up Rib: Row 1 (WS):** P1, \* k1, p1; rep from \* across.

**Row 2 (RS):** K1, \* p1, k1; rep from \* across.

Rep these 2 rows until piece measures 2" / 5 cm, end on WS, dec 1 st at end of last row. (104, 114, 128) [138, 148, 164] {174, 184, 194} sts

Change to larger needles.

**For Sizes 1 and 2 ONLY: Establish Charts: Row 1 (RS):**

Knit (10, 15, X) [X, X, X] {X, X, X}, pm, p2, k2, p2, work Row 1 of Chart A over 12 sts, p2, k2, p2, work Row 1 of Chart C over 6 sts, p2, k2, p2, work Row 1 of Chart A over 12 sts, p2, k2, p2, work Row 1 of Chart B over 6 sts, p2, k2, p2, work Row 1 of Chart A over 12 sts, p2, k2, p2, pm, knit to end.

**Row 2 (WS):** Purl to first marker, sm, k2, p2, k2, work Row 2 of Chart A over 12 sts, k2, p2, k2, work Row 2 of Chart B over 6 sts, k2, p2, k2, work Row 2 of Chart A over 12 sts, k2, p2, k2,



work row 1 of Chart C over 6 sts, k2, p2, k2, work Row 2 of Chart A over 12 sts, k2, p2, k2, sm, purl to end.

**For Sizes 3, 4, and 5 ONLY: Establish Charts: Row 1 (RS):**

Knit (X, X, 10) [15, 20, X] {X, X, X}, pm, p2, k2, p2, \* work Row 1 of Chart B over 6 sts, p2, k2, p2, work Row 1 of Chart A over 12 sts, p2, k2, p2, work Row 1 of Chart C over 6 sts, p2, k2, p2, \* work Row 1 of Chart A over 12 sts, p2, k2, p2; rep from \* to \* once more, pm, knit to end.

**Row 2:** Purl to first marker, sm, k2, p2, k2, \* work Row 2 of Chart C over 6 sts, k2, p2, k2, work Row 2 of Chart A over 12 sts, k2, p2, k2, work Row 2 of Chart B over 6 sts, k2, p2, k2, \* work Row 2 of Chart A over 12 sts, k2, p2, k2, rep from \* to \* once more, sm, purl to end.

**For Sizes 6, 7, 8, and 9 ONLY: Establish Charts: Row 1 (RS):**

Knit (X, X, X) [X, X, 10] {15, 20, 25}, pm, p2, k2, p2, \* work Row 1 of Chart A over 12 sts, p2, k2, p2, work Row 1 of Chart B over 6 sts, p2, k2, p2, work Row 1 of Chart A over 12 sts, p2, k2, p2, work Row 1 of Chart C over 6 sts, p2, k2, p2; rep from \* once more, work Row 1 of Chart A over 12 sts, p2, k2, p2, pm, knit to end.

**Row 2:** Purl to first marker, sm, k2, p2, k2, \* work Row 2 of Chart A over 12 sts, k2, p2, k2, work Row 2 of Chart C over 6 sts, k2, p2, k2, work Row 2 of Chart A over 12 sts, k2, p2, k2, work Row 2 of Chart B over 6 sts, k2, p2, k2; rep from \* once





more, work Row 2 of Chart A over 12 sts, k2, p2, k2, sm, purl to end.

**For ALL Sizes:** Work even in pat as established until piece measures 12" / 30.5 cm from cast-on, end after completing a WS row.

**Shape Armholes:** Bind off (5, 7, 5) [7, 8, 5] {7, 8, 12} sts at beginning of the next 2 rows. (94, 100, 118) [124, 132, 154] {160, 168, 170} sts

**Dec Row (RS):** K1, k2tog, work in patt to the last 3 sts, SSK, k1. 2 sts dec'd

Continuing to work in pat as established, rep Dec Row every RS row (4, 7, 4) [7, 11, 4] {7, 11, 12} times more. (84, 84, 108) [108, 108, 144] {144, 144, 144} sts

Work even in pat as established until armhole measures (8, 8, 8½) [8½, 9, 9] {9½, 10, 10½}" / (20.5, 20.5, 21.5) [21.5, 23, 23] {24, 25.5, 26.5} cm from underarm bind-off, end after completing a WS row.

**Shape Shoulders:** Bind off (6, 6, 9) [9, 9, 13] {13, 13, 13} sts at beginning of the next (4, 4, 4) [2, 2, 6] {4, 4, 4} rows, then (5, 5, 8) [8, 12, 12] {12, 12, 12} sts at beginning of the next (4, 4, 4) [6, 4, 2] {4, 4, 4} rows. Bind off remaining (40, 40, 40) [42, 42, 42] {44, 44, 44} sts for back neck.

## LEFT FRONT

With smaller needles, cast on (47, 51, 59) [63, 69, 77] {81, 87, 91} sts.

Work in ribbing as for back for 2" / 5 cm, end on WS, dec (1, 0, 1) [0, 1, 1] {0, 1, 0} st(s) at end of the last row. (46, 51, 58) [63, 68, 76] {81, 86, 91} sts

Change to larger needles.

**For Sizes 1 and 2 ONLY: Establish Charts: Row 1 (RS):** Knit (10, 15, X) [X, X, X] {X, X, X}, pm, p2, k2, p2, work Row 1 of Chart A over 12 sts, p2, k2, p2, work Row 1 of Chart C over 6 sts, p2, k2, p2.

**Row 2:** K2, p2, k2, work Row 2 of Chart C over 6 sts, k2, p2, k2, work Row 2 of Chart A over 12 sts, k2, p2, k2, sm, purl to end.

**For Sizes 3, 4, and 5 ONLY: Establish Charts: Row 1 (RS):** Knit (X, X, 10) [15, 20, X] {X, X, X}, pm, p2, k2, p2, work Row 1 of Chart B over 6 sts, p2, k2, p2, work Row 1 of Chart A over 12 sts, p2, k2, p2, work Row 1 of Chart C over 6 sts, p2, k2, p2.

**Row 2:** K2, p2, k2, work Row 2 of Chart C over 6 sts, k2, p2, k2, work Row 2 of Chart A over 12 sts, k2, p2, k2, work Row 2 of Chart B over 6 sts, k2, p2, k2, sm, purl to end.

**For Sizes 6, 7, 8, and 9 ONLY: Establish Charts: Row 1 (RS):** Knit (X, X, X) [X, X, 10] {15, 20, 25}, pm, p2, k2, p2, work Row 1 of Chart A over 12 sts, p2, k2, p2, work Row 1 of Chart B over 6 sts, p2, k2, p2, work Row 1 of Chart A over 12 sts, p2, k2, p2, work Row 1 of Chart C over 6 sts, p2, k2, p2.

**Row 2:** K2, p2, k2, work Row 2 of Chart C over 6 sts, k2, p2, k2, work Row 2 of Chart A over 12 sts, k2, p2, k2, work Row 2 of Chart B over 6 sts, k2, p2, k2, work Row 2 of Chart A over 12 sts, k2, p2, k2, sm, purl to end.

**For ALL Sizes:** Work even in pat as established until piece measures 12" / 30.5 cm from cast-on, end after completing a WS row.

**Shape Armhole:** Bind off (5, 7, 5) [7, 8, 5] {7, 8, 12} sts at beginning of the next RS row, then work in pat as established to end. (41, 44, 53) [56, 60, 71] {74, 78, 79} sts  
Work 1 WS row in pat as established.

**Dec Row (RS):** K1, k2tog, work in pat as established to end. 1 st dec'd

Rep Dec Row every RS row (4, 7, 4) [7, 11, 4] {7, 11, 12} times more. AT THE SAME TIME, when armhole measures 1" / 2.5 cm from underarm bind-off, end on WS. Mark beginning of last row for beginning of neck shaping.

**Shape V-Neck: Dec Row (RS):** Continuing to decrease at armhole edge as directed, work to the last 3 sts, SSK, k1. 1 st dec'd at neck

**Note:** As you decrease into cables, if there are not enough stitches to work an entire cable twist, work the extra stitches in St st.

Still continuing to work armhole decs if necessary, dec 1 st at neck edge every RS row (13, 13, 13) [14, 14, 14] {15, 15, 15} times more. (22, 22, 34) [33, 33, 51] {50, 50, 50} sts

Work even until armhole measures (8, 8, 8½) [8½, 9, 9] {9½, 10, 10½}" / (20.5, 20.5, 21.5) [21.5, 23, 23] {24, 25.5, 26.5} cm from underarm bind-off, end after completing a WS row.

**Shape Shoulder:** Bind off (6, 6, 9) [9, 9, 13] {13, 13, 13} sts at beginning of the next (2, 2, 2) [1, 1, 3] {2, 2, 2} RS rows, then (5, 5, 8) [8, 8, 12] {12, 12, 12} sts at beginning of the next (2, 2, 2) [3, 3, 1] {2, 2, 2} RS rows. Fasten off.

## RIGHT FRONT

Work as for Left Front until ribbing has been completed.

(46, 51, 58) [63, 68, 76] {81, 86, 91} sts

Change to larger needles.

**For Sizes 1 and 2 ONLY: Establish Charts: Row 1 (RS):** P2, k2, p2, work Row 1 of Chart B over 6 sts, p2, k2, p2, work Row 1 of Chart A over 12 sts, p2, k2, p2, pm, knit to end.

**Row 2:** Purl to marker, sm, k2, p2, k2, work Row 2 of Chart A over 12 sts, k2, p2, k2, work Row 2 of Chart B over 6 sts, k2, p2, k2.

**For Sizes 3, 4, and 5 ONLY: Establish Charts: Row 1 (RS):** P2, k2, p2, work Row 1 of Chart B over 6 sts, p2, k2, p2, work Row 1 of Chart A over 12 sts, p2, k2, p2, work Row 1 of Chart C over 6 sts, p2, k2, p2, pm, knit to end.

**Row 2:** Purl to marker, sm, k2, p2, k2, work Row 2 of Chart C over 6 sts, k2, p2, k2, work Row 2 of Chart A over 12 sts, k2, p2, k2, work Row 2 of Chart B over 6 sts, k2, p2, k2.

**For Sizes 6, 7, 8, and 9 ONLY: Establish Charts: Row 1 (RS):** P2, k2, p2, work Row 1 of Chart B over 6 sts, p2, k2, p2, work Row 1 of Chart A over 12 sts, p2, k2, p2, work Row 1 of Chart C over 6 sts, p2, k2, p2, work Row 1 of Chart A over 12 sts, p2, k2, p2, pm, knit to end.

**Row 2:** Purl to marker, sm, k2, p2, k2, work Row 2 of Chart A over 12 sts, k2, p2, k2, work Row 2 of Chart C over 6 sts, k2, p2, k2, work row 2 of Chart A over 12 sts, k2, p2, k2, work Row 2 of Chart B over 6 sts, k2, p2, k2.

**For ALL Sizes:** Work even in pattern as established until piece measures 12" / 30.5 cm from cast-on, end after completing a RS row.

**Shape Armhole:** Bind off (5, 7, 5) [7, 8, 5] {7, 8, 12} sts at beginning of the next WS row, then work in pat as established to end. (41, 44, 53) [56, 60, 71] {74, 78, 79} sts

**Dec Row (RS):** Work in pat as established to the last 3 sts, SSK, k1. 1 st dec'd

Rep Dec Row every RS row (4, 7, 4) [7, 11, 4] {7, 11, 12} times more. AT THE SAME TIME, when armhole measures 1" / 2.5 cm from underarm bind-off, end after completing a WS row. Mark end of last row for beginning of neck shaping.



**Shape V-Neck: Dec Row (RS):** K1, k2tog, work in pat as established to end, continuing to decrease at armhole edge as directed. 1 st dec'd at neck

**Note:** As you decrease into cables, if there are not enough stitches to work an entire cable twist, work the extra stitches in St st.

Still continuing to work armhole decs if necessary, dec 1 st at neck edge every RS row (13, 13, 13) [14, 14, 14] {15, 15, 15} times more. (22, 22, 34) [33, 33, 51] {50, 50, 50} sts Work even until armhole measures (8, 8, 8½) [8½, 9, 9] {9½, 10, 10½}" / (20.5, 20.5, 21.5) [21.5, 23, 23] {24, 25.5, 26.5} cm from bind-off, end after completing a RS row.

**Shape Shoulder:** Bind off (6, 6, 9) [9, 9, 13] {13, 13, 13} sts at beginning of the next (2, 2, 2) [1, 1, 3] {2, 2, 2} WS rows, then (5, 5, 8) [8, 8, 12] {12, 12, 12} sts at beginning of the next (2, 2, 2) [3, 3, 1] {2, 2, 2} WS rows. Fasten off.

## SLEEVES

With smaller needles, cast on (41, 41, 41) [43, 43, 43] {49, 49, 49} sts.

**Set Up Rib: Row 1 (WS):** P1, \* k1, p1; rep from \* to end.

**Row 2 (RS):** K1, \* p1, k1; rep from \* to end.

Rep these 2 rows until piece measures 3" / 7.5 cm from cast-on, end with a RS row, dec (1, 1, 1) [0, 0, 0] {1, 1, 1} st(s)

at end of last row. (40, 40, 40) [43, 43, 43] {48, 48, 48} sts

Change to larger needles.

**Inc Row (WS):** Purl in front and back of each stitch across.

(80, 80, 80) [86, 86, 86] {96, 96, 96} sts

**Establish Charts: Row 1 (RS):** Knit (20, 20, 20) [23, 23, 23] {28, 28, 28}, pm, p2, work Row 1 of Chart B over 6 sts, p2, k2, p2, work Row 1 of Chart A over 12 sts, p2, k2, p2, work Row 1 of Chart C over 6 sts, p2, pm, knit (20, 20, 20) [23, 23, 23] {28, 28, 28}.

**Row 2:** Purl to first marker, sm, k2, work Row 2 of Chart C over 6 sts, k2, p2, k2, work Row 2 of Chart A over 12 sts, k2, p2, k2, work Row 2 of Chart B over 6 sts, k2, sm, purl to end. Work even in pattern as established until sleeve measures 18" / 45.5 cm from cast-on, end after completing a WS row.

**Shape Cap:** Bind off (5, 7, 5) [7, 8, 5] {7, 8, 12} sts at beginning of the next 2 rows. (70, 66, 70) [72, 70, 76] {82, 80, 72} sts

**Dec Row (RS):** K1, k2tog, knit to last 3 sts, SSK, k1. 2 sts dec'd Rep Dec Row every RS row 4 times more. (60, 56, 60) [62, 60, 66] {72, 70, 62} sts

Work even until cap measures (6½, 6½, 7) [7, 7½, 7½] {8, 8½, 9}" / (16.5, 16.5, 18) [18, 19, 19] {20.5, 21.5, 23} cm from bind-offs, end after completing a WS row.

**Gather Top: Dec Row 1 (RS):** \* K2tog; rep from \* across.

(30, 28, 30) [31, 30, 33] {36, 35, 31} sts

Purl 1 WS row.

**Dec Row 2 (RS):** Knit (0, 0, 0) [1, 0, 1] {0, 1, 1}, \* k2tog; rep from \* across. (15, 14, 15) [16, 15, 17] {18, 18, 16} sts

Bind off purlwise.

## FINISHING

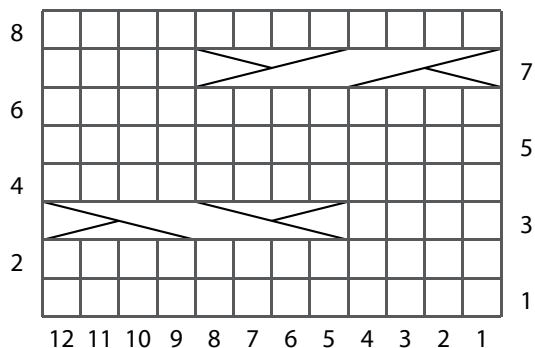
Sew shoulder seams. Sew on sleeves, easing in caps at top if necessary. Sew side and sleeve seams.

**Front/Neck Bands:** With RS facing, using smaller needle, begin at lower right front edge, pick up and knit 60 sts (approximately 3 sts over 4 rows) along right front edge to marker, (43, 43, 45) [45, 47, 47] {49, 51, 53} sts along right front neck edge, (41, 41, 41) [43, 43, 43] {45, 45, 45} sts across back neck edge, (43, 43, 45) [45, 47, 47] {49, 51, 53} sts along left front neck edge to marker, then 60 sts along left front edge. (247, 247, 251) [253, 257, 257] {263, 267, 271} sts Work in ribbing as for back for 3 rows, end after completing a WS row.

**Buttonhole Row (RS):** Work 4 sts, k2tog, yo, \* work 11 sts, k2tog, yo; rep from \* 3 times more, work to end. 5 buttonholes made

Continue working in ribbing as established until band measures 1" / 2.5 cm, end after completing a WS row. Bind off loosely in ribbing. Weave in all ends and block as desired. Sew on buttons.

CHART A



## CHART NOTES

Work from right to left on RS rows  
and from left to right on WS rows.

CHART B

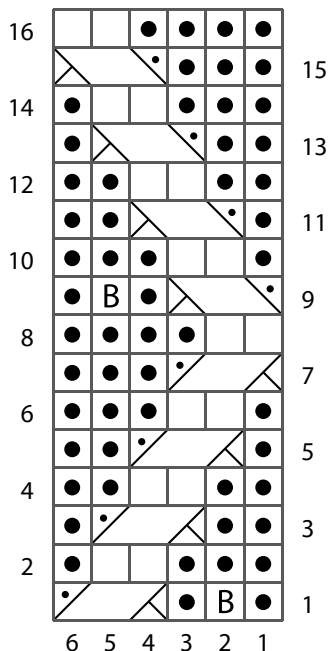
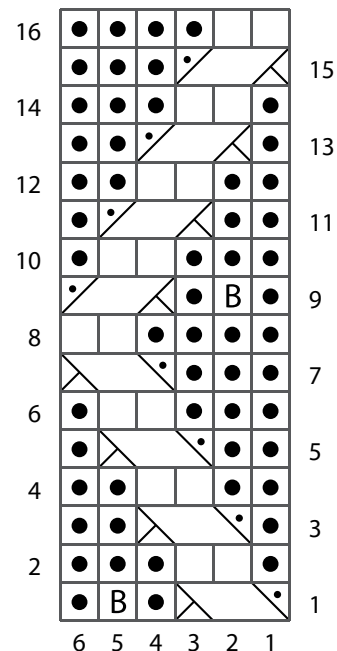


CHART C



## KEY TO CHARTS

 knit on RS; purl on WS


 purl on RS; knit on WS

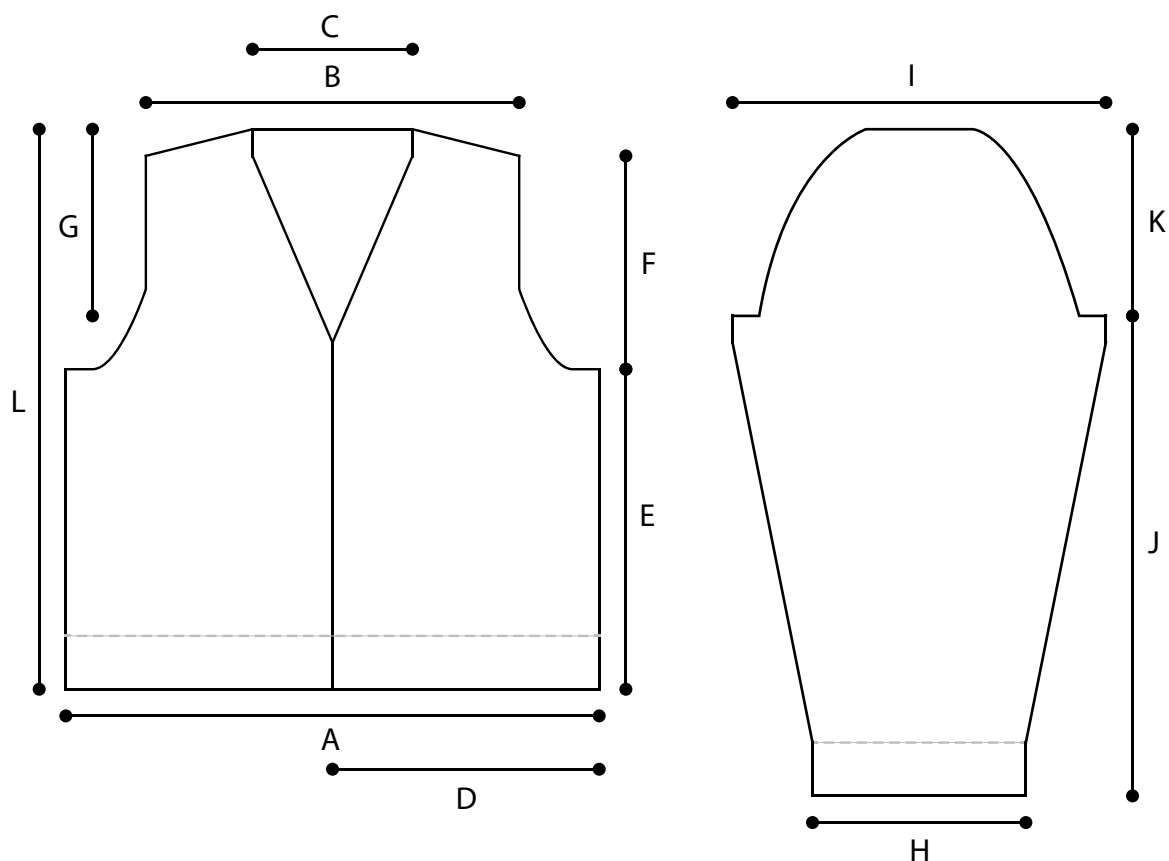
 sl 4 to cn and hold to FRONT, k4, k4 from cn

 sl 4 to cn and hold to BACK, k4, k4 from cn

 sl 2 to cn and hold to FRONT, p1, k2 from cn

 sl 1 to cn and hold to BACK, k2, p1 from cn

 make bobble: knit into the front, back, and front of the same stitch, turn. P3, turn, k3, turn, p3, turn; sl 1, k2tog, pss—1 st remains



## LEYLA MEASUREMENTS

- A** (Back Width): (18, 20, 22) [24, 26, 28] {30, 32, 34}" / 45.5, 51, 56 [61, 66, 71] {76, 81.5, 86.5} cm
- B** (Cross-Back Width): (13½, 13½, 17½) [18, 18, 23½] {24, 24, 24}" / (34.5, 34.5, 44.5) [45.5, 45.5, 59.5] {61, 61, 61} cm
- C** (Back Neck Width): (6½, 6½, 6½) [7, 7, 7] {7½, 7½, 7½}" / (16.5, 16.5, 16.5) [18, 18, 18] {19, 19, 19} cm
- D** (Front Width): (8¼, 9¼, 10¼) [11¼, 12¼, 13¼] {14¼, 15¼, 16¼}" / (21, 23.5, 26) [28.5, 31, 33.5] {36, 38.5, 41.5} cm
- E** (Length to Underarms): 12" / 30.5 cm
- F** (Armhole Length): (8, 8, 8½) [8½, 9, 9] {9½, 10, 10½}" / (20.5, 20.5, 21.5) [21.5, 23, 23] {24, 25.5, 26.5} cm
- G** (Front Neck Depth): (7, 7, 7½) [7½, 8, 8] {8½, 9, 9½}" / (18, 18, 19) [19, 20.5, 20.5] {21.5, 23, 24} cm
- H** (Sleeve Cuff Width): (8, 8, 8) [8½, 8½, 8½] {9½, 9½, 9½}" / (20.5, 20.5, 20.5) [21.5, 21.5, 21.5] {24, 24, 24} cm
- I** (Sleeve Width): (14, 14, 14) [16, 16, 16] {18, 18, 18}" / (35.5, 35.5, 35.5) [40.5, 40.5, 40.5] {45.5, 45.5, 45.5} cm
- J** (Sleeve Length): 18" / 45.5 cm
- K** (Cap Length): (6½, 6½, 7) [7, 7½, 7½] {8, 8½, 9}" / (16.5, 16.5, 18) [18, 19, 19] {20.5, 21.5, 23} cm
- L** (Total Length): (21, 21, 21½) [21½, 22, 22] {22½, 23, 23½}" / (53.5, 53.5, 54.5) [54.5, 56, 56] {57, 58.5, 59.5} cm



## STANDARD ABBREVIATIONS & TERMS

**beg:** beginning  
**BOR:** beginning of round  
**CC:** contrasting color  
**CDD:** Centered Double Decrease—Slip 2 together (as if to k2tog), knit 1, pass the 2 slipped stitches over  
**cn:** cable needle  
**dec:** decrease  
**dpn(s):** double pointed needle(s)  
**end on WS:** end having just completed a Wrong Side row.  
**end on RS:** end having just completed a Right Side row  
**Garter St:** Knit EVERY row when working back and forth in rows. Knit 1 round, purl 1 round when working in the round.  
**inc:** increase  
**k:** knit  
**k tbl:** knit through the back loop(s)  
**k2tog:** knit 2 stitches together  
**k3tog:** knit 3 stitches together  
**kfb:** knit in the front and back of the next st  
**LH:** left hand  
**LLI:** Left Lifted Increase—Insert LH needle into the purl bump one row below the st just worked on the RH needle and knit into this st (1 st inc'd)  
**M1:** Make 1—Pick up horizontal strand between stitch just worked and next stitch from front to back, place on left hand needle, knit this stitch through the back (1 stitch increased).  
**M1L:** Make 1 Left—Work as for M1.  
**M1p:** Make 1 purl—Pick up horizontal strand between stitch just worked and next stitch from front to back, place on left hand needle, purl this stitch through the back (1 stitch increased).  
**M1pL:** Make 1 purl Left—Work as for M1p.  
**M1pR:** Make 1 purl Right—Pick up horizontal strand between stitch just worked and next stitch from back to front, place on left hand needle, purl this stitch through the front (1 stitch increased).  
**M1R:** Make 1 Right—Pick up horizontal strand between stitch just worked and next stitch from back to front, place on left hand needle, knit this stitch through the front (1 stitch increased).  
**MC:** main color  
**p:** purl  
**p tbl:** purl through the back loop(s)  
**p2tog:** purl 2 stitches together  
**p3tog:** purl 3 stitches together  
**pat(s):** pattern(s)  
**pm:** place marker

**psso:** pass slipped stitch over knit stitch  
**rep:** repeat  
**Rev St st:** Reverse Stockinette Stitch—Purl 1 row, knit 1 row alternately when working back and forth in rows. The purl side is the right side of the work. Purl EVERY round when working in the round.  
**RH:** right hand  
**RLI:** Right Lifted Increase—Insert RH needle into the purl bump of the next st on the LH needle and knit into this st (1 st inc'd)  
**rnd(s):** round(s)  
**RS:** right side  
**sl:** slip  
**sm:** slip marker  
**SSK:** Slip 2 stitches knitwise, insert point of left hand needle through fronts of these 2 stitches and knit 2 together.  
**SSP:** Slip 2 stitches knitwise, transfer these 2 stitches back to left hand needle, purl 2 together through the back loops.  
**SSSK:** Slip 3 stitches knitwise, insert point of left hand needle through fronts of these 3 stitches and knit 3 together.  
**st(s):** stitch(es)  
**St st:** Stockinette Stitch—Knit 1 row, purl 1 row alternately when working back and forth in rows. The knit side is the right side of work. Knit EVERY round when working in the round.  
**tbl:** through back loop(s)  
**w&t:** wrap and turn, a method of concealing a hole created in short row shaping. On RS rows: With yarn held in front, slip next stitch purlwise, then bring yarn between needles to the back. Slip that same stitch back to the left needle. Turn your work. On WS Rows: With yarn held in back, slip next stitch purlwise, then bring yarn between needles to the front. Slip that same stitch back to the left needle. Turn your work. Unless otherwise indicated, each time you come to a wrapped stitch when working subsequent rows, slip the wrap back over stitch and onto needle, then work the wrap together with its accompanying stitch.  
**WS:** wrong side  
**wyib:** with yarn in back  
**wyif:** with yarn in front  
**yo:** yarn over

### QUESTIONS?

Scan the QR code for the Berroco Learning Center where you will find our fit guide, how-to videos, the complete glossary and more.

