

Lewiston

Designed by the Berroco Design Team / Skill level: Intermediate



FINISHED MEASUREMENTS
Approximately 13" wide x 70" long
(not including fringe)

YARN

BERROCO PIXEL (100 grs): 2 hanks
#2261 Pistachio (A); 1 ball each
#2262 (B) Raspberry Torte and
#2260 Blueberry Shortcake (C)
BERROCO AERIAL (25 grs): 3 balls
#3401 Ivory (D)

NEEDLES and NOTIONS
Knitting needles, size 7 / 4.5 mm
or size to obtain gauge
Crochet hook, size 7 / 4.5 mm
2 stitch markers

GAUGE
21 sts and 28 rows = 4" in St st
*To save time and ensure accurate
measurements, take time to check
gauge.*

Berroco Pixel®

Find this Yarn 

Berroco Aerial™

Find this Yarn 



BERROCO®
www.berroco.com

We recommend using yarns called for in our instructions. Every effort has been made to ensure that directions contained in this book are accurate and complete, however errors do occur. We cannot be responsible for variance of individual knitters, human or typographical errors.

All pattern PDFs are updated when corrections are made. In the event of finding an error, please make sure you've downloaded the most recent version.

NOTE

Always hold one strand of Aerial (D) with all Pixel colors shown.

When changing colors, hold yarn to the left and pick up new color from underneath. This twists yarn so there are no holes.

SCARF

Using 1 strand each of colors A and D, cast on 68 sts.
Knit 4 rows.

* Keeping 2 sts at each side in Garter St and remaining stitches in St st, follow Chart 1 until Row 70 of chart has been completed, end on WS.

Beginning with Row 71, follow Chart 2 until Row 136 has been completed, end on WS.

Beginning with Row 137, follow Chart 3 until Row 204 has been completed, end on WS.

Beginning with Row 205, follow Chart 4 until Row 272 has been completed, end on WS.

Repeat from * until Charts 1, 2, and 3 have been completed once more, end on WS with Row 204 of Chart 3. Fasten off colors B and C and knit 4 rows with A and D. Bind off.

FINISHING

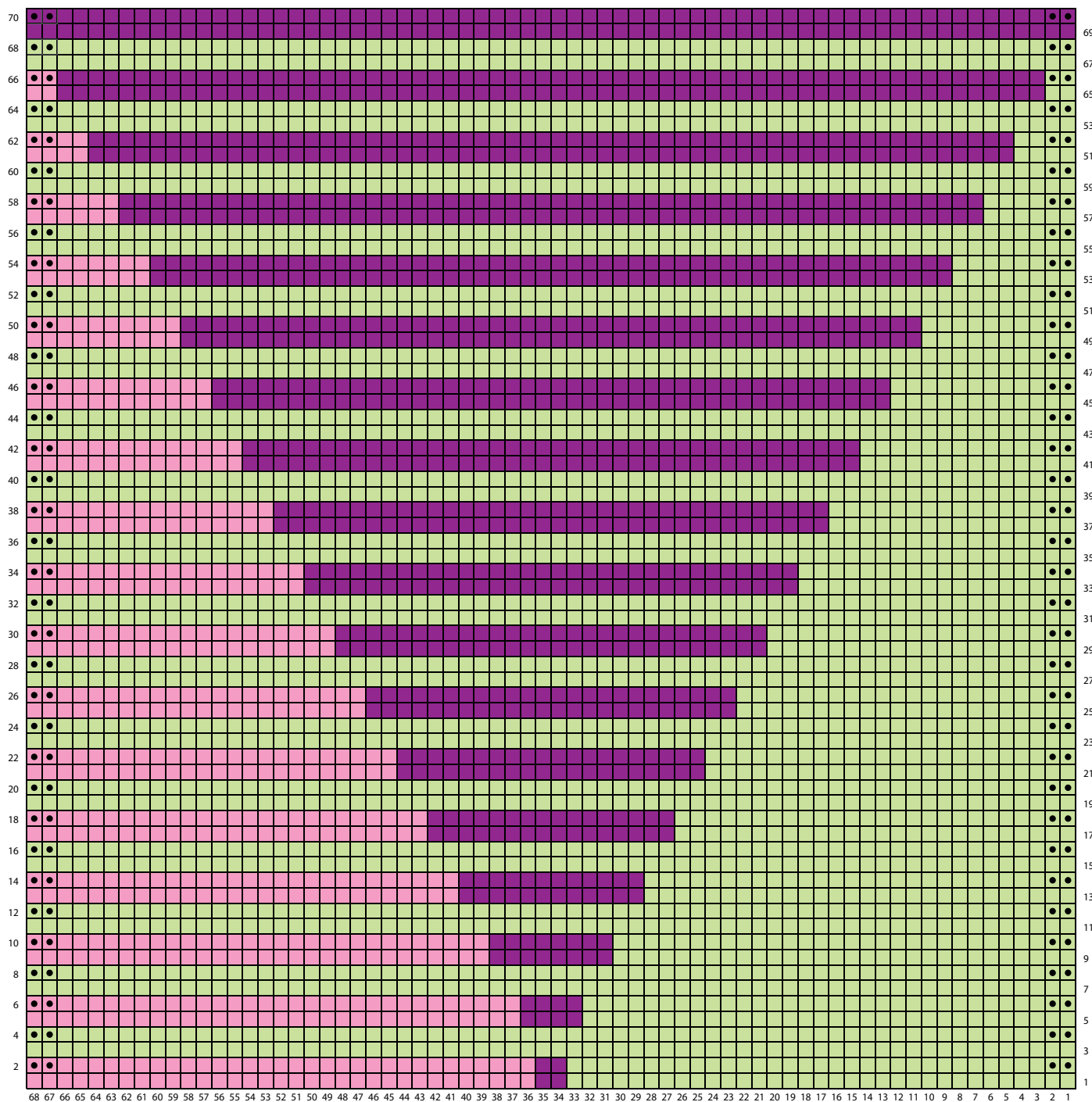
Fringe: Cut three 12" long strands of colors A and D. Put strands together and fold in half. Using crochet hook, draw center of strands through first st on cast-on edge of scarf forming a loop. Pull ends of strands through loop forming fringe.

In this manner, make fringe on every other stitch along entire cast-on and bound-off edges of scarf. Trim ends to even off if necessary.

Weave in all ends and block as desired.



LEWISTON CHART - 1



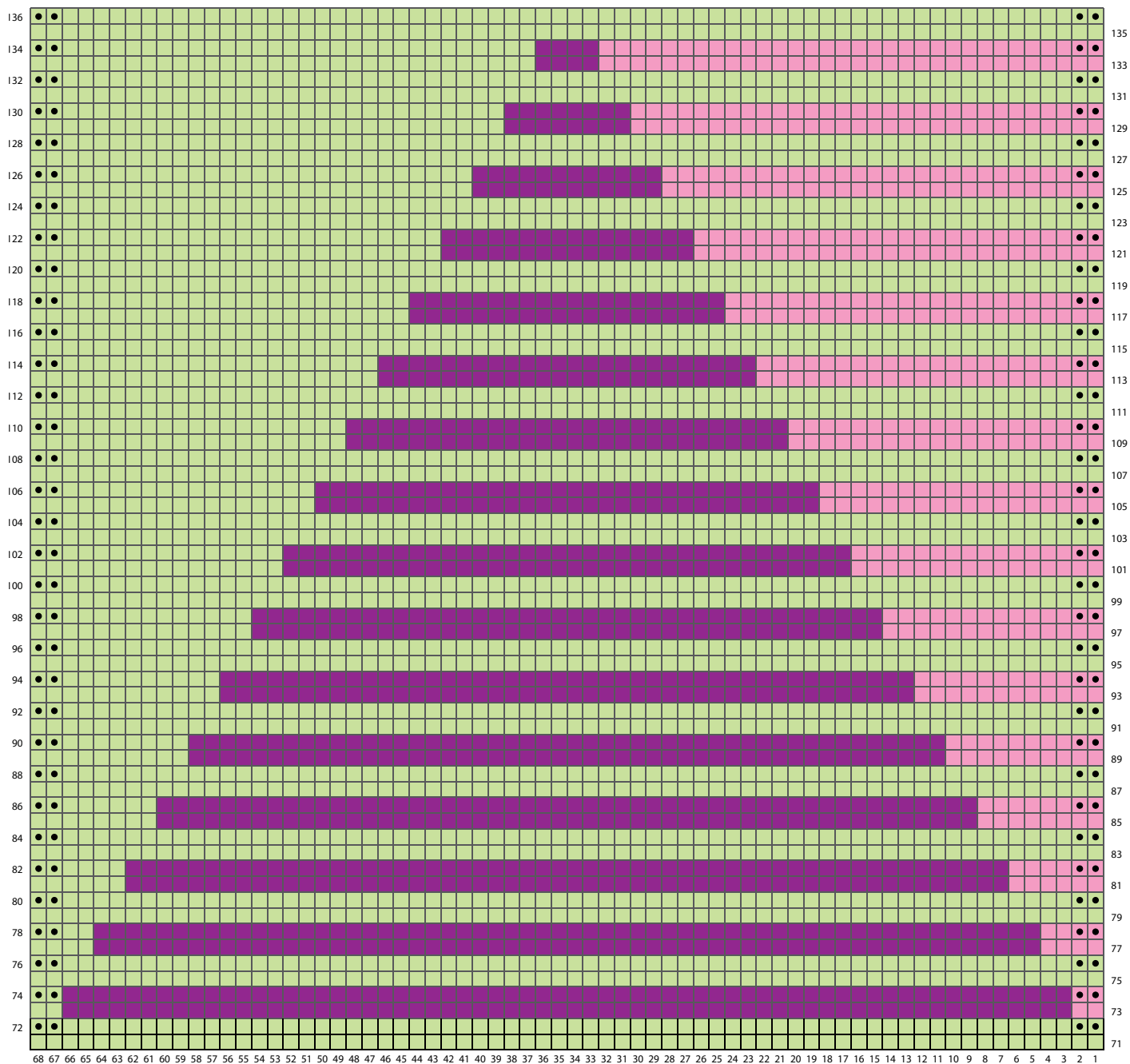
KEY TO CHARTS

- knit on RS; purl on WS
- Colors A and D
- knit on WS
- Colors B and D
- Colors C and D

CHART NOTES

Work from right to left on RS rows and from left to right on WS rows.

LEWISTON CHART - 2



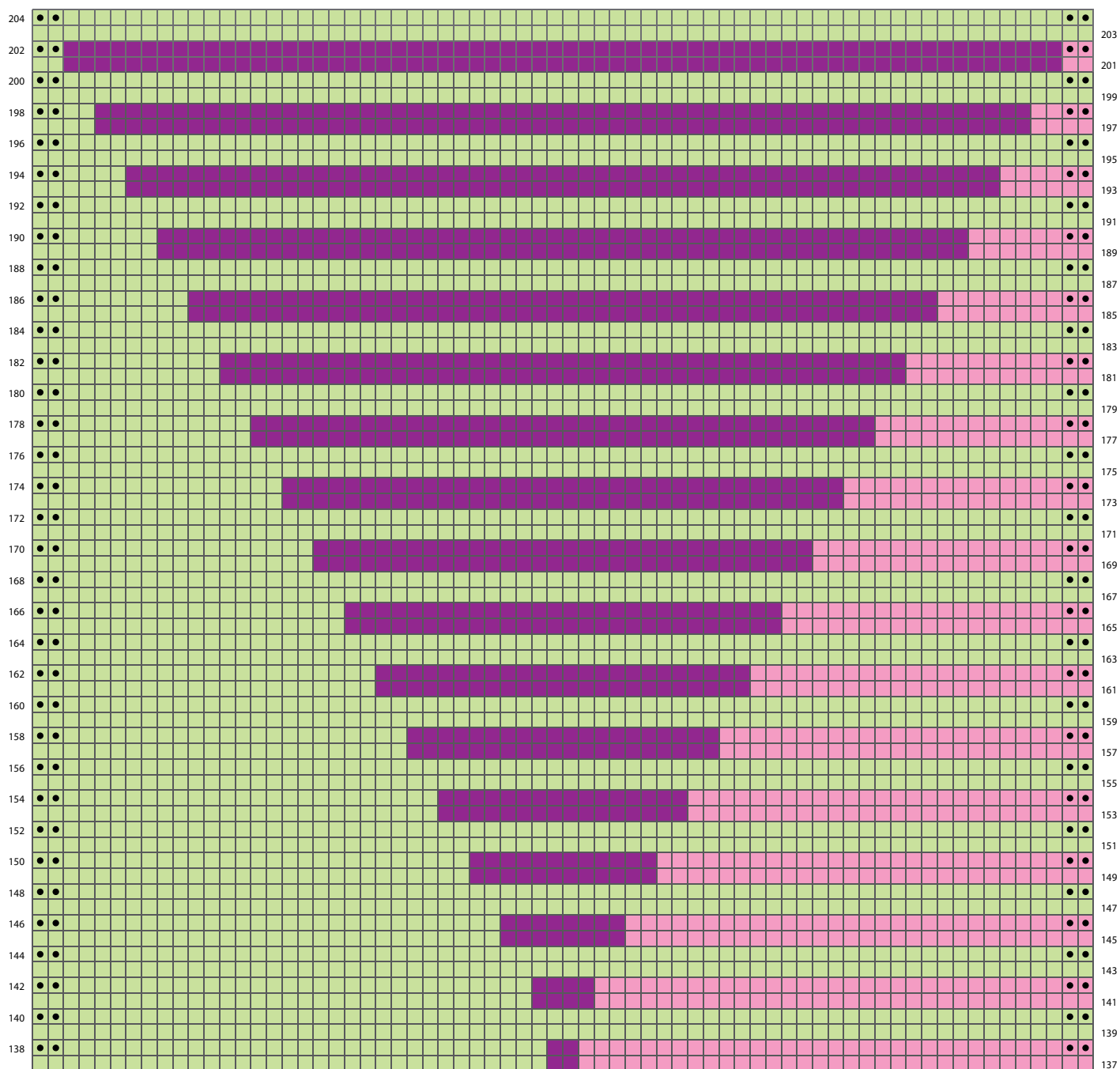
KEY TO CHARTS

- knit on RS; purl on WS
- Colors B and D
- knit on WS
- Colors C and D
- Colors A and D

CHART NOTES

Work from right to left on RS rows and from left to right on WS rows.

LEWISTON CHART - 3



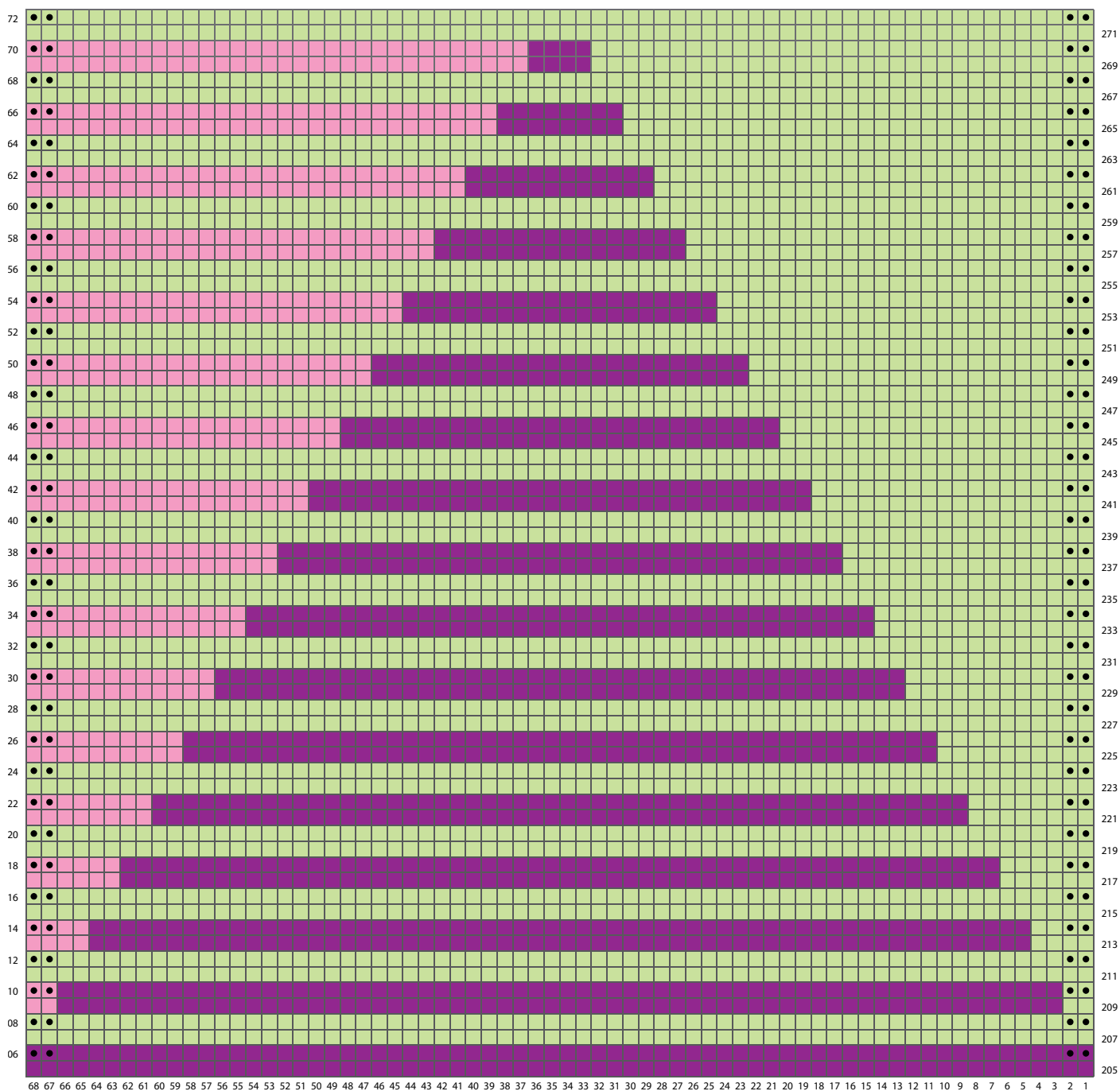
KEY TO CHARTS

- | | | | |
|-------------------------------------|------------------------|-------------------------------------|----------------|
| <input type="checkbox"/> | knit on RS; purl on WS | <input checked="" type="checkbox"/> | Colors B and D |
| <input checked="" type="checkbox"/> | knit on WS | <input type="checkbox"/> | Colors C and D |
| <input type="checkbox"/> | Colors A and D | | |

CHART NOTES

Work from right to left on RS rows and from left to right on WS rows.

LEWISTON CHART - 4



KEY TO CHARTS

- | | | | |
|-------------------------------------|------------------------|-------------------------------------|----------------|
| <input type="checkbox"/> | knit on RS; purl on WS | <input checked="" type="checkbox"/> | Colors B and D |
| <input checked="" type="checkbox"/> | knit on WS | <input type="checkbox"/> | Colors C and D |
| <input type="checkbox"/> | Colors A and D | | |

CHART NOTES

Work from right to left on RS rows and from left to right on WS rows.





STANDARD ABBREVIATIONS & TERMS

beg: beginning

CC: contrasting color

CDD: Centered Double Decrease—Slip 2 together (as if to k2tog), knit 1, pass the 2 slipped stitches over

cn: cable needle

dec: decrease

dpn(s): double pointed needle(s)

end on WS: end having just completed a Wrong Side row.

end on RS: end having just completed a Right Side row

Garner St: Knit EVERY row when working back and forth in rows. Knit 1 round, purl 1 round when working in the round.

inc: increase

k: knit

k tbl: knit through the back loop(s)

k2tog: knit 2 stitches together

k3tog: knit 3 stitches together

kfb: knit in the front and back of the next st

LH: left hand

LLI: Left Lifted Increase—Insert LH needle into the purl bump one row below the st just worked on the RH needle and knit into this st (1 st inc'd)

M1: Make 1—Pick up horizontal strand between stitch just worked and next stitch from front to back, place on left hand needle, knit this stitch through the back (1 stitch increased).

M1L: Make 1 Left—Work as for M1.

M1p: Make 1 purl—Pick up horizontal strand between stitch just worked and next stitch from front to back, place on left hand needle, purl this stitch through the back (1 stitch increased).

M1pL: Make 1 purl Left—Work as for M1p.

M1pR: Make 1 purl Right—Pick up horizontal strand between stitch just worked and next stitch from back to front, place on left hand needle, purl this stitch through the front (1 stitch increased).

M1R: Make 1 Right—Pick up horizontal strand between stitch just worked and next stitch from back to front, place on left hand needle, knit this stitch through the front (1 stitch increased).

MC: main color

p: purl

p tbl: purl through the back loop(s)

p2tog: purl 2 stitches together

p3tog: purl 3 stitches together

pat(s): pattern(s)

pm: place marker

pssso: pass slipped stitch over knit stitch

rep: repeat

Rev St st: Reverse Stockinette Stitch—Purl 1 row, knit 1 row alternately when working back and forth in rows. The purl side is the right side of the work. Purl EVERY round when working in the round.

RH: right hand

RLI: Right Lifted Increase—Insert RH needle into the purl bump of the next st on the LH needle and knit into this st (1 st inc'd)

rnd(s): round(s)

RS: right side

sl: slip

sm: slip marker

SSK: Slip 2 stitches knitwise, insert point of left hand needle through fronts of these 2 stitches and knit 2 together.

SSP: Slip 2 stitches knitwise, transfer these 2 stitches back to left hand needle, purl 2 together through the back loops.

SSSK: Slip 3 stitches knitwise, insert point of left hand needle through fronts of these 3 stitches and knit 3 together.

st(s): stitch(es)

St st: Stockinette Stitch—Knit 1 row, purl 1 row alternately when working back and forth in rows. The knit side is the right side of work. Knit EVERY round when working in the round.

tbl: through back loop(s)

w&t: wrap and turn, a method of concealing a hole created in short row shaping. On RS rows: With yarn held in front, slip next stitch purlwise, then bring yarn between needles to the back. Slip that same stitch back to the left needle. Turn your work. On WS Rows: With yarn held in back, slip next stitch purlwise, then bring yarn between needles to the front. Slip that same stitch back to the left needle. Turn your work. Unless otherwise indicated, each time you come to a wrapped stitch when working subsequent rows, slip the wrap back over stitch and onto needle, then work the wrap together with its accompanying stitch.

WS: wrong side

wyib: with yarn in back

wyif: with yarn in front

yo: yarn over

*Love Berroco patterns?
Sign up for our **KnitBits®** newsletter.*

