

# Kalta

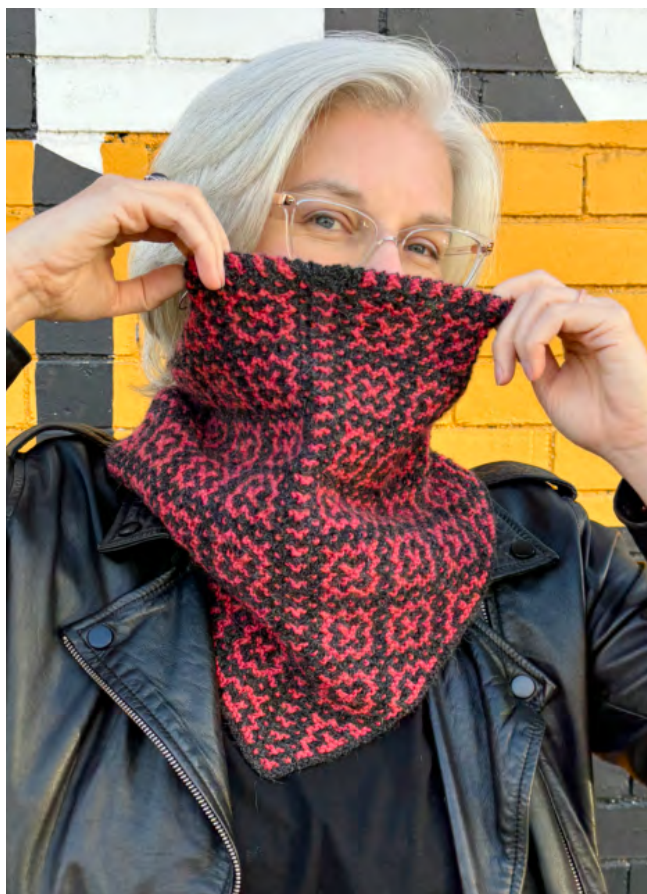
*Designed by Alison Green / Skill level: intermediate*



BERROCO®

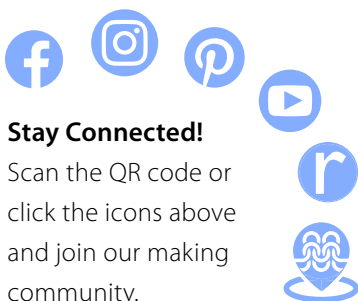
BERROCO.COM

Copyright 2024 in USA and Canada



*We recommend using yarns called for in our instructions. Every effort has been made to ensure that directions contained in this pattern are accurate and complete, however errors do occur. We cannot be responsible for variance of individual knitters, human or typographical errors.*

*All pattern PDFs are updated when corrections are made. In the event of finding an error, please make sure you've downloaded the most recent version.*



### Stay Connected!

Scan the QR code or click the icons above and join our making community.



**Share your project!**

#berrocoyarn

## FINISHED MEASUREMENTS

Neck edge circumference: Approximately 18" / 45.5 cm

Lower edge circumference: Approximately 33" / 84 cm

Length from center point to neck edge: Approximately 14" / 35.5 cm

Length at back neck: Approximately 4¼" / 11 cm

## YARN

**BERROCO ULTRA ALPACA LIGHT** (50 g): 1 hank each #4289 Charcoal Mix (C1) and #42178 Grapefruit Mix (C2)

## NEEDLES and NOTIONS

24" / 60 cm circular needle, size 5 / 3.75 mm or size to obtain gauge

Stitch markers (1 a different color for BOR)

## GAUGE

24 sts and 54 rounds = 4" / 10 cm in Pattern Stitch

*Gauge is measured after blocking. To save time and ensure accurate measurements, take time to check gauge.*

## Berroco Ultra Alpaca Light®

Find this Yarn



## CONSTRUCTION NOTES

Cowl is worked from the top down, beginning by working in rows and increasing at each edge and on either side of the center stitch. The sides of this beginning triangle form the top neck opening. Then the piece is joined and worked in the round to the bottom edge, continuing the increases only on either side of the center stitch.

Work from written instructions and charts for each section.

## SPECIAL ABBREVIATIONS

**M1BL-L (left backward loop increase):** Take the working yarn and wrap it around your left thumb from front to back, with the yarn tail at the back of your thumb. Insert the tip of the right needle upward from below the yarn tail, and through the loop wrapped around your thumb from back to front. Tighten the loop around the needle. After working the increase, the yarn will be coming from the back of your work.

**M1BL-R (right backward loop increase):** Take the working yarn and wrap it around your left thumb from back to front, with the yarn tail at the front of your thumb, closest to you, holding the tail with your other fingers against your palm. Insert the tip of the right needle upward from below



the yarn tail, and through the loop wrapped around your thumb from front to back. Tighten the loop around the needle. After working the increase, the yarn will be coming from the front of your work. On the next row, you will knit or purl into the back loop of this stitch to prevent an extra twist on this stitch. **Note:** M1BL-R is worked exactly the same as the standard Backward Loop cast-on method, except that you are working in between stitches.

**Note:** M1BL-L and M1BL-R are essentially the same increases as M1L and M1R, respectively. The difference is that by using the working yarn instead of the strand in between stitches from the previous row, the resulting stitch (and the stitches around it) will not be as tight as with M1 increases. However, it is important to not work these increases too loosely, otherwise it may result in a gap.

*For a complete set of abbreviations used in this pattern, see last page.*

## SECTION 1 (Worked Flat)

With C1, cast on 3 sts.

**Row 1 (WS):** [Kfb] twice, k1. 5 sts

**Row 2 (RS):** K2, pm, M1BL-L, pm, k1, pm, M1BL-R, pm, k2. 7 sts.

**Row 3:** K2, sm, k1tbl, sm, k1, sm, k1, sm, k2.

Begin working from Chart 1. Work Rows Rows 4–37. 75 sts.

Work Chart 2, Rows 38–53. 107 sts.

Repeat Rows 38–53, then work Rows 38–50 once more. 167 sts.

**Next Row (WS):** Work Row 51, and at the end of this row, k2tog the last st of the row with the first st to join for working in the round. Turn to RS. 166 sts.

## SECTION 2 (Worked in the round)

**Rnd 1:** With C1, sl 1 st from RH needle to LH needle, pm for BOR, CDD (this is first st of Rnd 1 on Chart 3), remove marker, work remainder of Rnd 1 of Chart 3 to end. 166 sts.

**Rnd 2:** With C1, work Rnd 2 of Chart 3 to end.

**Rnd 3:** Remove BOR marker, sl 1 st from RH needle to LH needle, replace BOR marker, with C2, CDD (this is first st on chart); work remainder of Rnd 3 from chart to end. 166 sts.



Work Rnds 4–36 of Chart 3. 198 sts.

Work Rnds 5–20 once more. 214 sts.

Break off C2.

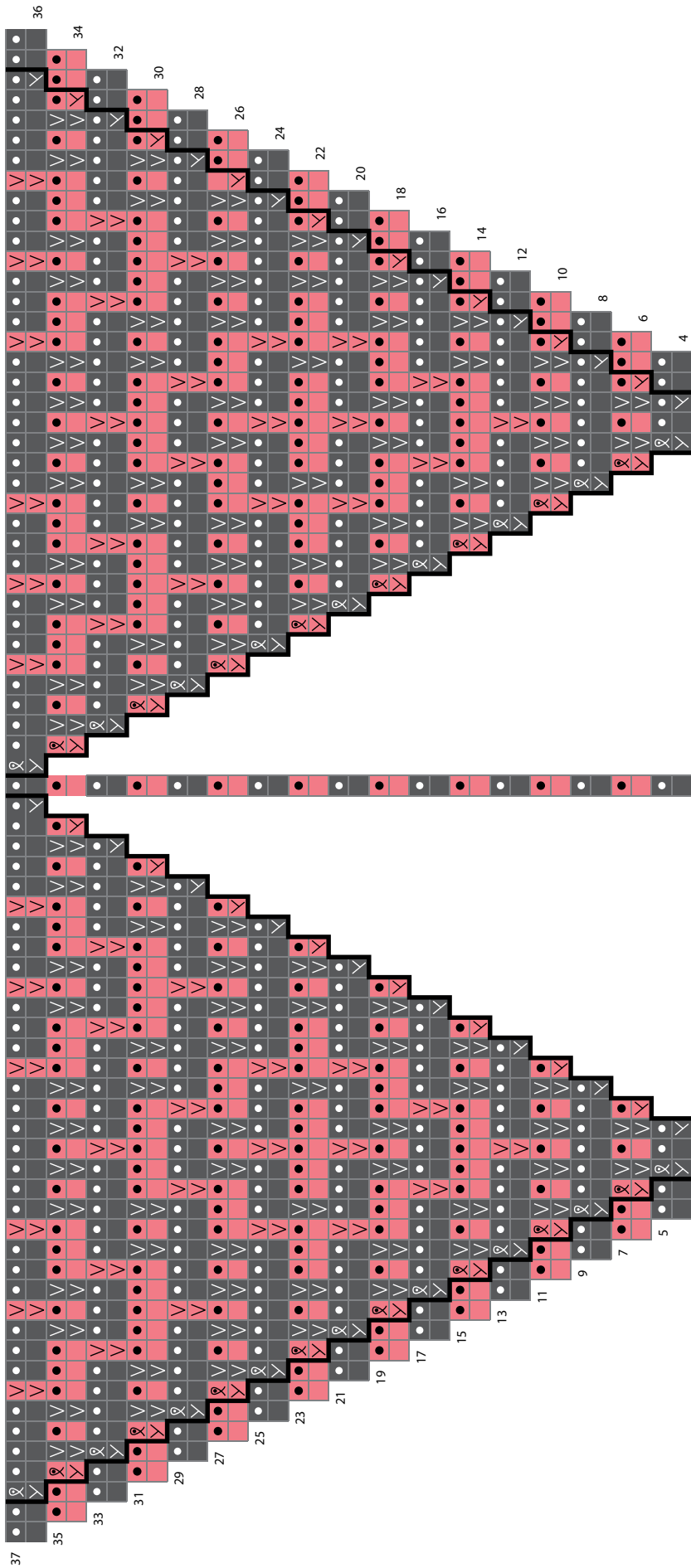
**Next Rnd:** With C1, knit to marker, M1BL-L, remove marker, k1, remove marker, M1BL-R, knit to end. 216 sts.

Bind off purlwise.

## FINISHING

Weave in all ends and block as desired.

KALTA CHART 1



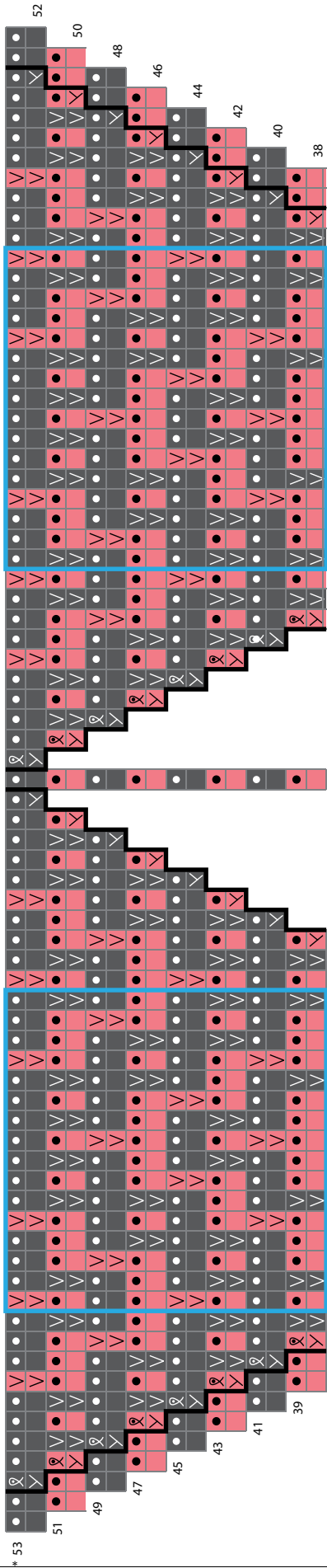
KEY TO CHARTS

- C1
- C2
- knit on RS; purl on WS
- purl on RS; knit on WS
- sl 1 wyib on RS; sl 1 wyif on WS
- M1BL-R
- M1BL-L
- k1tbl on WS; p1tbl on RS
- marker placement
- pattern repeat

CHART NOTES

- When working in rows, work from right to left on RS rows and from left to right on WS rows.
- When working in the round, work from right to left on every round.
- \* See written instructions for transition between Chart 2 and Chart 3.

KALTA CHART 2



KEY TO CHARTS

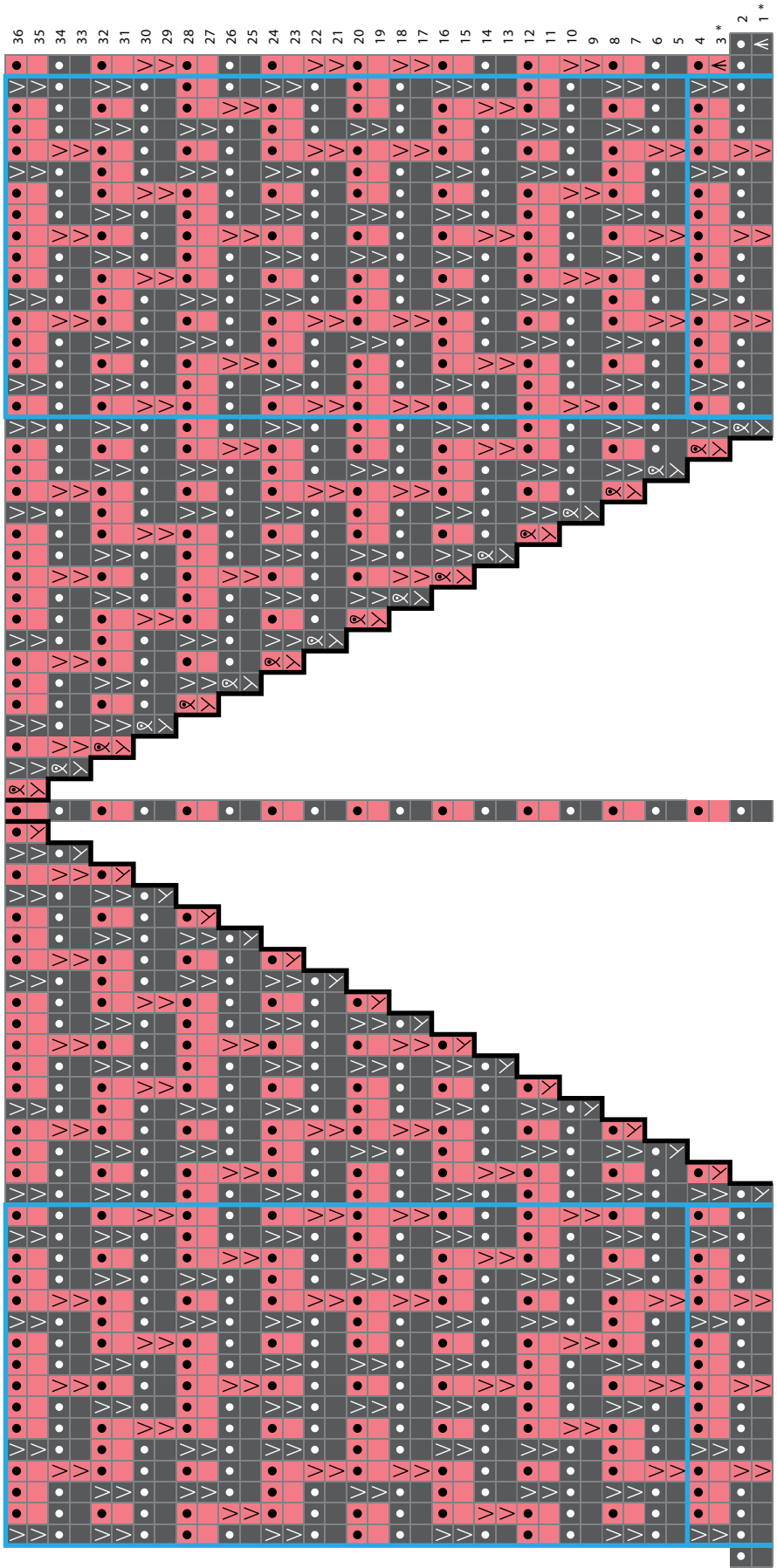
- C1
- C2
- knit on RS; purl on WS
- purl on RS; knit on WS
- sl 1 wyib on RS; sl 1 wyif on WS

CHART NOTES

- When working in rows, work from right to left on RS rows and from left to right on WS rows.
- When working in the round, work from right to left on every round.
- \* See written instructions for transition between Chart 2 and Chart 3.

- M1BL-R
- M1BL-L
- k1tbl on WS; p1tbl on RS
- marker placement
- pattern repeat

# KALTA CHART 3



## KEY TO CHARTS

- C1
- C2
- knit on RS; purl on WS
- purl on RS; knit on WS
- V

 sl 1 wyib on RS; sl 1 wyif on WS
- X

 M1BL-R
- X

 M1BL-L
- P

 k1tbl on WS; p1tbl on RS
- marker placement
- pattern repeat

## CHART NOTES

- When working in rows, work from right to left on RS rows and from left to right on WS rows.
- When working in the round, work from right to left on every round.
- \* See written instructions for transition between Chart 2 and Chart 3.

## STANDARD ABBREVIATIONS & TERMS

**BOR:** beginning of round

**C1:** color 1

**C2:** color 2

**CDD:** Centered Double Decrease—Slip 2 together (as if to k2tog), knit 1, pass the 2 slipped stitches over

**k:** knit

**k tbl:** knit through the back loop(s)

**k2tog:** knit 2 stitches together

**kfb:** knit in the front and back of the next st

**LH:** left hand

**p tbl:** purl through the back loop(s)

**pm:** place marker

**RH:** right hand

**rnd(s):** round(s)

**RS:** right side

**sl:** slip

**sm:** slip marker

**st(s):** stitch(es)

**WS:** wrong side

**wyib:** with yarn in back

**wyif:** with yarn in front

**yo:** yarn over

### QUESTIONS?

Scan the QR code for the Berroco Learning Center where you will find our fit guide, how-to videos, the complete glossary and more.

