

Carnation

version 2

Designed by Alison Green / Skill level: Intermediate



FINISHED MEASUREMENTS
Approximately 76" wide x 38" long
(after blocking)

YARN
BERROCO AERIAL (25 grs): 2 balls
#3411 Tea Rose

NEEDLES and NOTIONS
29" circular needle, size 6 (4.00 mm)
or size to obtain gauge
Crochet hook, size 4.00 mm (G)

GAUGE
12 sts and 24 rows = 4" in Lace
Pattern, after blocking
18 sts and 27 rows = 4" in St st,
before blocking
*To save time and ensure accurate
measurements, take time to check
gauge.*

Berroco Aerial™

Find this Yarn 

BERROCO®



www.berroco.com

We recommend using yarns called for in our instructions. Every effort has been made to ensure that directions contained in this book are accurate and complete, however errors do occur. We cannot be responsible for variance of individual knitters, human or typographical errors.

All pattern PDFs are updated when corrections are made. In the event of finding an error, please make sure you've downloaded the most recent version.

SHAWL

Cast on 5 sts.

Row 1 (WS): Knit.

Row 2 (RS): K2, yo, k1, yo, k2—7 sts.

Row 3: K2, pm, p1, pm, k1, pm, p1, pm, k2.

Row 4: K2, sm, work Row 1 of Chart 1, sm, k1, work Row 1 of Chart 1, sm, k2—11 sts.

Row 5 and all WS rows: K2, purl to last 2 sts (slipping markers as you come to them), k2.

Row 6: K2, sm, work next row of Chart 1, sm, k1, sm, work next row of Chart 1, sm, k2—4 sts increased.

Continue working as established, with 2 sts on each end and the center st in Garter st, until Chart 1 is complete, then work Rows 21–44 of Chart 1 once more—143 sts.

Change to Chart 2, continuing to work 2 sts on each end and the center st in Garter st, and work Rows 1–24 of Chart 2 three times total—287 sts.

Next Row (RS): K2, sm, yo, * k9, yo, sl 1, k2tog, pssso, yo; rep from * to 9 sts before marker, k9, yo, sm, k1, sm, ** k9, yo, sl 1, k2tog, pssso, yo; rep from * to 9 sts before marker, k9, yo, sm, k2—291 sts.

Work WS row even.

Crochet Bind Off: * Insert crochet hook into 3 sts, yarn over and pull through all 3 sts, chain 5; rep from * to last 3 sts, insert hook into last 3 sts, yarn over and pull through all 3 sts. Fasten off.

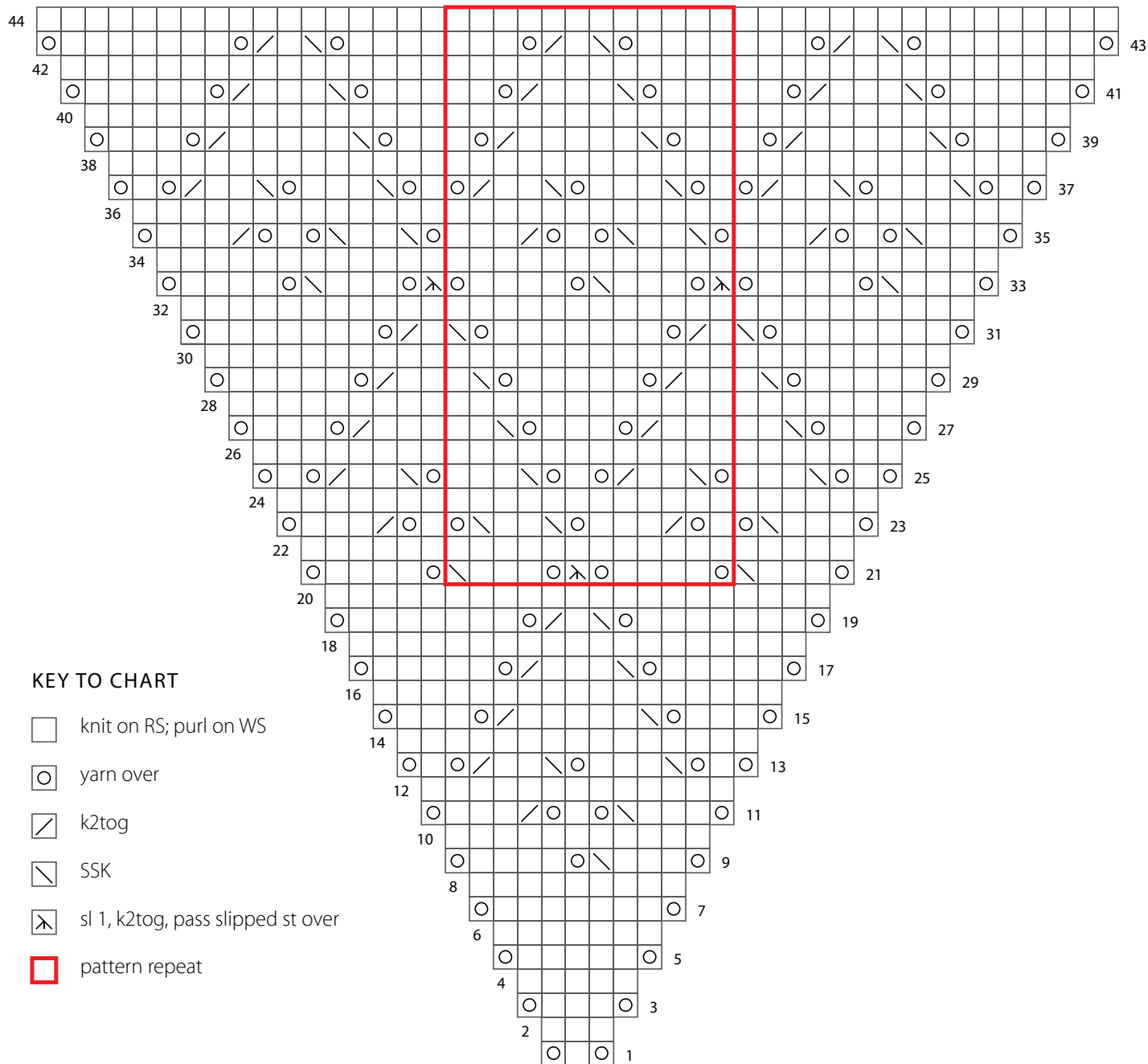
FINISHING

Weave in all ends and block as desired.





CARNATION CHART 1



KEY TO CHART





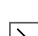

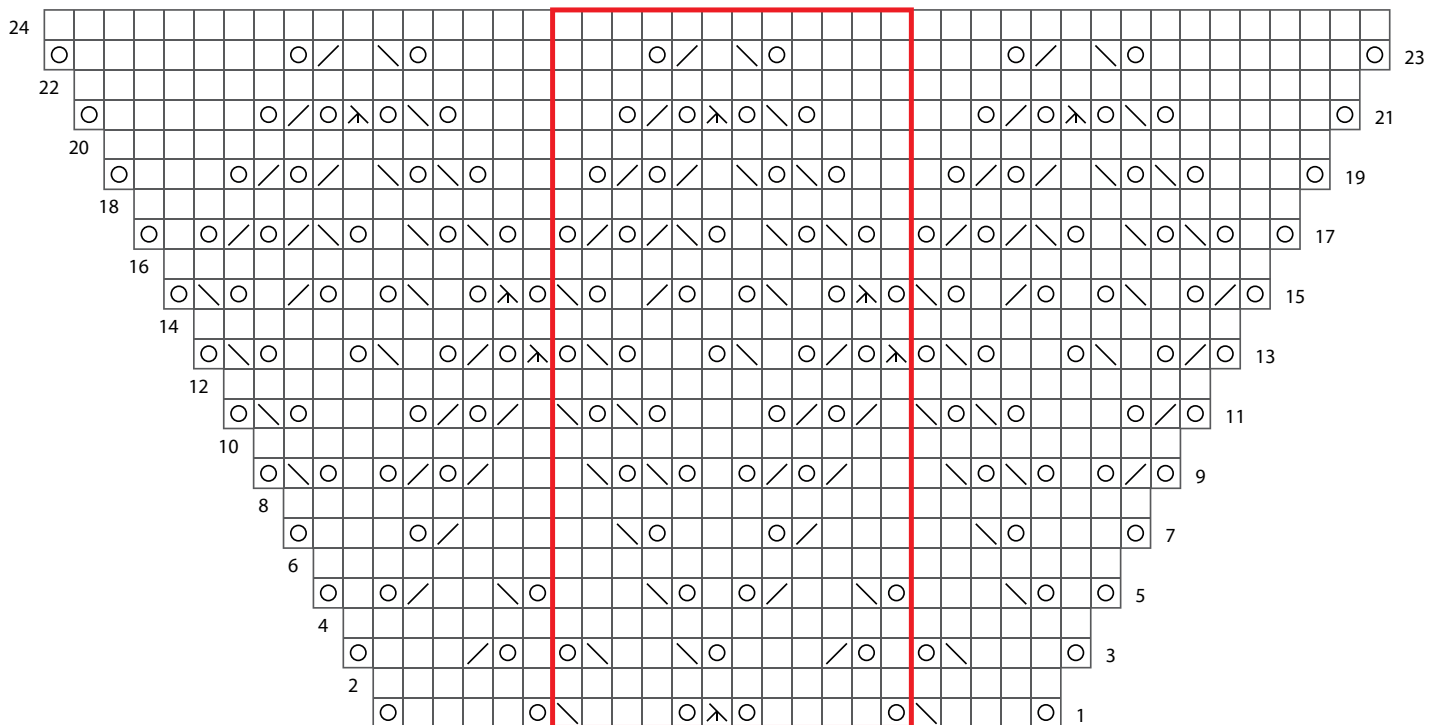
-  knit on RS; purl on WS
-  yarn over
-  k2tog
-  SSK
-  sl 1, k2tog, pass slipped st over
-  pattern repeat

CHART NOTES

Work from right to left on RS rows
and from left to right on WS rows.

CARNATION CHART 2



KEY TO CHART

- knit on RS; purl on WS
- yarn over
- k2tog
- SSK
- sl 1, k2tog, pass slipped st over
- pattern repeat

CHART NOTES

Work from right to left on RS rows
and from left to right on WS rows.

STANDARD ABBREVIATIONS & TERMS

beg: beginning
CC: contrasting color
CDD: Centered Double Decrease—Slip 2 together (as if to k2tog), knit 1, pass the 2 slipped stitches over
cn: cable needle
dec: decrease
dpn(s): double pointed needle(s)
end on WS: end having just completed a Wrong Side row.
end on RS: end having just completed a Right Side row
Garter St: Knit EVERY row when working back and forth in rows. Knit 1 round, purl 1 round when working in the round.
inc: increase
k: knit
k tbl: knit through the back loop(s)
k2tog: knit 2 stitches together
k3tog: knit 3 stitches together
kfb: knit in the front and back of the next st
LH: left hand
LLI: Left Lifted Increase—Insert LH needle into the purl bump one row below the st just worked on the RH needle and knit into this st (1 st inc'd)
M1: Make 1—Pick up horizontal strand between stitch just worked and next stitch from front to back, place on left hand needle, knit this stitch through the back (1 stitch increased).
M1L: Make 1 Left—Work as for M1.
M1p: Make 1 purl—Pick up horizontal strand between stitch just worked and next stitch from front to back, place on left hand needle, purl this stitch through the back (1 stitch increased).
M1pL: Make 1 purl Left—Work as for M1p.
M1pR: Make 1 purl Right—Pick up horizontal strand between stitch just worked and next stitch from back to front, place on left hand needle, purl this stitch through the front (1 stitch increased).
M1R: Make 1 Right—Pick up horizontal strand between stitch just worked and next stitch from back to front, place on left hand needle, knit this stitch through the front (1 stitch increased).
MC: main color
p: purl
p tbl: purl through the back loop(s)
p2tog: purl 2 stitches together
p3tog: purl 3 stitches together
pat(s): pattern(s)

pm: place marker
pssso: pass slipped stitch over knit stitch
rep: repeat
Rev St st: Reverse Stockinette Stitch—Purl 1 row, knit 1 row alternately when working back and forth in rows. The purl side is the right side of the work. Purl EVERY round when working in the round.
RH: right hand
RLI: Right Lifted Increase—Insert RH needle into the purl bump of the next st on the LH needle and knit into this st (1 st inc'd)
rnd(s): round(s)
RS: right side
sl: slip
sm: slip marker
SSK: Slip 2 stitches knitwise, insert point of left hand needle through fronts of these 2 stitches and knit 2 together.
SSP: Slip 2 stitches knitwise, transfer these 2 stitches back to left hand needle, purl 2 together through the back loops.
SSSK: Slip 3 stitches knitwise, insert point of left hand needle through fronts of these 3 stitches and knit 3 together.
st(s): stitch(es)
St st: Stockinette Stitch—Knit 1 row, purl 1 row alternately when working back and forth in rows. The knit side is the right side of work. Knit EVERY round when working in the round.
tbl: through back loop(s)
w&t: wrap and turn, a method of concealing a hole created in short row shaping. On RS rows: With yarn held in front, slip next stitch purlwise, then bring yarn between needles to the back. Slip that same stitch back to the left needle. Turn your work. On WS Rows: With yarn held in back, slip next stitch purlwise, then bring yarn between needles to the front. Slip that same stitch back to the left needle. Turn your work. Unless otherwise indicated, each time you come to a wrapped stitch when working subsequent rows, slip the wrap back over stitch and onto needle, then work the wrap together with its accompanying stitch.
WS: wrong side
wyib: with yarn in back
wyif: with yarn in front
yo: yarn over

Love Berroco patterns?
 Sign up for our **KnitBits®** newsletter.

