

Briar

Designed by the Berroco Design Team / Skill level: Intermediate



FINISHED MEASUREMENTS

Bust (with buttonbands overlapped): (35½, 38¾, 43) [46¾, 50¾, 54¾, 58¾] {62½, 66½, 70½}" / (90, 98.5, 109) [118.5, 129, 139, 149] {159, 169, 179} cm
Length: (16¾, 16¾, 17) [17½, 18, 18½, 19] {19½, 20¼, 21}" / (42.5, 42.5, 43) [44.5, 45.5, 47, 48.5] {49.5, 51.5, 53.5} cm
Shown in size 38¾" / 98.5 cm.
Recommended ease:
Approximately 2–4" / 5–10 cm positive ease.

YARN

BERROCO ULTRA WOOL FINE

(100 grs): (3, 3, 3) [3, 4, 4, 4] {5, 5, 6} balls #53153 Heather

NEEDLES and NOTIONS

32" / 80 cm circular needles, sizes 3 / 3.25 mm and 4 / 3.5 mm *or size to obtain gauge*
Stitch markers
Waste yarn to hold stitches
Six ½" buttons

GAUGE

24 sts and 30 rows = 4" / 10 cm in St st
26 sts and 30 rows = 4" / 10 cm worked over charts
Gauge is measured after blocking. To save time and ensure accurate measurements, take time to check gauge.

Berroco Ultra® Wool Fine

Find this Yarn 



BERROCO®



www.berroco.com



We recommend using yarns called for in our instructions. Every effort has been made to ensure that directions contained in this book are accurate and complete, however errors do occur. We cannot be responsible for variance of individual knitters, human or typographical errors.

All pattern PDFs are updated when corrections are made. In the event of finding an error, please make sure you've downloaded the most recent version.

CONSTRUCTION NOTES

Body of garment is worked flat in one piece to the underarms, then divided for back and fronts. Back and fronts are worked separately with raglan armholes. Sleeves are worked flat. Raglan seams are sewn, then neckband and frontbands are picked up and worked in ribbing.

BODY

With smaller needle, cast on (213, 233, 259) [283, 307, 331, 355] {379, 403, 427} sts. Do not join.

Set Up Rib: Row 1 (WS): P1, * k1, p1; rep from * across.

Row 2 (RS): K1, * p1, k1; rep from * across.

Rep these 2 rows until piece measures 2" / 5 cm from cast-on, end on WS, inc 1 st in center of last row—(214, 234, 260) [284, 308, 332, 356] {380, 404, 428} sts.

Change to larger needle.

Establish Charts: Row 1 (RS): Work Row 1 of Chart 1 over (49, 49, 49) [61, 61, 61, 61] {73, 73, 73} sts, pm, knit (116, 136, 162) [162, 186, 210, 234] {234, 258, 282} sts, pm, work Row 1 of Chart 2 to end.

Row 2: Work Row 2 of Chart 2 to first marker, sm, purl to next marker, sm, work row 2 of Chart 1 to end.

Work even in pattern as established until piece measures 10" / 25.5 cm from cast-on, end on WS.

Note: As you decrease for armholes, if there are not enough stitches to work a yo with its dec (SSK or k2tog), work these stitches in St st.



Divide for Fronts and Back: Next Row (RS): Work (49, 52, 59) [64, 70, 75, 81] {86, 92, 97} sts, slip these stitches to waste yarn for Right Front, bind off (10, 12, 12) [14, 14, 16, 16] {18, 18, 20} sts, work until there are (96, 106, 118) [128, 140, 150, 162] {172, 184, 194} sts on RH needle, slip these stitches to waste yarn for Back, bind off (10, 12, 12) [14, 14, 16, 16] {18, 18, 20} sts, work to end—(49, 52, 59) [64, 70, 75, 81] {86, 92, 97} sts.

Make a note of the last chart row worked.

Note: Please read this entire section before starting to knit. Decs at armhole and neck happen at the same time, but at different intervals.

Left Front: Work 1 WS row.

Shape Raglan Armhole: Dec Row 1 (RS): K1, k3tog, work to end—2 sts dec'd.

Rep Dec Row 1 every RS row (5, 10, 15) [17, 21, 24, 28] {31, 34, 37} times more, end on WS.

Dec Row 2 (RS): K1, k2tog, work to end—2 sts dec'd.

Rep Dec Row 2 every RS row (16, 11, 7) [7, 5, 4, 2] {1, 1, 0} times more, AT THE SAME TIME, when armhole measures (4½, 4½, 5) [5½, 6, 6½, 7] {7½, 8, 8½}" / (11.5, 11.5, 12.5) [14, 15, 16.5, 18] {19, 20.5, 21.5} cm, end on RS.

Shape Neck: Continuing to dec at armhole as before, bind off (13, 11, 12) [13, 13, 13, 13] {13, 13, 13} sts at beg of the



next WS row, 3 sts at beg of the next WS row, 2 sts at beg of the next WS row, then 1 st at beg of the next WS row.

When all armhole and neck decs have been completed, fasten off last stitch.

Back: With WS facing, slip (96, 106, 118) [128, 140, 150, 162] {172, 184, 194} sts from waste yarn to larger needle. Join yarn and work 1 WS row.

Shape Raglan Armholes: Dec Row 1 (RS): K1, k3tog, work to the last 4 sts, SSSK, k1—4 sts dec'd.

Rep Dec Row 1 every RS row (5, 10, 15) [17, 21, 24, 28] {31, 34, 37} times more, end on WS—(72, 62, 54) [56, 52, 50, 46] {48, 48, 46} sts.

Dec Row 2 (RS): K1, k2tog, knit to the last 3 sts, SSK, k1—2 sts dec'd.

Rep Dec Row 2 every RS row (16, 11, 7) [7, 5, 4, 2] {1, 1, 0} times more, end on WS—(38, 38, 38) [40, 40, 40, 40] {40, 40, 40} sts. Bind off.

Right Front: With WS facing, slip (49, 52, 59) [64, 70, 75, 81] {86, 92, 97} sts from waste yarn to larger needle. Join yarn and work 1 WS row.

Shape Raglan Armhole: Dec Row 1 (RS): Work to the last 4 sts, SSSK, k1—2 sts dec'd.

Rep Dec Row 1 every RS row (5, 10, 15) [17, 21, 24, 28] {31, 34, 37} times more, end on WS.

Dec Row 2 (RS): Work to the last 3 sts, SSK, k1—2 sts dec'd. Rep Dec Row 2 every RS row (16, 11, 7) [7, 5, 4, 2] {1, 1, 0} times more, AT THE SAME TIME, when armhole measures (4½, 4½, 5) [5½, 6, 6½, 7] {7½, 8, 8½}" / (11.5, 11.5, 12.5) [14, 15, 16.5, 18] {19, 20.5, 21.5} cm, end on WS.

Shape Neck: Continuing to dec at armhole as before, bind off (13, 11, 12) [13, 13, 13, 13] {13, 13, 13} sts at beg of the next RS row, 3 sts at beg of the next RS row, 2 sts at beg of the next RS row, then 1 st at beg of the next RS row. When all armhole and neck decs have been completed, fasten off last stitch.

SLEEVES

With smaller needle, cast on 61 sts. Do not join. Work in ribbing as for body for 2" / 5 cm, end on WS. Change to larger needle.

Establish Chart: Row 1 (RS): K19, pm, work Row 1 of Chart 3 over 23 sts, pm, knit to end.

Row 2: Purl to first marker, sm, work Row 2 of Chart 3 to last marker, sm, purl to end. Work even in pat as established until sleeve measures 2" / 5 cm from cast-on, end on WS.

Inc Row (RS): K1, M1L, knit to last stitch, M1R, k1—2 sts inc'd. Rep Inc Row every (14th, 10th, 8th) [6th, 4th, 4th, 4th] {2nd, 2nd, 2nd} row (7, 10, 13) [16, 19, 22, 25] {28, 31, 34} times more—(77, 83, 89) [95, 101, 107, 113] {119, 125, 131} sts. Work even until sleeve measures 18" / 45.5 cm from cast-on, end on WS.

Shape Raglan Cap: Bind off (5, 6, 6) [7, 7, 8, 8] {9, 9, 10} sts at beginning of the next 2 rows—(67, 71, 77) [81, 87, 91, 97] {101, 107, 111} sts.

Dec Row 1 (RS): K1, k3tog, knit to last 4 sts, SSSK, k1—4 sts dec'd.

Rep Dec Row 1 every RS row (2, 4, 6) [6, 7, 7, 8] {8, 8, 8} times more, end on WS.

Dec Row 2 (RS): K1, k2tog, knit to last 3 sts, SSK, k1—2 sts dec'd. Rep Dec Row 2 every RS row (19, 17, 16) [18, 19, 21, 22] {24, 27, 29} times more, end on WS.

Bind off remaining 15 sts.

FINISHING

Sew sleeve seams. Sew raglan caps to raglan armholes. Sew underarm stitches together.

Button Band: With RS facing, using smaller needle, begin at neck edge, pick up and knit (87, 87, 91) [93, 97, 99, 103] {105, 109, 111} sts along left front edge. Beginning with Row 2, work even in ribbing as for body for 1" / 2.5 cm, end on WS. Bind off in ribbing.

Mark placement of 5 buttons along button band, the first at the top of the ribbing and the last 2" below the start of the neck shaping (the 6th button will be on neckband).



Buttonhole Band: With RS facing, using smaller needle, begin at lower edge, pick up and knit (87, 87, 91) [93, 97, 99, 103] {105, 109, 111} sts along right front edge to beginning of neck shaping. Work as for left frontband for 3 rows, end on WS.

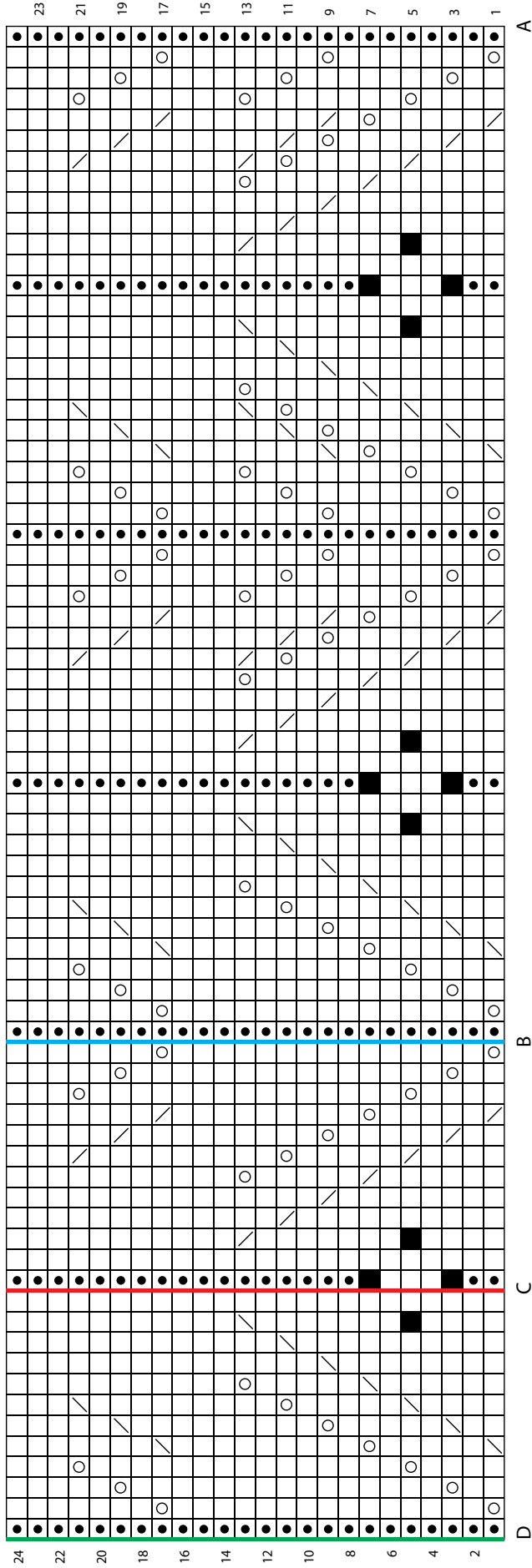
Buttonhole Row (RS): * Work to first marker, k2tog, yo, rep from * 4 times more, work to end. Complete as for left frontband.

Neckband: With RS facing, using smaller needle, begin at right front edge, pick up and knit 7 sts over top of button band, 20 sts along right front neck edge, 14 sts across top of right sleeve, (37, 37, 37) [41, 41, 41, 41] {41, 41, 41} sts across back neck edge, 14 sts across top of left sleeve, 20 sts along left front neck edge, then 7 sts across top of buttonhole band—(119, 119, 119) [123, 123, 123, 123] {123, 123, 123} sts. Beginning with Row 2, work in ribbing as for body for 3 rows, end on WS.

Buttonhole Row (RS): Work 3 sts, k2tog, yo, work to end. Work even until band measures 1" / 2.5 cm, end on WS. Bind off.

Weave in all ends and block as desired. Sew on buttons.

CHART 1



KEY TO CHARTS

- ☐ knit on RS; purl on WS
- ☒ purl on RS; knit on WS
- ☐ yarn over
- ☐ k2tog
- ☐ SSK
- ☒ Bobble: knit in front, back then front of st, turn, p3, turn, sl 1, k2tog, pssso—1 st remains.

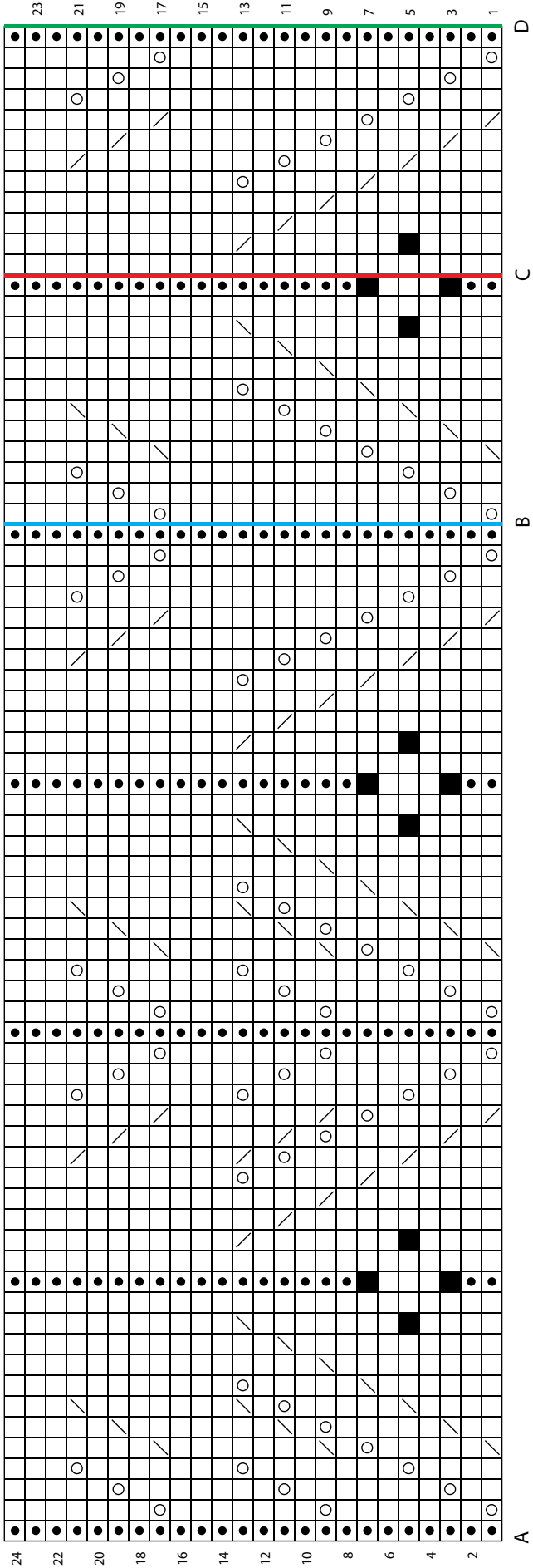
INSTRUCTIONS FOR CHART 1

Sizes 35½" / 90 cm, 38¾" / 98.5 cm, and 43" / 109 cm: On RS, work from A to B. On WS, work from B to A.

Sizes 46¾" / 118.5 cm, 50¾" / 129 cm, 54¾" / 139 cm, and 58¾" / 149 cm: On RS, work from A to C. On WS, work from C to A.

Sizes 62½" / 159 cm, 66½" / 169 cm, and 70½" / 179 cm: On RS, work from A to D. On WS, work from D to A.

CHART 2



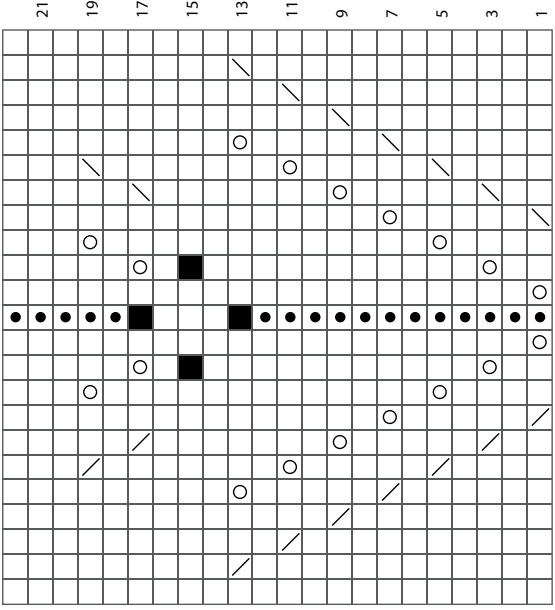
KEY TO CHARTS

- knit on RS; purl on WS
- purl on RS; knit on WS
- yarn over
- k2tog
- SSK
- Bobble: knit in front, back then front of st, turn, p3, turn, sl 1, k2tog, psso—1 st remains.

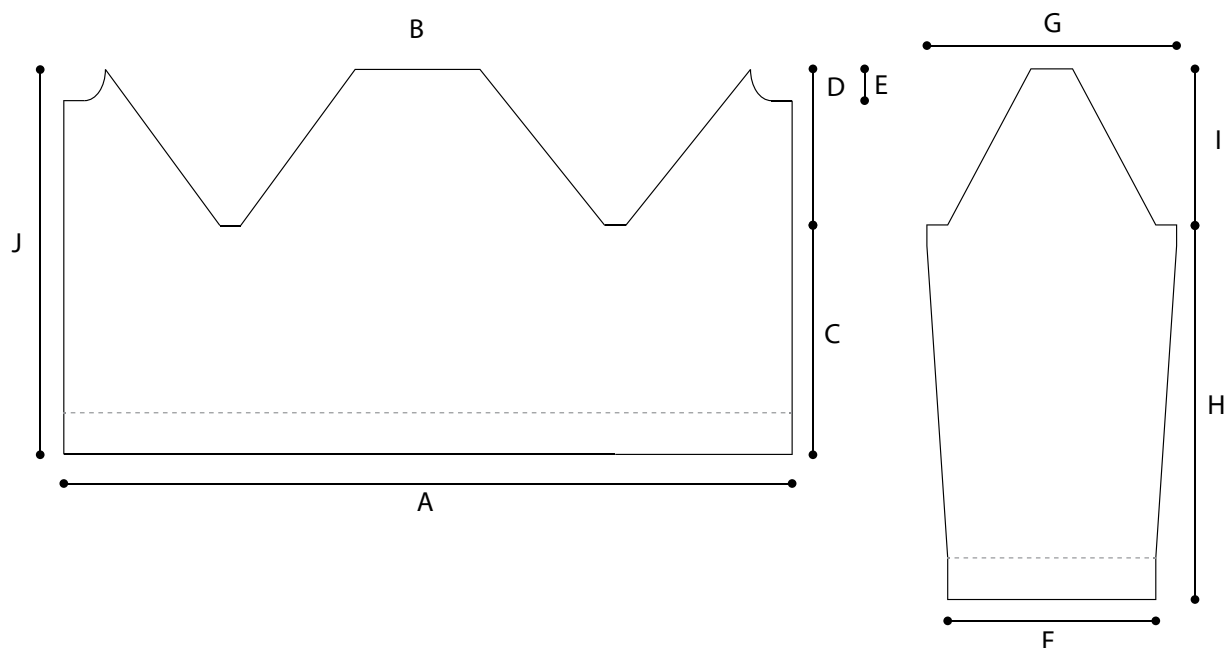
INSTRUCTIONS FOR CHART 2
Sizes 35½" / 90 cm, 38¾" / 98.5 cm, and 43" / 109 cm: On RS, work from B to A. On WS, work from A to B.
Sizes 46¾" / 118.5 cm, 50¾" / 129 cm, 54¾" / 139 cm, and 58¾" / 149 cm: On RS, work from C to A. On WS, work from A to C.
Sizes 62½" / 159 cm, 66½" / 169 cm, and 70½" / 179 cm: On RS, work from D to A. On WS, work from A to D.

INSTRUCTIONS FOR CHART 3
Work from right to left on RS rows and f to right on WS rows.

CHART 3



BRIAR SCHEMATIC



BRIAR MEASUREMENTS

- A** (Bust Circumference, not including buttonband): (34½, 37¾, 42) [45¾, 49¾, 53¾, 57¾] {61½, 65½, 69½}" / (87.5, 96, 106.5) [116, 126.5, 136.5, 146.5] {156, 166.5, 176.5} cm
- B** (Back Neck Width): (6¼, 6¼, 6¼) [6¾, 6¾, 6¾, 6¾] {6¾, 6¾, 6¾}" / (16, 16, 16) [17, 17, 17, 17] {17, 17, 17} cm
- C** (Length to Underarms): 10" / 25.5 cm
- D** (Armhole Length): (6¼, 6¼, 6½) [7, 7½, 8, 8½] {9, 9¾, 10½}" / (16, 16, 16.5) [18, 19, 20.5, 21.5] {23, 25, 26.5} cm
- E** (Front Neck Depth): 1½" / 4 cm
- F** (Sleeve Cuff Width): 9" / 23 cm
- G** (Upper Sleeve Width): (12½, 13½, 14½) [15½, 16½, 17½, 18½] {19½, 20½, 21½}" / (31.5, 34.5, 37) [39.5, 42, 44.5, 47] {49.5, 52, 54.5} cm
- H** (Sleeve Length): 18" / 45.5 cm
- I** (Sleeve Cap Length): (6¼, 6¼, 6½) [7, 7½, 8, 8½] {9, 9¾, 10½}" / (16, 16, 16.5) [18, 19, 20.5, 21.5] {23, 25, 26.5} cm
- J** (Total Length): (16¾, 16¾, 17) [17½, 18, 18½, 19] {19½, 20¼, 21}" / (42.5, 42.5, 43) [44.5, 45.5, 47, 48.5] {49.5, 51.5, 53.5} cm



STANDARD ABBREVIATIONS & TERMS

beg: beginning
BOR: beginning of round
CC: contrasting color
CDD: Centered Double Decrease—Slip 2 together (as if to k2tog), knit 1, pass the 2 slipped stitches over
cn: cable needle
dec: decrease
dpn(s): double pointed needle(s)
end on WS: end having just completed a Wrong Side row.
end on RS: end having just completed a Right Side row
Garter St: Knit EVERY row when working back and forth in rows. Knit 1 round, purl 1 round when working in the round.
inc: increase
k: knit
k tbl: knit through the back loop(s)
k2tog: knit 2 stitches together
k3tog: knit 3 stitches together
kfb: knit in the front and back of the next st
LH: left hand
LLI: Left Lifted Increase—Insert LH needle into the purl bump one row below the st just worked on the RH needle and knit into this st (1 st inc'd)
M1: Make 1—Pick up horizontal strand between stitch just worked and next stitch from front to back, place on left hand needle, knit this stitch through the back (1 stitch increased).
M1L: Make 1 Left—Work as for M1.
M1p: Make 1 purl—Pick up horizontal strand between stitch just worked and next stitch from front to back, place on left hand needle, purl this stitch through the back (1 stitch increased).
M1pL: Make 1 purl Left—Work as for M1p.
M1pR: Make 1 purl Right—Pick up horizontal strand between stitch just worked and next stitch from back to front, place on left hand needle, purl this stitch through the front (1 stitch increased).
M1R: Make 1 Right—Pick up horizontal strand between stitch just worked and next stitch from back to front, place on left hand needle, knit this stitch through the front (1 stitch increased).
MC: main color
p: purl
p tbl: purl through the back loop(s)
p2tog: purl 2 stitches together
p3tog: purl 3 stitches together
pat(s): pattern(s)
pm: place marker

psso: pass slipped stitch over knit stitch
rep: repeat
Rev St st: Reverse Stockinette Stitch—Purl 1 row, knit 1 row alternately when working back and forth in rows. The purl side is the right side of the work. Purl EVERY round when working in the round.
RH: right hand
RLI: Right Lifted Increase—Insert RH needle into the purl bump of the next st on the LH needle and knit into this st (1 st inc'd)
rnd(s): round(s)
RS: right side
sl: slip
sm: slip marker
SSK: Slip 2 stitches knitwise, insert point of left hand needle through fronts of these 2 stitches and knit 2 together.
SSP: Slip 2 stitches knitwise, transfer these 2 stitches back to left hand needle, purl 2 together through the back loops.
SSSK: Slip 3 stitches knitwise, insert point of left hand needle through fronts of these 3 stitches and knit 3 together.
st(s): stitch(es)
St st: Stockinette Stitch—Knit 1 row, purl 1 row alternately when working back and forth in rows. The knit side is the right side of work. Knit EVERY round when working in the round.
tbl: through back loop(s)
w&t: wrap and turn, a method of concealing a hole created in short row shaping. On RS rows: With yarn held in front, slip next stitch purlwise, then bring yarn between needles to the back. Slip that same stitch back to the left needle. Turn your work. On WS Rows: With yarn held in back, slip next stitch purlwise, then bring yarn between needles to the front. Slip that same stitch back to the left needle. Turn your work. Unless otherwise indicated, each time you come to a wrapped stitch when working subsequent rows, slip the wrap back over stitch and onto needle, then work the wrap together with its accompanying stitch.
WS: wrong side
wyib: with yarn in back
wyif: with yarn in front
yo: yarn over

QUESTIONS?

Scan the QR code for the Berroco Learning Center where you will find our fit guide, how-to videos, the complete glossary and more.

