

Barachois

Designed by the Berroco Design Team / Skill level: Intermediate



FINISHED MEASUREMENTS

Circumference (at bottom edge):

52 (56, 60, 64, 68)"

Length: 16½ (16¾, 17½, 17¾, 18½)"

(Not including turtleneck)

Shown in size 52".

YARN

BERROCO ULTRA ALPACA CHUNKY

(100 grs): 5 (6, 6, 7, 7) hanks #72183

Garnet Mix

NEEDLES and NOTIONS

16" and 29" length circular needles,
size 10 (8.00 mm) *or size to obtain
gauge*

16" length circular knitting needle,
size 8 (5.00 mm)

Cable needle (cn)

12 stitch markers (1 a different
color for beginning of round)

GAUGE

14 sts and 23 rnds = 4" in Reverse
St st on larger needles

30 sts = 7" and 23 rows/rnds = 4" in
Cable Pattern

*To save time and ensure accurate
measurements, take time to check
gauge.*

**Berroco Ultra® Alpaca
Chunky**

Find this Yarn 



BERROCO®



www.berroco.com

We recommend using yarns called for in our instructions. Every effort has been made to ensure that directions contained in this book are accurate and complete, however errors do occur. We cannot be responsible for variance of individual knitters, human or typographical errors.

All pattern PDFs are updated when corrections are made. In the event of finding an error, please make sure you've downloaded the most recent version.

SPECIAL ABBREVIATIONS

CB4: Slip 2 sts to cn and hold in BACK, k2, k2 from cn

CF4: Slip 2 sts to cn and hold in FRONT, k2, k2 from cn

CABLE PATTERN (Worked in rows over 30 sts)

Row 1 and all WS rows: * K4, p8, k2, rep from * once more, end k2.

Row 2 (RS): * K2, p2, k8, p2, rep from * once more, end k2.

Row 4: * K2, p2, CB4, CF4, p2, rep from * once more, end k2.

Row 6: Rep Row 2.

Row 8: * K2, p2, CF4, CB4, p2, rep from * once more, end k2.

Rep these 8 rows for Cable Pattern worked in rows.

CABLE PATTERN (Worked in the round over 30 sts)

Rnds 1, 3, 5, and 7: * P4, k8, p2, rep from * once more, end k2.

Rnds 2 and 6: * K2, p2, k8, p2, rep from * once more, end p2.

Rnd 4: * K2, p2, CB4, CF4, p2, rep from * once more, end p2.

Rnd 8: * K2, p2, CF4, CB4, p2, rep from * once more, end p2.

Rep these 8 rounds for Cable Pattern in the round.

NOTE

This capelet is worked flat in 2 sections for 2½", then joined and worked in one piece in the round to the neck.

BACK

With shorter circular needle, cast on 102 (108, 114, 122, 128) sts. DO NOT join.

Establish Cable Pat: Row 1 (WS): P2, pm, work Row 1 of Cable Pattern (in rows) over 30 sts, pm, k16 (19, 22, 28, 34), pm, p2, k2, p2, pm, k16 (19, 22, 28, 34), pm, work Row 1 of Cable Pattern (in rows) over 30 sts, pm, p2.

Row 2 (RS): K2, sm, work Row 2 of Cable Pattern to next marker, sm, purl to next marker, sm, k6, sm, purl to next marker, sm, work Row 2 of Cable Pattern to last marker, sm, k2. Work even in pattern as established until 5 rows (total) have been completed, end on WS.

Inc Row (RS): K2, sm, work Cable Pattern worked flat to next marker, sm, purl to next marker, M1p, sm, k6, sm, M1p,





purl to next marker, sm, work Cable Pattern worked flat to last marker, sm, k2—2 sts inc'd. Rep Inc Row every RS row twice more, end on WS—108 (114, 120, 128, 134) sts. Work even if necessary until piece measures 2½" from beginning, end on WS. Break off yarn, leaving stitches on needle.

FRONT

Work as for Back, using longer circular needle. When all incs have been completed and piece measures approximately 2½", end on WS, ending on same chart row as on Back—108 (114, 120, 128, 134) sts.

Joining Rnd: Work 108 (114, 120, 128, 134) sts of Front, cast on 2 sts, work 108 (114, 120, 128, 134) sts of Back from shorter circular needle, cast on 2 sts—220 (232, 244, 260, 272) sts. Place beg-of-rnd marker and join for working in the round. **Note:** you will now be working from the Cable Pattern in the round); begin with the corresponding next row to keep pattern consistent.

Next Rnd: * K2, sm, work Cable Pattern (in the round) to next marker, sm, purl to next marker, sm, k2, p2, k2, sm, purl to next marker, work Cable Pattern (in the round) to next marker, sm, k2, p2, rep from * once more.

Following Rnd: * K2, sm, work Cable Pattern to next marker, sm, purl to next marker, sm, k6, sm, purl to next marker, work Cable Pattern to next marker, sm, k4, rep from * once more.

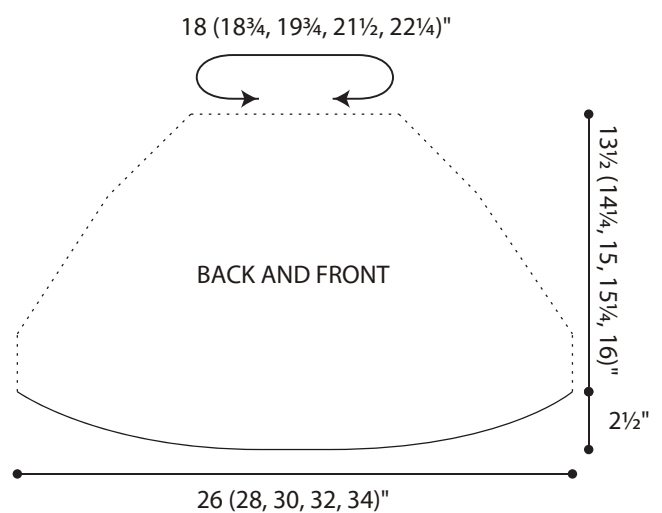
Note: As you decrease, you will be eliminating sts from the Cable Pattern sections. Be sure to keep remaining Cable Pattern sts in pattern as possible.

Dec Rnd: * K1, slip next stitch to RH needle, remove marker, slip stitch back to LH needle, SSK, replace marker, work Cable Pattern to next marker, sm, purl to 1 st before next marker, slip next stitch to RH needle, remove marker, slip stitch back to LH needle, replace marker, k2tog, k1, p2, k1, slip next stitch to RH needle, remove marker, slip stitch back to LH needle, SSK, replace marker, purl to next marker, sm, work Cable Pattern to 1 st before next marker, slip next stitch to RH needle, remove marker, slip stitch back to LH needle, replace marker, k2tog, p2, rep from * once more—8 sts dec'd. Working in pattern as established, rep Dec Rnd every 6th rnd 7 (7, 7, 6, 6) times more, then every 4th rnd 9 (10, 11, 13, 14) times—84 (88, 92, 100, 104) sts.

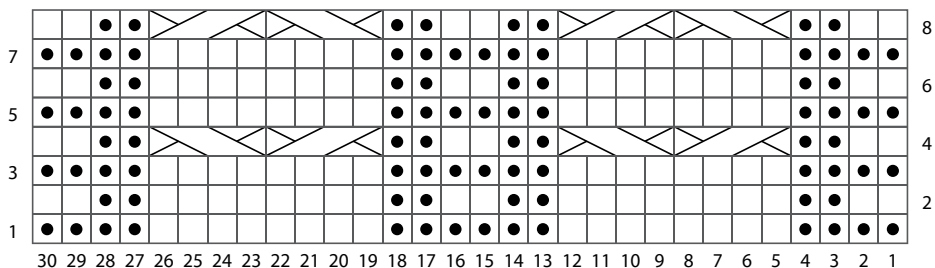
Turtleneck: Removing all markers except for beg-of-rnd marker, change to smaller 16" length circular needle and work even in k2, p2 ribbing for 5". Change to larger 16" length circular needle and work even in k2, p2 ribbing until turtleneck measures 10" from beginning. Bind off loosely in ribbing.

FINISHING

Weave in all ends and block as desired.



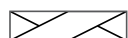
BARACHOIS CHART



KEY TO CHARTS

 knit on RS; purl on WS

 purl on RS; knit on WS

 CB4: sl 2 to cn and hold to BACK, k2, k2 from cn

 CF4: sl 2 to cn and hold to FRONT, k2, k2 from cn

CHART NOTES

When working in rows, work from right to left on RS rows and from left to right on WS rows.

When working in the round, work from right to left on every rnd.

STANDARD ABBREVIATIONS & TERMS

beg: beginning

CC: contrasting color

CDD: Centered Double Decrease—Slip 2 together (as if to k2tog), knit 1, pass the 2 slipped stitches over

cn: cable needle

dec: decrease

dpn(s): double pointed needle(s)

end on WS: end having just completed a Wrong Side row.

end on RS: end having just completed a Right Side row

Garter St: Knit EVERY row when working back and forth in rows. Knit 1 round, purl 1 round when working in the round.

inc: increase

k: knit

k tbl: knit through the back loop(s)

k2tog: knit 2 stitches together

k3tog: knit 3 stitches together

kfb: knit in the front and back of the next st

LH: left hand

LLI: Left Lifted Increase—Insert LH needle into the purl bump one row below the st just worked on the RH needle and knit into this st (1 st inc'd)

M1: Make 1—Pick up horizontal strand between stitch just worked and next stitch from front to back, place on left hand needle, knit this stitch through the back (1 stitch increased).

M1L: Make 1 Left—Work as for M1.

M1p: Make 1 purl—Pick up horizontal strand between stitch just worked and next stitch from front to back, place on left hand needle, purl this stitch through the back (1 stitch increased).

M1pL: Make 1 purl Left—Work as for M1p.

M1pR: Make 1 purl Right—Pick up horizontal strand between stitch just worked and next stitch from back to front, place on left hand needle, purl this stitch through the front (1 stitch increased).

M1R: Make 1 Right—Pick up horizontal strand between stitch just worked and next stitch from back to front, place on left hand needle, knit this stitch through the front (1 stitch increased).

MC: main color

p: purl

p tbl: purl through the back loop(s)

p2tog: purl 2 stitches together

p3tog: purl 3 stitches together

pat(s): pattern(s)

pm: place marker

pssso: pass slipped stitch over knit stitch

rep: repeat

Rev St st: Reverse Stockinette Stitch—Purl 1 row, knit 1 row alternately when working back and forth in rows. The purl side is the right side of the work. Purl EVERY round when working in the round.

RH: right hand

RLI: Right Lifted Increase—Insert RH needle into the purl bump of the next st on the LH needle and knit into this st (1 st inc'd)

rnd(s): round(s)

RS: right side

sl: slip

sm: slip marker

SSK: Slip 2 stitches knitwise, insert point of left hand needle through fronts of these 2 stitches and knit 2 together.

SSP: Slip 2 stitches knitwise, transfer these 2 stitches back to left hand needle, purl 2 together through the back loops.

SSSK: Slip 3 stitches knitwise, insert point of left hand needle through fronts of these 3 stitches and knit 3 together.

st(s): stitch(es)

St st: Stockinette Stitch—Knit 1 row, purl 1 row alternately when working back and forth in rows. The knit side is the right side of work. Knit EVERY round when working in the round.

tbl: through back loop(s)

w&t: wrap and turn, a method of concealing a hole created in short row shaping. On RS rows: With yarn held in front, slip next stitch purlwise, then bring yarn between needles to the back. Slip that same stitch back to the left needle. Turn your work. On WS Rows: With yarn held in back, slip next stitch purlwise, then bring yarn between needles to the front. Slip that same stitch back to the left needle. Turn your work. Unless otherwise indicated, each time you come to a wrapped stitch when working subsequent rows, slip the wrap back over stitch and onto needle, then work the wrap together with its accompanying stitch.

WS: wrong side

wyib: with yarn in back

wyif: with yarn in front

yo: yarn over

Love Berroco patterns?
Sign up for our **KnitBits®** newsletter.

