

# Ashaway

Designed by the Berroco Design Team / Skill level: Intermediate



## FINISHED MEASUREMENTS

Bust (closed): 32½ (37, 42, 47, 51, 56, 61)"

Length: 22½ (23, 23½, 23½, 24, 24½, 25)"

Shown in size 37". Suggested ease: 0–4" positive ease.

## YARN

**BERROCO VINTAGE** (100 grs): 4 (5, 6, 6, 7, 7, 8) hanks #5100 Snow Day (MC) and 1 hank #5195 Macaron (CC)

## NEEDLES and NOTIONS

Knitting needles, sizes 6 (4.00 mm) and 7 (4.50 mm) or size to obtain gauge

Seven ¾" buttons

## GAUGE

20 sts and 27 rows = 4" in St st on larger needles

*To save time and ensure accurate measurements, take time to check gauge.*

**Berroco Vintage®**

Find this Yarn 



BERROCO®



[www.berroco.com](http://www.berroco.com)



*We recommend using yarns called for in our instructions. Every effort has been made to ensure that directions contained in this book are accurate and complete, however errors do occur. We cannot be responsible for variance of individual knitters, human or typographical errors.*

*All pattern PDFs are updated when corrections are made. In the event of finding an error, please make sure you've downloaded the most recent version.*

## NOTE

When changing colors, hold yarn to the left and pick up new color from underneath. This twists yarn so there are no holes. Do not carry yarn across more than 3 sts without twisting colors together on WS to prevent long loops.

## BACK

With smaller needles, using MC, cast on 81 (93, 105, 117, 129, 141, 153) sts. Join CC.

**Corrugated Rib: Row 1 (RS):** With MC, k2, \* with CC, p1, with MC, k1; rep from \* to last stitch, end with MC, k1.

**Row 2:** With MC, p2, \* with CC, k1, with MC, p1; rep from \* to last stitch, end with MC, p1. Rep these 2 rows until piece measures 2" from beginning. Change to larger needles and work in St st, following colorwork chart, until 23 rows have been completed. Fasten off CC and work from here with MC only. Beginning with a purl row, work even in St st until piece measures 15" from beginning, end on WS.

**Shape Raglan Armholes:** Bind off 4 (5, 6, 7, 8, 9, 10) sts at beginning of the next 2 rows—73 (83, 93, 103, 113, 123, 133) sts. Work 2 (2, 2, 0, 0, 0, 0) rows even, end on WS.

**For Sizes 47, 51, 56, and 61 ONLY: Dec Row 1 (RS):** K1, k2tog, knit to last 4 sts, sl 1, k2tog, pssso, k1—4 sts dec'd. Rep Dec Row 1 every RS row X (X, X, 0, 3, 8, 10) times more, end on WS—X (X, X, 99, 97, 87, 89) sts.

**For ALL Sizes: Dec Row 2 (RS):** K1, k2tog, knit to last 3 sts, SSK, k1—2 sts dec'd. Rep Dec Row 2 every 4th row 9 (6, 3, 0, 0, 0, 0) times more, then every RS row 6 (14, 22, 28, 27, 22, 23) times more, end on WS. Bind off remaining 41 sts.

## LEFT FRONT

With smaller needles, using MC, cast on 39 (45, 51, 57, 63, 69, 75) sts. Join CC and work Corrugated Rib as for back for 2", end on WS. Change to larger needles and work in St st, following colorwork chart until 23 rows have been completed, end on WS. Fasten off CC and work from here with MC only. Beginning with a purl row, work even in St st until piece measures 15" from beginning, end on WS.

**Shape Raglan Armhole: Next Row (RS):** Bind off 4 (5, 6, 7,



8, 9, 10) sts at beginning of the next row, knit to end—35 (40, 45, 50, 55, 60, 65) sts. Work 3 (3, 3, 1, 1, 1, 1) row(s) even, end on WS.

**Note:** Please read through this next section carefully before starting to knit. You will be shaping raglan armhole and neck AT THE SAME TIME and will need to keep track of decs at each edge separately.

**For Sizes 47, 51, 56, and 61 ONLY:**

**Dec Row 1 (RS):** K1, k3tog, knit to end—2 sts dec'd at armhole. Rep Dec Row 1 every RS row X (X, X, 0, 3, 8, 10) times more, end on WS—X (X, X, 48, 47, 42, 43) sts.

**For ALL Sizes: Dec Row 2 (RS):** K1, k2tog, knit to end—1 st dec'd. Rep Dec Row 1 every 4th row 9 (6, 3, 0, 0, 0, 0) times more, then every RS row 6 (14, 22, 28, 27, 22, 23) times

more, end on WS. AT THE SAME TIME, when armhole measures 2½ (3, 3½, 3½, 4, 4, 5)", end on RS.

**Shape Neck: Next Row (WS):** Bind off 5 sts, purl to end. Continuing to dec at armholes as before, dec 1 st at neck edge every RS row 9 times, then every 4th row 4 times. When all armhole and neck decs have been completed, fasten off last stitch.

## RIGHT FRONT

Work as for left front until piece measures 15" from beginning, end on RS—39 (45, 51, 57, 63, 69, 75) sts.

**Shape Raglan Armhole: Next Row (WS):** Bind off 4 (5, 6, 7, 8, 9, 10) sts at beginning of the next row, purl to end—35 (40, 45, 50, 55, 60, 65) sts. Work 2 (2, 2, 0, 0, 0, 0) rows even, end on WS.

**Note:** Please read through this next section carefully before starting to knit. You will be shaping raglan armhole and neck AT THE SAME TIME and will need to keep track of decreases at each edge separately.

**For Sizes 47, 51, 56 and 61 ONLY: Dec Row 1 (RS):** Knit to last 4 sts, sl 1, k2tog, pssso, k1—2 sts dec'd. Rep Dec Row 1 every RS row X (X, X, 0, 3, 8, 10) times more, end on WS—X (X, X, 48, 47, 42, 43) sts.

**For ALL Sizes: Dec Row 2 (RS):** Knit to last 3 sts, SSK, k1—1 st dec'd. Rep Dec Row 2 every 4th row 9 (6, 3, 0, 0, 0, 0) times more, then every RS row 6 (14, 22, 28, 27, 22, 23) times more, end on WS. AT THE SAME TIME, when armhole measures 2½ (3, 3½, 3½, 4, 4, 5)", end on WS.



**Shape Neck: Next Row (RS):** Bind off 5 sts, purl to end. Continuing to decrease at armholes as before, dec 1 st at neck edge every RS row 9 times, then every 4th row 4 times. When all armhole and neck decs have been completed, fasten off last stitch.

## SLEEVES

With smaller needles, using MC, cast on 45 sts. Work in Corrugated Rib as for back for 2", end on WS. Change to larger needles and work in St st, following colorwork chart for 1", end on WS.

**Inc Row (RS):** K1, M1L, knit to last st, M1R, k1—2 sts inc'd. Rep Inc Row every 2 (2, 1½, 1, 1, ¾, ¾)" 7 (7, 9, 12, 14, 17, 19) times more, working incs into colorwork pattern.

**Note:** When 23 rows of chart have been completed, fasten off CC and work from there with MC only. When all incs have been completed, work even on 61 (61, 65, 71, 75, 81, 85) sts until sleeve measures 18" from beginning, end on WS.

**Shape Raglan Cap:** Bind off 4 (5, 6, 7, 8, 9, 10) sts at beginning of the next 2 rows—53 (51, 53, 57, 59, 63, 65) sts. Work 2 rows even, end on WS.

**Dec Row (RS):** K1, k2tog, knit to last 3 sts, SSK, k1—2 sts dec'd. Rep Dec Row every 4th row 4 (7, 8, 6, 7, 5, 7) times more, then every RS row 16 (12, 12, 16, 16, 20, 19) times, end on WS. Bind off remaining 11 sts.



## FINISHING

Sew raglan sleeve caps to raglan armholes. Sew side and sleeve seams.

**Left Front Band:** With RS facing, using smaller needles and MC, begin at neck shaping, pick up and knit 111 (113, 115, 115, 117, 119, 121) sts along left front edge.

**Row 1 (WS):** P1, \* k1, p1; rep from \* across.

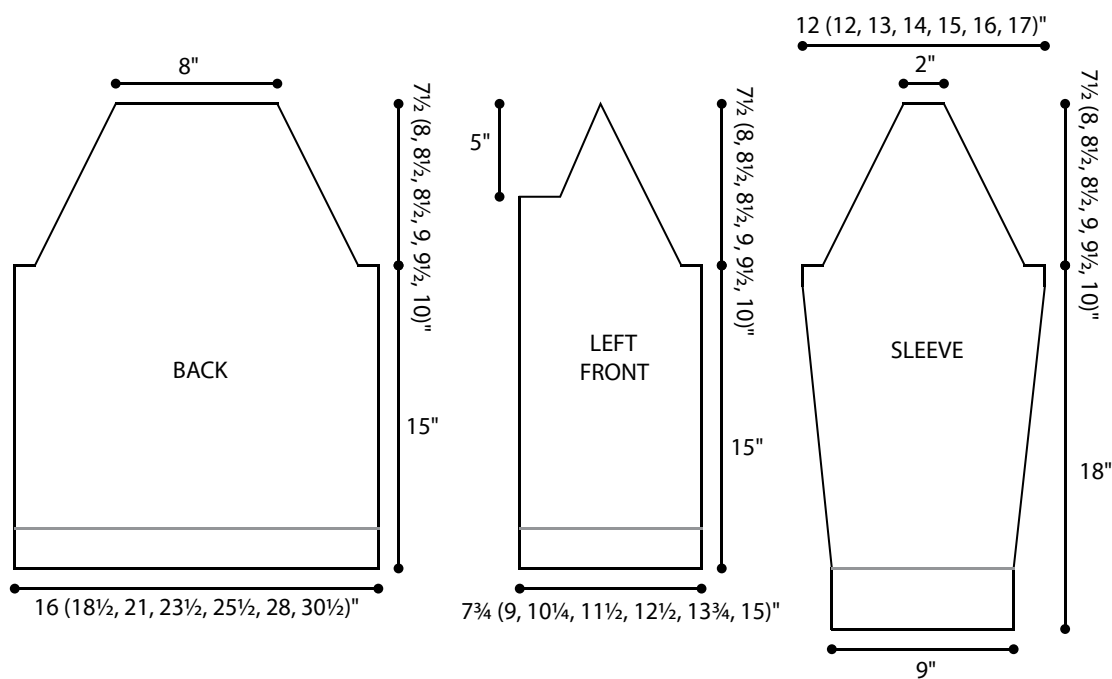
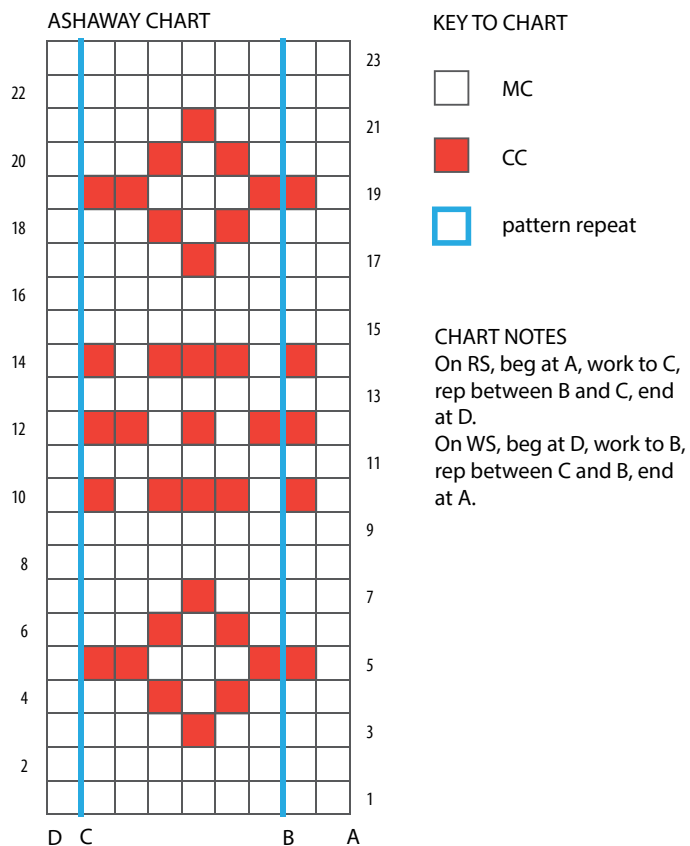
**Row 2:** K1, \* p1, k1; rep from \* across. Rep these 2 rows until band measures 1", end on WS. Bind off in ribbing.

**Right Frontband:** With RS facing, using smaller needles and MC, begin at lower edge, pick up and knit 111 (113, 115, 115, 117, 119, 121) sts along right front edge. Work as for left frontband for 1 row, end on WS.

**Buttonhole Row (RS):** Work 5 (6, 5, 6, 6, 6, 5) sts, yo, k2tog, \* work 16 (16, 17, 17, 17, 17, 18) sts, yo, k2tog, rep from \* 4 times more, work to end—6 buttonholes (7th will be in neckband). Complete as for left frontband.

**Neckband:** With RS facing, using smaller needles and MC, begin at right front edge, pick up and knit 113 sts around entire neck edge. Work as for left frontband for 1 row, end on WS.

**Buttonhole Row (RS):** Work 3 sts, yo, k2tog, work to end. Complete as for left front band. Weave in all ends and block as desired. Sew on buttons.



## STANDARD ABBREVIATIONS & TERMS

**beg:** beginning

**CC:** contrasting color

**CDD:** Centered Double Decrease—Slip 2 together (as if to k2tog), knit 1, pass the 2 slipped stitches over

**cn:** cable needle

**dec:** decrease

**dpn(s):** double pointed needle(s)

**end on WS:** end having just completed a Wrong Side row.

**end on RS:** end having just completed a Right Side row

**Garter St:** Knit EVERY row when working back and forth in rows. Knit 1 round, purl 1 round when working in the round.

**inc:** increase

**k:** knit

**k tbl:** knit through the back loop(s)

**k2tog:** knit 2 stitches together

**k3tog:** knit 3 stitches together

**kfb:** knit in the front and back of the next st

**LH:** left hand

**LLI:** Left Lifted Increase—Insert LH needle into the purl bump one row below the st just worked on the RH needle and knit into this st (1 st inc'd)

**M1:** Make 1—Pick up horizontal strand between stitch just worked and next stitch from front to back, place on left hand needle, knit this stitch through the back (1 stitch increased).

**M1L:** Make 1 Left—Work as for M1.

**M1p:** Make 1 purl—Pick up horizontal strand between stitch just worked and next stitch from front to back, place on left hand needle, purl this stitch through the back (1 stitch increased).

**M1pL:** Make 1 purl Left—Work as for M1p.

**M1pR:** Make 1 purl Right—Pick up horizontal strand between stitch just worked and next stitch from back to front, place on left hand needle, purl this stitch through the front (1 stitch increased).

**M1R:** Make 1 Right—Pick up horizontal strand between stitch just worked and next stitch from back to front, place on left hand needle, knit this stitch through the front (1 stitch increased).

**MC:** main color

**p:** purl

**p tbl:** purl through the back loop(s)

**p2tog:** purl 2 stitches together

**p3tog:** purl 3 stitches together

**pat(s):** pattern(s)

**pm:** place marker

**pssso:** pass slipped stitch over knit stitch

**rep:** repeat

**Rev St st:** Reverse Stockinette Stitch—Purl 1 row, knit 1 row alternately when working back and forth in rows. The purl side is the right side of the work. Purl EVERY round when working in the round.

**RH:** right hand

**RLI:** Right Lifted Increase—Insert RH needle into the purl bump of the next st on the LH needle and knit into this st (1 st inc'd)

**rnd(s):** round(s)

**RS:** right side

**sl:** slip

**sm:** slip marker

**SSK:** Slip 2 stitches knitwise, insert point of left hand needle through fronts of these 2 stitches and knit 2 together.

**SSP:** Slip 2 stitches knitwise, transfer these 2 stitches back to left hand needle, purl 2 together through the back loops.

**SSSK:** Slip 3 stitches knitwise, insert point of left hand needle through fronts of these 3 stitches and knit 3 together.

**st(s):** stitch(es)

**St st:** Stockinette Stitch—Knit 1 row, purl 1 row alternately when working back and forth in rows. The knit side is the right side of work. Knit EVERY round when working in the round.

**tbl:** through back loop(s)

**w&t:** wrap and turn, a method of concealing a hole created in short row shaping. On RS rows: With yarn held in front, slip next stitch purlwise, then bring yarn between needles to the back. Slip that same stitch back to the left needle. Turn your work. On WS Rows: With yarn held in back, slip next stitch purlwise, then bring yarn between needles to the front. Slip that same stitch back to the left needle. Turn your work. Unless otherwise indicated, each time you come to a wrapped stitch when working subsequent rows, slip the wrap back over stitch and onto needle, then work the wrap together with its accompanying stitch.

**WS:** wrong side

**wyib:** with yarn in back

**wyif:** with yarn in front

**yo:** yarn over

Love Berroco patterns?  
Sign up for our **KnitBits®** newsletter.

