

Appledore

Designed by Alison Green / Skill level: Intermediate



SIZES

(1, 2)

To Fit: (Adult S-M, Adult L-XL)

FINISHED MEASUREMENTS

Approximately (18¼, 20¼)" / (46.5, 51.5) cm around x 9¾" / 25 cm high

YARN

BERROCO MERINO 401 (50 g):
(2, 3) balls #11293 Fern

NEEDLES and NOTIONS

16" / 40 cm circular needles, sizes 5 / 3.75 mm and 7 / 4.5 mm *or size to obtain gauge*

1 set double-pointed needles, or preferred needles for working small circumferences, size 7 / 4.5 mm

Cable needle

Stitch marker

Tapestry needle

Waste yarn to hold stitches

GAUGE

24 sts and 30 rounds = 4" / 10 cm in Pattern Stitch

Gauge is measured after blocking.

To save time and ensure accurate measurements, take time to check gauge.

Berroco Merino 401™

Find this Yarn 



BERROCO®



www.berroco.com



We recommend using yarns called for in our instructions. Every effort has been made to ensure that directions contained in this pattern are accurate and complete, however errors do occur. We cannot be responsible for variance of individual knitters, human or typographical errors.

All pattern PDFs are updated when corrections are made. In the event of finding an error, please make sure you've downloaded the most recent version.

SPECIAL ABBREVIATIONS

- 2/2 LC: Sl 2 sts to cn and hold in FRONT, k2, k2 from cn.
 2/2 RC: Sl 2 sts to cn and hold in BACK, k2, k2 from cn.
 2/2 LPC: Sl 2 sts to cn and hold in FRONT, p2, k2 from cn.
 2/2 RPC: Sl 2 sts to cn and hold in BACK, k2, p2 from cn.
 2/1 LPC: Sl 2 to cn and hold to FRONT, p1, k2 from cn.
 2/1 RPC: Sl 1 to cn and hold to BACK, k2, p1 from cn.
 2/2 LC Dec: Sl 2 to cn and hold to FRONT, k2tog, k2 from cn.
 2/2 RC Dec: Sl 2 to cn and hold to BACK, k2, SSK from cn.
 2/1 LC: Sl 2 to cn and hold to FRONT, k1, k2 from cn.
 2/1 RC: Sl 1 to cn and hold to BACK, k2, k1 from cn.

PATTERN STITCH

Multiple of 11 sts. Work from written instructions below or from chart.

- Rnds 1 and 2:** * P1, k8, p2; rep from * around.
Rnd 3: * P1, 2/2 LC, 2/2 RC, p2; rep from * around.
Rnds 4–6: Rep Rnd 1.
Rnd 7: * P1, 2/2 RPC, 2/2 LPC, p2; rep from * around.
Rnd 8: * P1, k2, p4, k2, p2; rep from * around..
Rnd 9: * 2/1 RPC, p4, 2/1 LPC, p1; rep from * around.
Rnds 10–12: * K2, p6, k2, p1; rep from * around..
Rnd 13: * 2/1 LPC, p4, 2/1 RPC, p1; rep from * around.
Rnd 14: Rep Rnd 8.
Rnd 15: Rep Rnd 3.
Rnd 16: Rep Rnd 1.
 Rep these 16 rounds for Pattern Stitch.



HAT INSTRUCTIONS

With smaller circular needle, cast on (110, 121) sts. Place marker and join for working in the round.

Work Rnds 1–4 of Pattern St 4 times, working the 11-st repeat (10, 11) times each round.

Change to larger circular needle and work Rnds 5–16 of Pattern St, then work Rnds 1–16 twice more. Piece should measure approximately 7" / 18 cm from cast-on.

Note: As you decrease, when there are too few stitches to fit comfortably on circular needle, change to dpns or preferred needles for working small circumferences.

Shape Crown: Work from written instructions below or from chart.

- Rnd 1:** * P1, k8, p2tog; rep from * around. (100, 110) sts.
Rnd 2: * P1, k8, p1; rep from * around.
Rnd 3: * P1, 2/2 LC, 2/2 RC, p1; rep from * around.
Rnds 4–6: Rep Rnd 2.
Rnd 7: Remove BOR marker, p1, replace BOR marker, * 2/2 RPC, 2/2 LPC, p2tog; rep from * around. (90, 99) sts.
Rnds 8–10: * K2, p4, k2, p1; rep from * around.
Rnd 11: * 2/2 LC Dec, 2/2 RC Dec, p1; rep from * around. (70, 77) sts.
Rnds 12–13: * K6, p1; rep from * around.
Rnd 14: * K5, SSK; rep from * around. (60, 66) sts.

Rnd 15: * 2/1 LC, 2/1 RC; rep from * around.

Rnds 16, 18, and 20: Knit.

Rnd 17: * SSK, k2, k2tog; rep from * around. (40, 44) sts.

Rnd 19: * SSK, k2tog; rep from * around. (20, 22) sts.

Rnd 21: [K2tog] around. (10, 11) sts.

Break yarn, leaving an approximately 8" / 20 cm long end.

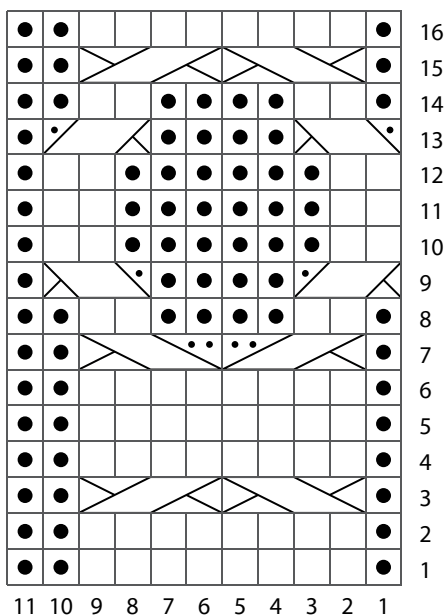
Thread end into tapestry needle and draw through all stitches on needles. Pull up tightly and secure, then fasten off.

FINISHING

Weave in all ends and block as desired.



PATTERN STITCH CHART



KEY TO CHARTS

knit

purl

2/2 LC: sl 2 to cn and hold to FRONT, k2, k2 from cn

2/2 RC: sl 2 to cn and hold to BACK, k2, k2 from cn

2/2 LPC: sl 2 to cn and hold to FRONT, p2, k2 from cn

2/2 RPC: sl 2 to cn and hold to BACK, k2, p2 from cn

2/1 LPC: sl 2 to cn and hold to FRONT, p1, k2 from cn

2/1 RPC: sl 1 to cn and hold to BACK, k2, p1 from cn

2/2 LC Dec: sl 2 to cn and hold to FRONT, k2tog, k2 from cn

2/2 RC Dec: sl 2 to cn and hold to BACK, k2, SSK from cn

2/1 LC: sl 2 to cn and hold to FRONT, k1, k2 from cn

2/1 RC: sl 1 to cn and hold to BACK, k2, k1 from cn

k2tog

SSK

CROWN SHAPING CHART

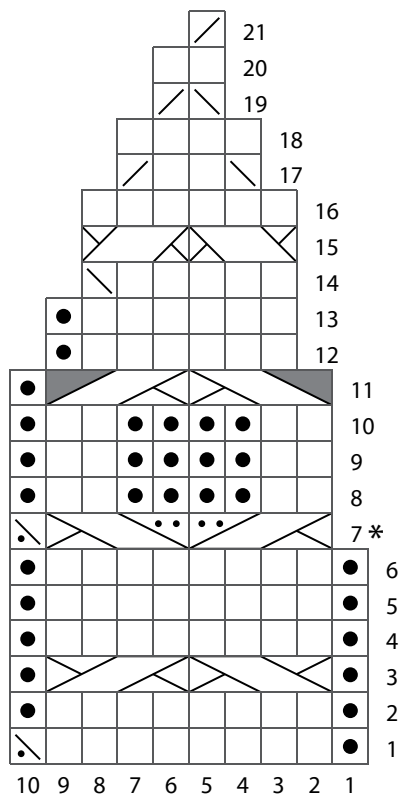


CHART NOTES

Work from right to left on every round.

* On Crown Shaping Chart Rnd 7, at the beginning of the round remove BOR marker, p1, then replace marker, moving the BOR one stitch to the left.

STANDARD ABBREVIATIONS & TERMS

beg: beginning
BOR: beginning of round
CC: contrasting color
CDD: Centered Double Decrease—Slip 2 together (as if to k2tog), knit 1, pass the 2 slipped stitches over
cn: cable needle
dec: decrease
dpn(s): double pointed needle(s)
end on WS: end having just completed a Wrong Side row.
end on RS: end having just completed a Right Side row
Garner St: Knit EVERY row when working back and forth in rows. Knit 1 round, purl 1 round when working in the round.
inc: increase
k: knit
k tbl: knit through the back loop(s)
k2tog: knit 2 stitches together
k3tog: knit 3 stitches together
kfb: knit in the front and back of the next st
LH: left hand
LLI: Left Lifted Increase—Insert LH needle into the purl bump one row below the st just worked on the RH needle and knit into this st (1 st inc'd)
M1: Make 1—Pick up horizontal strand between stitch just worked and next stitch from front to back, place on left hand needle, knit this stitch through the back (1 stitch increased).
M1L: Make 1 Left—Work as for M1.
M1p: Make 1 purl—Pick up horizontal strand between stitch just worked and next stitch from front to back, place on left hand needle, purl this stitch through the back (1 stitch increased).
M1pL: Make 1 purl Left—Work as for M1p.
M1pR: Make 1 purl Right—Pick up horizontal strand between stitch just worked and next stitch from back to front, place on left hand needle, purl this stitch through the front (1 stitch increased).
M1R: Make 1 Right—Pick up horizontal strand between stitch just worked and next stitch from back to front, place on left hand needle, knit this stitch through the front (1 stitch increased).
MC: main color
p: purl
p tbl: purl through the back loop(s)
p2tog: purl 2 stitches together
p3tog: purl 3 stitches together
pat(s): pattern(s)
pm: place marker

psso: pass slipped stitch over knit stitch
rep: repeat
Rev St st: Reverse Stockinette Stitch—Purl 1 row, knit 1 row alternately when working back and forth in rows. The purl side is the right side of the work. Purl EVERY round when working in the round.
RH: right hand
RLI: Right Lifted Increase—Insert RH needle into the purl bump of the next st on the LH needle and knit into this st (1 st inc'd)
rnd(s): round(s)
RS: right side
sl: slip
sm: slip marker
SSK: Slip 2 stitches knitwise, insert point of left hand needle through fronts of these 2 stitches and knit 2 together.
SSP: Slip 2 stitches knitwise, transfer these 2 stitches back to left hand needle, purl 2 together through the back loops.
SSSK: Slip 3 stitches knitwise, insert point of left hand needle through fronts of these 3 stitches and knit 3 together.
st(s): stitch(es)
St st: Stockinette Stitch—Knit 1 row, purl 1 row alternately when working back and forth in rows. The knit side is the right side of work. Knit EVERY round when working in the round.
tbl: through back loop(s)
w&t: wrap and turn, a method of concealing a hole created in short row shaping. On RS rows: With yarn held in front, slip next stitch purlwise, then bring yarn between needles to the back. Slip that same stitch back to the left needle. Turn your work. On WS Rows: With yarn held in back, slip next stitch purlwise, then bring yarn between needles to the front. Slip that same stitch back to the left needle. Turn your work. Unless otherwise indicated, each time you come to a wrapped stitch when working subsequent rows, slip the wrap back over stitch and onto needle, then work the wrap together with its accompanying stitch.
WS: wrong side
wyib: with yarn in back
wyif: with yarn in front
yo: yarn over

QUESTIONS?

Scan the QR code for the Berroco Learning Center where you will find our fit guide, how-to videos, the complete glossary and more.

