

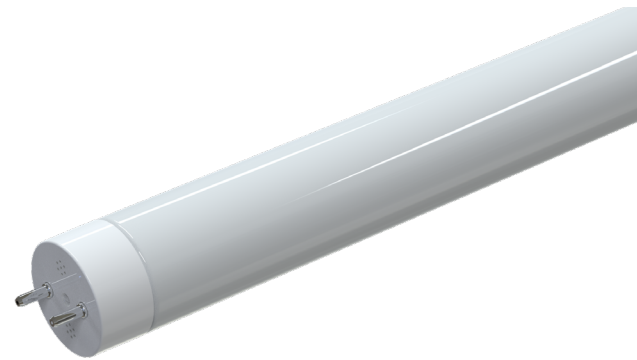
OVERVIEW

This LED T8 lamp is a perfect plug-and-play solution to convert existing fluorescent fixtures to LED. Designed to deliver 1800 and 2200 lumens, these lamps produce the same light output as a 32W fluorescent with less than half the power. The glass construction provides a strong, quick, and safe installation without any re-wiring of the ballast or fixture. Compatible with most electronic instant-start and programmed rapid-start T8 ballasts.

Catalog #		Type
Project		
Comments		Date
Prepared by		

KEY FEATURES

- Operation temperature: -4°F - 113°F
- Storage temperature: -40°F - 185°F
- THD: 20%
- Ignition time: <1.0 second
- Easy retrofit into most common linear fluorescent fixtures
- Compatible with most electronic instant-start ballasts
- Product is suitable for dry and damp locations
- Product is suitable for open and enclosed fixtures



BEAM
ANGLE



50,000
HOURS



TRUE
COLOR



FLICKER-
FREE



EASY TO
INSTALL



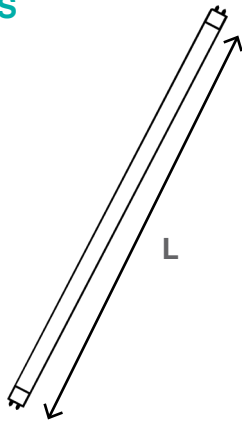
ORDERING INFORMATION

SOURCE	LAMP WATTAGE	LAMP TYPE	MATERIAL	CCT	OPERATION
L = LED	11 = 11W 14 = 14W	T8 = T8 Tube	G = Glass	40 = 4000K 50 = 5000K	A = UL Type A

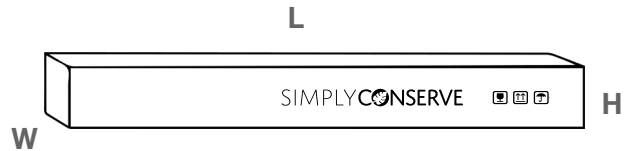
SPECIFICATIONS

ITEM #	LAMP WATTS	EFFICACY	CCT	LUMENS	CRI	VOLTAGE	PF	HZ	DIM
L11T8G40A	11W	163 lm/W	4000K	1800	≥80	BALLAST-DEPENDENT	≥0.9	50/60	No
L11T8G50A	11W	163 lm/W	5000K	1800	≥80	BALLAST-DEPENDENT	≥0.9	50/60	No
L14T8G40A	14W	157 lm/W	4000K	2200	≥80	BALLAST-DEPENDENT	≥0.9	50/60	No
L14T8G50A	14W	157 lm/W	5000K	2200	≥80	BALLAST-DEPENDENT	≥0.9	50/60	No

DIMENSIONS



CASE



CATALOG #	DIAMETER	L
L11T8G40A	1"	48"
L11T8G50A	1"	48"
L14T8G40A	1"	48"
L14T8G50A	1"	48"

CATALOG #	L	W	H	CASE QTY	GROSS WT
L11T8G40A	49"	6.3"	5.9"	25	13 lbs.
L11T8G50A	49"	6.3"	5.9"	25	13 lbs.
L14T8G40A	49"	6.3"	5.9"	25	13 lbs.
L14T8G50A	49"	6.3"	5.9"	25	13 lbs.

5-Year Limited Warranty



AM Conservation ("AMC") warrants this product to be free from manufacturing defects for a period of five years from the date of consumer purchase or distribution by an energy conservation program, and has been properly installed, AMC will replace the lamp free of charge.

For warranty claims, please contact:

customer@amconservationgroup.com

To learn more, please visit:

www.amconservationgroup.com