

installationguide

PURGE GAS MANIFOLD

from  **ARC-ZONE**
.COM



Center Purge Tube



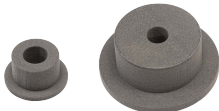
Manifold



Mounting Screws



Optional Chuck
(sold separately)



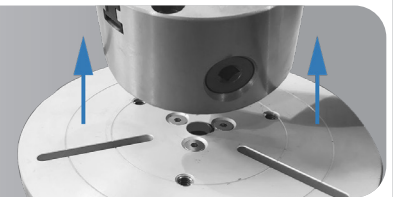
Bushing included
with chuck



Positioner

Step #1

Remove chuck & center hole insert, if one is installed on the turn table



Step #2

Rotate turn table to vertical position



Step #3

Remove plastic zip tie that holds the motor control wires



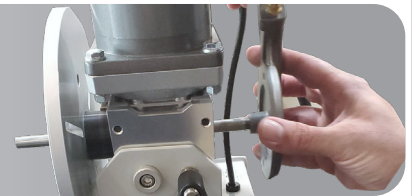
Step #4

Gently thread Center Purge Tube into purge manifold
(Do Not Over Tighten)



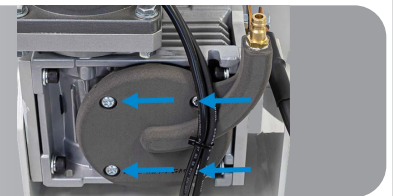
Step #5

From bottom of positioner, insert Center Purge Tube up through the center hole of positioner & through the turn table



Step #6

Mount purge manifold to the base of positioner with the 4 screws provided. Align brass quick disconnect fitting to face up
(Do Not Over Tighten)



NEXT PAGE 



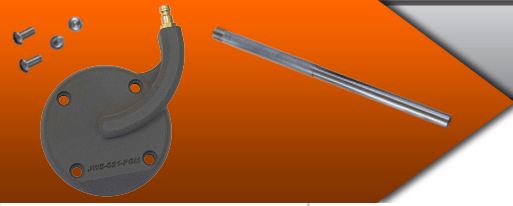
Copyright©2024, Arc-Zone.com®, Inc. All Rights Reserved

Arc-Zone.com, Inc.
Tel. 760-931-1500
sales@arc-zone.com

installationguide

PURGE GAS MANIFOLD

from  **ARC-ZONE**
.COM



Center Purge Tube



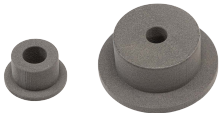
Manifold



Mounting Screws



Optional Chuck
(sold separately)



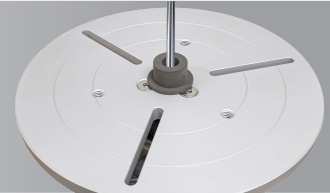
Bushing included
with chuck



Positioner

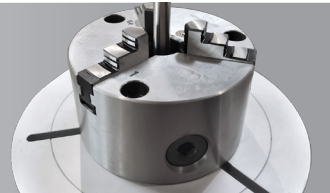
Step #7

Rotate turn table into horizontal position. Slide bushing over Center Purge Tube & seat on the turn table



Step #8

(Optional) Install chuck on plate



Step #9

Connect purge hose to Quick Disconnect fitting



Purge Manifold Tips & Best Practices

- Check all gas connections for leaks with soapy water
- Make sure gas hoses are free from kinks and restrictions
- Do not put undue stress on Center Purge Tube
- Remove black purge hose from manifold when not purging
- When rotating the positioner counter clockwise, make sure the Center Purge Tube has no interference that will cause it to un-thread from the manifold



Copyright©2024, Arc-Zone.com®, Inc. All Rights Reserved

Arc-Zone.com, Inc.

Tel. 760-931-1500
sales@arc-zone.com