

OPERATIONS MANUAL

A-PT-052

Digital Welding Positioner
OPERATIONS MANUAL
AND REPLACEMENT PARTS LIST

From



Sold By:



www.arc-zone.com
info@arc-zone.com
(760) 931-1500



ArcZone



@ArcZone



@Arc_Zone



ArcZoneVideos

Model: A-PT-052
Digital Welding Positioner



A-PT-052 Digital Welding Positioner

INSTRUCTIONS

TABLE OF CONTENTS

Introduction	4
Safety Precautions.....	5
Limited Warranty.....	6
General Information.....	6
Specifications.....	7
Function.....	9
Installation / Operation	10
Parts List.....	11
Circuit Diagram	13

Introduction



WARNING

Any procedure, which not properly followed, may cause injury to the operator or others in the operating area.



WARNING

Carefully read this manual regarding rules for user safety before installing, operating, or servicing the equipment.

Equipment identification

The identification number, model, and serial number of this unit can be found on a nameplate attached to the control panel. Please record these numbers for future reference.

Receipt of equipment

Upon receiving the equipment, please check the shipping list. Make sure it is complete and inspect the equipment for possible damage during shipping. If there is any damage, notify the carrier immediately to file a claim.

Safety Precautions



WARNING

Please be warned that operation and maintenance of the system involve potential hazards. All operators and personnel should take precautions to prevent possible injury.

Electrical safety

Machine

- The counter, safety device against excess current and electrical installation, are compatible with its maximum power and its main voltage.
- The connection, single-phase or three-phase, is possible on a stand compatible with the plug of its cable link.
- If the cable is connected with the electrical network, the earth must never be cut by the protection device against electrical shocks.

Work Place

- Avoid contact between metal part and phase conductor and the neutral of electric network.
- Electrical messes of different electrical machine and apparatus are connected between themselves and with the terminal of earth neutral wire.

Interventions

- Before control and repair, see the apparatus is switched off and insulated.
- Connection with fixed installation cable is impossible.
- It's on "Stop" and connection is impossible.
- Some apparatus are provided with starting circuit HTHF (with a plate). Never enter into the corresponding switch cupboard.
- Only qualified persons are authorized for intervention concerning electrical installation
- Often check the insulation and connection good state of apparatus and electrical accessories: taps, appliance cords, coatings, switch, extension cords, etc.
- Maintenance and repair of insulating coatings operations are very important.
- Do repair with a specialist or better replace defective accessories.
- Check regularly the right adjustment and the non-heating of electrical connections.

Note: There is a speed fluctuation of 0.06 RPMs, this is normal.

Maintenance

Limited Warranty

Arc-Zone.com, Inc tests and inspects all new welding positioners and warrants them against defects in material and workmanship.

Provided that the welding positioner is installed and operated according to the instructions contained herewith, Arc-Zone will warranty the welding positioner for one year from the date of purchase.

This warranty is expressly limited to replacement or repair of the defect based on the evaluation of and Arc-Zone Technician and excludes consumable parts that wear as a part of normal operation.

All repairs will be based on FOB Vista, CA.

Arc-Zone.com, Inc shall not be liable for any loss or consequential damage or incurred third party expenses resulting directly or indirectly from the use of the equipment covered by this warranty.

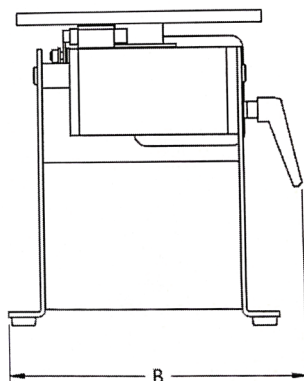
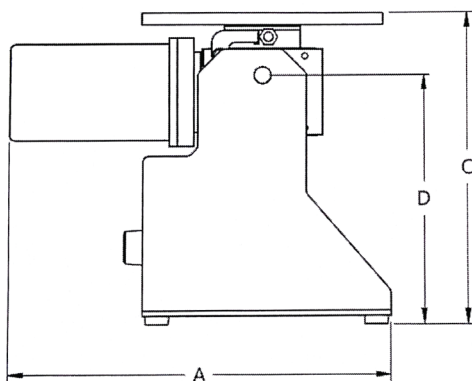
General Information

Features

1. High frequency interference tested.
2. Tilting angle ranged from 0~90° for different welding application.
3. Main shaft with 14mm through hole for pipe welding or shield gas.
4. Faceplate contains 3 straight slots for 3-jaws chuck mounting.
5. A centering guide is provided with the purchase of an Arc-Zone branded chuck for quick installation.

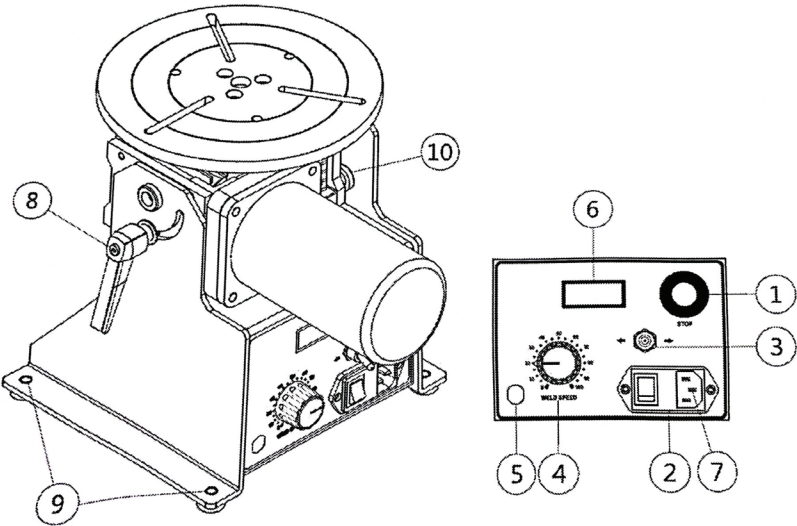
Specifications

Model	Unit	PT – 052
Power input	~	1Ø,100~240VAC,50/60Hz
Capacity (Horizontal / Vertical)	kg	50 / 30
Rated eccentricity	mm	30
Table dimension (E)	mm	Ø200
Rotation speed	rpm	0.5 ~ 8
Through hole diamter	mm	Ø14
Earthing	Amp	300
Tilt range	deg	0 ~ 90
Dimension (A x B x C)	mm	320 x 240 x 265
Center to floor (D)	mm	205
Weight	kg	10



Function

No.	Description	No.	Description
1	Stop button	6	Panel display
2	Power socket	7	Power cord
3	Forward / Reverse switch	8	Tilt Release / Locking handle
4	Speed Adjustment Knob	9	Mounting holes
5	Foot Switch	10	Grounding Stud



Installation / Operation

1. Power cord: Connect power to 100V~240VAC single phase power.

Note: Standard power plug: NEMA 5-15P. Adapters are provided for region with different power socket.

NEMA-5-15P



European Adapter



Australian Adapter



2. Grounding stud: Connect the grounding cable to system's grounding stud.
Warning: Unconnected grounding can cause system damage.
3. Tilt Release / Locking handle : Turn clockwise to tighten/lock, turn counterclockwise to release.
Warning: Do not turn the locking handle while loads are present on the faceplate.
4. Power switch (SW1): I = On, O = Off
5. Forward / Reverse switch (SW2): Reverse (⇐) / Forward (⇒)

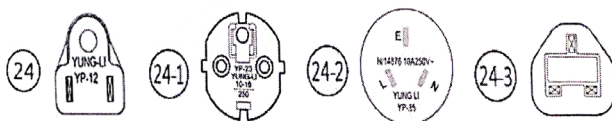
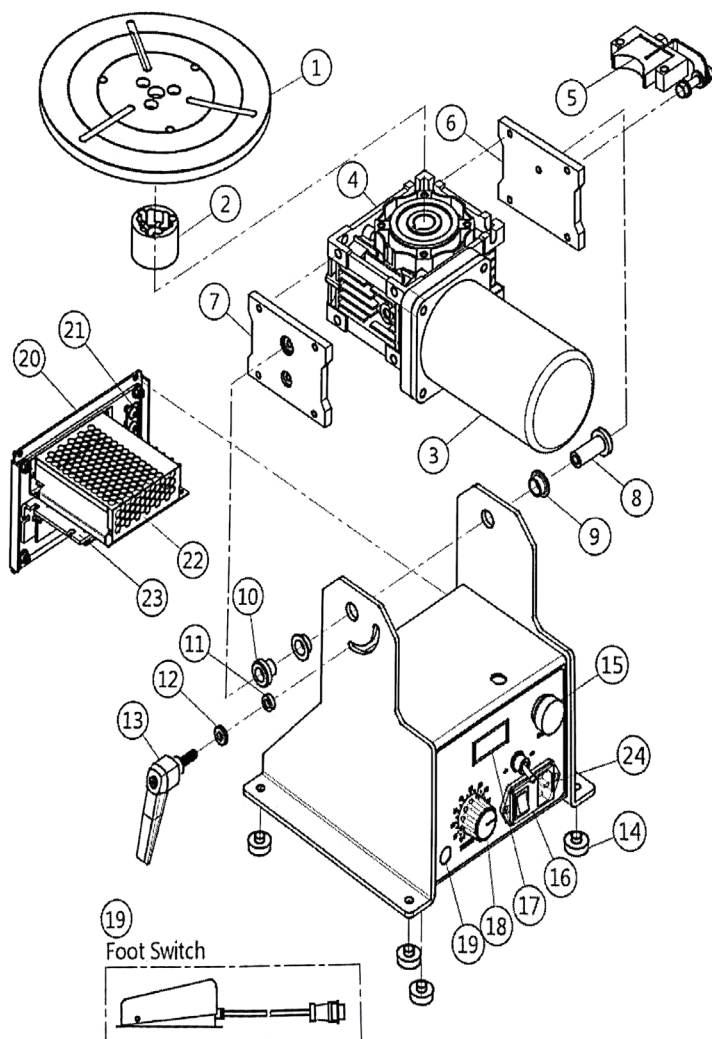


6. Stop: Press the Stop button to pause all motion and disable all control. Rotate the Stop button clockwise to reset.
7. Speed Adjustment Knob (VR1): Rotate clockwise to increase speed, counterclockwise to decrease speed.
8. Foot switch (F.S): Step onto the foot switch to start the faceplate rotation. Release the foot switch to stop the faceplate rotation.

Parts List

Item	Part No.	Description	Q'ty.	Remark
1	5005-1010000-10	Faceplate	1	
2	5005-1020000-10	Shaft	1	
3	* 0361-1103-9	PMDC Motor w/ cable terminals	1	
3-1	* 3169-1224-7	Encoder w/ connector & cover	1	
4	* 5005-0110000-10	Worm reducer	1	
5	* 5005-2010010-10	Carbon brush with case	1	
6	5005-1080000-10	Side plate	1	
7	5005-1090000-10	Side plate	1	
8	5005-1060000-10	Tilting shaft	1	
9	0331-1207	Self-Lubricating bearing	2	
10	5005-1070000-10	Tilting shaft	1	
11	5005-1050000-10	Tilting shaft	1	
12	5034-5820900-10	Spacer	1	
13	0130-0121	Handle	1	
14	0140-0372	Machine mount	4	
15	3214-2009	E.S Push button	1	
16	3445-2009	Power socket	1	
17	3922-1310	Printed circuit board	1	Display
17-1	3922-1310-1	Printed circuit board	1	Encoder
18	3216-0006	Knob	1	
18-1	3747-1001	Potentiometer	1	
19	3242-1117	Foot switch with cable 3M	1	F.S
20	5005-3020000-10	Cover plate	1	
21	3545-5001	Grounding copper bar	1	
22	3325-0006	Power supply	1	P.S
23	*6651-1010	Printed circuit board	1	Motor control board
24	3445-0001	Power cord	1	Standard
24-1	3456-0003	Power cord		European (Option)
24-2	3456-0004	Power cord		Australian (Option)
24-3	3456-0005	Power cord		U.K (Option)

* Recommended spare parts



Circuit Diagram

