



Order Online: WWW.RENNLINE.COM

EM Sales@rennline.com

PH 802.893.7366

FX 802.893.7311

Driven to improve excellence.

Porsche Fire Extinguisher Mount - Manual Seats- Driver or Passengers side

1974-1998 911/944

Check to make sure you that have all parts listed prior to installation. If anything is missing contact us immediately.

- (1) Aluminum Fire Extinguisher Mount Part A
- (1) Aluminum Fire Extinguisher Mount Part B
- (2) Aluminum Spacers

- (4) Hex Head Cap Screws M6 X18mm - MC91280A328
- (4) Washers M6- MC91166A250
- (6) Button Head Cap Screws 10/32 X.5 - MC92949A265
- (4) Button Head Cap Screws 10/32 X.625 - MC92949A267
- (20) Washers #10 - MC92141A011
- (10) Nyloc Nuts 10/32 - MC91831A411



Step 1 - Remove seat from car and position it so you can access seat bottom as shown.



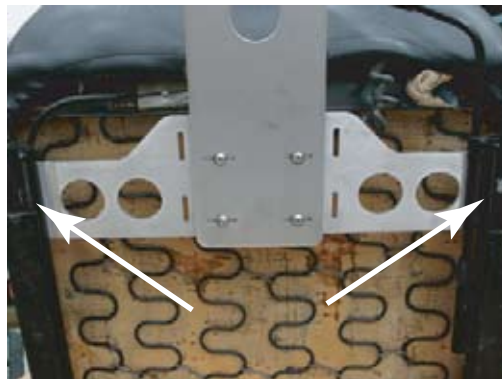
Step 2 - Remove seat rails.



Step 3 -Assemble bracket A+B as shown using the supplied 10/32 X.625" button head screws, nuts and washers. Leave screws loose so that adjustment can be made in step 8.



Step 4 - Position aluminum assembly on seat by aligning to (2) bolt holes with the seat rail mounting holes. Make sure that the machined grooves are pointing down.



Step 5 - Attach the 2 front mounting points of the seat rails to the seat with the supplied M6 bolts and washers. Leave bolts loose. Note: Aluminum mount is sandwiched between the seat and seat rails.



Step 6 - Insert the 2 spacer plates between the seat and the seat rail on the back 2 mounting points as shown using the supplied M6 bolts and washers. Once in place tighten all 4 mounting points .



Step 7 - Install fire extinguisher bracket using the supplied (6) 10/32X.5"button head screws, washers and nuts. This mount was designed for a standard Hal Guard bracket. If your mounting holes are different you may need to drill your bracket to properly fit.



Step 8 - Adjust the fire extinguisher to the desired location and tighten the 4 button head screws that were installed in step 3.



Step 9 - Install seat back into car and attach fire extinguisher