



Order Online: WWW.RENNLINE.COM

EM Sales@rennline.com

PH 802.655.5311

FX 802-655-6283

Driven to improve excellence.

Porsche Fire Extinguisher Mount - Power Seats- Driver or Passengers side

1974-1998 911/944

Check to make sure you that have all parts listed prior to installation. If anything is missing contact us immediately.

- (1) Aluminum Fire Extinguisher Mount
- (2) Aluminum Spacers
- (2) Stiffening Plates

- (6) Socket Head Cap Screws M6 X16mm - MC91290A321
- (4) Socket Head Cap Screws M6 X35mm - MC91290A334
- (6) Button Head Cap Screws 10/32 X.5 - MC92949A265
- (14) Washers M6- MC91166A250
- (12) Washers #10 - MC92141A011
- (6) Nyloc Nuts 10/32 - MC91831A411
- (6) Nyloc Nuts M6 - MC90576A115



Step 1 - Remove seat from car and position it so you can access seat bottom as shown.



Step 2 - Remove plastic motor cover. Step 3-5 describes the installation of a stiffener plate that is designed for use in high vibration environments. Its not required but recommended. If your not using the stiffener plate skip to step 6



Step 3 - Remove the (3) M6 bolts that attach the seat actuator. Only remove one side of the seat at a time.



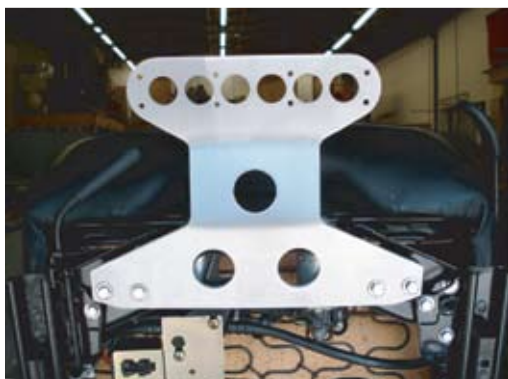
Step 4 - Insert stiffening plate between the actuator and the motor bracket. Install the supplied M6 X16mm bolts and washers as removed from step 3. Make sure that the (2) holes are aligned as shown above.



Step 5 - Repeat steps 3 & 4 on the other side of the seat. You must rotate the slider arm to access (2) of these mounting bolts.



Step 6 - Install the fire extinguisher mount using the (2) aluminum spacers and the (4) 6mm X 35mm bolts, washers and nuts as shown. This mount can be flipped to adjust fire extinguisher height.



Step 7 - This bracket has been designed to slightly bend when tightened to the seat frame.



Step 8 - Reinstall plastic motor cover.



Step 9 - Install fire extinguisher bracket using the supplied (6) button head screws, washers and nuts. This mount was designed for a standard Hal Guard bracket. If your mounting holes are different you may need to drill your bracket to properly fit. Install seat into car.