



Order Online: WWW.RENNLINE.COM

EM Sales@rennline.com

PH 802.893.7366

FX 802-893-7311

Driven to improve excellence.

Porsche Fire Extinguisher Mount - Driver or Passengers side

1996-2005 996/986

Check to make sure you that have all parts listed prior to installation. If anything is missing contact us immediately.

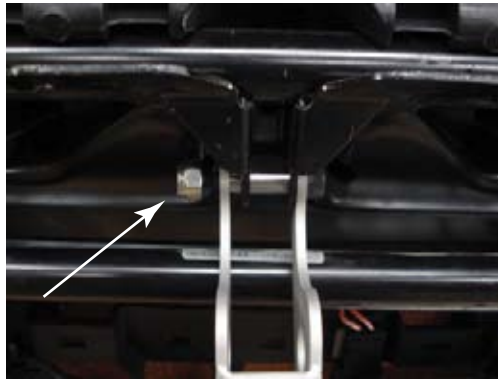
- (1) S/S Mounting Bracket
- (1) Aluminum Face Plate
- (1) 5/16" SS Shoulder Screw- MC91259A583

- (1) 1/4 20 SS Nyloc Nut - MC91831A029
- (6) 8/32 x.5 SS Button Head Screws - MC92949A194
- (8) Washers #8- MC92141A009
- (2) 8/32 SS Nyloc Nut - MC90101A009
- (6) 10/32 x.5 Button Head Screws - MC92949A265
- (12) Washers #10 - MC92141A011
- (6) Nyloc Nuts 10/32 - MC91831A411

Note: For use on factory driver or passenger side seats (due to some factory options, this unit may not work on all driver side seats with seat in the lowest position).



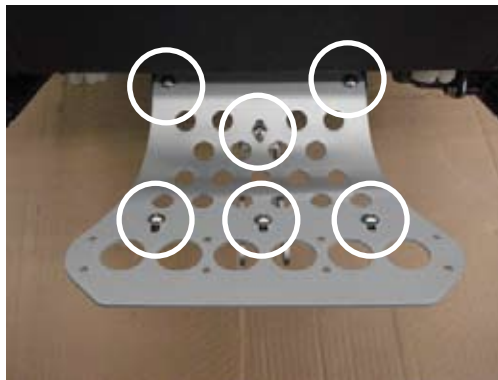
Step 1 - Remove seat from car and position it so you can access seat bottom as shown.



Step 2 - Attach the S/S bracket to the seat as shown in the photos above using the 1/4-20 shoulder bolt and nut. For cars that already have a bolt in this location, remove factory bolt and use the one supplied with this mount.



Step 3 - Attach the aluminum face plate to the seat and the S/S bracket as shown above using the supplied 8/32 button head screws, nuts and washers. Leave all hardware loose until everything is in place, and then tighten hardware.



Step 4 - Install fire extinguisher bracket using the supplied (6) 10/32 button head screws, washers and nuts. This mount was designed for a standard Hal Guard bracket. If your mounting holes are different you may need to drill your bracket to properly fit. Install seat into car.

