



Order Online: WWW.RENNLINE.COM

EM Sales@rennline.com

PH 802.893.7366

FX 802-893-7311

Driven to improve excellence.

INSTALLATION INSTRUCTIONS FOR THROTTLE LIFTER PLATE

READ BEFORE INSTALLATION

The use of any Rennline product is the sole responsibility of the end user. Rennline Inc. accepts no responsibility for warranty voids or damage resulting from the use of these products. Do to the varying location of wiring harnesses and other components, carefully inspect any area prior to drilling. All Rennline products are intended for off road use only and should be installed by a qualified automotive technician.

Check to make sure that you have all parts listed prior to installation. If anything is missing contact us immediately.

(3) #8X1/2" S/S Truss Head Screw - MC93406A194

(3) 10/32 S/S Nylon Jam Nut - MC90101A225

(3) S/S Washers - MC96659A104

(3) #8 - 3/8" S/S Truss Head Screws - MC93406A192

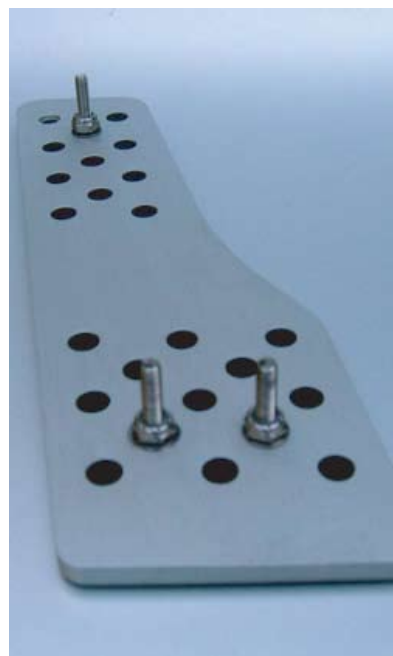
(1) Backer Plate (1) Paper Template



Cut out the supplied template and place over the top of the factory pedal in the desired position and attach with tape. Using a 1/16" drill bit, drill the (3) larger holes that are marked with an X.

Remove the paper template and ream out the (3) mounting holes using a 7/16" drill bit. NOTE: these are just clearance holes for the lifter plate nutserts and only need to be 3/8" deep.

Place lifter plate onto factory pedal making sure that it is in the desired position. Adjust the reamed holes as required to position lifter plate. Drill the required mounting holes for your model using a 1/16" bit and attach using the supplied self tapping screws.



Install the (3) S/S oval head screws, washers and nuts as shown in the photo. Do not tighten screws. NOTE: If you are installing a throttle extension, install extension plate between the pedal cover and washers.

Attach the pedal cover assembly to the lifter plate as shown. NOTE: Make sure that all screws are started prior to adjusting. Adjust pedal to desired height and angle by tightening or loosening the (3) oval head screws.

Lock pedal cover into desired position by tightening the (3) nuts on the back of the pedal cover using a 3/8" wrench. Press pedal several times to insure that there is no interference with carpet or any other objects in the pedal area.