

M73 Installation Instructions

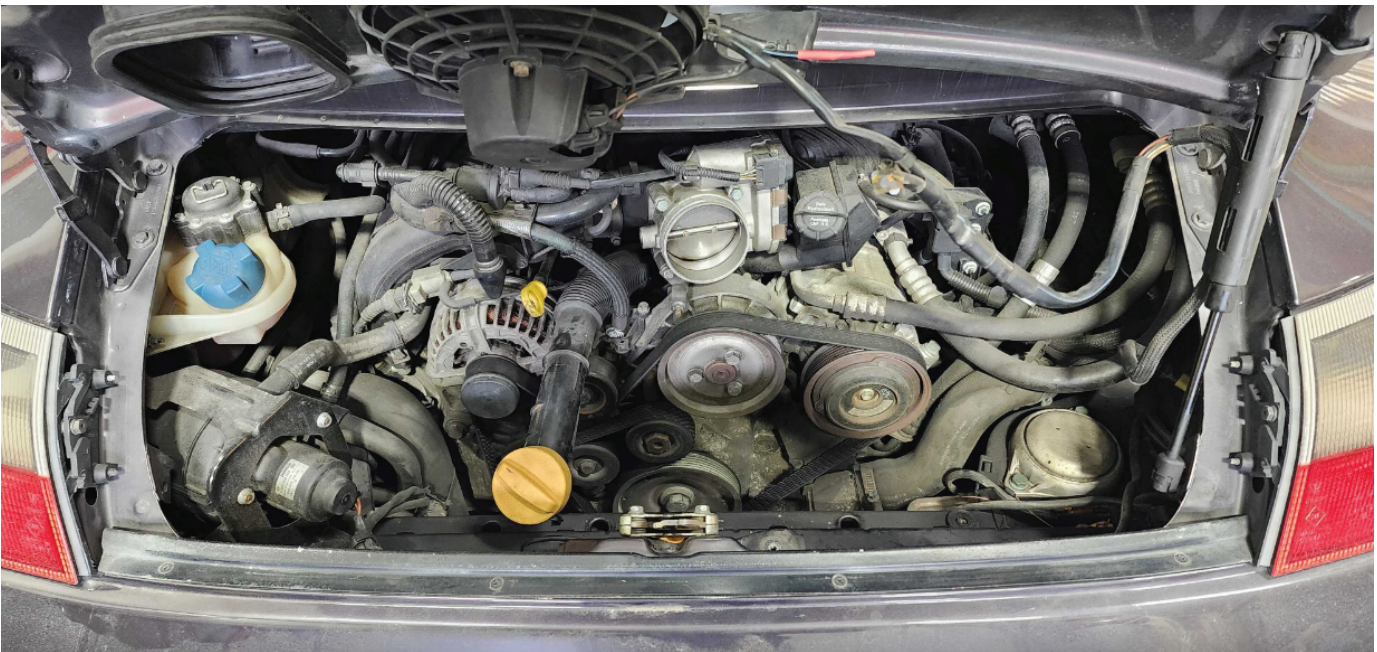


Step 1 - Remove the Intake

Remove your factory intake system by removing the clamp on the throttle body of the motor.

Remove the MAF Sensor by taking out the two screws holding it down.

Remove any brackets holding the airbox to the chassis.

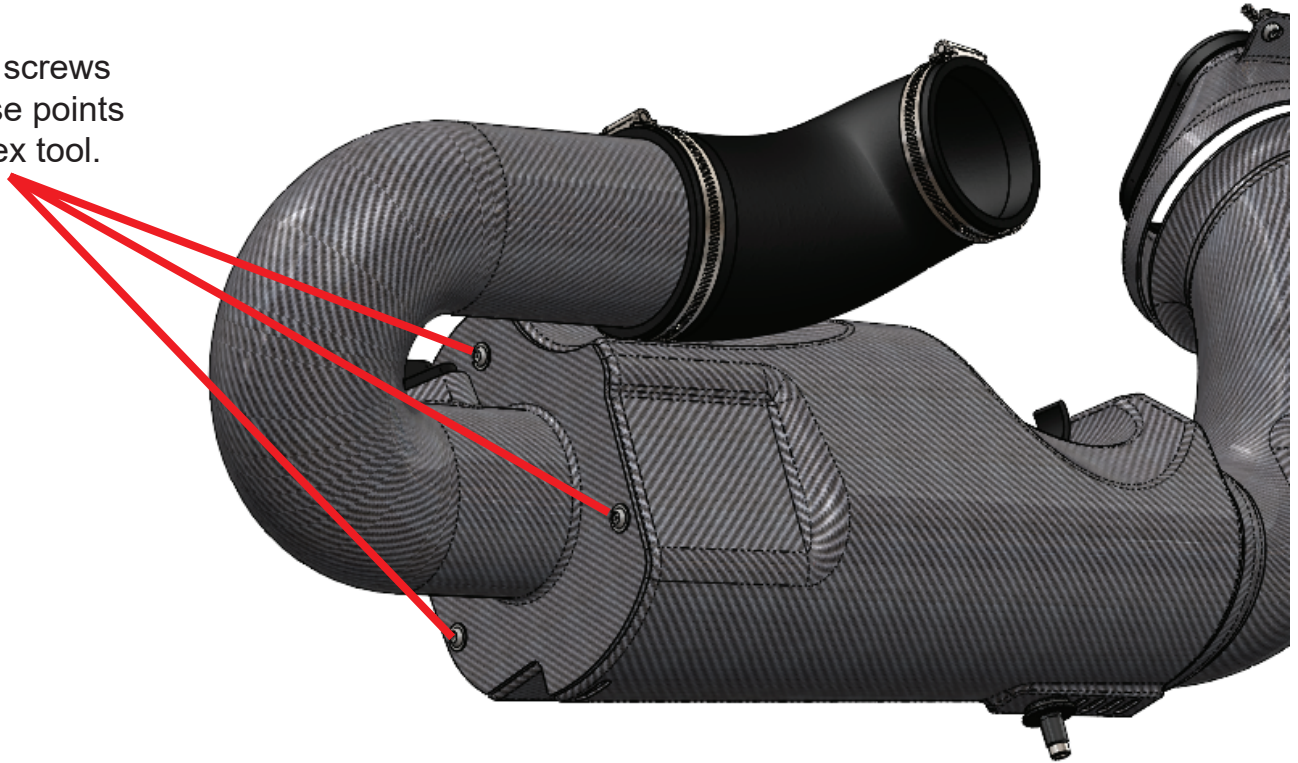


With the intake removed - install 1 of the two mounting grommets in to the second hole located in the engine bay. This is used later in the install to secure the intake.



Step 2 - Install the Intake Filter

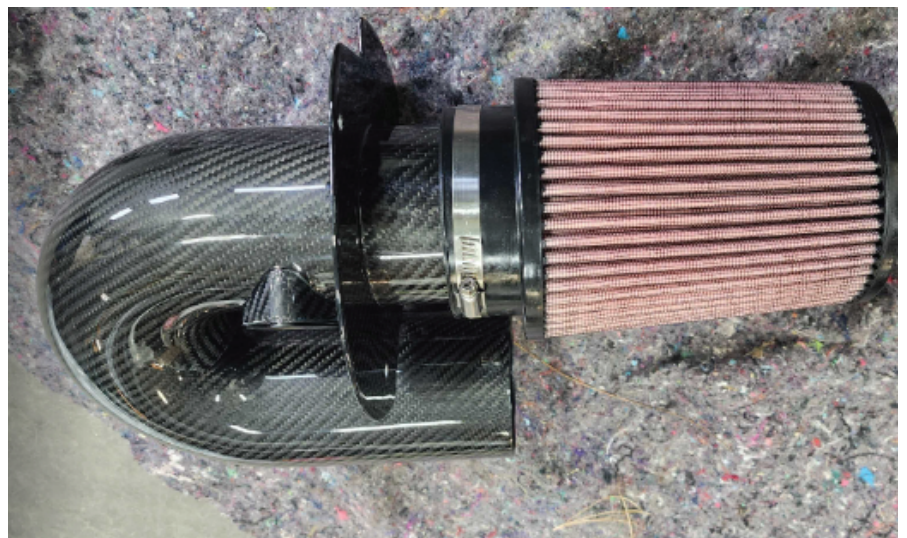
Remove the 3 screws located at these points with a 4mm Hex tool.



Install the M95 Rennline intake filter on the end of the carbon tube. There is an internal ridge that will dictate how far the filter that will slide on to the filter.

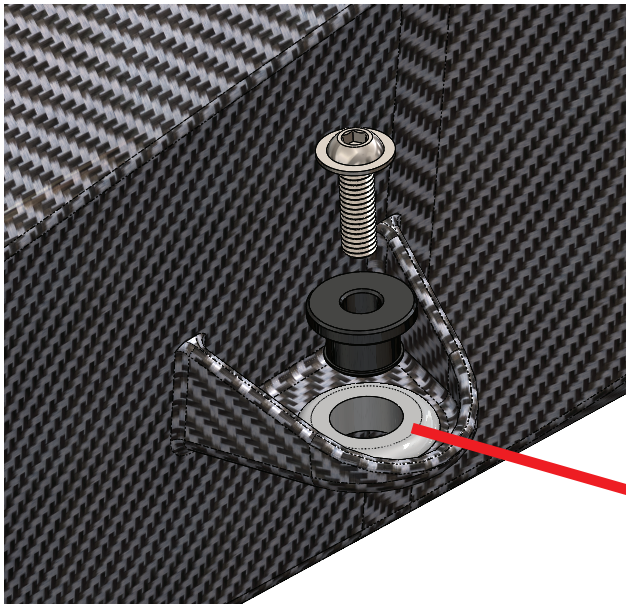
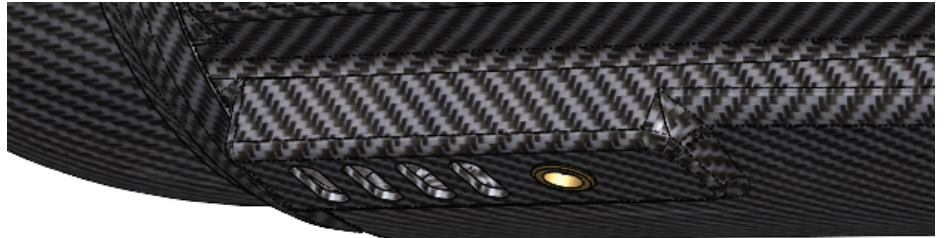
Tighten down the hose clamp.

Reinstall the carbon tube in the same orientation that you removed it from and tighten the surrounding screws. Install all 3 screws and tighten evenly.



Step 3 - Install the Brackets

This bracket is used to locate the home location of the intake. There is a corresponding hole on the body of the car that this fits in to. We will be installing a rubber grommet to the car to locate this bracket. Use the provided M6 x 35mm and bracket to install into the rivet below.



Install Rubber Grommet 9600K22 into the forward flange of the intake. A light oil or grease can ease this installation.

After the grommet - install the smaller machined part into the grommet location.

The corresponding screw (M6 x 20mm) shown is the screw used to fasten to the chassis.

Step 4 - Install the Hose

In preparation to install the intake box - Install the hose on to the intake box while having the outlet pointed roughly in the direction shown.

Apply a light lubricant on the inside of the silicone hose. This is to allow the hose to rotate on the tube for an easier adjustment.

The hose should slide over the carbon tubing roughly 25mm / 1".

Do not tighten the hose clamps as they may need to shift for the final fit up.



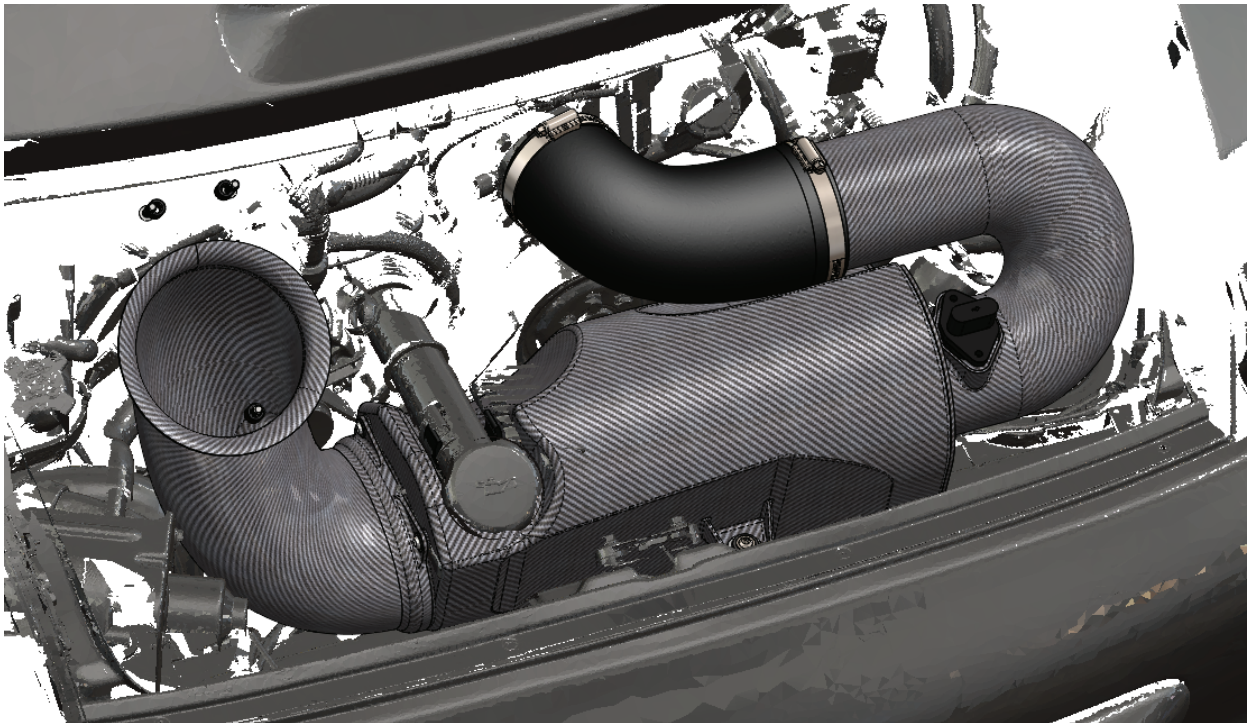
Step 5 - Install the intake in place

Lift up the oil feed neck and carefully place the intake in to position.

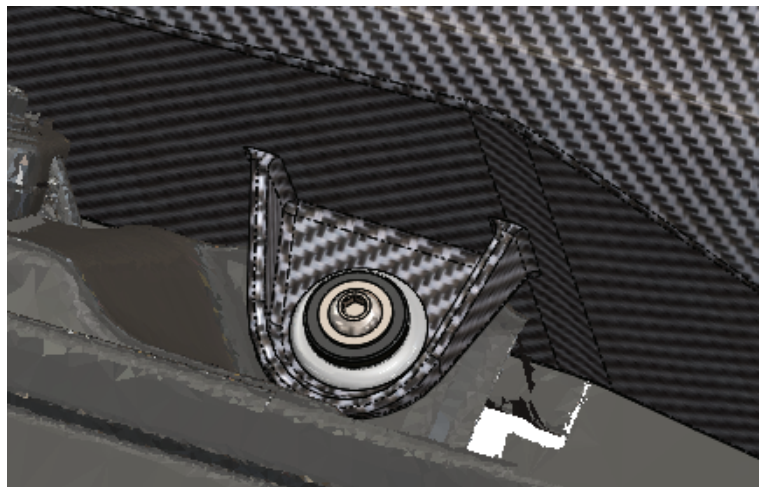
The three parts that dictate the final location of the intake are -

1. The throttle body location
2. The bottom post
3. The forward screw location

Fit the hose securely onto the throttle body and roll the hose onto the tubing to match the other two locations.



Install the provided M6 x 20mm screw onto the front flange location.



Step 5 - Install the MAF Sensor

Install the MAF Sensor with the two provided M5 x 15mm screws as shown. Orientate in the direction shown.

It is advised to tighten each screw evenly by alternating the screw being tightened. This will provide the best seal of the gasket.

Rest the oil fill neck properly into the natural location.



Step 6 – Adjustments and Fine Tuning

For a final adjustment of the intake before you tighten all components down double check that the intake is sitting properly in the car.

Behind the ram air section of the intake there is a tight clearance between the back of the tubing and the alternator of the car.

To ensure that there is no interference between this intake rotate the silicone tube to dictate the pitch of the housing. With the clamps and front screw loosened the lubricated silicone tube will rotate with ease and the intake will change its position. With proper rotation there will be ample clearance. The main interference location to watch out for is the space behind the ram tube and the pulley behind the intake.

When properly adjusted the forward screw can be tightened to lock the assembly together and all hose clamps tightened securely.

Step 7 - Install the Air Duct

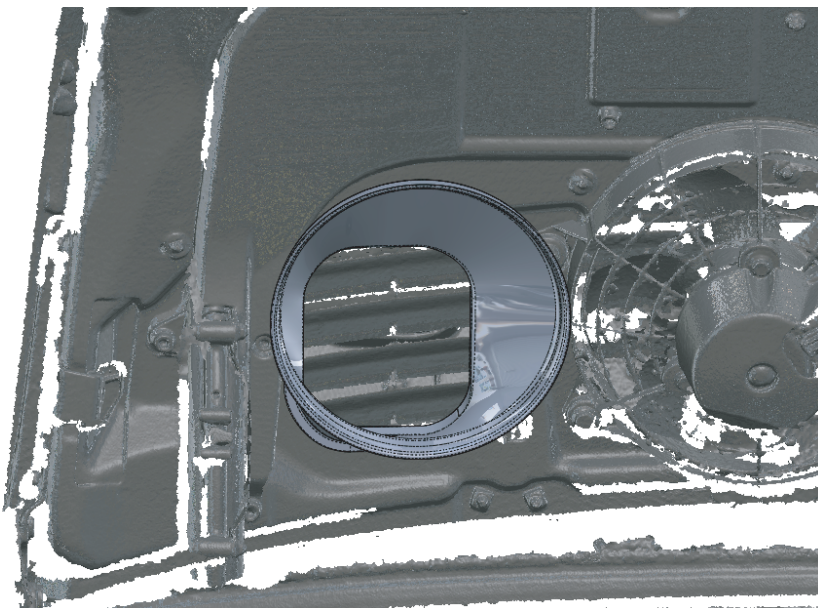
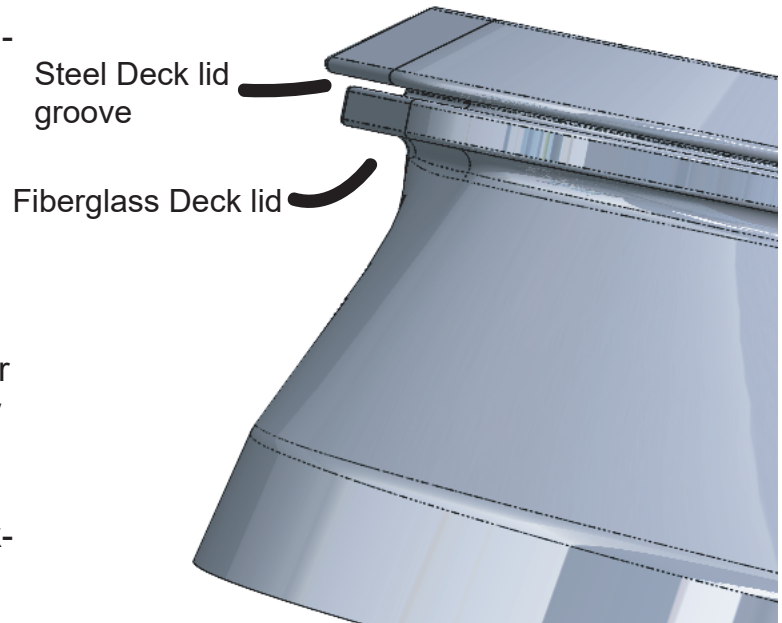
If you haven't already - remove the factory duct from your deck lid.

Installation of this duct is straight forward - orientate the duct as shown below and work the flange end through the opening. If you have a factory steel deck lid the flange will fit perfectly between the groove. The fit is tight and may require some forming to get perfect.

If you have a fiberglass deck lid the material is much thicker on the deck lid. Depending on your fiberglass deck lid the groove on the flange may not fit.

If you have a factory aero kit car the inside deck-lid sits few inches closer to the intake.

If this is the case press the flange further in past the internal groove and the second lip. The deck lid will grab the neck of the flange and still work perfect.



Step 7 - Additional Installed Photos

When fully secured the flange will direct fresh air directly in to the intake and keep hot engine bay air out.



Fits in groove of flange

