



Order Online: [WWW.RENNLINE.COM](http://WWW.RENNLINE.COM)

EM Sales@rennline.com

PH 802.655.5311

FX 802-655-6283

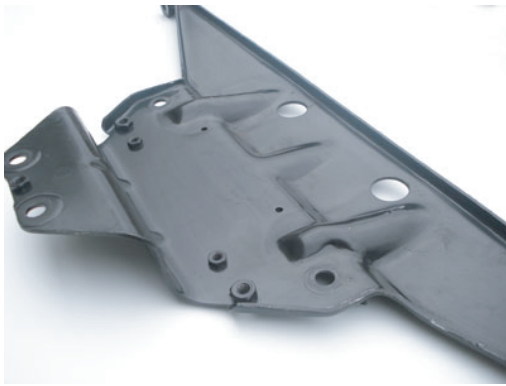
Driven to improve excellence.

## Engine Mount Reinforcement Gusset Kit

1989-98 964/993

### READ BEFORE INSTALLATION

The use of any Rennline product is the sole responsibility of the end user. Rennline Inc. accepts no responsibility for warranty voids or damage resulting from the use of these products. Do to the varying location of wiring harnesses and other components, carefully inspect any area prior to drilling. All Rennline products are intended for off road use and should be installed by a qualified automotive technician.



Step 1 - Remove engine mount from engine and thoroughly clean using a degreaser.



Step 2 - Place gusset over factory mount. Make sure that it fits evenly over entire unit and make adjustments as needed. Prep all weld areas with a sandblaster or grinder to remove paint. Try not to remove paint between the gusset and factory mount as this will be difficult to paint once assembly is welded together.



Step 3 - Clamp gusset to engine mount, use a hammer to close up any gaps that will make welding difficult.



Step 4 - Tack weld entire unit together before doing final weld.



Step 5 - Once unit is all together, execute final welds to all seams that make contact with the factory mount. We stitch weld our long seams (see step 4 photo). Feel free to do complete welds if desired.



Step 6 - After welding is complete, sandblast entire unit taking extra caution not to remove paint between gusset and factory mount. Grind any welds or imperfections



Step 7 - Prime and paint. We use the same satin black that the factory used.



Step 8 - Reinstall mount. Note: When installing on a 993 car that has the coils mounted to the engine brace, mount coils prior to bolting assembly to engine.