



Order Online: [WWW.RENNLINE.COM](http://WWW.RENNLINE.COM)

EM Sales@rennline.com

PH 802.655.5311

FX 802-655-6283

Driven to improve excellence.

### READ BEFORE INSTALLATION

The use of any Rennline product is the sole responsibility of the end user. Rennline Inc. accepts no responsibility for warranty voids or damage resulting from the use of these products. Do to the varying location of wiring harnesses and other components, carefully inspect any area prior to drilling. All Rennline products are intended for off road use only and should be installed by a qualified automotive technician.

Check to make sure that you have all parts listed prior to installation. If anything is missing contact us immediately.

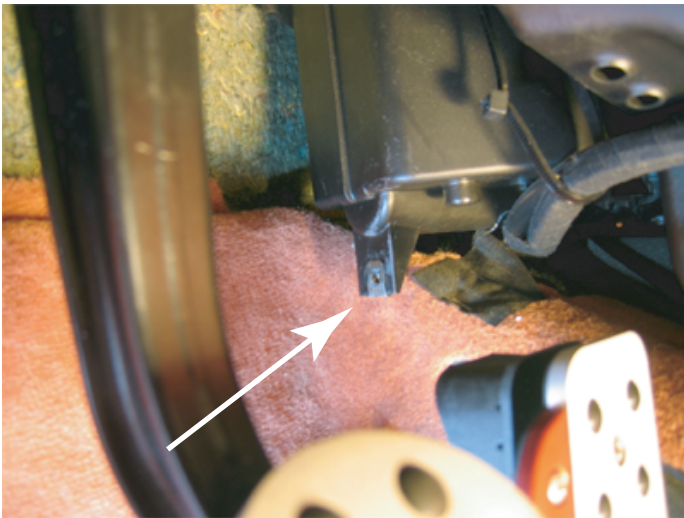
(2) #8x5/8" Black S/S Truss Screw - MC93406A196

(1) Speed Nut - MC97551K118

(1) Floor Board with (2) Rubber bumpers mounted - MC9723K85

### INSTALLATION INSTRUCTIONS FOR ALUMINUM FLOOR BOARD

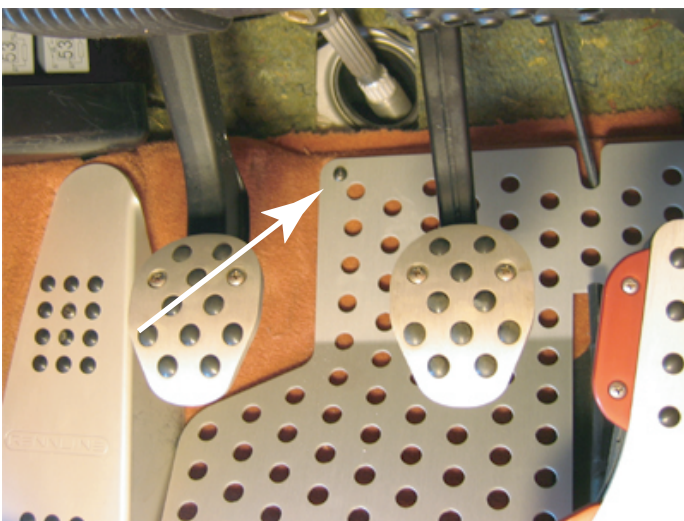
Fits 1996- Porsche 986/996/987/997/CAYMAN (Drivers Side)



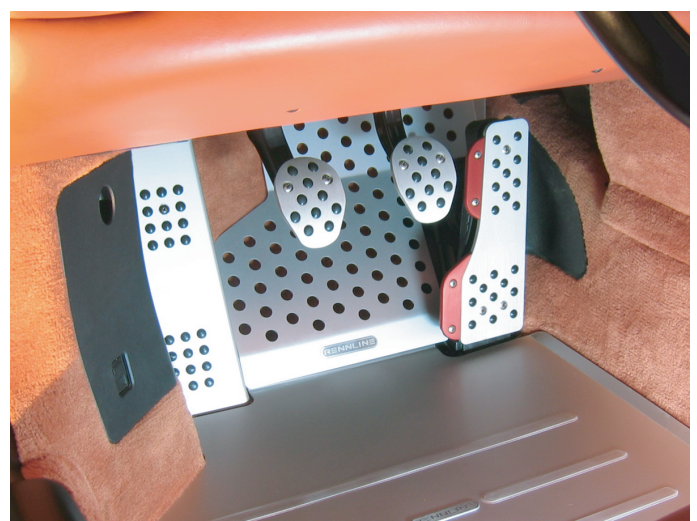
Locate mounting tab on the bottom left corner of the fresh air housing. Insert the supplied speed nut on to tab.



Place floorboard into position and attach to speed nut using supplied sheet metal screw.



Position floorboard so that the bottom edge is parallel to the floor. Using a 1/8" drill bit, drill a hole through the carpet and into the chassis of the car. Attach floorboard using the supplied sheet metal screw.



To install floor mat or Track Mat. Simply lift bottom of floorboard and slide mat underneath, press floorboard firmly against mat. Enjoy your new Rennline product.