

REV 3 - Adjustable Gas Pedal System

986/996

READ BEFORE INSTALLATION

The use of any Rennline product is the sole responsibility of the end user. Rennline Inc. accepts no responsibility for warranty voids or damage resulting from the use of these products. Due to the varying location of wiring harnesses and other components, carefully inspect any area prior to drilling. All Rennline products are intended for off road use and should be installed by a qualified automotive technician.

Check to make sure you have all parts listed prior to installation. If anything is missing contact us immediately.

- (1) Base Plate
- (2) Lifter Pads
- (1) Small Lifter Pad
- (1) Upper Pedal Cover
- (1) Lower Pedal Cover
- (1) Upper Pedal Extension
- (1) Lower Pedal Extension
- (1) Pedal housing
- (2) Bushings - MC2938T2
- (1) Hinge Bracket
- (1) Hinge Shaft 2.5"
- (2) 10/32 X.5" S/S Locking Cap Screws MC93705A264
- (2) #10 S/S Washers - MC92141A011
- (2) Plastic Bushing .3125" MC95649A236
- (1) Wave Disc Spring MC9714k28

INSPECTED

- (1) Linkage Shaft
- (1) Rod end 5mm - FK-CF5M
- (1) S/S Jam Nut - M5 - MC90710A037
- (4) Black S/S Button Head Cap Screw 10/32 X.325" - MC97763A231
- (5) S/S Cap Screw 10/32 X 1" - MC92196A274
- (6) #10 S/S Washer - MC92141A011
- (3) S/S Cap Screw 1/4-28" x .75" - MC92196A321
- (2) J Nut - MC90679A032
- (2) S/S Flat Head Cap Screw 1/4-20 x 5/8" - MC 93791A552
- (1) S/S Cap Screw M6 x 22 - MC91292A073
- (1) S/S Set Screw 1/4-20" x .5" - MC90251A537
- (1) S/S Cap Screw M5X60 - MC91292A197
- (1) S/S Nyloc Nut 10/32 - MC91831A411

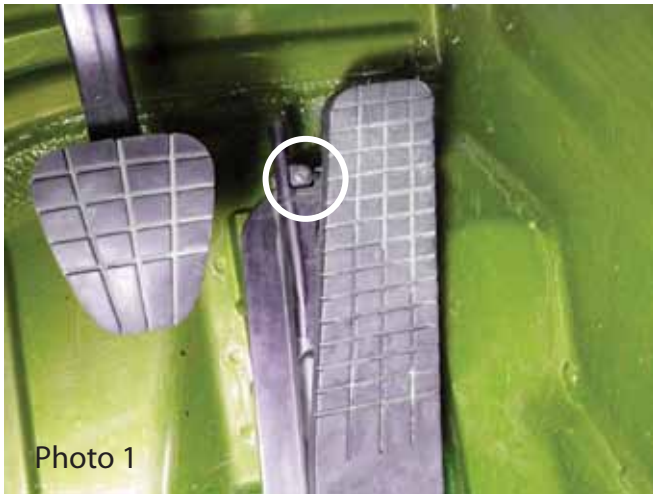


Photo 1



Photo 2

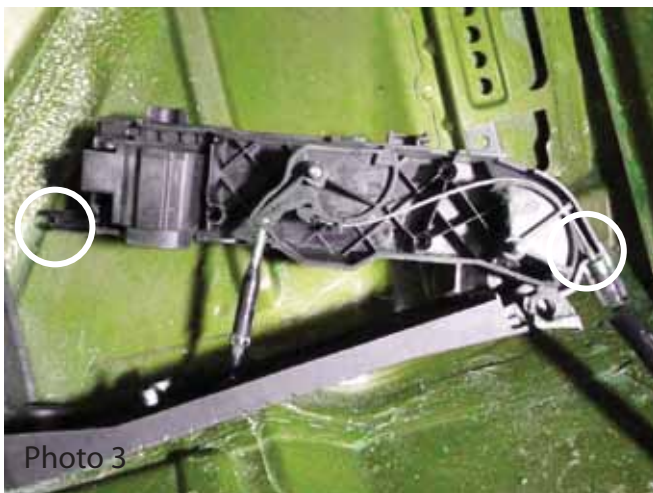


Photo 3

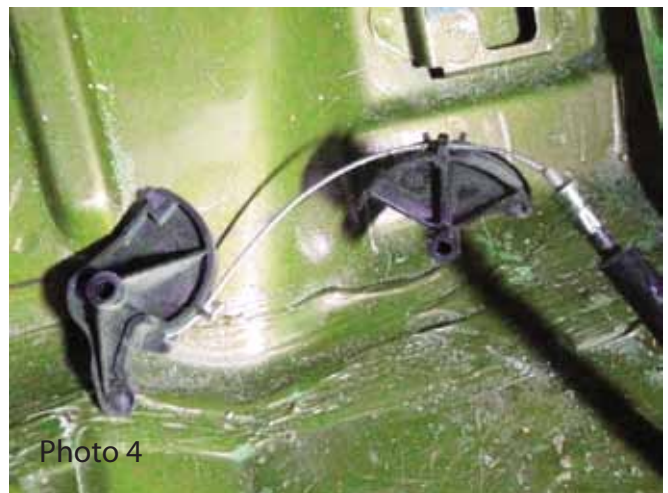


Photo 4

1. Remove the screw at the top left corner of the pedal body (photo1). Slide the pedal assembly up 1/2" and pull toward the seat. Rotate the pedal assembly so that you have access to the right hand side.
2. Remove the 4 screws holding the pedal body together. (photo 2)
3. Release the tabs at the top and bottom of the pedal body and remove the right half (the half facing you). (photo 3)
4. Remove the cables and cable cams leaving the cables attached to the cams. (photo 4) Note: depending on your car's year and options you may have 1 or 2 cables. Take note as to how your cables are attached to the cams and housing for re-assembly. A quick photo is always helpful.
5. Bring the rest of the assembly to a work bench.

Next page.



6. Separate the pedal assembly into 3 pieces, left, right and pedal pad. (Photo 5) Note: Pedal pad and factory linkage will no longer be used.
 7. Using a cut off wheel or equivalent (jigsaw, hack saw blade, band saw) Remove the right side plastic flange from the right half of the pedal body. (photo 6 & 7) Sand the cut edge smooth (Photo 6)

Next Page.

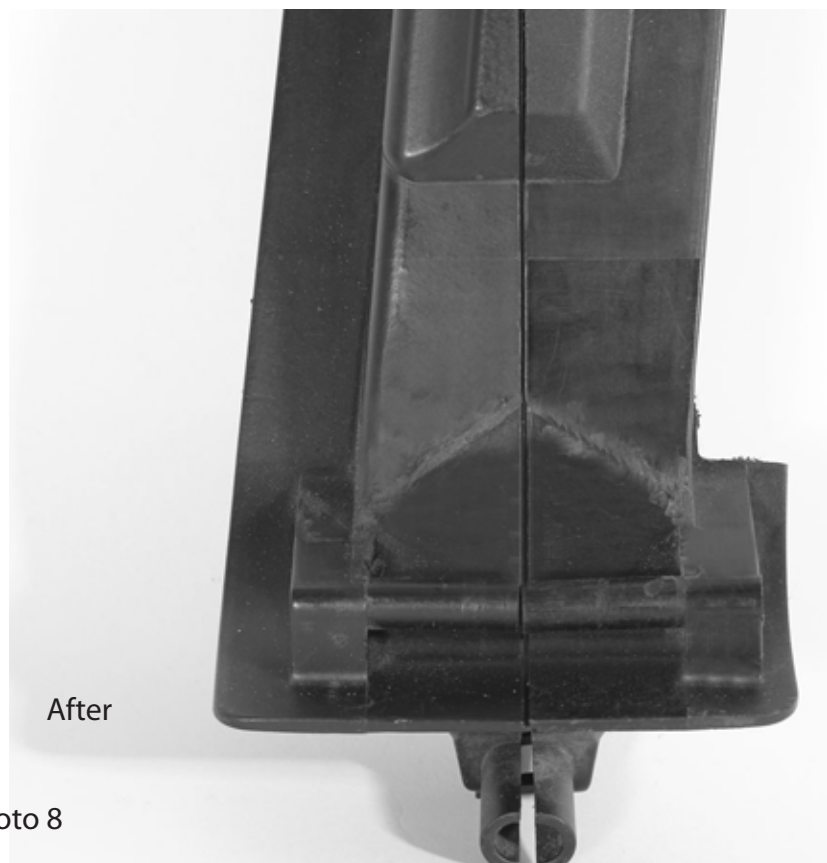
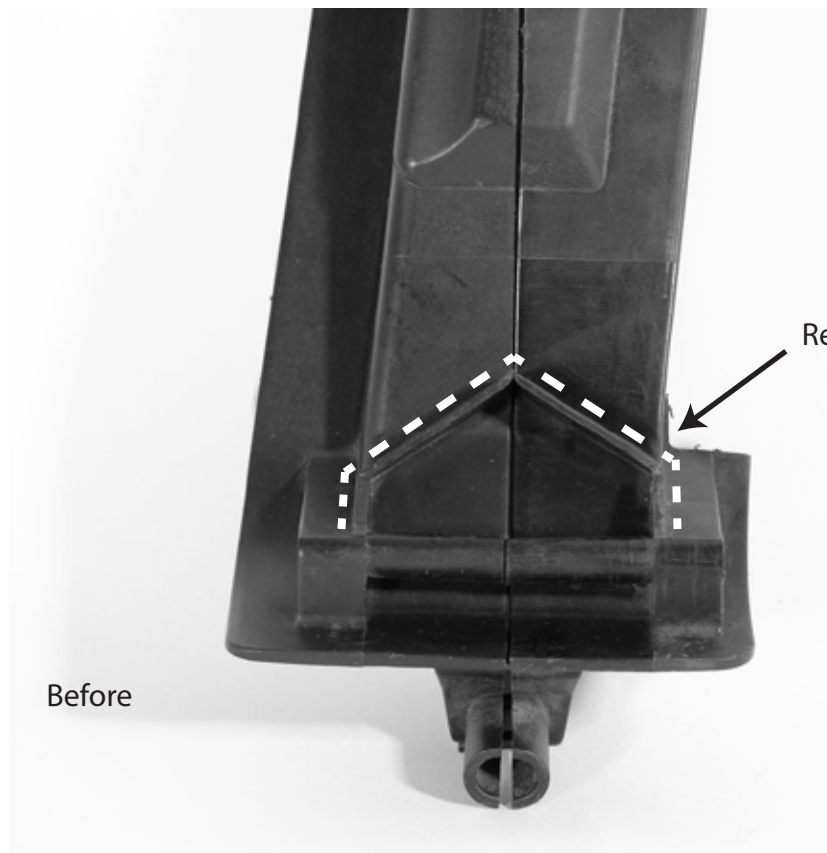


Photo 8

8. Using a cut off wheel or equivalent (jigsaw, hack saw blade, band saw) Remove the "House" shaped extrusion shown in Photo 8.

Next Page.

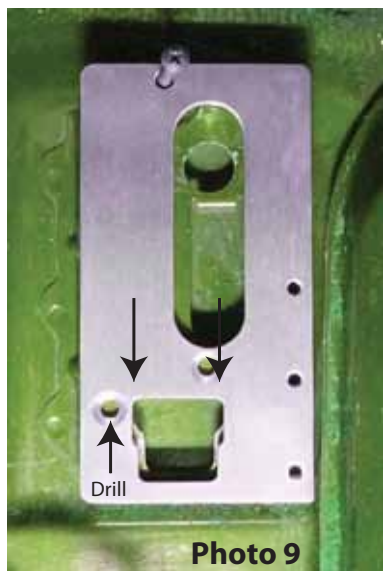


Photo 9



Photo 10



Photo 11



Photo 12

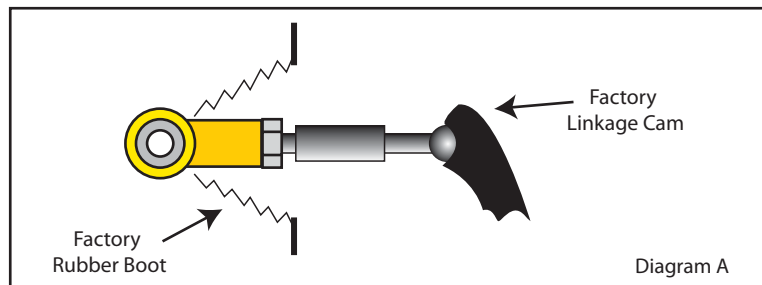


Diagram A

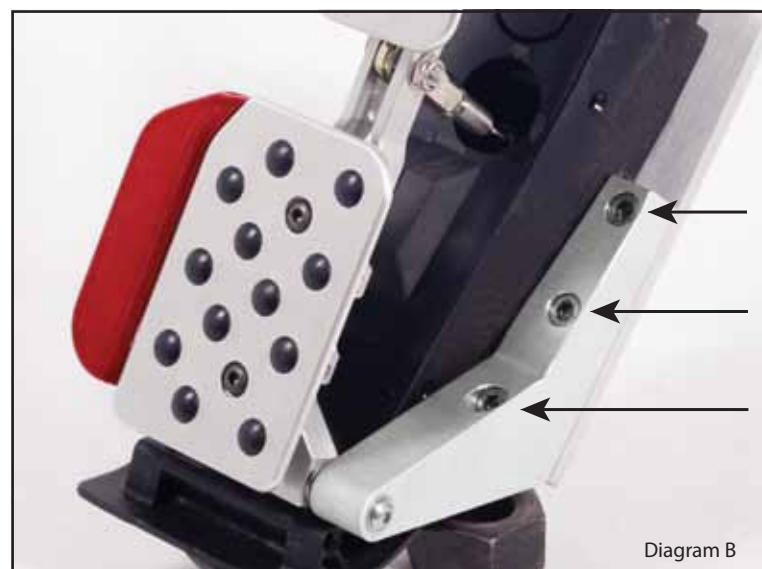


Diagram B

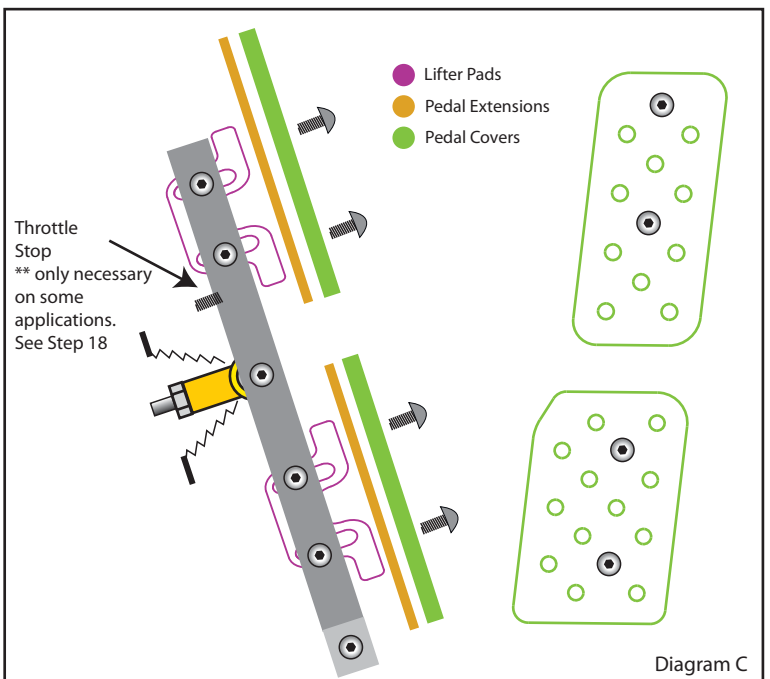


Diagram C

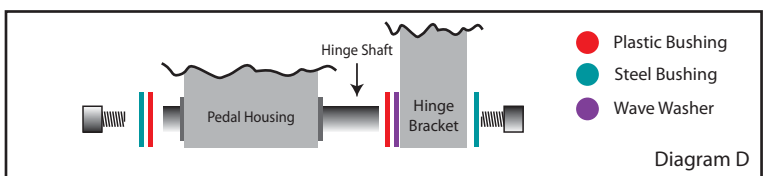


Diagram D

9. Using the the screw that you removed in step 1, attach the aluminum base plate to the car. Align the T slot in the plate with the T slot in the floor. Mark the hole locations to the left of the T-Slot and above the T-slot, and drill using a 1/4" drill bit. (photo 10)
10. Remove the base plate and install the supplied J nuts over the drilled holes. (photo 11)
11. Re-install the aluminum base plate using the supplied flat head cap screws into the J nuts. (photo 12)
12. Starting at Step 5 and working in reverse order to Step 2, re-assemble the factory pedal body minus the factory pedal pad and linkage. Note: Install the supplied linkage as shown in diagram A. Leave the linkage nut loose for final adjustment once the entire unit has been installed.
13. Slide the pedal body into the T slot on the installed aluminum base plate and secure using the supplied M5 x 60 cap screw (Photo 13)
14. Attach the aluminum hinge bracket to the base plate using the supplied (3) 1/4-28 cap screws. (Diagram B) Note: The photo shows this out of the car just for an easier view, you will be installing yours in the car.
15. Slide the aluminum pedal housing onto the hinge shaft. See diagram D for hardware configuration.
16. Install Lifter Pads, Pedal Extensions(if desired) and Pedal Covers as shown in diagram C using the supplied (4) 10-32 x 1" cap screws and washers and (4) 10-32 x .325" black button head screws. See Step 18 for information on adjustments and which lifter pads to use.
17. Adjust the pedal covers as desired and tighten the (4) cap screws you installed in step 13.
18. Attach the pedal linkage using the supplied 10/32 X1" Cap Screw, washers and nut. Adjust linkage to the desired length and tighten the lock nut. Pull the bellows up over the rod end as shown in Diagram A and if necessary set the throttle stop to make contact with the plastic body at full throttle .
19. Adjust pedal to your ideal positioning for heel toe. Depending on the height of your brake pedal (largely affected by the brake setup on the car) It may be necessary to adjust the height of your throttle pedal. This can be done in up to 3 ways. Adjustment of the throttle linkage, use of the adjustable upper lifter pad, or by using the small non-adjustable upper lifter pad. After making adjustments, ensure that either the throttle stop or pedal upright is limiting pedal travel when fully depressed, and not the throttle cable. Adjust the throttle stop as needed.
20. Press the pedal several times to make sure that everything works smoothly. Check all hardware and components to ensure that everything is tight and assembled as described in these instructions. If something does not seem correct, contact us immediately prior to driving the car.
21. Like all critical components on your car, thoroughly inspect this pedal for proper operation prior to all track or driving events.
22. Enjoy your new Rennline product.