

EXPLODED VIEW

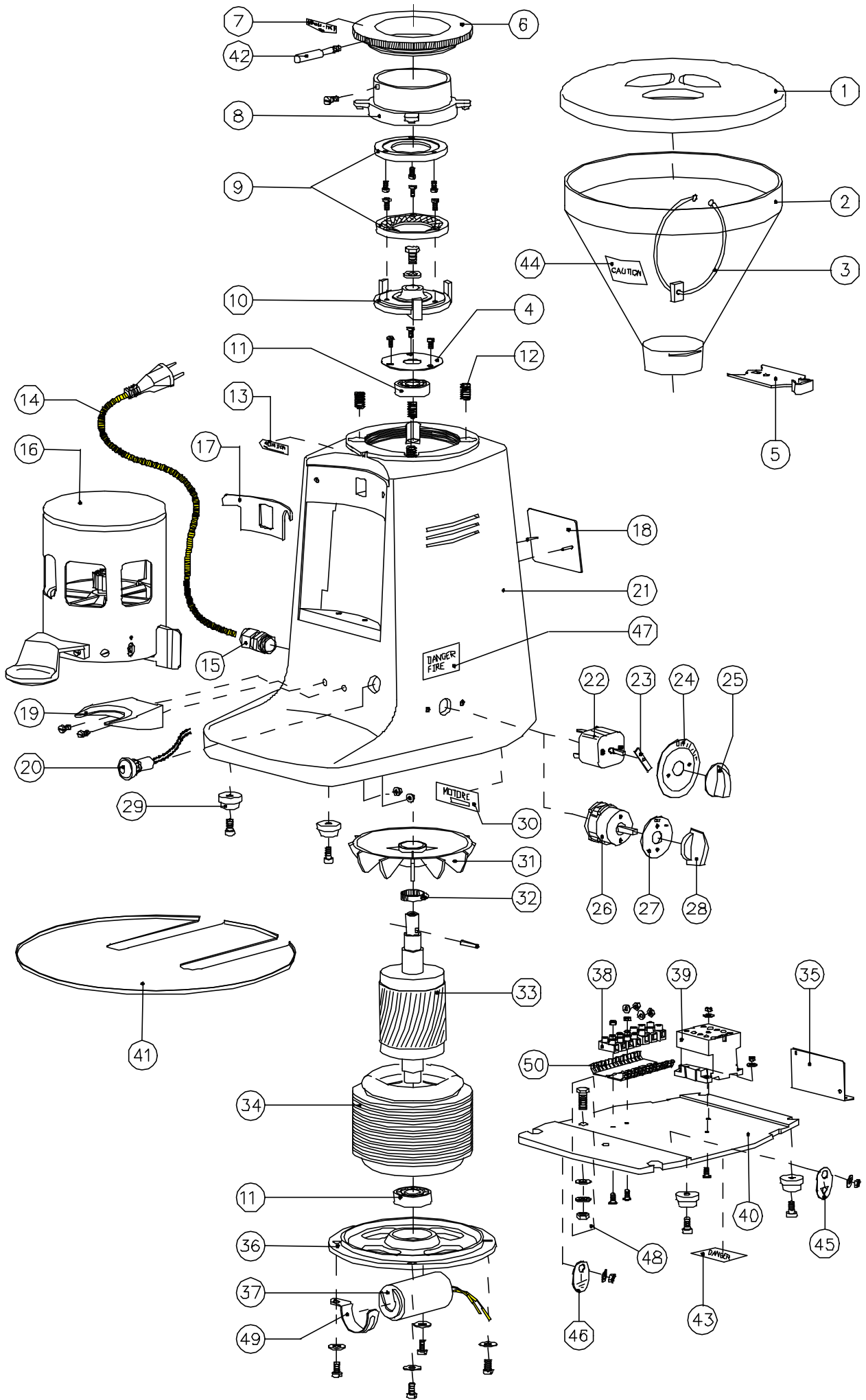
GRINDER DOSER MAJOR

ESMJDOS01 06/2003



MAZZER LUIGI s.r.l.
VIA MOGLIANESE, 113
30037 GARDIGIANO DI SCORZE' (VE)
ITALIA
TEL. +39 041 5830200 r.a. - FAX +39 041 5830060
E-mail: mazzler@mazzler.com - <http://www.mazzler.com>

NO.	DESCRIPTION	CODE	Q.	NOTES
1	Hopper cover	S000COD01	1	
2	Hopper	S000CAE02	1	
3	Magnet with ring	S00SCAC01	-	Optional
4	Major cover bearing	SMIOSEB01	1	
5	Hopper locking slide	SMIOSEB01	1	
6	Coffee grinding adjustment disk	SMJ0GHA04	1	
7	Label: Coarse - fine / Adjustment initial position	S000ETA03	1	
8	Upper grinding blade holder	SMJ0POA06 A	1	
9a	Grinding blade set (ref. 151D)	FMA00151D	1	
9b	Grinding blade set (rif. 151DM Dr. - DT Dos.)	FMA00151M	1	
10	Lower grinding blade holder	SMJ0POA07	1	
11	Bearing 6204 2RS	S000CUA04	2	
12	Grinding adjustment spring	SSJ0MOB01 A	4	
13	Label: Motor rotation	S000ETA00	1	
14a	Electric cable - "Italy" single phase	S000CAD01	1	
14b	Electric cable - three phase 220-230V	S000CAD09	1	
14c	Electric cable - three phase 380-400V	S000CAD03	1	
14d	Electric cable - "Europe"	S000CAD04	1	
14e	Electric cable - "USA"	S000CAD05	1	
14f	Electric cable - "Australia"	S000CAD07	1	
14g	Electric cable - "Great Britain"	S000CAD08	1	
14h	Electric cable - "Israel"	S000CAD10	1	
14i	Electric cable - "Svitzerland"	S000CAD06	1	
15	Cable locking	S000PAB03	1	
16a	Manual doser	SMJSGRA02	1	Manual-timer versions
16b	Automatic doser	SMJSGRA04	1	Automatic versions
17	Gasket	S000GUA01	1	
18	"Mazze 4M" plate	S000TAA02	1	
19	Fork for filterholder rest	S000FOB02 A	1	
20a	Pilot light 230-400V - green	S000LAA06	1	Single phase 220-240V/50Hz vers. Three phase 230-400V/50Hz vers.
20b	Pilot light 110V - red	S000LAA01	1	110V/60Hz version
20c	Pilot light 110V - UL - red	S000LAA07	1	110V/60Hz ETL version
21	Body	SMJ0CAA04	1	
22a	Two pole time switch	S000TIA02	1	Timer single phase versions
22b	Three pole time switch	S000TIA03	1	Timer three phase versions
23	Time switch stop	S000FEA01	1	Timer versions
24	Time switch plate	S000TAA03	1	Timer versions
25	Time switch knob	S000MAB01	1	Timer versions
26a	Three pole rotative switch	S000INA04 A	1	Manual three phase versions
26b	Two pole rotative switch with auxiliary phase	S000INA13	1	Automatic single phase vers.
26c	Three pole rotative switch with auxiliary phase	S000INA10 A	1	Automatic three phase vers.
26d	Two pole rotative switch	S000INA09	1	Manual single phase versions
27a	Switch plate (O / I)	-	1	Manual versions
27b	Switch plate (O / I / START)	-	1	Automatic versions
28	Rotative switch knob	-	1	
29	Support legs	S00SPIA01 A	4	
30a	Label motor: MJ 220-240V/50Hz	SMJ0ETA01	1	
30b	Label motor: MJ 230-400V/50Hz	SMJ0ETA03	1	
31	Cooling fan	SMJ0VEA01	1	
32	Fan fixing clamp	S000FAA01	1	
33	Rotor	SMJ0ROA02	1	
34a	Coiled stator-single phase 220-240V/50Hz	SMJSPAE01	1	Single phase 220-240V/50Hz vers.
34b	Coiled stator-three phase 230-400V/50Hz	SMJSPAE03	1	Three phase 230-400V/50Hz vers.
34c	Coiled stator-single phase 110V/60Hz	SMJSPAA08	1	Single phase 110V/60Hz vers.
34d	Coiled stator-single phase 220V/60Hz	SMJSPAS01	1	Single phase 220V/60Hz vers.
34e	Coiled stator-three phase 220V/60Hz	SMJSPAS03	1	Three phase 220V/60Hz vers.
35	Support plate for contactor BF 16.10	S000PIA05	1	Automatic 110V/60Hz/1ph. vers.
36	Motor cap	SMJ0CAB03	1	
37a	Capacitor 16 uF	S000COE03	1	Automatic 220-240V/50Hz/1ph. vers. Automatic 220V/60Hz/1ph. vers.
37b	Capacitor 60 uF	S000COE07	1	Single phase 110V/60Hz vers.
37c	Capacitor 60 uF - UL	S000COE09	1	Single phase 110V/60Hz ETL vers.
38	Terminal blocks	P000MOA04	-	
39a	Contactor 230V/50Hz	S000COC02	1	Automatic 220-230V/50Hz/1ph. vers. Three phase 220-230V/50Hz vers.
39b	Contactor 240V/50Hz	S000COC06	1	Automatic 240V/50Hz/1ph. vers.
39c	Contactor 380V/50Hz	S000COC08	1	Three phase 380-400V/50Hz vers.
39d	Contactor 110V/60Hz (BF 16)	S000COC10	1	Automatic 110V/60Hz/1ph. vers.
40	Bottom plate	SMJ0PIC02	1	
41	Drip tray	SMJ0PIB02	-	Optional
42	Grinding adjustment disk handle	SSJSPEA04	1	
43	Label: "Danger"	S000ETA14	1	110V/60Hz versions
44	Label: "Caution - Hopper"	S000ETA15	1	110V/60Hz versions
45	"Ground" plate	S000TAA18	1	
46	"External unipotential clamp" plate	S000TAA19	1	CE versions
47	Label: "Caution Fire"	S000ETA20	1	110V/60Hz versions
48	External unipotential clamp	-	1	CE versions
49	Capacitor locking clamp D.40	S000GRB05	1	
50	Under terminal board	P000SOT02	-	



No.	DESCRIPTION	CODE	Q.	NOTES
1	Doser cover	S000COD02	1	
2	Cylinder for doser	S000CIA01	1	
3	Dose adjustment knob	S000MAB02	1	
4	Upper dosing star	SMJS0STA04	1	
5	Coffee outlet covering section plate	S000SEA01	1	
6	Female dosing star	S000STA03	1	
7	Dosing system pressing spring	S000MOB05	1	
8	Male dosing star	S000STA02	1	
9a	Upper microswitch	S00SMIA01	1	Automatic version
9b	Upper microswitch - UL	S00SMIA02	1	110V/60Hz automatic version
10	Doser pipe	SMJ0TUA04	1	
11a	Coffee pressing device D.53	S000PRA02 D	1	
11b	Coffee pressing device D.54,5	S000PRA02	1	
11c	Coffee pressing device D.57,5	S000PRA02 E	1	
12	Corrugated ring D.32mm	S000ANA01	1	
13	Ratchet	S000CRA01	1	
14	Doser adjustment screw - M8x70	S000VIA01	1	
15	Lower microswitch spring	S000MOB06	1	Automatic version
16	Lower microswitch star	S000STA05	1	Automatic version
17	Lower microswitch	S00SMIA04	1	Automatic version
18	Counter	S00SCOB01	1	
19	Dosing lever return spring	S000MOB03 A	1	
20	Nose	S000NAA01 A	1	
21	Doser bottom	S000FOA01	1	
22	Nose spring	S000MOB04	1	
23	Dosing lever	S00SLEA02	1	
24	Doser bottom set	S00SFOA01	1	
25	Coffee outlet guard	S000PRB01	1	Manual-timer vers.
26	Bush coffee outlet guard	S000BOC03	2	Manual-timer vers.
27	Doser washer D.50 thick. 0,4	S000ROA02	1	
28	Lower microswitch star space	S000DIA01	1	
29	Label "Danger"	S000ETA14	1	110V/60Hz automatic version
30	Oversized female dosing star	S000STA06	1	
31	Oversized female dosing star + dose adjustment knob	S000MAB03	1	
32	Oversized star with dosing knob	S00SGRA08	1	

