

UMAMI P ROPE GENOVA ARMCHAIR

SKU:ACMOTO-402-UMAMI P ROPE GENOVA



Description:

Solid European beech frame in a natural or stained finish.

Handwoven rope backrest.

Seat upholstered in your selected material (COM).

Suitable for indoor use only.

Materials:






Beech frame

Rope backrest in 2 styles.

Fabric, leather or COM.

Dimensions: (cm/inch)

W 59 D 60 H 83 SH 48 AH 70 cm
 W 23.25" D 23.5" H 32.75" SH 19" AH 27.5"

83	48	60	59	70
				
32 ³ / ₄	19	23 ¹ / ₂	23 ³ / ₄	27 ¹ / ₂

WOOD FINISHES

STANDARD WOOD BEECH



UMAMI-ROPES-TRIESTE



CALIENTE ABITEX

CAT. A



802

customs code
54079300

features
52% polypropylene, 48% polyester

width
cm ± 140

weight
± 210 g/m²

dyeing
solution dyed product

roll length
approx. 35 lm.

abrasion resistance
40.000 rubs, ISO 12947-2

color fastness to light
4/5, ISO 105 B02

fastness to rubbing
dry 4/5, wet 4, ISO 105 X12

seam slippage
warp 2 mm, weft 2 mm, ISO 13936-2

pilling
4/5, ISO 12945-2

fire resistance
IIM - UNI 9175
EN 1021:14 part 1/2
BS 5852:79 part 1, is 1 (with treatment, min. 200 lm)
California TB 117:2013
IMO MED - Ftp 307 part 8
IMO MED - Ftp 307 part 7

attention
slight colour differences between different batches are allowed



A soft feel - this is the distinctive trait of Caliente; a polypropylene chain interwoven with a polyester chenille. It has a denim shot effect and a delicate, warm look in 26 different colours.



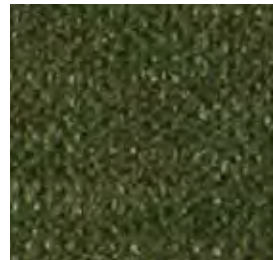
100



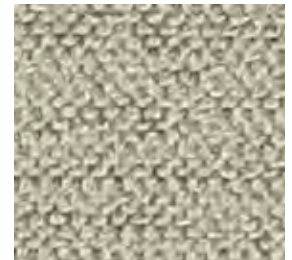
400



405



801



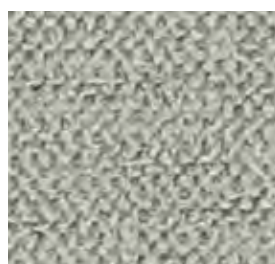
602



800



703



605



802



901

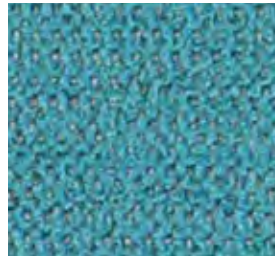
MONDO



911



001



701



603



804



309



003



700



600



500



900



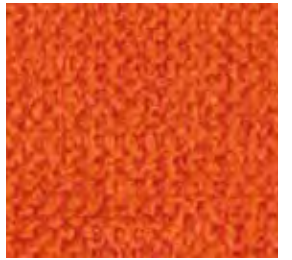
002



702



200



307



705

ANGEL ABITEX

CAT. A



802

customs code
54072011

features
100% polypropylene

width
cm ± 140

weight
± 228 g/m2

dyeing
solution dyed product

roll length
approx. 35 lm.

abrasion resistance
> 100.000 rubs, ISO 12947-2

color fastness to light
5/6, ISO 105 B02

fastness to rubbing
dry 5, wet 4/5, ISO 105 X12

seam slippage
warp 3 mm, weft 4 mm, ISO 13936-2

pilling
5, ISO 12945-2

fire resistance
11M - UNI 9175
EN 1021:14 part 1/2
BS 5852:06 crib 5
California TB 117:2013
IMO MED - Ftp 307 part 8

attention
slight colour differences between different batches are allowed we assume no responsibility for the transfer of colour/pigment caused by clothing and accessories

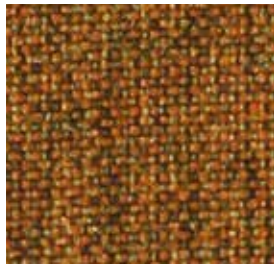
A soft feel - this is the distinctive trait of Caliente; a polypropylene chain interwoven with a polyester chenille. It has a denim shot effect and a delicate, warm look in 26 different colours.



54 / 400



46 / 500



14 / 501



55 / 701



53 / 401



41 / 502



30 / 307



39 / 700



50 / 402



09 / 800



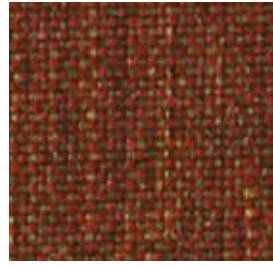
35 / 305



45 / 404



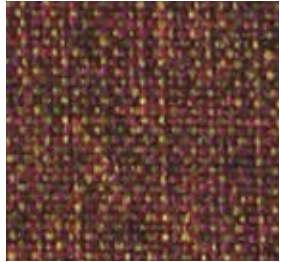
43 / 302



36 / 300



20 / 405



38 / 002



56 / 201



57 / 200



006

customs code
59031090

features
88% pvc - 7% polyester - 4% cotton
- 1% polyurethane/polycarbonate

width
cm ± 140

weight
± 715 g/m²

thickness
± 1,10 mm

roll length
approx. 30 lm.

abrasion resistance
> 200.000 rubs, ISO 5470-2

tensile strength
warp 25 N/5 cm, weft 15 N/5 cm,
ISO 1421

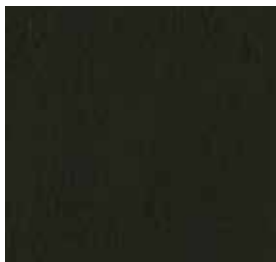
sustainability
phthalate free

fire resistance
11M - UNI 9175
EN 1021 1/2
BS 5852 part 1
California TB 117-2013
IMO FTP Code 307 part 8
ÖNOM B 3825 - schwer brennbar.

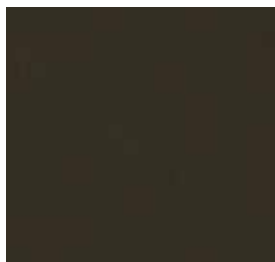
only on request
BS 5852 crib 5
DIN 4102 B1
NF P 92 507 M1

attention
slight colour differences between
different batches are allowed, we
assume no responsibility for the
transfer of colour/pigment caused
by clothing and accessories

A product with hundreds of qualities: excellent cleanability, antimicrobial and antibacterial, stretchy, non-toxic, excellent scratch and tear-resistance, fire-retardant, phthalate-free, made in Italy and comes in 62 different colours.



200



405



403



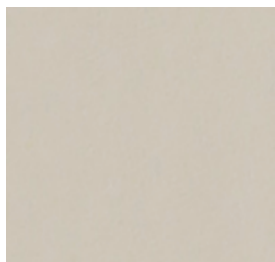
602



606



601



604



607



401



603

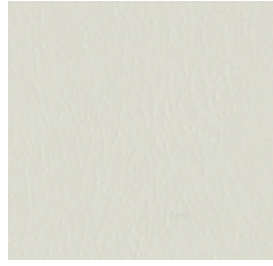
MONDO



400



600



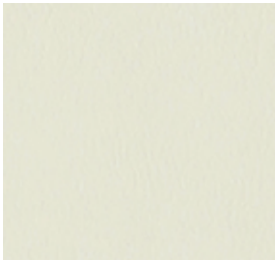
105



406



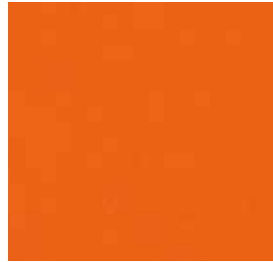
111



100



310



307



708



404



500



801



407



503



800



102



501



808



805



103



804



803



806



101



506

MONDO



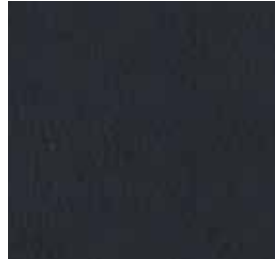
802



807



313



700



002



004



301



701



003



900



302



707



702



902



304



706



703



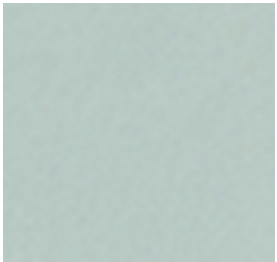
006



300



001



810



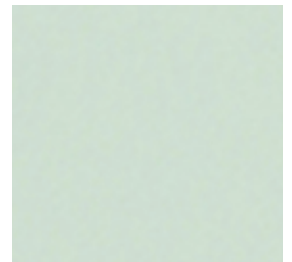
901



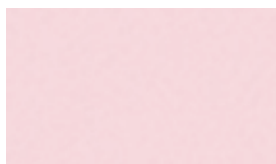
315



704



809



005



600

customs code
59039099

features
88% pvc - 6% polyester - 6% cotton

width
cm ± 140

weight
± 650 g/m2

thickness
± 0,95 mm

roll length
approx. 30 lm.

abrasion resistance
> 100.000 rubs, ISO 5470-2

color fastness to light
7, ISO 105 B02

fastness to rubbing
dry 4, wet 4, ISO 105 X12.

tensile strength
warp > 300 N/5 cm, weft > 200 N/5 cm, ISO 1421

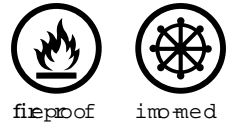
sustainability
phtalete free

fire resistance
11M - UNI 9175
EN 1021:14 part 1/2
BS 5852:06 part 1, is 1
NF-P 92 503 - M2
California TB 117:2013
IMO MED - Ftp 307 part 8
ÖNOM B 3825 - schwer brennbar.

only on request
BS 5852 crib 5

attention
slight colour differences between different batches are allowed, we assume no responsibility for the transfer of colour/pigment caused by clothing and accessories

Inca, a fire-retardant and resistant imitation leather that is suitable for any contract use as it is stretchy and pleasant to the touch. It comes in a range of 70 different colours.



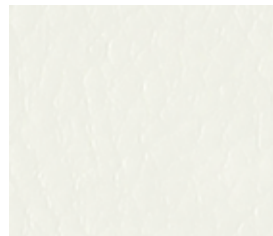
10



603



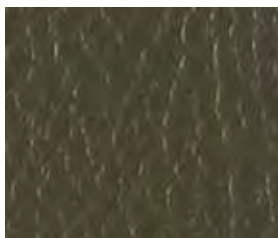
414



100



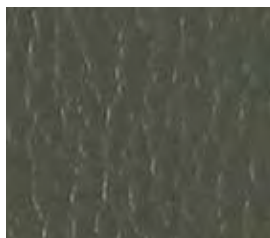
42



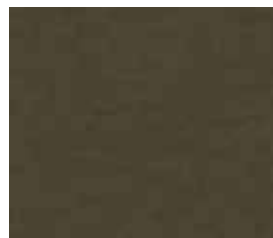
33



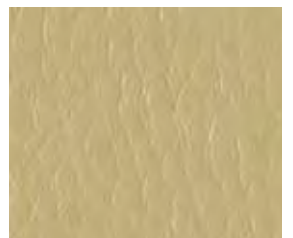
411



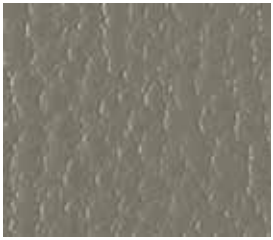
602



419



06



601



405



44



31



608



02



600



606



56



01



604



55



101



08



502



413



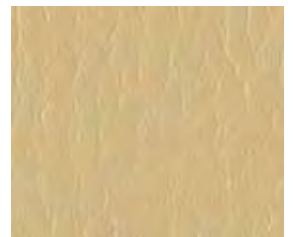
13



46



80



400



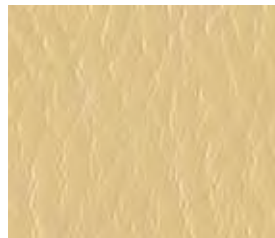
504



303



17



04



12



15



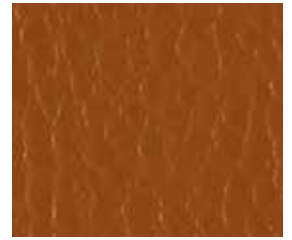
301



412



03



415



19



408



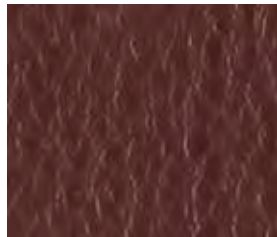
103



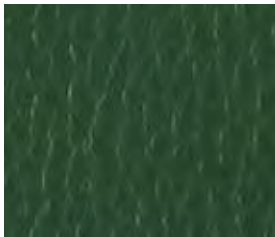
416



11



22



801



800



37



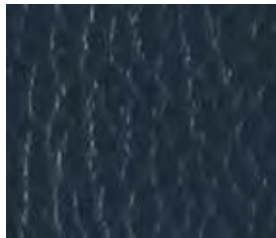
21



807



50



700



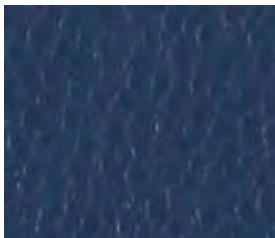
26



806



51



35



900



803



701

MONDO



20



27



45



706



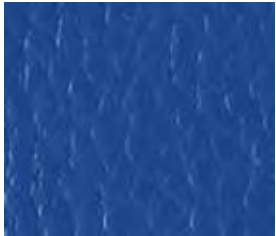
901



25



703



36



807

Composizione

65% Lana
15% Alpaca
20% Poliammide

Altezza

Ca. 142 cm

Peso

420 g/m2 (+/- 5%)

Resistenza all'abrasione

80.000 cicli Martindale (EN ISO 12947-2)

Pilling

3/4 (EN ISO 12945-2)

Ignifugazione

UNI 9178 11M California TB
17:2013 EN 1021-1&2

Solidità alla luce

4/5 (EN ISO 105-B02)

Solidità allo sfregamento

Umido 4/5; Secco 4/5 (EN ISO 105X12)

Lavaggio

Lavaggio a secco
Seguire simboli ISO

Composition

65% Wool
15% Alpaca
20% Polyamide

Width

App. 142 cm

Weight

420 g/m2 (+/- 5%)

Abrasion resistance

80.000 Martindale cycles (EN ISO 12947-2)

Pilling

3/4 (EN ISO 12945-2)

Flammability

UNI 9178 11M California TB
17:2013 EN 1021-1&2

Light fastness

4/5 (EN ISO 105-B02)

Fastness to rubbing

Wet 4/5; Dry 4/5
(EN ISO 105X12)

Cleaning

Dry-cleaning
Please see the ISO symbols



This fabric is yarn-dyed. Possible irregularities of the yarn must be considered as a feature of the product because it's a natural yarn. Batch to batch chromatic variations must be considered as normal and are to be evaluated with the usual tolerance of this type of fabric. Work separately different delivery lots.



01



02



8010



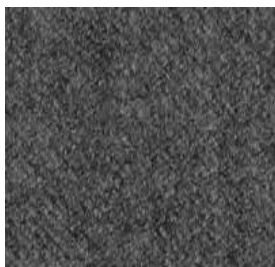
60



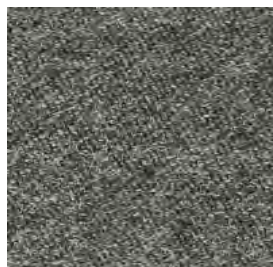
7



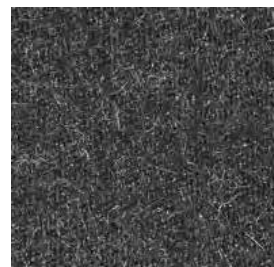
821



08



09



05



08/1

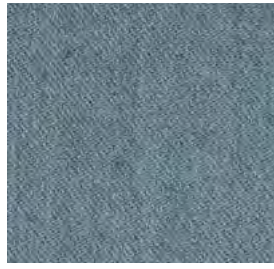
MONDO



10



806



8288



11



812



825



808



8078



23



802



11



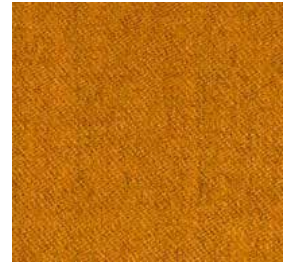
809



12



8048



16



805



810



803



ROXANA CS

Composition
100% Trevira CS

Width
Ca. 140 cm

Weight
450 g/m² (+/- 5%)

Abrasion resistance
50.000 Martindale cycles
(EN ISO 12947-2)

Pilling
4/5 (EN ISO 12945-2)

Flammability
UNI 9177 - Classe 1
NF P 92-503-507 M1
California TB 117:2013
EN 1021-1&2
BS 5852-Part 0-1 (C&M)
DIN 4102 B1
IMO MSC 307(88) Annex 1 Part 7-8
UNI 9175 - 1.IM

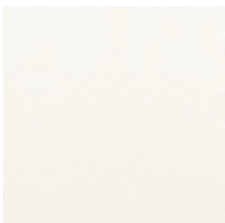
Sound absorption
UNI EN ISO 354:2003 w : 0,65

Light fastness
5 (EN ISO 105-B02)

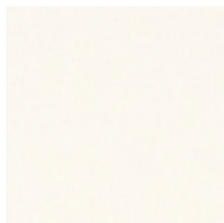
Light fastness
5 (EN ISO 105-B02)

Fastness to rubbing
Wet 4/5; Dry 4/5 (EN ISO 105X12)

Cleaning
Dry-cleaning
Please see the ISO symbols



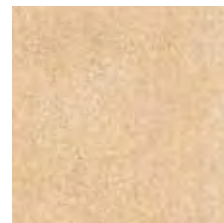
02



03



1720



1715



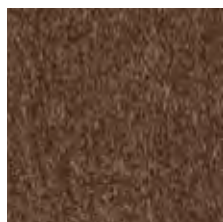
33



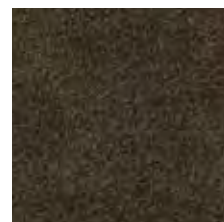
04



1709



1708



08



18



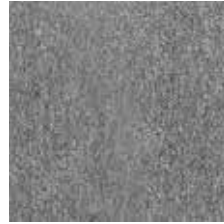
19



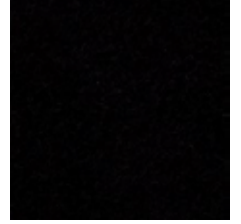
17



1201



11



12



1726



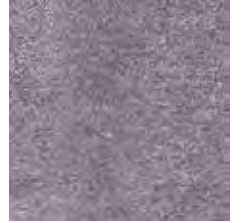
16



1001



111



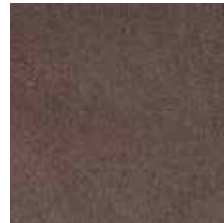
1716



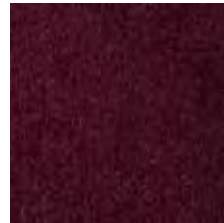
1722



35



07



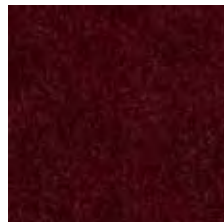
09



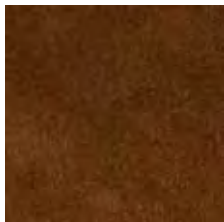
1000



1717



10



30



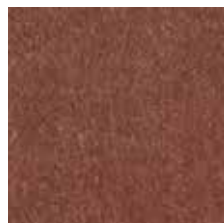
28



1004



05



1803



SOLE CS

Composition
100% Trevira CS

Width
Ca. 140 cm

Weight
525 g/m² (+/- 5%)

Abrasion resistance
50.000 Martindale cycles
(EN ISO 12947-2)

Pilling
4/5 (EN ISO 12945-2)

Flammability
UNI 9177 - Classe 1
NFP 92-503-507 M1
California TB 117:2013
EN 1021-1&2
BS 5852-Part 0-1 (C&M)
DIN 4102 B1
UNI 9175 - 1.IM
NFPA 260:2013
IMO MSC 307(88) Annex 1 Part 7-8

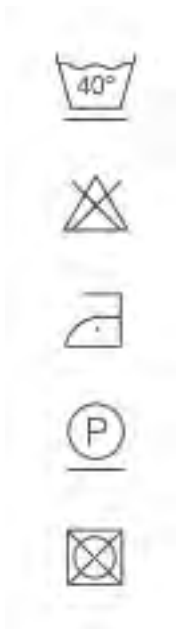
Sound absorption
UNI EN ISO 354:2003 w : 0,60

Light fastness
5 (EN ISO 105-B02)

Light fastness
5 (EN ISO 105-B02)

Fastness to rubbing
Wet 4/5; Dry 4/5 (EN ISO 105X12)

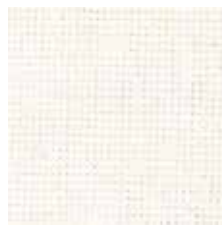
Cleaning
Wet cleaning warp
Please see the ISO symbols
Shrinkage app. 2,5%



420



421



445



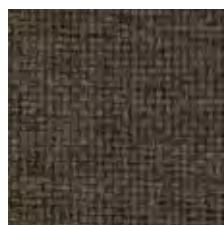
444



04



402



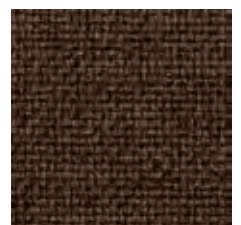
441



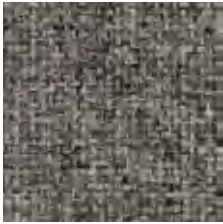
439



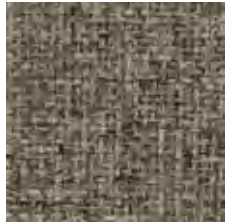
440



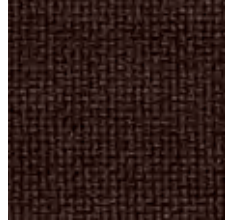
416



400



401



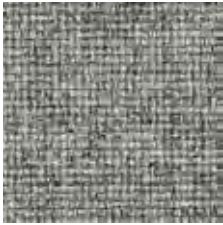
438



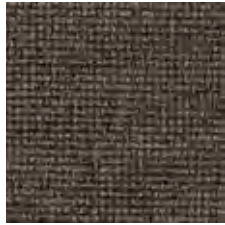
443



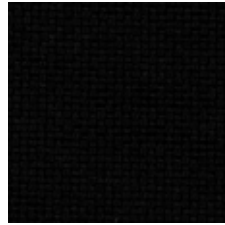
442



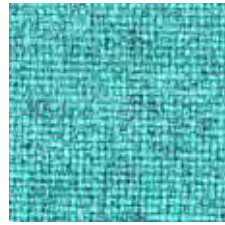
417



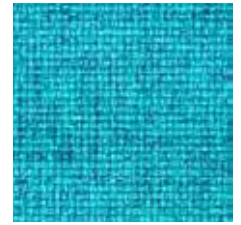
437



418



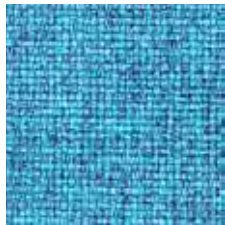
412



22



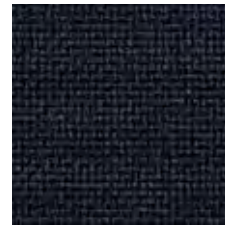
422



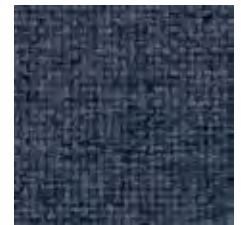
413



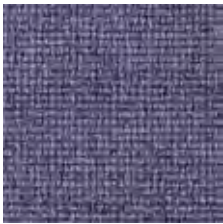
419



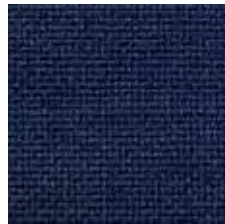
25



414



435



434



20



431



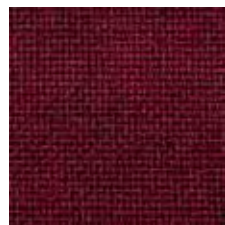
432



433



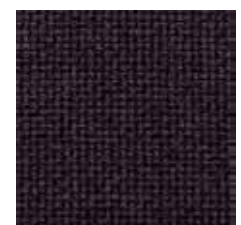
19



16

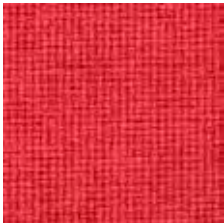


415



436

MONDO



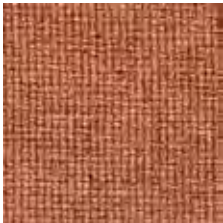
14



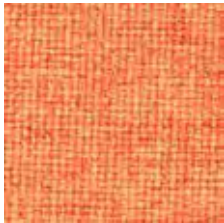
409



407



406



408



403



404



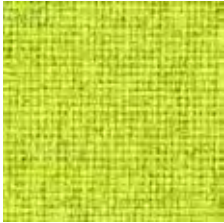
405



411



07



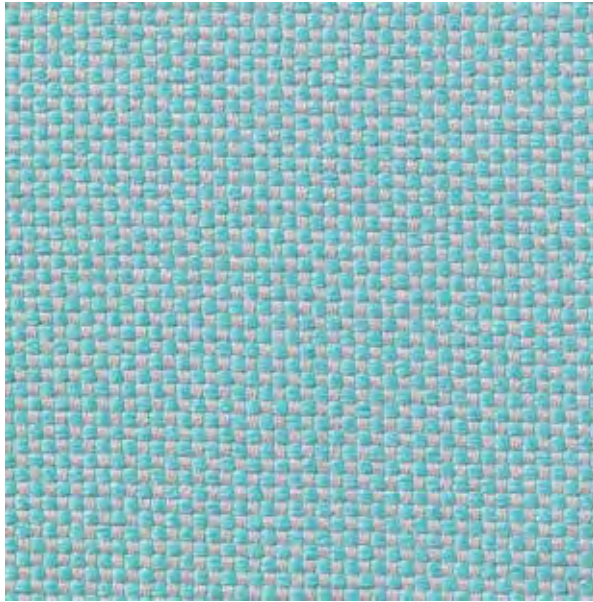
10



410



11



7052.01

binder
upholstery 01

description
chequered weave

composition
100% flame retardant polyester

width
± 140 cm, ± 55 inches

weight
± 663 gr/m², ± 21 oz/yd² fabrics

flame retardancy
EN 1021/1-2
BS 5852, crib 5
NF P 92/503-507, M1
DIN 4102, B1
IMO 2010 FTP part 8
UNI 9175, classe 1 IM
Cal TB 117
NFPA 260, class 1

colorfastness to crocking
ISO 105-X12
wet 4-5 / dry 4-5 (scale 1-5)
AATCC 8
wet 5 / dry 5 (scale 1-5)

colorfastness to light
ISO 105-B02
6 (scale 1-8)
AATCC 16.3: 40 hours
4 (scale 1-5)

seam slippage
ISO 13936 - 213936-2
warp 3 mm / weft 2 mm
ASTM D4034
warp 99 lbf / weft 81 lbf

breaking strength
ASTM D5034
warp 31.6 lbs / weft 60.9 lbs

abrasion
ISO 12947-2
>50.000 rubs martindale
ASTM D4157
42.000 double rubs wyzenbeek

pilling
ISO 12945-2
4-5 (scale 1-5)
ASTM D3511
5 (scale 1-5)

care



shrinkage: warp -1.6% / weft -1%



shrinkage: warp -3% / weft -1.4%



7052.01



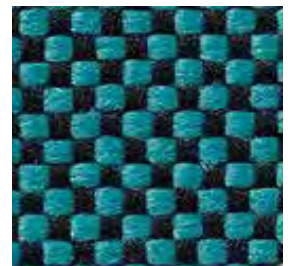
7052.02



7052.03



7052.04



7052.05



7052.06



7052.07



7052.08



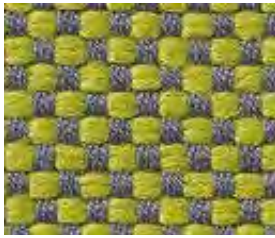
7052.09



7052.10



7052.11



7052.12



7052.13



7052.14



7052.15



7052.16



7052.17



7052.18



7052.19



7052.20



7052.21



7052.22



7052.23



7052.24



7052.25



7052.26



7052.27



7052.28



7052.29



7052.30



7052.31



7052.32



7052.33



7052.34



7052.35



7052.36



7052.37



7052.38



7052.39



7052.40



7052.41



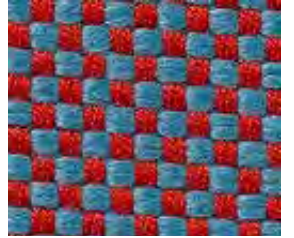
7052.42



7052.43



7052.44



7052.45



7052.46



7052.47



7052.48



7052.49



7052.50



7052.51



7052.01

binder
upholstery 01

description
blended woollen upholstery fabric

composition
92% wool / 8% polyamide

width
± 140 cm, ± 55 inches

weight
± 530 gr/m², ± 17 oz/yd² fabrics

flame retardancy
EN 1021/1-2
BS 5852, crib 5
UNI 9175, classe 1 IM
Cal TB 117-2013
NFPA 260, class 1
NF D 60-013 - AM18
IMO 2010 FTP part 8

colorfastness to crocking
ISO 105-X12
wet 4-5 / dry 4-5 (scale 1-5)
AATCC 8
wet 5 / dry 5 (scale 1-5)

colorfastness to light
ISO 105-B02
4 - 5 (scale 1-8)
AATCC 16.3
5 (scale 1-5)

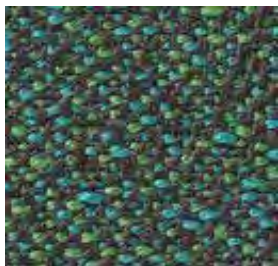
seam slippage
ISO 13936 - 2
warp 5 mm / weft 4.5 mm
ASTM D4034
warp 120 lbs / weft 87 lbs

breaking strength
ASTM D5034
warp 212 lbs / weft 191 lbs

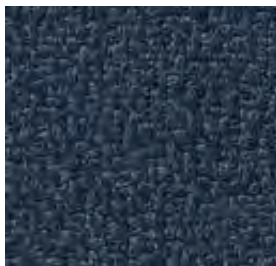
abrasion
ISO 12947-2
100.000 rubs martindale
ASTM D4157
35.000 double rubs wyzenbeek

pilling
ISO 12945-2
4-5 (scale 1-5)
ASTM D3511
5 (scale 1-5)

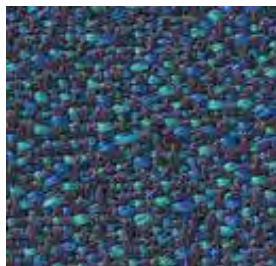
care



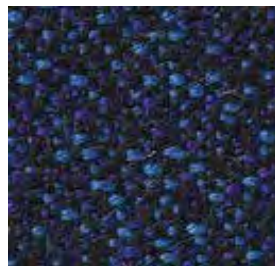
7030.14



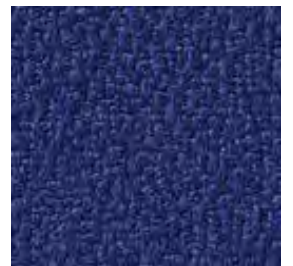
7030.13



7030.10



7030.06



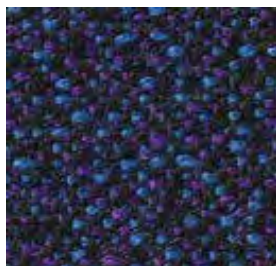
7030.05



7030.09



7030.12



7030.01



7030.15



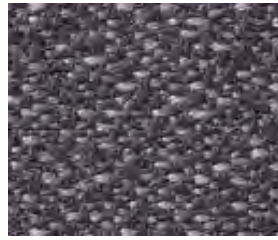
7030.16



7030.17



7030.04



7030.03



7030.08



7030.11



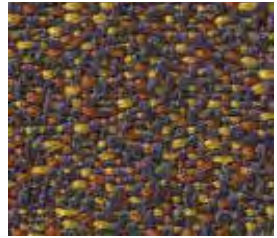
7030.07



7030.35



7030.32



7030.34



7030.20



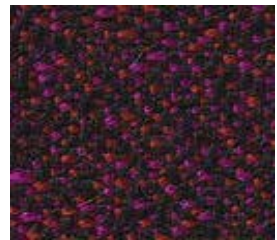
7030.24



7030.36



7030.31



7030.30



7030.33



7030.19



7030.29



7030.23



7030.26



7030.28



7030.18



7030.25



7030.37



7030.39



7030.38

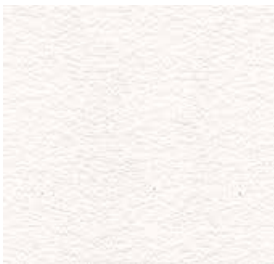


Leather: BOVINE
 Tanning: CHROMO
 Dyeing: BARREL ANILINE

Dry rubbing – 500 cycles (IUF 450)	Grey scale >=4
Wet rubbing – 250 cycles (IUF 450)	Grey scale >= 4
Perspiration - 80 cycles (IUF 470)	Grey scale >= 3/4
Finish adhesion (IUP 402)	Newton/cm >=2
Colouf fastness to light (IUP 402)	blue scale >=5
tear resistance (IUP 40)	Newton >= 20
Flexing endurance - 50.000 cycles (IUP 20)	No surface damage or cracks >= 20.000
	Ph >= 3,2

1101 OLD NATURALE

A solid color leather with a semi-glossy appearance. The vast assortment of colors, which is renewed over the years, accompanied by the classic Madras print, makes this item one of the most versatile and refined. Thickness 0.9 - 1.1 mm
 Medium size 4.20 m2



1145 BIANCO OTTICO



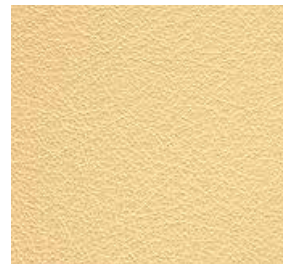
1147 BIANCO NAT



1142 MADRE PERLA



1140 CREMA



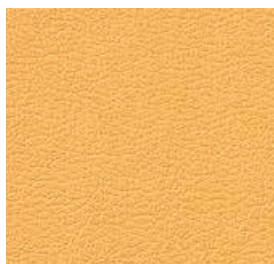
1132 VANIGLIA



1125 PAGLIA



1115 GIALLO



1110 PESCA



1167 MANDARANCIO



1168 ARANCIO



1101 OLD NATURALE



1169 MATTONE



1085 FIAMMA



1082 MELOGRANO



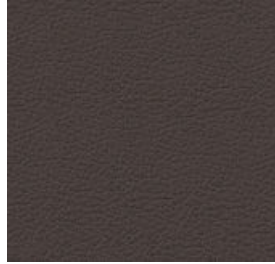
1080 BULGARO



1040 CARMELLO



1045 CACAO



1035 CIOCCOLATO



1150 TESTA DI MORO



1155 DARK BROWN



1095 ICE CREAM



1090 CONFETTO



1087 ROSA ANTICO



1075 LILLA



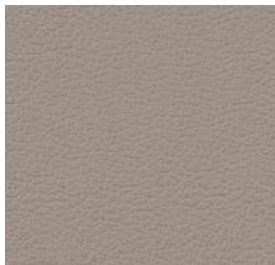
1170 VIOLETTA



1175 ZINCO



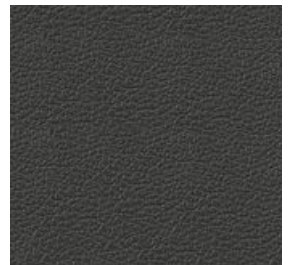
1005 ALLUMINIO



1118 STONE



1004 GRIGIO FUMO



1003 ANTRACITE



1002 CENERE



1160 RENA



1165 SENTIERO



1172 MALTA



1173 TOPO



1166 CHAMPAGNE



1050 FAGGIO



1042 NOCE



1174 MARRONE



1032 FANGO



1027 VERDE PRATO



1020 VERDE MELA



1030 MUSCHIO



1010 VERDE KJ



1000 NERO



1065 CELESTE



1171 LAVANDA



1060 AZZURRO



1055 BLU KJ



1070 PRUGNA