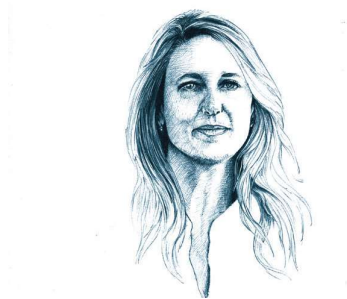




This unique modular table system creates an iconic look. Two different models with different combinations of lacquered tops.

The multiple levels and attention to detail, together with the possibility to create interesting landscapes by combining several units, make this table a useful element for both domestic and contract use.

PATRICIA URQUIOLA



Patricia Urquiola was born in Oviedo (Spain) and currently lives and works in Milan.

She graduated from the Faculty of Architecture at the Technical University of Madrid in 1989, after completing a thesis with Achille Castiglioni. From 1990 to 1992, she was assistant lecturer to both Achille Castiglioni and Eugenio Bettinelli at the Milan Polytechnic and the E.N.S.C.I. in Paris.

Between 1990 and 1996, she worked in the new product development office of De Padova and, with Vico Magistretti, signing the products: “Flower”, “Loom sofa”, “Chaise” and “Chaise Longue”.

From 1993 to 1996, she worked with the architects de Renzio and Ramerino and was engaged in architectural design, showrooms, restaurants and franchising (Maska/ Italy, Tomorrowland Stores/ Japan, Des Pres/ France).

In 1996 she became head of the design department at Lissoni Associati, working for Alessi, Antares-Flos, Artelano, Boffi, Cappellini, Cassina and Kartell, among others.

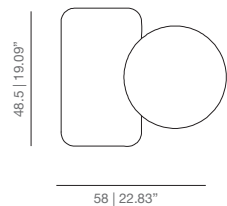
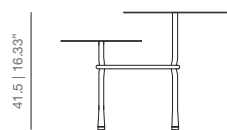
Her products were selected for the Italian Design 2001 exhibition. In 2001 she was chair of the jury for the 19th CDIM Design Award and was lecturer at the Domus Academy.

She is currently working in her own practice in Milan in the fields of design, exhibitions, art direction and architecture. Patricia Urquiola works for Alessi, B&B, Kartell, Molteni, Moroso, Coalesse and VICCARBE.

DIMENSIONS

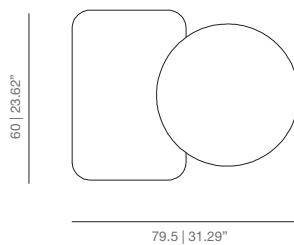
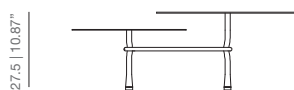
T1AB composition 1

SKU:VIMOB-601-T1AB



T1BB composition 2

SKU:VIMOB-601-T1BB



TECHINCAL INFO

Structure in calibrated powder coated steel tube in thermoreinforced polyester in white or black.

Top in MDF lacquered in the finishes of our collection or veneered in matt natural oak, cognac, ash or wenge.

Transparent injection polypropylene tips.

In origin the piece has the same colour everywhere. In case of bicolor option, you must consider the superior price category.

FINISHES

STRUCTURE



White
RAL 9003



Black
RAL 9005

TOP

Lacquered



White
RAL 9003



Black
RAL 9005



Grey
RAL 9006



Sand
NCS 3005Y50R



Tobacco
RAL 8028



Smoke Grey
RAL 1019



Silver
RAL 9006



Red
RAL 3001



Mousterd
RAL 1012



Green
RAL 6007



Blue
RAL 5024



Bronze

Stained



matt
oak



wenge



cognac



ash

CERTIFICATES





PROJECTS

Sánchez Garrido Architects | Estudio Cosín | LP House | Auditorio y Palacio de Congresos de Castellón | Wild Valencia