

## T-BONE COLLECTION



### **DESCRIPTION**

T-Bone is the idea behind a design project that aims to enhance the bone structure of the seatings in order to highlight this decorative and distinctive element. As the bones support the body so does the wood structure of our armchair which in a minimal and iconic design becomes the stylistic feature of the project. The structure is not hidden inside the upholstery but is exhibited externally in order to increase the perceived value of the product. The same distinctive element can be found in all the variants of the collection armchair, lounge and sofa.





### **Materials:**

Wooden base available in beech .  
Fabric, leather or COM.

## T-BONE COLLECTION



### ① T-BONE RARE





79	48	55	58
			
31"	19"	21¾"	22¾"

1 x box 0,33 m<sup>3</sup>

SKU:ACMOTO-401-T-BONE RARE







### ① T-BONE RARE SPECIAL

79	48	55	58
			
31"	19"	21¾"	22¾"

1 x box 0,33 m<sup>3</sup>



### ① T-BONE P WELL DONE





83	45	70	73
			
32¾"	17¾"	27½"	28¾"

1 x box 0,55 m<sup>3</sup>

SKU:ACMOTO-402-T-BONE P WELL DONE







### ① T-BONE P WELL DONE SPECIAL

83	45	70	73
			
32¾"	17¾"	27½"	28¾"

1 x box 0,55 m<sup>3</sup>







### ① T-BONE D WELL DONE

83	45	70	130
			
32¾"	17¾"	27½"	51¼"

1 x box 0,82 m<sup>3</sup>



### ① T-BONE D WELL DONE SPECIAL

83	45	70	130
			
32¾"	17¾"	27½"	51¼"

1 x box 0,82 m<sup>3</sup>

# WOOD FINISHES

## STANDARD WOOD BEECH



# CALIENTE ABITEX

CAT. A



802

**customs code**  
54079300

**features**  
52% polypropylene, 48% polyester

**width**  
cm ± 140

**weight**  
± 210 g/m<sup>2</sup>

**dyeing**  
solution dyed product

**roll length**  
approx. 35 lm.

**abrasion resistance**  
40.000 rubs, ISO 12947-2

**color fastness to light**  
4/5, ISO 105 B02

**fastness to rubbing**  
dry 4/5, wet 4, ISO 105 X12

**seam slippage**  
warp 2 mm, weft 2 mm, ISO 13936-2

**pilling**  
4/5, ISO 12945-2

**fire resistance**  
11M - UNI 9175  
EN 1021:14 part 1/2  
BS 5852:79 part 1, is 1 (with treatment, min. 200 lm)  
California TB 117:2013  
IMO MED - Ftp 307 part 8  
IMO MED - Ftp 307 part 7

**attention**  
slight colour differences between different batches are allowed



A soft feel - this is the distinctive trait of Caliente; a polypropylene chain interwoven with a polyester chenille. It has a denim shot effect and a delicate, warm look in 26 different colours.



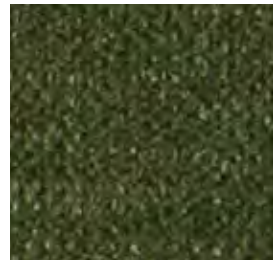
100



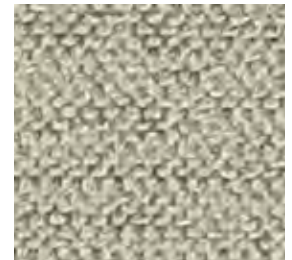
400



405



801



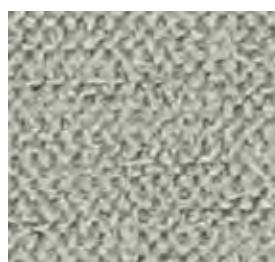
602



800



703



605



802



901

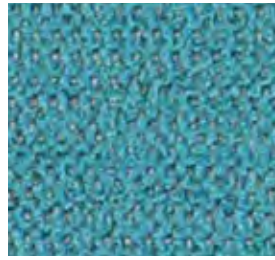
# MONDO



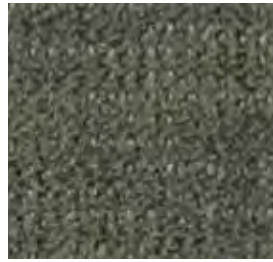
911



001



701



603



804



309



003



700



600



500



900



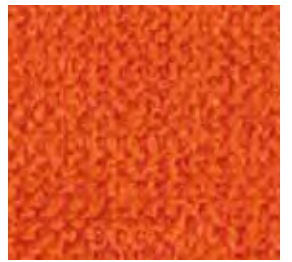
002



702



200



307



705

ANGEL ABITEX

CAT. A



802

**customs code**  
54072011

**features**  
100% polypropylene

**width**  
cm ± 140

**weight**  
± 228 g/m2

**dyeing**  
solution dyed product

**roll length**  
approx. 35 lm.

**abrasion resistance**  
> 100.000 rubs, ISO 12947-2

**color fastness to light**  
5/6, ISO 105 B02

**fastness to rubbing**  
dry 5, wet 4/5, ISO 105 X12

**seam slippage**  
warp 3 mm, weft 4 mm, ISO 13936-2

**pilling**  
5, ISO 12945-2

**fire resistance**  
11M - UNI 9175  
EN 1021:14 part 1/2  
BS 5852:06 crib 5  
California TB 117:2013  
IMO MED - Ftp 307 part 8

**attention**  
slight colour differences between different batches are allowed we assume no responsibility for the transfer of colour/pigment caused by clothing and accessories

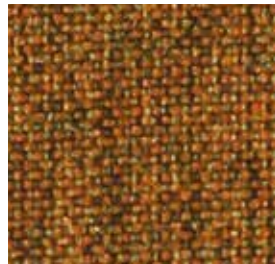
A soft feel - this is the distinctive trait of Caliente; a polypropylene chain interwoven with a polyester chenille. It has a denim shot effect and a delicate, warm look in 26 different colours.



54 / 400



46 / 500



14 / 501



55 / 701



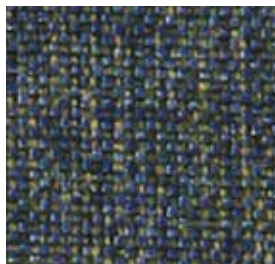
53 / 401



41 / 502



30 / 307



39 / 700



50 / 402



09 / 800



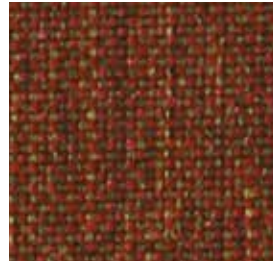
35 / 305



45 / 404



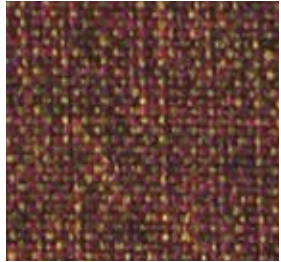
43 / 302



36 / 300



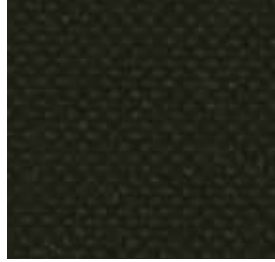
20 / 405



38 / 002



56 / 201



57 / 200



006

**customs code**  
59031090

**features**  
88% pvc - 7% polyester - 4% cotton  
- 1% polyurethane/polycarbonate

**width**  
cm ± 140

**weight**  
± 715 g/m<sup>2</sup>

**thickness**  
± 1,10 mm

**roll length**  
approx. 30 lm.

**abrasion resistance**  
> 200.000 rubs, ISO 5470-2

**tensile strength**  
warp 25 N/5 cm, weft 15 N/5 cm,  
ISO 1421

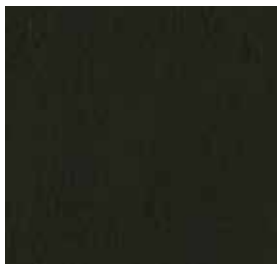
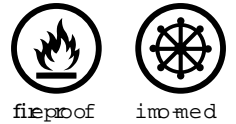
**sustainability**  
phthalate free

**fire resistance**  
11M - UNI 9175  
EN 1021 1/2  
BS 5852 part 1  
California TB 117-2013  
IMO FTP Code 307 part 8  
ÖNOM B 3825 - schwer brennbar.

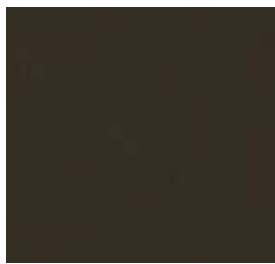
**only on request**  
BS 5852 crib 5  
DIN 4102 B1  
NF P 92 507 M1

**attention**  
slight colour differences between  
different batches are allowed, we  
assume no responsibility for the  
transfer of colour/pigment caused  
by clothing and accessories

A product with hundreds of qualities: excellent cleanability, antimicrobial and antibacterial, stretchy, non-toxic, excellent scratch and tear-resistance, fire-retardant, phthalate-free, made in Italy and comes in 62 different colours.



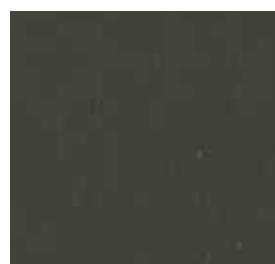
200



405



403



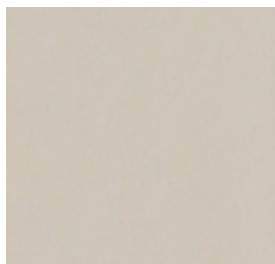
602



606



601



604



607



401



603



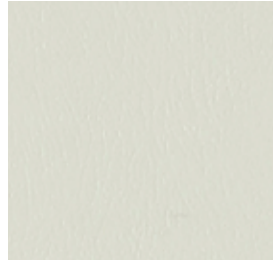
# MONDO



400



600



105



406



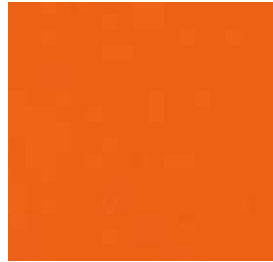
111



100



310



307



708



404



500



801



407



503



800



102



501



808



805



103



804



803



806



101



506

# MONDO



802



807



313



700



002



004



301



701



003



900



302



707



702



902



304



706



703



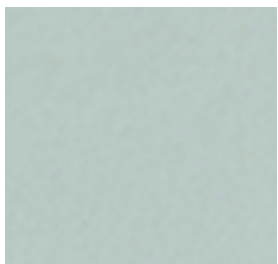
006



300



001



810



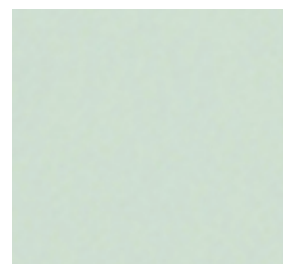
901



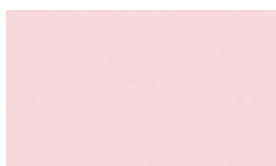
315



704



809



005



600

**customs code**  
59039099

**features**  
88% pvc - 6% polyester - 6% cotton

**width**  
cm ± 140

**weight**  
± 650 g/m2

**thickness**  
± 0,95 mm

**roll length**  
approx. 30 lm.

**abrasion resistance**  
> 100.000 rubs, ISO 5470-2

**color fastness to light**  
7, ISO 105 B02

**fastness to rubbing**  
dry 4, wet 4, ISO 105 X12.

**tensile strength**  
warp > 300 N/5 cm, weft > 200 N/5 cm, ISO 1421

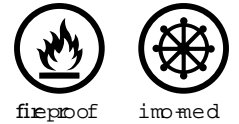
**sustainability**  
phtalete free

**fire resistance**  
11M - UNI 9175  
EN 1021:14 part 1/2  
BS 5852:06 part 1, is 1  
NF-P 92 503 - M2  
California TB 117:2013  
IMO MED - Ftp 307 part 8  
ÖNOM B 3825 - schwer brennbar.

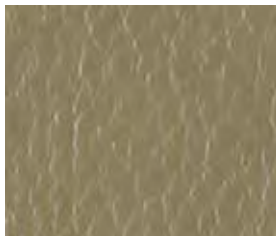
**only on request**  
BS 5852 crib 5

**attention**  
slight colour differences between different batches are allowed, we assume no responsibility for the transfer of colour/pigment caused by clothing and accessories

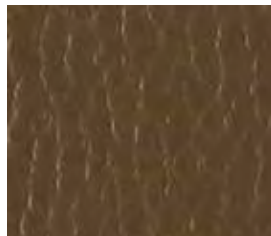
Inca, a fire-retardant and resistant imitation leather that is suitable for any contract use as it is stretchy and pleasant to the touch. It comes in a range of 70 different colours.



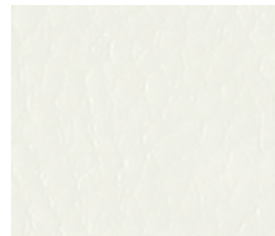
10



603



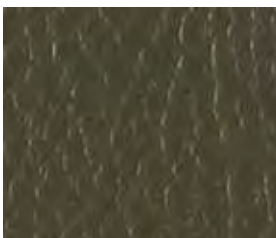
414



100



42



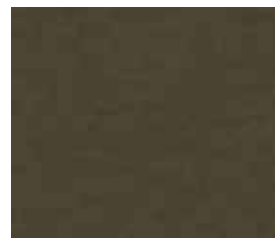
33



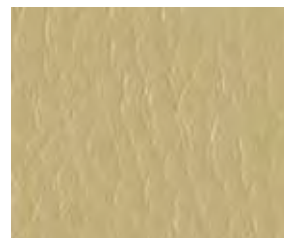
411



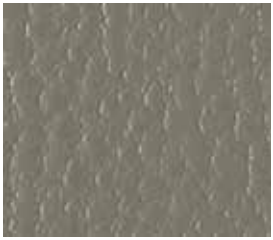
602



419



06



601



405



44



31



608



02



600



606



56



01



604



55



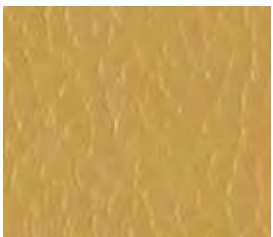
101



08



502



413



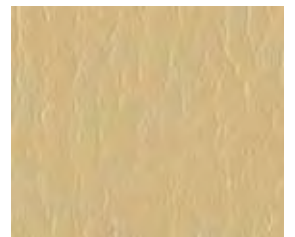
13



46



80



400



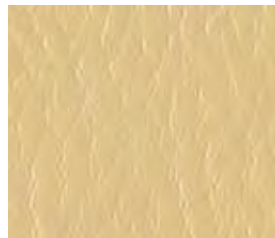
504



303



17



04



12



15



301



412



03



415



19



408



103



416



11



22



801



800



37



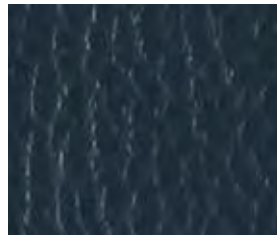
21



807



50



700



26



806



51



35



900



803

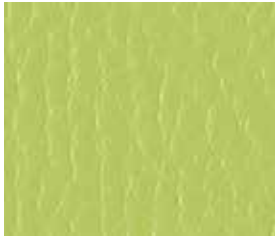


701

# MONDO



20



27



45



706



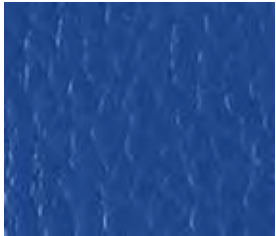
901



25



703



36



807

**Composizione**

65% Lana  
15% Alpaca  
20% Poliammide

**Altezza**

Ca. 142 cm

**Peso**

420 g/m2 (+/- 5%)

**Resistenza all'abrasione**

80.000 cicli Martindale (EN ISO 12947-2)

**Pilling**

3/4 (EN ISO 12945-2)

**Ignifugazione**

UNI 9178 11M California TB  
17:2013 EN 1021-1&2

**Solidità alla luce**

4/5 (EN ISO 105-B02)

**Solidità allo sfregamento**

Umido 4/5; Secco 4/5 (EN ISO 105X12)

**Lavaggio**

Lavaggio a secco  
Seguire simboli ISO

**Composition**

65% Wool  
15% Alpaca  
20% Polyamide

**Width**

App. 142 cm

**Weight**

420 g/m2 (+/- 5%)

**Abrasion resistance**

80.000 Martindale cycles (EN ISO 12947-2)

**Pilling**

3/4 (EN ISO 12945-2)

**Flammability**

UNI 9178 11M California TB  
17:2013 EN 1021-1&2

**Light fastness**

4/5 (EN ISO 105-B02)

**Fastness to rubbing**

Wet 4/5; Dry 4/5  
(EN ISO 105X12)

**Cleaning**

Dry-cleaning  
Please see the ISO symbols



This fabric is yarn-dyed. Possible irregularities of the yarn must be considered as a feature of the product because it's a natural yarn. Batch to batch chromatic variations must be considered as normal and are to be evaluated with the usual tolerance of this type of fabric. Work separately different delivery lots.



01



02



8010



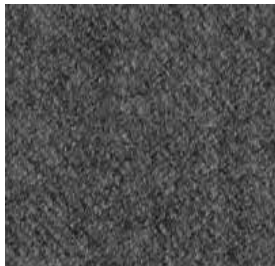
60



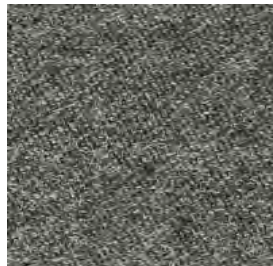
7



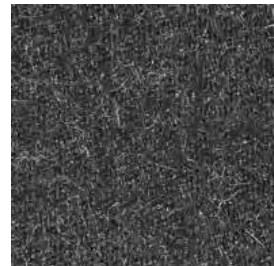
821



08



09



05



08/1

# MONDO



10



806



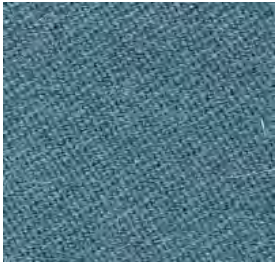
8288



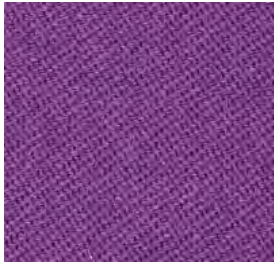
11



812



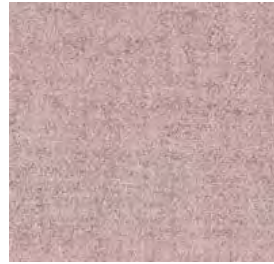
825



808



8078



23



802



11



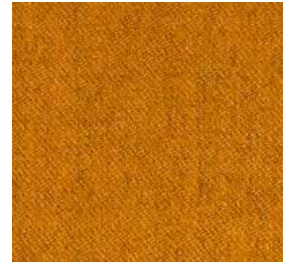
809



12



8048



16



805



810



803





ROXANA CS

**Composition**  
100% Trevira CS

**Width**  
Ca. 140 cm

**Weight**  
450 g/m<sup>2</sup> (+/- 5%)

**Abrasion resistance**  
50.000 Martindale cycles  
(EN ISO 12947-2)

**Pilling**  
4/5 (EN ISO 12945-2)

**Flammability**  
UNI 9177 - Classe 1  
NF P 92-503-507 M1  
California TB 117:2013  
EN 1021-1&2  
BS 5852-Part 0-1 (C&M)  
DIN 4102 B1  
IMO MSC 307(88) Annex 1 Part 7-8  
UNI 9175 - 1.IM

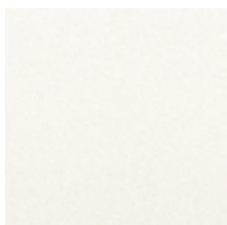
**Sound absorption**  
UNI EN ISO 354:2003 w : 0,65

**Light fastness**  
5 (EN ISO 105-B02)

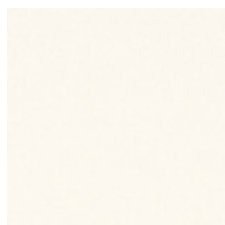
**Light fastness**  
5 (EN ISO 105-B02)

**Fastness to rubbing**  
Wet 4/5; Dry 4/5 (EN ISO 105X12)

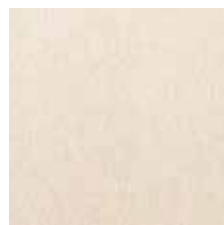
**Cleaning**  
Dry-cleaning  
Please see the ISO symbols



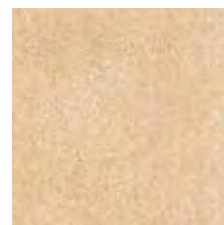
02



03



1720



1715



33



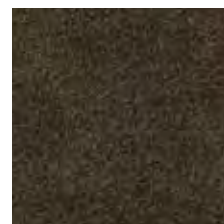
04



1709



1708



08



18

# MONDO



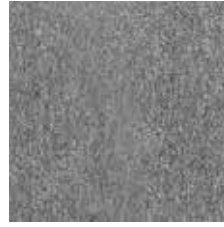
19



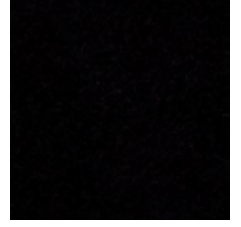
17



1201



11



12



1726



16



1001



111



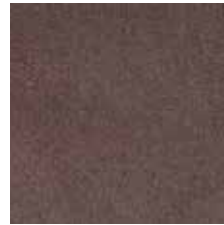
1716



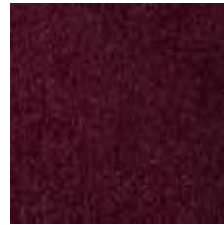
1722



35



07



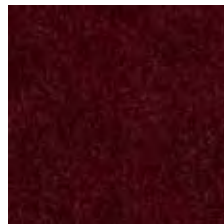
09



1000



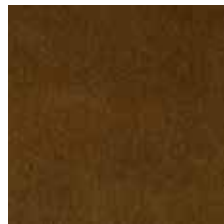
1717



10



30



28



1004



05



1803



SOLE CS

**Composition**  
100% Trevira CS

**Width**  
Ca. 140 cm

**Weight**  
525 g/m<sup>2</sup> (+/- 5%)

**Abrasion resistance**  
50.000 Martindale cycles  
(EN ISO 12947-2)

**Pilling**  
4/5 (EN ISO 12945-2)

**Flammability**  
UNI 9177 - Classe 1  
NFP 92-503-507 M1  
California TB 117:2013  
EN 1021-1&2  
BS 5852-Part 0-1 (C&M)  
DIN 4102 B1  
UNI 9175 - 1.IM  
NFPA 260:2013  
IMO MSC 307(88) Annex 1 Part 7-8

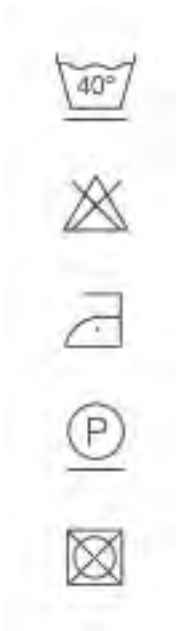
**Sound absorption**  
UNI EN ISO 354:2003 w : 0,60

**Light fastness**  
5 (EN ISO 105-B02)

**Light fastness**  
5 (EN ISO 105-B02)

**Fastness to rubbing**  
Wet 4/5; Dry 4/5 (EN ISO 105X12)

**Cleaning**  
Wet cleaning warp  
Please see the ISO symbols  
Shrinkage app. 2,5%



420



421



445



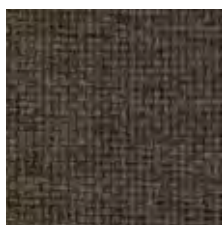
444



04



402



441



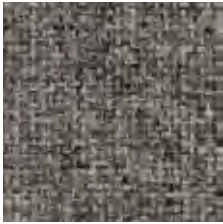
439



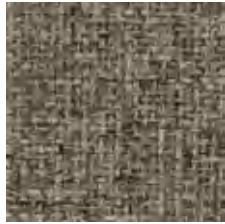
440



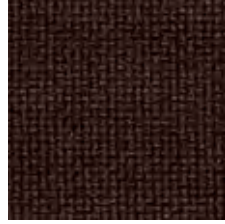
416



400



401



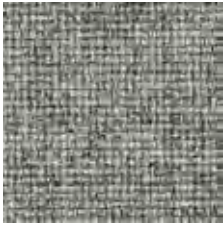
438



443



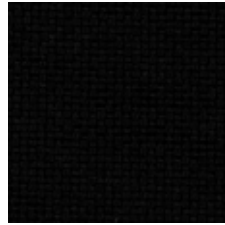
442



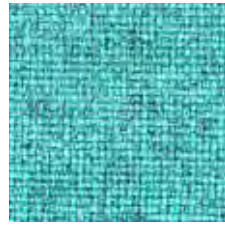
417



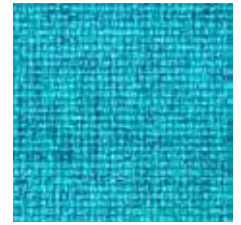
437



418



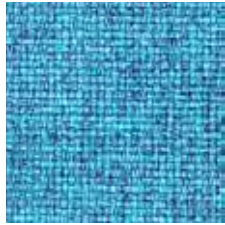
412



22



422



413



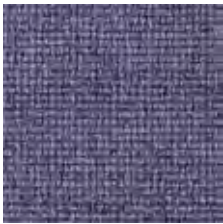
419



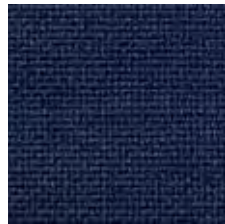
25



414



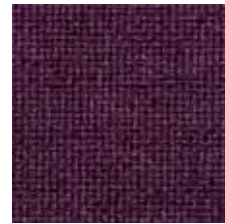
435



434



20



431



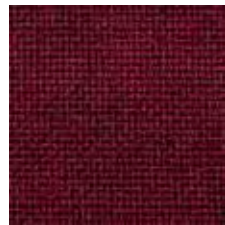
432



433



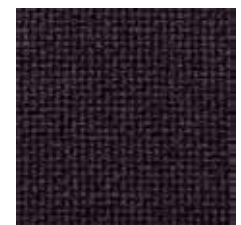
19



16



415



436

# MONDO



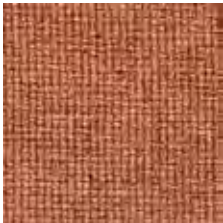
14



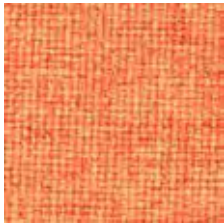
409



407



406



408



403



404



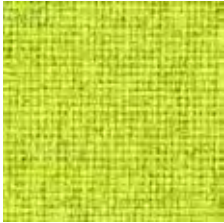
405



411



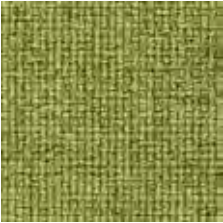
07



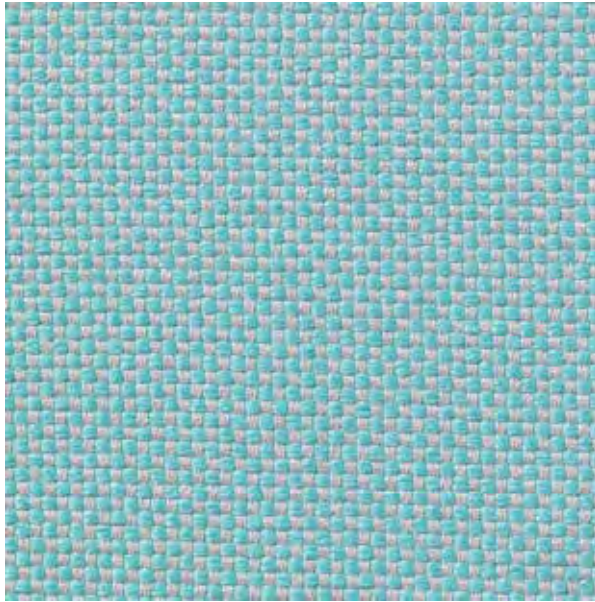
10



410



11



7052.01

**binder**  
upholstery 01

**description**  
chequered weave

**composition**  
100% flame retardant polyester

**width**  
± 140 cm, ± 55 inches

**weight**  
± 663 gr/m<sup>2</sup>, ± 21 oz/yd<sup>2</sup> fabrics

**flame retardancy**  
EN 1021 / 1-2  
BS 5852, crib 5  
NF P 92 / 503-507, M1  
DIN 4102, B1  
IMO 2010 FTP part 8  
UNI 9175, classe 1 IM  
Cal TB 117  
NFPA 260, class 1

**colorfastness to crocking**  
ISO 105-X12  
wet 4-5 / dry 4-5 (scale 1-5)  
AATCC 8  
wet 5 / dry 5 (scale 1-5)

**colorfastness to light**  
ISO 105-B02  
6 (scale 1-8)  
AATCC 16.3: 40 hours  
4 (scale 1-5)

**seam slippage**  
ISO 13936 - 213936-2  
warp 3 mm / weft 2 mm  
ASTM D4034  
warp 99 lbf / weft 81 lbf

**breaking strength**  
ASTM D5034  
warp 31.6 lbs / weft 60.9 lbs

**abrasion**  
ISO 12947-2  
>50.000 rubs martindale  
ASTM D4157  
42.000 double rubs wyzenbeek

**pilling**  
ISO 12945-2  
4-5 (scale 1-5)  
ASTM D3511  
5 (scale 1-5)

**care**



shrinkage: warp -1.6% / weft -1%



shrinkage: warp -3% / weft -1.4%



7052.01



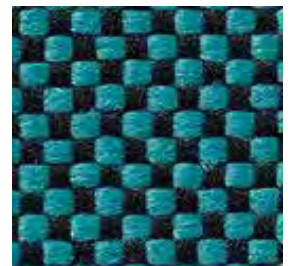
7052.02



7052.03



7052.04



7052.05



7052.06



7052.07



7052.08



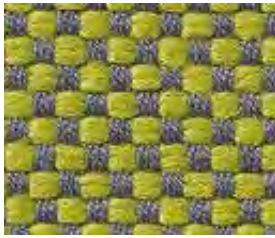
7052.09



7052.10



7052.11



7052.12



7052.13



7052.14



7052.15



7052.16



7052.17



7052.18



7052.19



7052.20



7052.21



7052.22



7052.23



7052.24



7052.25



7052.26



7052.27



7052.28



7052.29



7052.30



7052.31



7052.32



7052.33



7052.34



7052.35



7052.36



7052.37



7052.38



7052.39



7052.40



7052.41



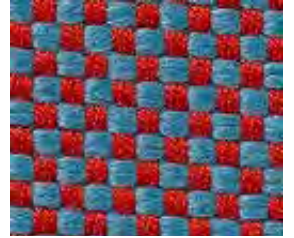
7052.42



7052.43



7052.44



7052.45



7052.46



7052.47



7052.48



7052.49

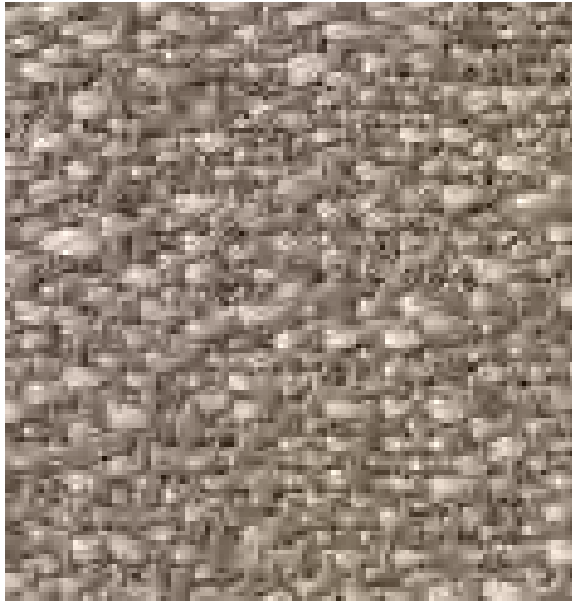


7052.50



7052.51





7052.01

**binder**  
upholstery 01

**description**  
blended woollen upholstery fabric

**composition**  
92% wool / 8% polyamide

**width**  
± 140 cm, ± 55 inches

**weight**  
± 530 gr/m<sup>2</sup>, ± 17 oz/yd<sup>2</sup> fabrics

**flame retardancy**  
EN 1021/1-2  
BS 5852, crib 5  
UNI 9175, classe 1 IM  
Cal TB 117-2013  
NFPA 260, class 1  
NF D 60-013 - AM18  
IMO 2010 FTP part 8

**colorfastness to crocking**  
ISO 105-X12  
wet 4-5 / dry 4-5 (scale 1-5)  
AATCC 8  
wet 5 / dry 5 (scale 1-5)

**colorfastness to light**  
ISO 105-B02  
4 - 5 (scale 1-8)  
AATCC 16.3  
5 (scale 1-5)

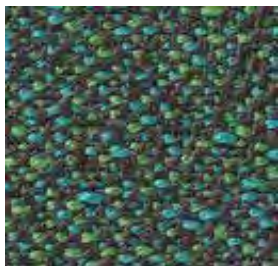
**seam slippage**  
ISO 13936 - 2  
warp 5 mm / weft 4.5 mm  
ASTM D4034  
warp 120 lbs / weft 87 lbs

**breaking strength**  
ASTM D5034  
warp 212 lbs / weft 191 lbs

**abrasion**  
ISO 12947-2  
100.000 rubs martindale  
ASTM D4157  
35.000 double rubs wyzenbeek

**pilling**  
ISO 12945-2  
4-5 (scale 1-5)  
ASTM D3511  
5 (scale 1-5)

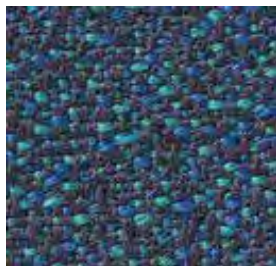
care



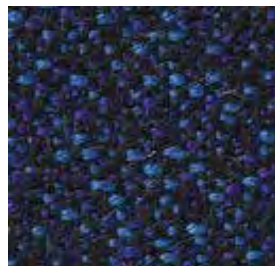
7030.14



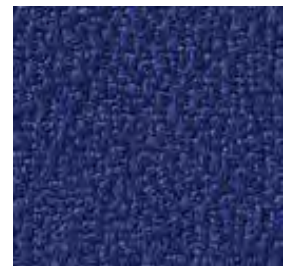
7030.13



7030.10



7030.06



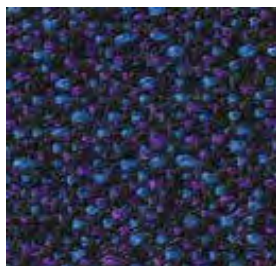
7030.05



7030.09



7030.12



7030.01



7030.15



7030.16



7030.17



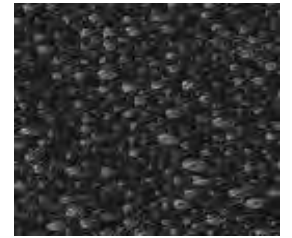
7030.04



7030.03



7030.08



7030.11



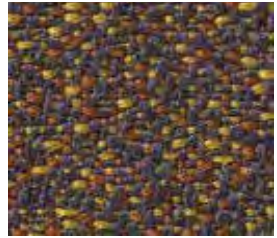
7030.07



7030.35



7030.32



7030.34



7030.20



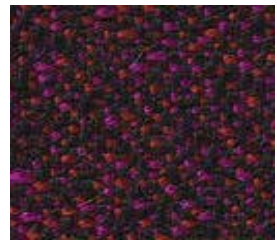
7030.24



7030.36



7030.31



7030.30



7030.33



7030.19



7030.29



7030.23



7030.26



7030.28



7030.18



7030.25



7030.37



7030.39



7030.38

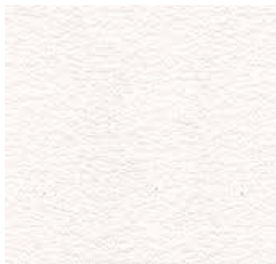


Leather: BOVINE  
 Tanning: CHROMO  
 Dyeing: BARREL ANILINE

Dry rubbing – 500 cycles (IUF 450)	Grey scale >=4
Wet rubbing – 250 cycles (IUF 450)	Grey scale >= 4
Perspiration - 80 cycles (IUF 470)	Grey scale >= 3/4
Finish adhesion (IUP 402)	Newton/cm >=2
Colouf fastness to light (IUP 402)	blue scale >=5
tear resistance (IUP 40)	Newton >= 20
Flexing endurance - 50.000 cycles (IUP 20)	No surface damage or cracks >= 20.000
	Ph >= 3,2

**1101 OLD NATURALE**

A solid color leather with a semi-glossy appearance. The vast assortment of colors, which is renewed over the years, accompanied by the classic Madras print, makes this item one of the most versatile and refined. Thickness 0.9 - 1.1 mm  
 Medium size 4.20 m2



1145 BIANCO OTTICO



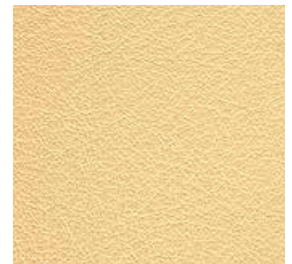
1147 BIANCO NAT



1142 MADRE PERLA



1140 CREMA



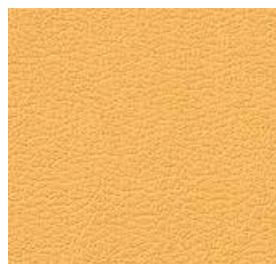
1132 VANIGLIA



1125 PAGLIA



1115 GIALLO



1110 PESCA



1167 MANDARANCIO



1168 ARANCIO



1101 OLD NATURALE



1169 MATTONE



1085 FIAMMA



1082 MELOGRANO



1080 BULGARO



1040 CARMELLO



1045 CACAO



1035 CIOCCOLATO



1150 TESTA DI MORO



1155 DARK BROWN



1095 ICE CREAM



1090 CONFETTO



1087 ROSA ANTICO



1075 LILLA



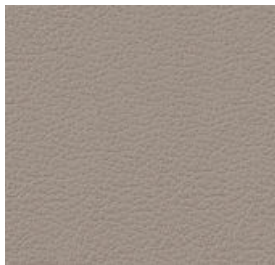
1170 VIOLETTA



1175 ZINCO



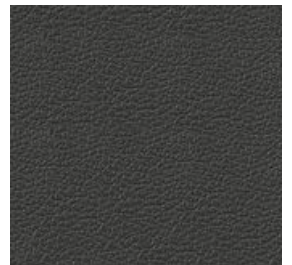
1005 ALLUMINIO



1118 STONE



1004 GRIGIO FUMO



1003 ANTRACITE



1002 CENERE



1160 RENA



1165 SENTIERO



1172 MALTA



1173 TOPO



1166 CHAMPAGNE



1050 FAGGIO



1042 NOCE



1174 MARRONE



1032 FANGO



1027 VERDE PRATO



1020 VERDE MELA



1030 MUSCHIO



1010 VERDE KJ



1000 NERO



1065 CELESTE



1171 LAVANDA



1060 AZZURRO



1055 BLU KJ



1070 PRUGNA