

SPLASH

SKU: DIMOLE-401-S1823

PLASTIC BACKREST
AND MESH

BACKREST
REMOVABLE
WRITING PADDLE

UNION KIT AND
CHAIR TROLLEY

MADE IN THE
EUROPEAN UNION

Designed by Alberto Basaglia and Natalia Rota Nodari, SPLASH is unclassifiable, but by itself, it represents renewal, the entry into a new phase in the spaces in which it sits. Lightness, brightness, and straight lines for new times. An extremely comfortable innovative design based on the idea of clean lines, with a steel frame.

Different versions available: swivel base, cantilever, stool and benches up to 4 seats. Stackable in up to 20 units for the cantilever and stool models (15 units with upholstery). Stackable table up to 10 units.



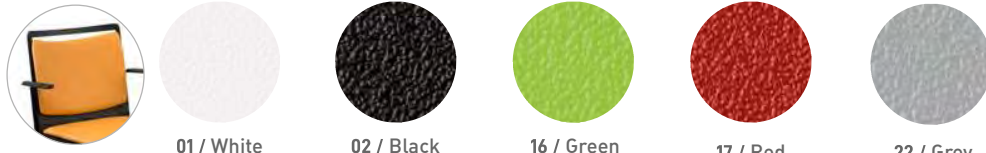
Designed by ALBERTO BASAGLIA and NATALIA ROTA NODARI

Alberto Basaglia and Natalia Rota Nodari have been working on interior design and building construction projects since 1997, with the aim of creating a design with pure lines and contrasting character. In 1999 they were awarded the “Young & Design” award for their ability to analyze the company with respect to the potential needs of customers. They also won the “Good Design 2007” award for a program of modular bookcases. They designed the L001 lamp and seconded the L002, Time Out, Happy Apple and Colette series lamps, which have contributed to highlighting the Pedrali collection. “Interpreting the specific energies of one’s interlocutor and finding ways to enhance them through the creation of alternative visions is a fascinating challenge.”

01.

Plastic backrest: Injected polypropylene, reinforced with 10% fiber, 100% recyclable and with anti-UV treatment. Optional fireproof treatment (UNE 23727/90 / UNE 23721/90 / UNE 23724).

Optional: Polypropylene inner panel with flexible high density polyurethane foam (hard) 40 kg/m³ (EN ISO 845 / BS 5852/10).



01 / White 02 / Black 16 / Green 17 / Red 22 / Grey

Mesh backrest: Injected polypropylene structure, reinforced with 10% fiber, 100% recyclable and with anti-UV treatment. Optional fireproof treatment (UNE 23727/90 / UNE 23721/90 / UNE 23724).



01 / White 02 / Black 22 / Grey 01 / White 02 / Black 06 / Orange

Highly resistant technical mesh backrest whose characteristics are:

Thickness: 1.15 mm.

Weight of the fabric (UNI 9213/3): 560 gr/m²

Density of warp threads (UNI 1049/2): 6.1 threads/cm.

Density of weft threads (UNI 1049/2): 5.3 threads/cm.

Warp breaking load (UNI EN ISO 1421): 310 kg/cm.

Weft breaking load (UNI EN ISO 1421): 270 kg/cm.

Elongation at break in warp (UNI EN ISO 1421): 21%.

Elongation at break in weft (UNI EN ISO 1421): 15%.

Fatigue resistance: EN 1728/00 / EN 15373/07

Light resistance: EN ISO 4892-2/06.

Color resistance to rubbing: EN ISO 105-x12/03.

Abrasion resistance: EN ISO 12947-2/98.

Composition:

- 70% PVC
- 30% Polyester

02.

Seat

Injected polypropylene, reinforced with 10% fiber, 100% recyclable and with anti-UV treatment.

Optional fireproof treatment (UNE 23727/90 / UNE 23721/90 / UNE 23724).

Optional: Polypropylene inner panel with flexible high density polyurethane foam (hard) 40 kg/m³ (EN ISO 845 / BS 5852/10).



03.

Structure

Chrome-plated steel round rod, 12 to 15 microns thick, 11 mm diameter.

04.

Armrests (optional)

Injected polypropylene, reinforced with 10% fiber, 100% recyclable and with anti-UV treatment. Optional fireproof treatment (UNE 23727/90 / UNE 23721/90 / UNE 23724).



05.

Gas lift

The seat moves up and down by operating a lever on the bottom right of the seat.



06.

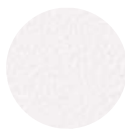
Gas column, bases and wheels

- Lifting using a class 3 black gas column (UNI 9084/02), tested for users weighing up to 120 kg.
- Polished aluminum base 65 cm diameter. This model comes with desmopan double rubberized 50 mm diameter wheels with cromed cover.
- Black nylon base of 65 cm diameter. This model comes with double Desmopan rubberized nylon wheels of 65 mm diameter.
- The base connection bolt has a circular nylon ring to prevent noise when used on metal or aluminum bases.
- Optional: Anti-slip gliders in black nylon.



01.

Plastic backrest: Injected polypropylene, reinforced with 10% fiber, 100% recyclable and with anti-UV treatment. Optional fireproof treatment (UNE 23727/90 / UNE 23721/90 / UNE 23724).



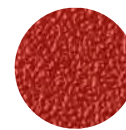
01 / White



02 / Black



16 / Green



17 / Red

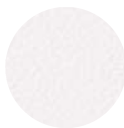


22 / Grey

Optional: Polypropylene inner panel with flexible high density polyurethane foam (hard) 40 kg/m³ (EN ISO 845 / BS 5852/10).



Mesh backrest: Injected polypropylene structure, reinforced with 10% fiber, 100% recyclable and with anti-UV treatment. Optional fireproof treatment (UNE 23727/90 / UNE 23721/90 / UNE 23724).



01 / White



02 / Black



22 / Grey

Highly resistant technical mesh backrest whose characteristics are:

Thickness: 1.15 mm.

Weight of the fabric (UNI 9213/3): 560 gr/m²

Density of warp threads (UNI 1049/2): 6.1 threads/cm.

Density of weft threads (UNI 1049/2): 5.3 threads/cm.

Warp breaking load (UNI EN ISO 1421): 310 kg/cm.

Weft breaking load (UNI EN ISO 1421): 270 kg/cm.

Elongation at break in warp (UNI EN ISO 1421): 21%.

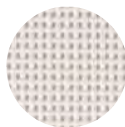
Elongation at break in weft (UNI EN ISO 1421): 15%.

Fatigue resistance: EN 1728/00 / EN 15373/07

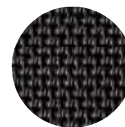
Light resistance: EN ISO 4892-2/06.

Color resistance to rubbing: EN ISO 105-x12/03.

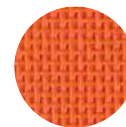
Abrasion resistance: EN ISO 12947-2/98.



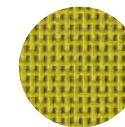
01 / White



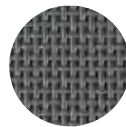
02 / Black



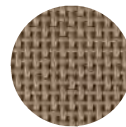
06 / Orange



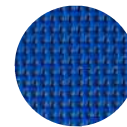
20 / Green



22 / Grey



26 / Brown



27 / Blue



Composition:

70% PVC

30% Polyester

02.

Seat

Injected polypropylene, reinforced with 10% fiber, 100% recyclable and with anti-UV treatment. Optional fireproof treatment (UNE 23727/90 / UNE 23721/90 / UNE 23724).

Optional: Polypropylene inner panel with flexible high density polyurethane foam (hard) 40 kg/m³ (EN ISO 845 / BS.5852/10).



03.

Structure

Round rod in chromium-plated steel, thickness 12-15 microns or painted in epoxy white (RAL 9010), black (RAL 9005) or aluminized grey (RAL 9006) (ISO 2360 / ISO 2409 / ASTM D 2794 / ISO 9227 / ISO 6270), 11 mm diameter.

Semi-transparent anti-slip tops in polymethyl methacrylate (PMMA).

Stackable up to 20 units, 15 if upholstered.



Chrome



RAL 9005



RAL 9010



RAL 9006

04.

Armrests (optional)

Injected polypropylene, reinforced with 10% fiber, 100% recyclable and with anti-UV treatment. Optional fireproof treatment (UNE 23727/90 / UNE 23721/90 / UNE 23724).



SPLASH SKID (ACCESSORIES)

01.

Tablet

Folding paddle in phenolic resin, 10 mm thick. Available in black or white with black border. Must go with a seat with armrests.

02.

Lower grid

Lower grid made of chromed steel, 12 to 15 microns thick. Can be removed without tools.



Chrome

03.

Union kit for seats without armrests



04.

Union kit for seats with armrests and/or paddle



05.

Anti-slip pads

Semi-transparent anti-slip pads in polymethylmethacrylate (PMMA) with removable cap in polymethylmethacrylate (PMMA). Removable cap in polyoxymethylene (POM) with felt adhesive, suitable for delicate floors.



06.

Stacking trolley

Trolley for stacking and transporting up to 40 units.

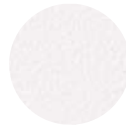


SPLASH STOOL

SKU: DIMOLE-403-S1817

01.

Plastic backrest: Injected polypropylene, reinforced with 10% fiber, 100% recyclable and with anti-UV treatment. Optional fireproof treatment (UNE 23727/90 / UNE 23721/90 / UNE 23724).



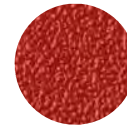
01 / White



02 / Black



16 / Green



17 / Red



22 / Grey

Optional: Polypropylene inner panel with flexible high density polyurethane foam (hard) 40 kg/m³ (EN ISO 845 / BS 5852/10).



Mesh backrest: Injected polypropylene structure, reinforced with 10% fiber, 100% recyclable and with anti-UV treatment. Optional fireproof treatment (UNE 23727/90 / UNE 23721/90 / UNE 23724).



01 / White



02 / Black



22 / Grey

Highly resistant technical mesh backrest whose characteristics are:

Thickness: 1.15 mm.

Weight of the fabric (UNI 9213/3): 560 gr/m²

Density of warp threads (UNI 1049/2): 6.1 threads/cm.

Density of weft threads (UNI 1049/2): 5.3 threads/cm.

Warp breaking load (UNI EN ISO 1421): 310 kg/cm.

Weft breaking load (UNI EN ISO 1421): 270 kg/cm.

Elongation at break in warp (UNI EN ISO 1421): 21%.

Elongation at break in weft (UNI EN ISO 1421): 15%.

Fatigue resistance: EN 1728/00 / EN 15373/07

Light resistance: EN ISO 4892-2/06.

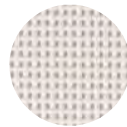
Color resistance to rubbing: EN ISO 105-x12/03.

Abrasion resistance: EN ISO 12947-2/98.

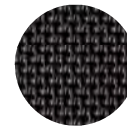
Composition:

70% PVC

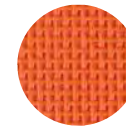
30% Polyester



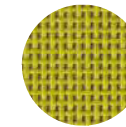
01 / White



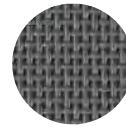
02 / Black



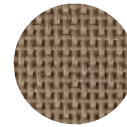
06 / Orange



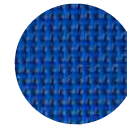
20 / Green



22 / Grey



26 / Brown



27 / Blue



02.

Seat

Injected polypropylene, reinforced with 10% fiber, 100% recyclable and with anti-UV treatment. Optional fireproof treatment (UNE 23727/90 / UNE 23721/90 / UNE 23724).

Optional: Polypropylene inner panel with flexible high density polyurethane foam (hard) 40 kg/m³ (EN ISO 845 / BS 5852/10).



03.

Structure

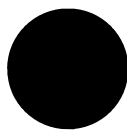
Round rod in chromium-plated steel, thickness 12-15 microns or painted in epoxy white (RAL 9010), black (RAL 9005) or aluminized grey (RAL 9006) (ISO 2360 / ISO 2409 / ASTM D 2794 / ISO 9227 / ISO 6270), 11 mm diameter.

Semi-transparent anti-slip tops in polymethyl methacrylate (PMMA).

Stackable up to 15 units, 10 if upholstered.



Chrome



RAL 9005



RAL 9010



RAL 9006

04.

Armrests (optional)

Injected polypropylene, reinforced with 10% fiber, 100% recyclable and with anti-UV treatment. Optional fireproof treatment (UNE 23727/90 / UNE 23721/90 / UNE 23724).



SPLASH TABLE

01.

Cover or table top
Black or white phenolic top with black border.



The armrests of the cantilever model allow the chair to be placed on the table for better cleaning.



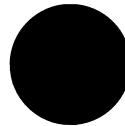
02.

Structure

Round rod in chromium-plated steel, thickness 12-15 microns or painted in epoxy white (RAL 9010), black (RAL 9005) or aluminized grey (RAL 9006) (ISO 2360 / ISO 2409 / ASTM D 2794 / ISO 9227 / ISO 6270), 11 mm diameter. Semi-transparent anti-slip tops in polymethyl methacrylate (PMMA). Stackable up to 10 units.



Chrome



RAL 9005



RAL 9010



RAL 9006

03.

Anti-slip pads (optional)

Semi-transparent anti-slip pads in polymethylmethacrylate (PMMA) with removable cap in polymethylmethacrylate (PMMA). Removable cap in polyoxymethylene (POM) with felt adhesive, suitable for delicate floors.



04.

Trolley for tables
Trolley for stacking and transporting up to 20 units.

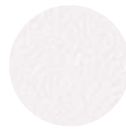


SPLASH BENCH

SKU: DIMOLE-402-S1834

01.

Plastic backrest: Injected polypropylene, reinforced with 10% fiber, 100% recyclable and with anti-UV treatment. Optional fireproof treatment (UNE 23727/90 / UNE 23721/90 / UNE 23724).



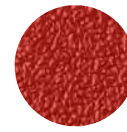
01 / White



02 / Black



16 / Green



17 / Red



22 / Grey

Optional: Polypropylene inner panel with flexible high density polyurethane foam (hard) 40 kg/m³ (EN ISO 845 / BS 5852/10).



Mesh backrest: Injected polypropylene structure, reinforced with 10% fiber, 100% recyclable and with anti-UV treatment. Optional fireproof treatment (UNE 23727/90 / UNE 23721/90 / UNE 23724).

Highly resistant technical mesh backrest whose characteristics are:

Thickness: 1.15 mm.

Weight of the fabric (UNI 9213/3): 560 gr/m²

Density of warp threads (UNI 1049/2): 6.1 threads/cm.

Density of weft threads (UNI 1049/2): 5.3 threads/cm.

Warp breaking load (UNI EN ISO 1421): 310 kg/cm.

Weft breaking load (UNI EN ISO 1421): 270 kg/cm.

Elongation at break in warp (UNI EN ISO 1421): 21%.

Elongation at break in weft (UNI EN ISO 1421): 15%.

Fatigue resistance: EN 1728/00 / EN 15373/07

Light resistance: EN ISO 4892-2/06.

Color resistance to rubbing: EN ISO 105-x12/03.

Abrasion resistance: EN ISO 12947-2/98.

Composition: 70% PVC / 30% Polyester



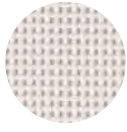
01 / White



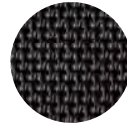
02 / Black



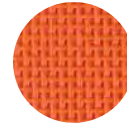
22 / Grey



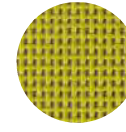
01 / White



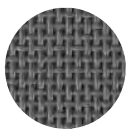
02 / Black



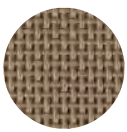
06 / Orange



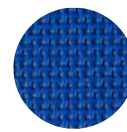
20 / Green



22 / Grey



26 / Brown



27 / Blue

02.

Seat

Injected polypropylene, reinforced with 10% fiber, 100% recyclable and with anti-UV treatment.

Optional fireproof treatment (UNE 23727/90 / UNE 23721/90 / UNE 23724).

Optional: Polypropylene inner panel with flexible high density polyurethane foam (hard) 40 kg/m³ (EN ISO 845 / BS 5852/10).



03.

Structure

Available in 2, 3, 4 or 5 seats. For benches with three or more seats, it is possible to replace one of the seats with a side table in phenolic graphite cardboard with black edge, 40 x 40 cm and 10 mm thick. For other finishes, consult quantities.

Central bar of 100 x 50 mm and 3 mm thick, painted in black epoxy (RAL 9005). 11 mm diameter steel rod base, chrome plated, 12 to 15 microns thick. Nylon anti-slip pads.



01.

Chargeur USB

Un accessoire pour tous ceux qui, vivant le rythme effréné de la journée, ont besoin de recharger leurs appareils confortablement assis et de mieux attendre. Sa conception cylindrique lui permet de se différencier facilement de la poutre de section rectangulaire à laquelle il est fixé. Il dispose de deux entrées USB pour charger les appareils mobiles.



02.

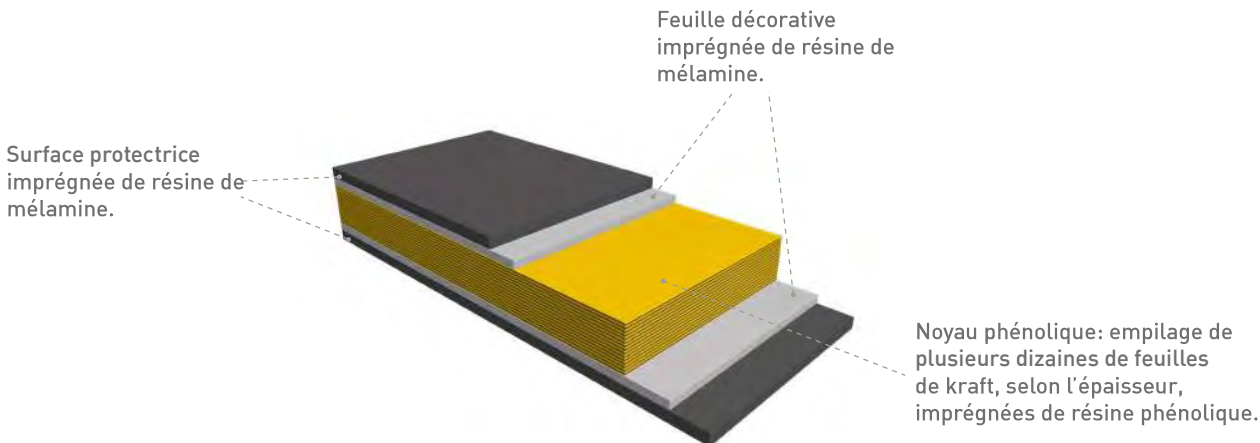
Phénolique (table/table siège sur poutre/table d'écriture)

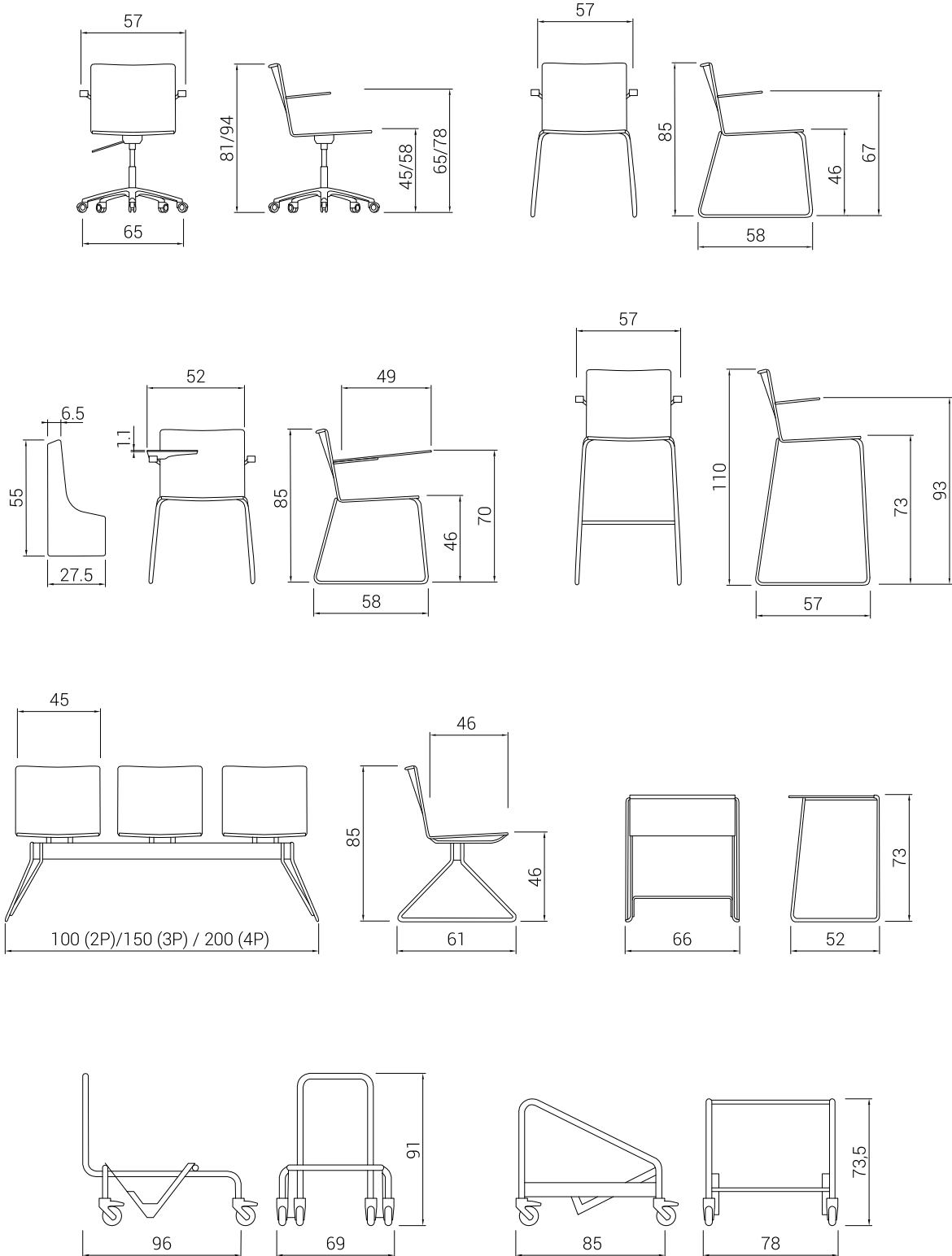
Propriétés du phénolique:

- Résistance aux rayures.
- Résistance à la chaleur.
- Nettoyage facile.
- Résistance aux produits chimiques et aux produits ménagers.
- Résistance aux fissures.
- Résistance à l'impact.
- Résistance à l'abrasion
- Hygiène alimentaire.
- Résistance des couleurs à la lumière artificielle.

Test ayant passé le phénolique:

- ISO 4586 Epaisseur / Résistance à l'eau des papiers décoratifs / Absorption d'eau / Stabilité dimensionnelle à haute température / Résistance à la vapeur.
- ISO 1183 Densité.
- DIN 52612 Conductivité thermique.
- ASTM D 785 Dureté Rockwell.
- ISO 178 Résistance à la flexion / Module d'élasticité.
- ASTM D 256 Résistance aux chocs.
- ASTM D 732 Résistance au cisaillement
- ISO 604 Résistance à la compression.





01

BALI (Go1)



02

POLYESTER (Go1)



03

GOYA (Go1)



04

TOUCH LEATHER (Go1)



05

COMBI (Go1)



06

OCEAN (Go2)



07

ELASTIKA FR (Go2)



08

ORUGA (Go2)



09

NILO (Go2)



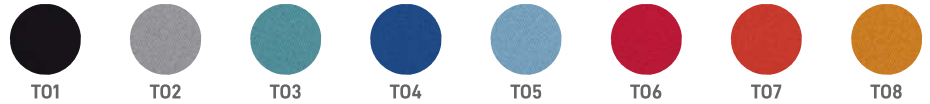
10

MADISON (Go2)



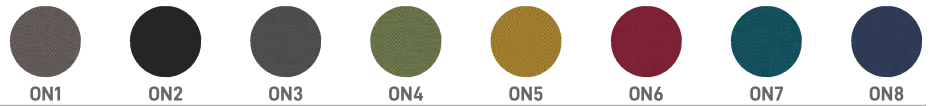
11

TONAL (Go2)



12

ONE (Go2)



13

VALENCIA (Go3)



14

DEKORA (Go3)



15

FELICITY (Go3)



16

LEATHER (Go4)



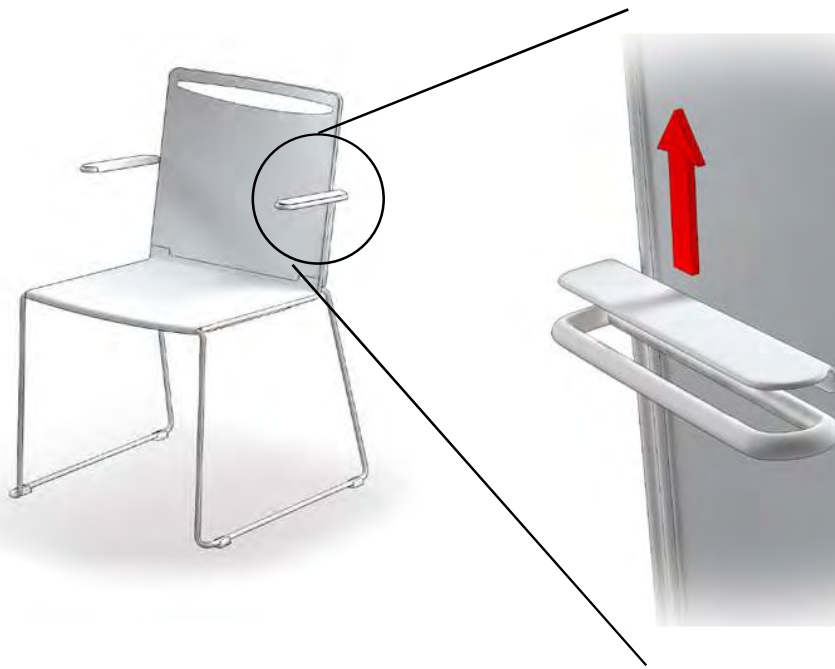
01. Writing tablet



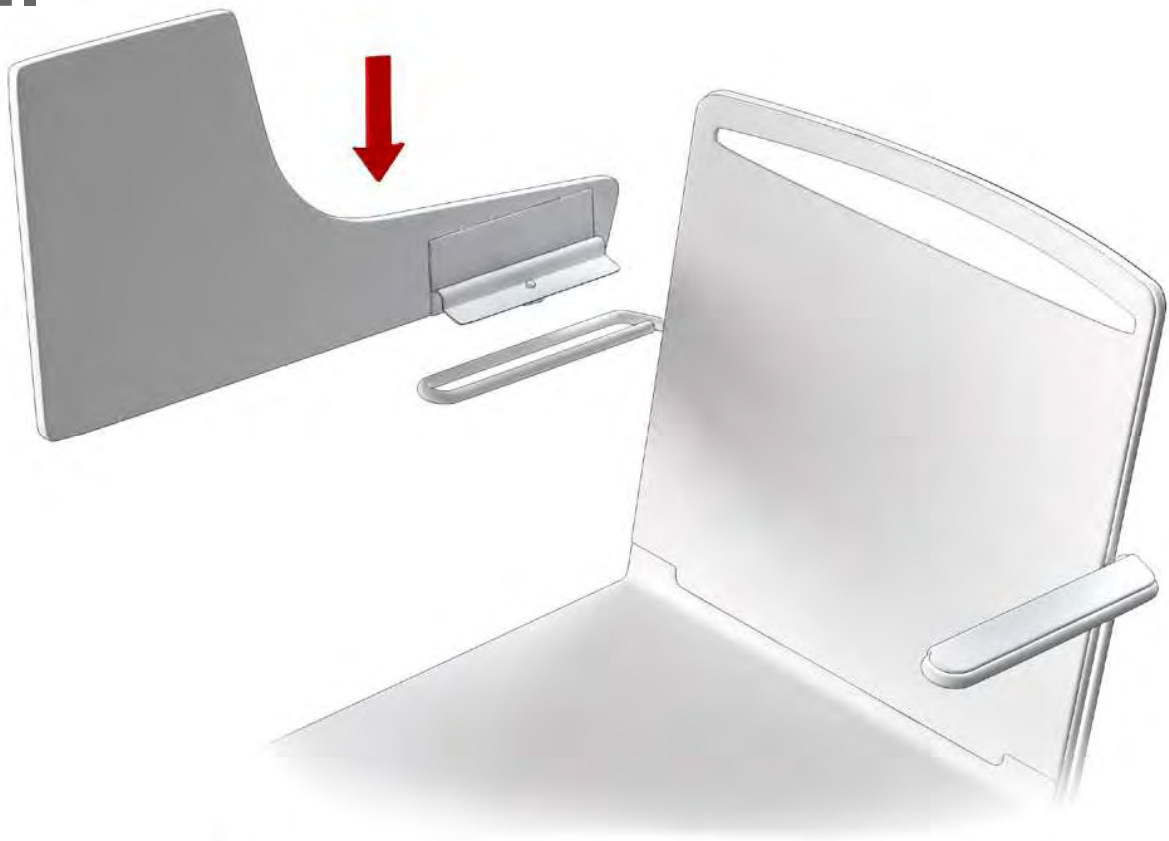
In the position of use, the writing tablet rotates 110° vertically.

SPLASH
ASSEMBLY INSTRUCTIONS
WRITING TABLET

1.

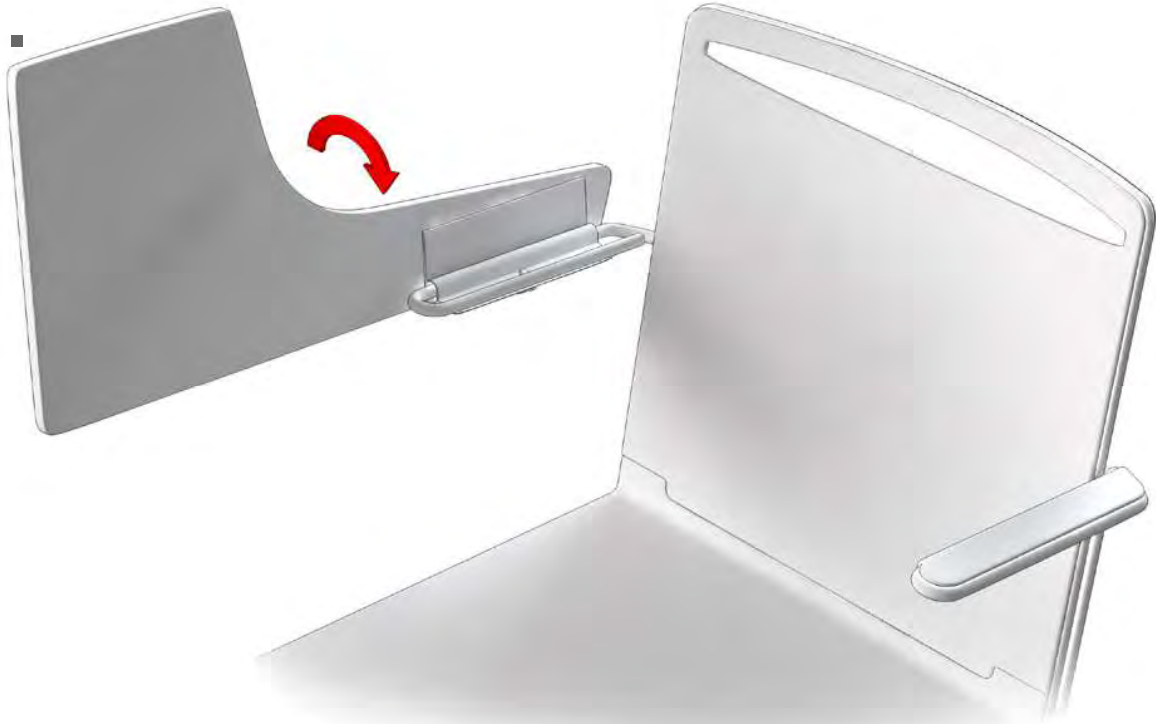


2.

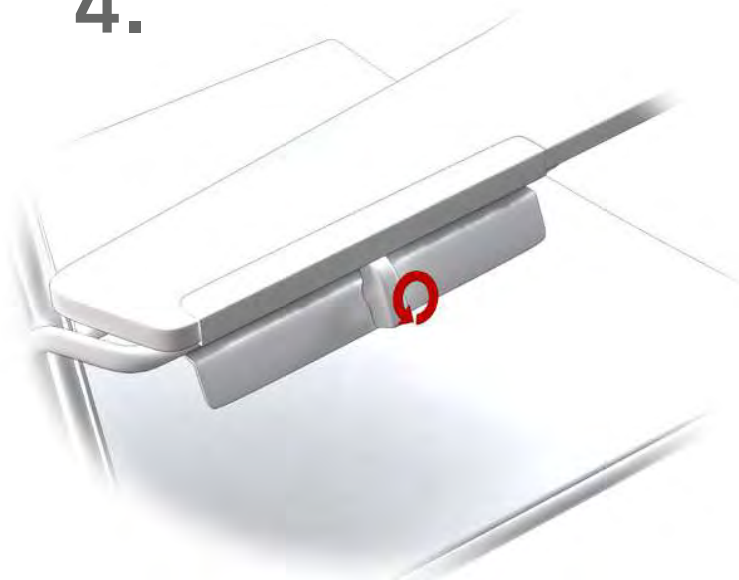


SPLASH
ASSEMBLY INSTRUCTIONS
WRITING TABLET

3.



4.



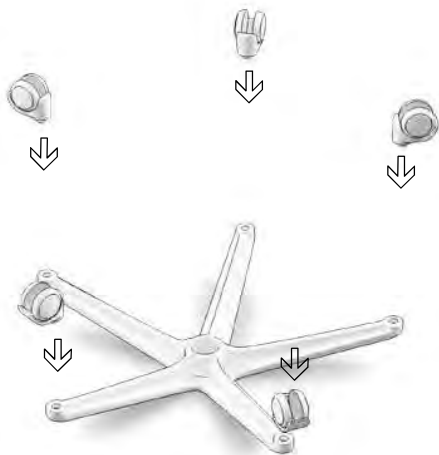
5.



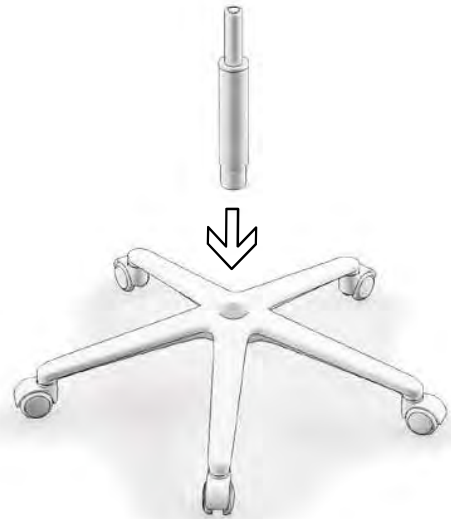
SPLASH ASSEMBLY INSTRUCTIONS SWIVEL CHAIR



1.



2.

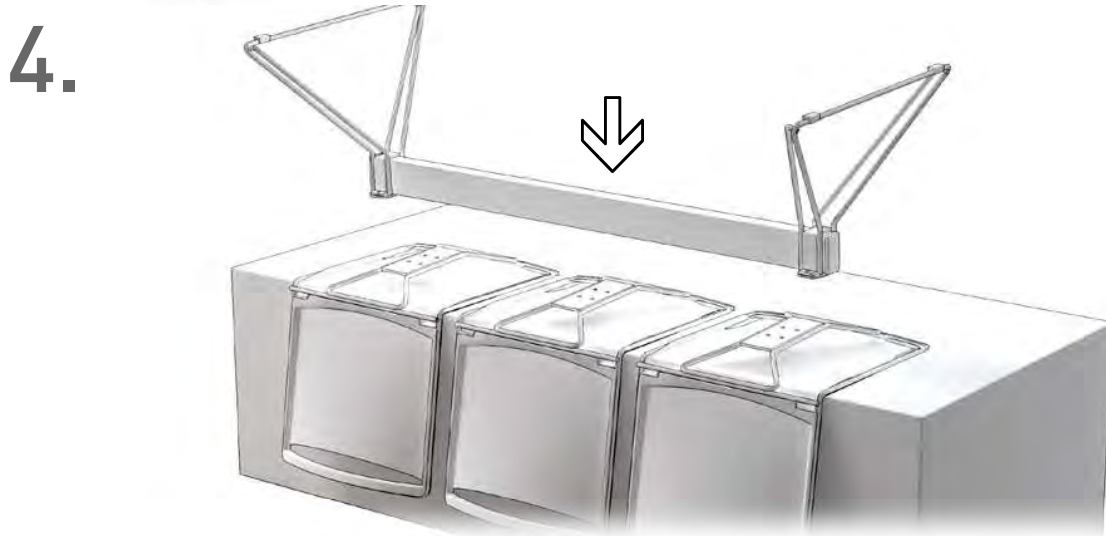
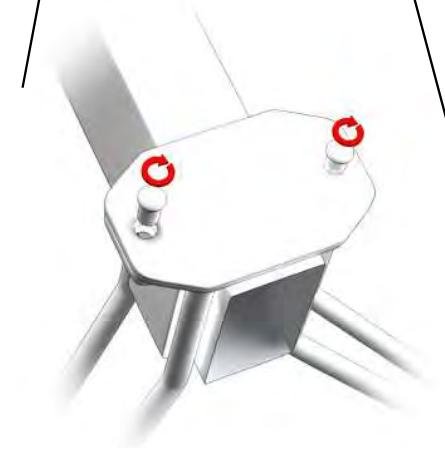
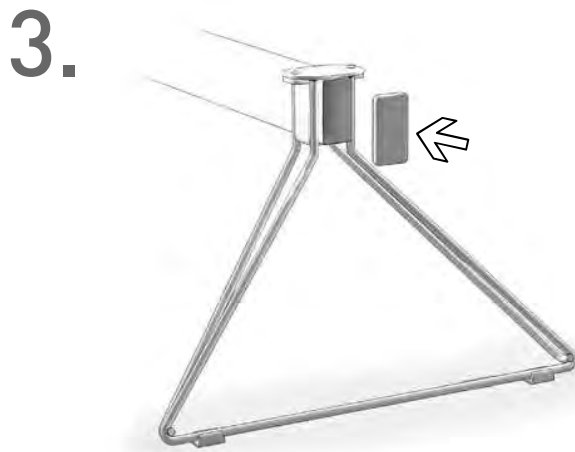
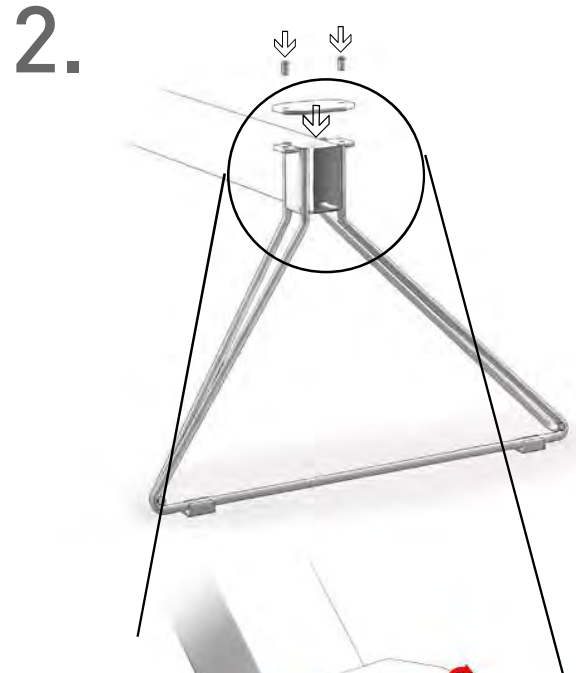


3.

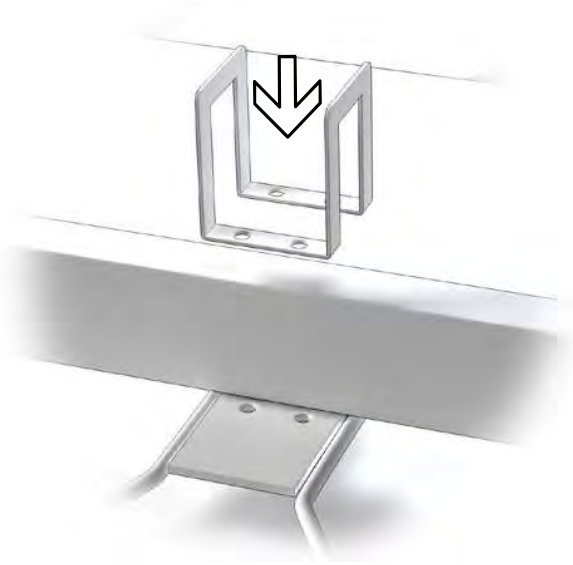


SPLASH ASSEMBLY INSTRUCTIONS BENCH

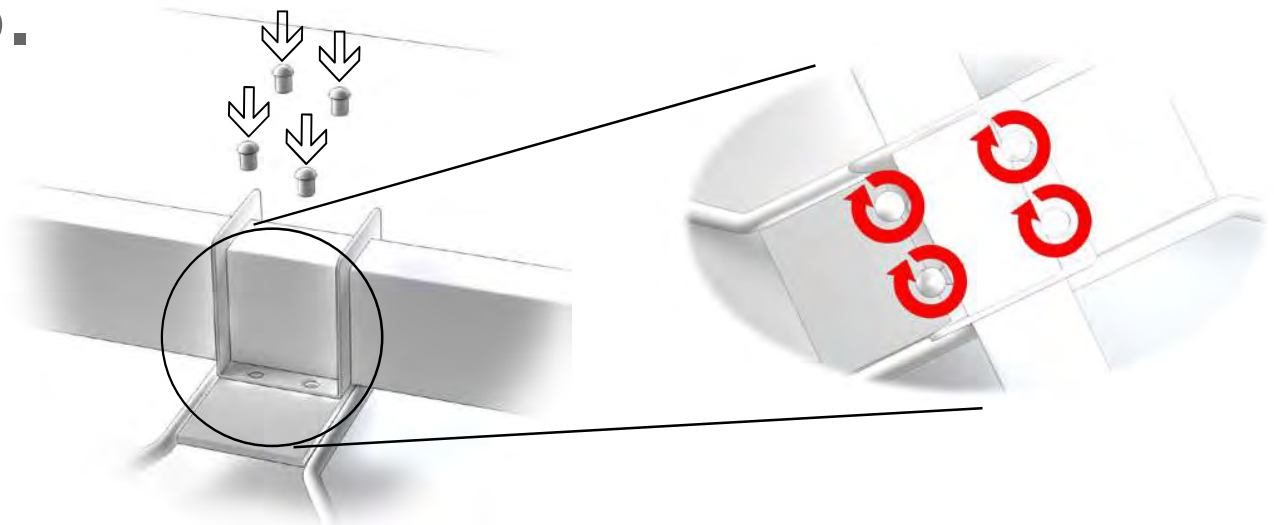
- 8x 
- 2x 
- 2x 
- 1x 
- 3x 
- 12x 
- 2x 
- 3x 



5.



6.



7.



SPLASH ASSEMBLY INSTRUCTIONS TABLE

