

Osaka

Family

Sofa / Bench / System

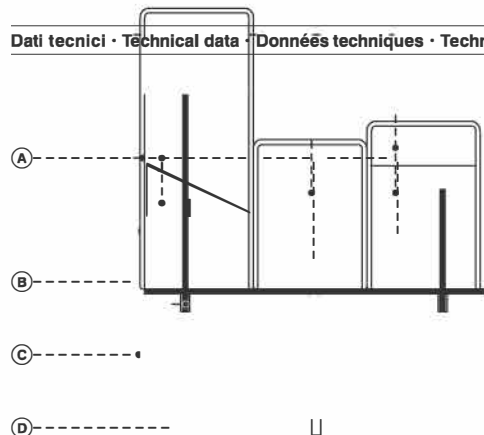
Designer

Pierre Paulin / 1967 / 2013

SKU: LAMONA-402-8801
SKU: LAMONA-402-8802
SKU: LAMONA-402-8803
SKU: LAMONA-402-8804
SKU: LAMONA-402-8805



Dati tecnici · Technical data · Données techniques · Technische Angaben



A. Poliuretano espanso ignifugo indeformabile a quote differenziate
B. Fibra di poliestere
C. Rivestimento sfoderabile in tessuti stretch selezionati
D. Acciaio

A. Flame-retardant undeformable polyurethane foam of different densities
B. Polyester fibers
C. Removable upholstery in selected stretch fabrics
D. Steel

A. Mousse polyuréthane expansé ignifuge indéformable à épaisseurs différenciées
B. Fibre de polyester
C. Revêtement déhoussable en stretch tissus sélectionnés
D. Acier

A. Feuerfester formbeständige Polyurethanschaum in unterschiedlicher Dichte
B. Polyester
C. Stretchstoffbezug abziehbar in besonderer Stoffauswahl
D. Stahl

Note · Notes · Annotation · Anmerkung

• Infinite soluzioni semplicemente affiancando tra di loro i suoi elementi dritti e curvi.

• Endless seating solutions can be created simply by joining together its straight and curved modules.

• Solutions infinies en associant simplement entre eux ses éléments droits et incurvés.

• Durch die Kombination von verschiedenen geraden und kurvigen Elementen können unzählige Lösungen realisiert werden.

Finiture · Finishes · Finitions · Ausführungen



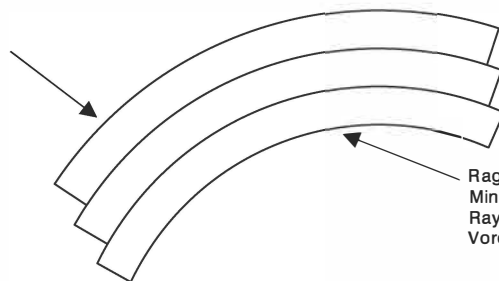
Nero (RAL 9005)
 Black (RAL 9005)
 Noir (RAL 9005)
 Schwarz (RAL 9005)

Unici rivestimenti possibili · Available covers only · Seul revêtements possible · Einzig mögliche Bezüge

- cat. B STRETCHY
- cat. maxi MOSAIC 2
- cat. maxi UNIFORM MÉLANGE

Raggio minimo · Minimum radius · Rayon minimum · Minimum Radius

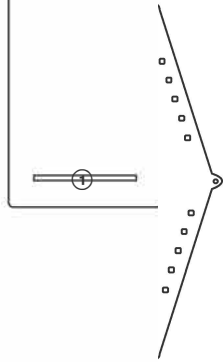
Raggio posteriore minimo cm. 258
 Minimum back radius cm. 258
 Rayon arrière minimum cm. 258
 Hinterradius cm. 258



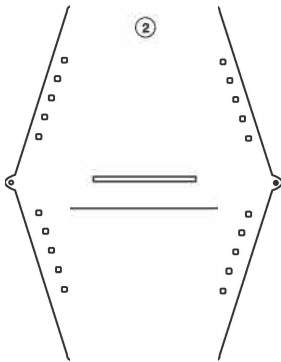
Raggio frontale minimo cm. 180
 Minimum front radius cm. 180
 Rayon frontale minimum cm. 180
 Vorderradius cm. 180

Componenti base metallo · Metal frame components · Composants piètement métal · Metallgestell Bestandteile

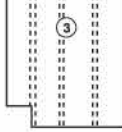
Base laterale
Side base
Piètement côté
Seitengestell



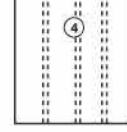
Base centrale
Central base
Piètement central
Zentralgestell



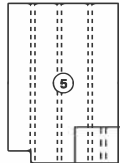
Supporto schienale laterale
Back side support
Support dos côté
Seiten-Rückenstütze



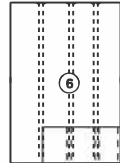
Supporto schienale centrale
Back central support
Support dos central
Zentral-Rückenstütze



Supporto sedile laterale
Seat side support
Support assise côté
Seiten-Sitzflächestütze



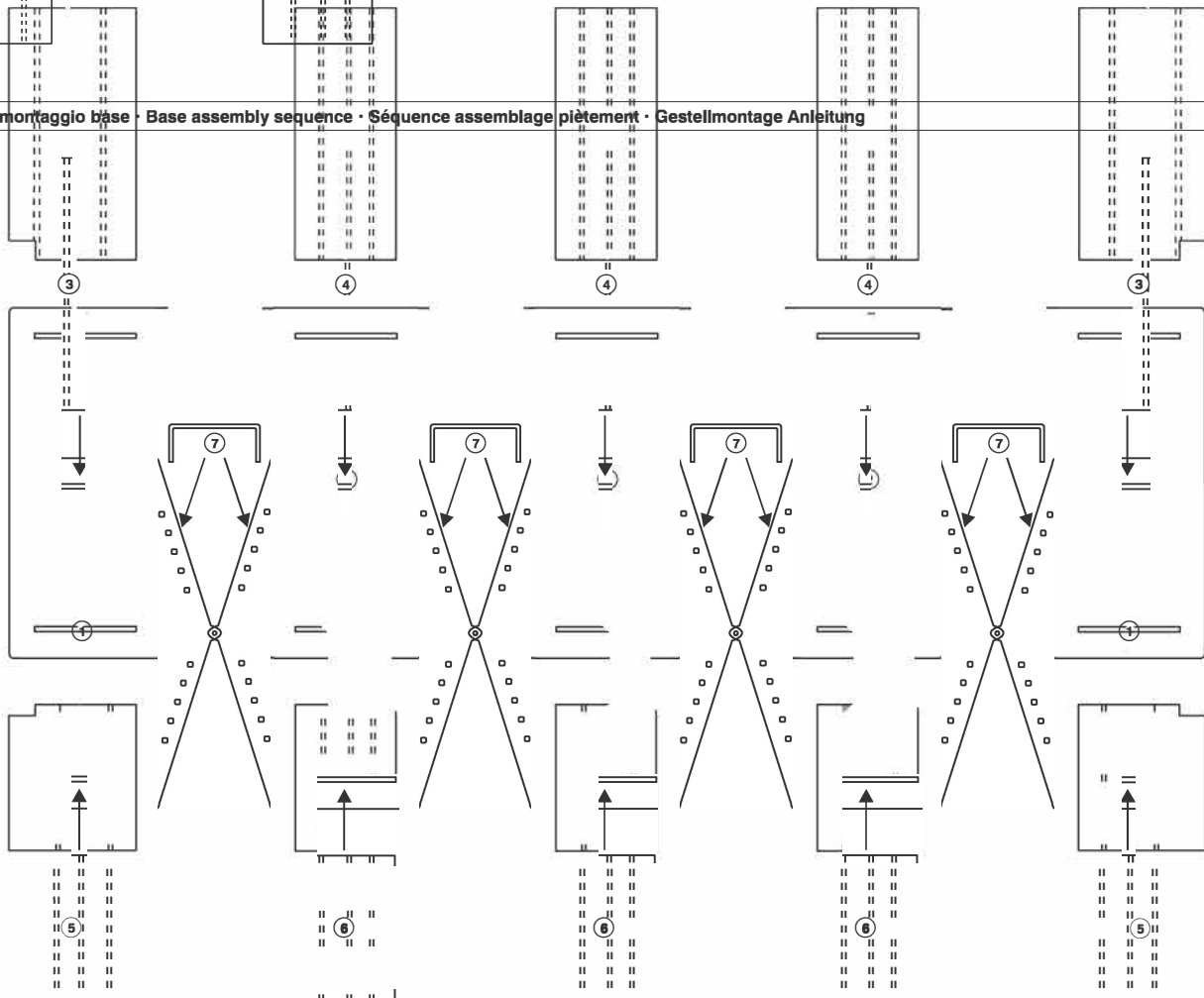
Supporto sedile centrale
Seat central support
Support assise central
Zentral-Sitzflächestütze



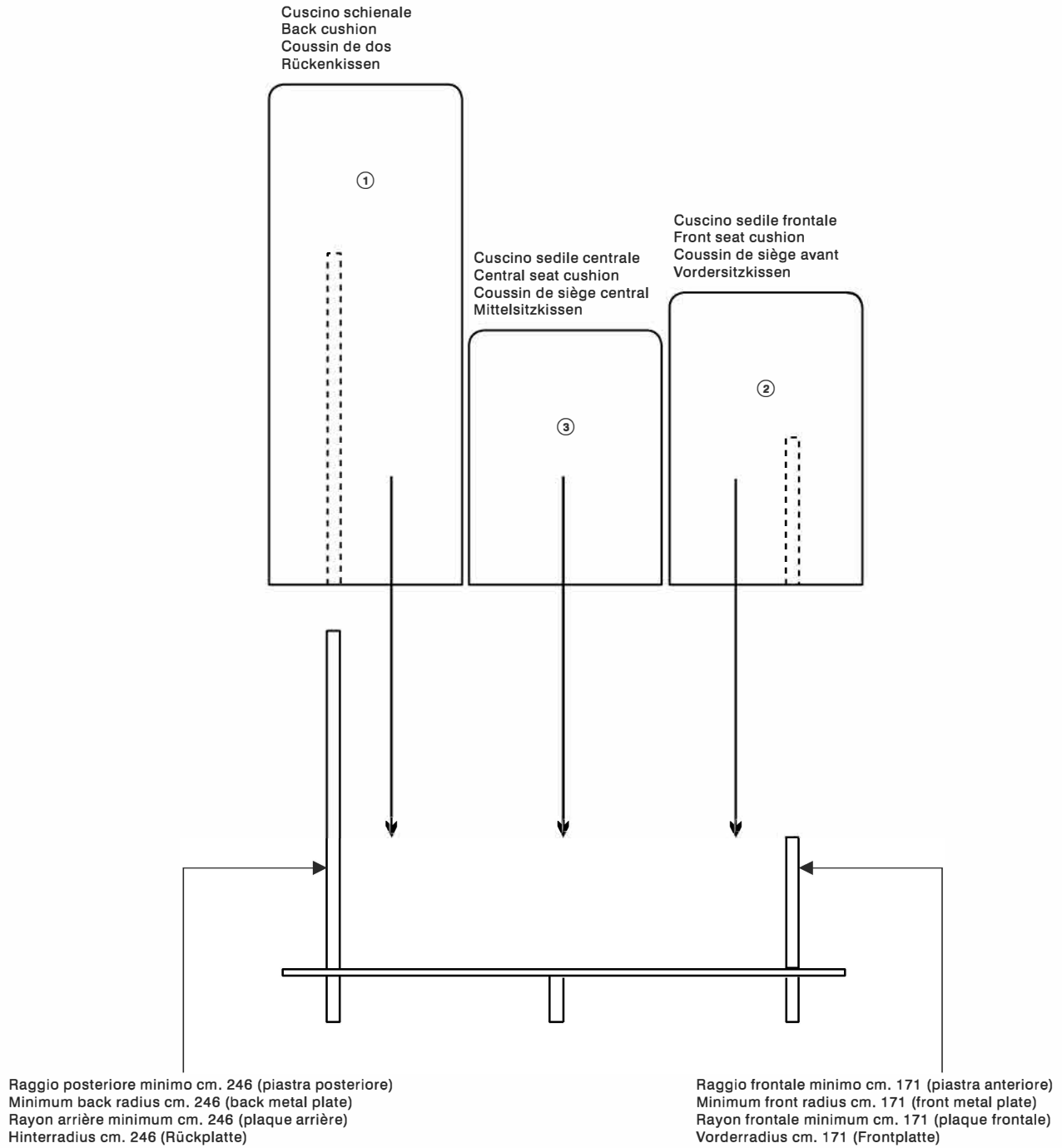
Gancio connessione basi
Clip connection bases
Cavalier de maintien
Verbindungshaken für Gestell



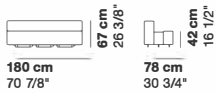
Sequenza montaggio base · Base assembly sequence · Séquence assemblage piètement · Gestellmontage Anleitung



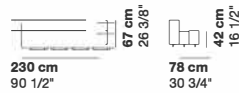
Sequenza inserimento cuscini · Cushion elements assembly sequence · Séquence d'insertion coussins · Einfügungsverfahren der Kissen



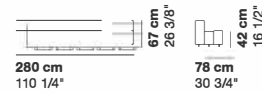
cod. 8801 / sofa 180



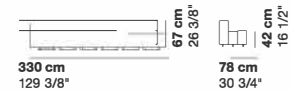
cod. 8802 / sofa 230



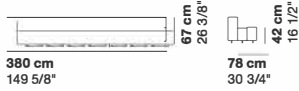
cod. 8803 / sofa 280



cod. 8804 / sofa 330



cod. 8805 / sofa 380



cod. 8806 / sofa 430



cod. 8807 / sofa 480



cod. 8808 / sofa 530



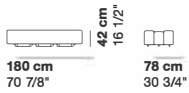
cod. 8809 / sofa 580



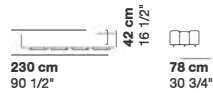
cod. 8810 / sofa 630



cod. 8811 / bench 180



cod. 8812 / bench 230



cod. 8813 / bench 280



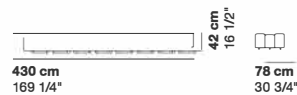
cod. 8814 / bench 330



cod. 8815 / bench 380



cod. 8816 / bench 430



cod. 8817 / bench 480



cod. 8818 / bench 530



cod. 8819 / bench 580



cod. 8820 / bench 630

