

O-RIZON D 006 COFFEE TABLE

SKU:ALMO2-601-O-RIZON D 006 COFFEE TABLE

47.2" W x 47.2" D x 12.6" H

39.4" W x 39.4" D x 12.6" H

55.1" W x 31.5" D x 12.6" H

51.2" W x 29.5" D x 12.6" H

The o-rizon d 006 low table comes in different sizes with a shape of rectangular or square top. The top comes in different materials and the base is metallic.

This product is offered in other finishes. Contact us for dimensions and finishes customizations.

MATERIALS:

Top lacquer, or veneer oak, or veneer walnut - Metal base in epoxy powder.

Top in veneer smoked eucalyptus - Metal base in epoxy powder.

Top ceramic maxfine - Metal base in epoxy powder.

Top glass - Metal base in epoxy powder.

Top marble - Metal base in epoxy powder.

Top glossy lacquer - Metal base in epoxy powder.



woods



oak 11
natural oak



oak 12
light oak



oak 13
black oak



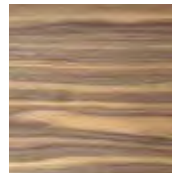
oak 14
light chocolate oak



oak 15
dark olive grey oak



american walnut

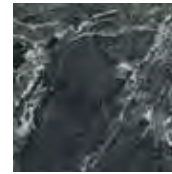


walnut canaletto



veneer
smoked eucalyptus

ceramic maxfine



aosta green marble



arabescato



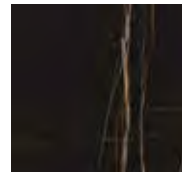
calacatta oro



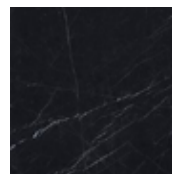
onice alabastrino



onice avorio



sahara noir



black marquina



calacatta



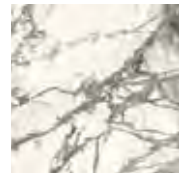
white calacatta



gem pearl

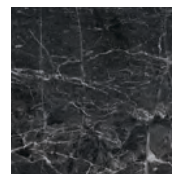


stone grey

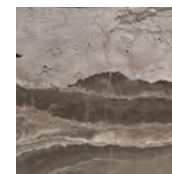


calacatta grey

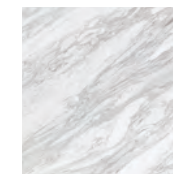
marbles



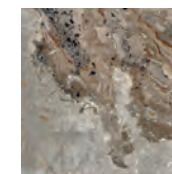
argus vein



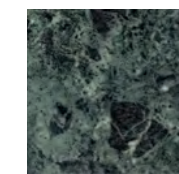
olympus grey



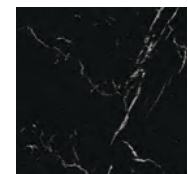
volakas



mycenae



tinos marble

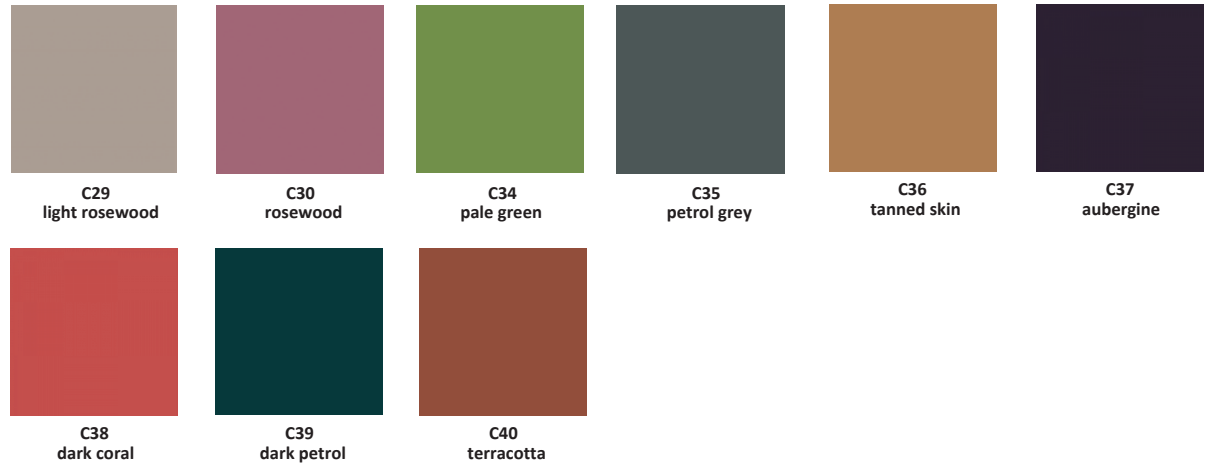


nero marquina

lacquers

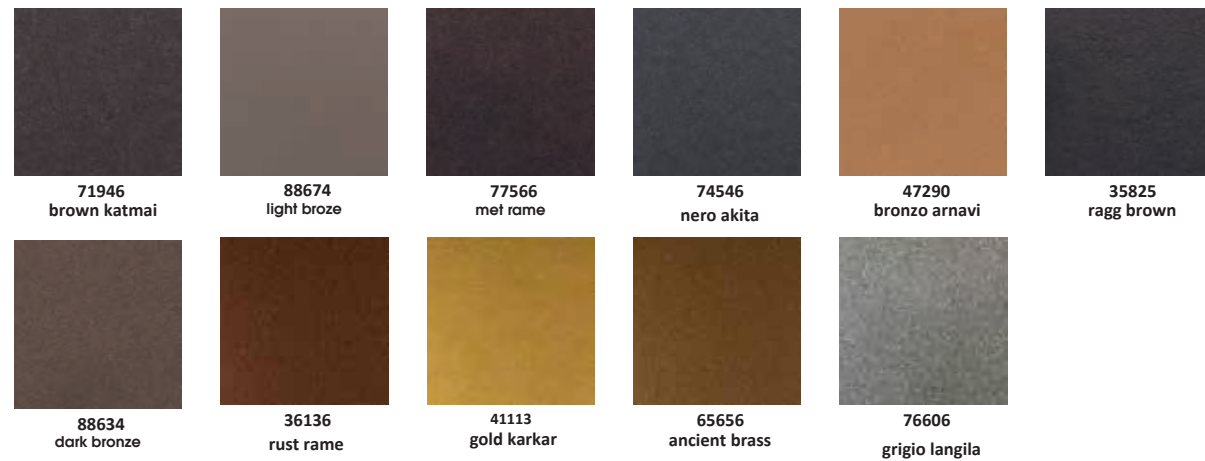
					
C1 total black	C20 anthracite	C6 dark olive gray	C21 olive grey	C27 earth brown	C11 olive brown
					
C25 desert brown	C3 ash gray	C7 military green	C9 mint	C12 hazelnut	C26 nougat
					
C13 light pistachio	C14 cream	C5 powder	C24 white	C10 sea blue	C23 dark blue
					
C19 orange	C33 mustard yellow	C15 gold yellow	C22 cherry red	C31 ruby red	C32 purple

lacquers

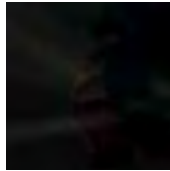


epoxy powder

only for metal parts



glasses



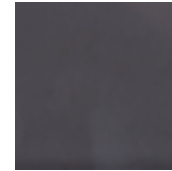
lacobel black



g1: transparent



g2: bronze



g5: fume