



O-RIZON B 009 HIGHBOARD

SKU: ALMO2-501-O-RIZON B 009 HIGHBOARD

39.4" W x 19.7" D x 57.5" H

Highboard in one size, with two big doors and one drop door. Horizontal lines around the cabinet and metallic base.

This product is offered in other finishes. Contact us for dimensions and finishes customizations

MATERIALS:

Cabinet and top lacquered or veneer oak or veneer walnut- Metal base in epoxy powder.

Cabinet and top veneer smoked eucalyptus - Metal base in epoxy powder.



lacquers

					
C1 total black	C20 anthracite	C6 dark olive gray	C21 olive grey	C27 earth brown	C11 olive brown
					
C25 desert brown	C3 ash gray	C7 military green	C9 mint	C12 hazelnut	C26 nougat
					
C13 light pistachio	C14 cream	C5 powder	C24 white	C10 sea blue	C23 dark blue
					
C19 orange	C33 mustard yellow	C15 gold yellow	C22 cherry red	C31 ruby red	C32 purple

lacquers



C29
light rosewood



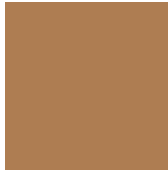
C30
rosewood



C34
pale green



C35
petrol grey



C36
tanned skin



C37
aubergine



C38
dark coral



C39
dark petrol



C40
terracotta

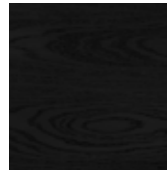
woods



oak 11
natural oak



oak 12
light oak



oak 13
black oak



oak 14
light chocolate oak



oak 15
dark olive grey oak



american walnut



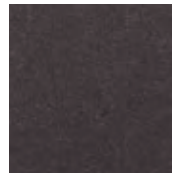
walnut canaletto



veneer
smoked eucalyptus

epoxy powder

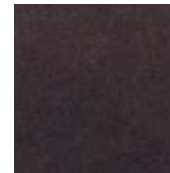
only for metal parts



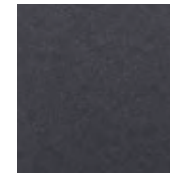
71946
brown katmai



88674
light broze



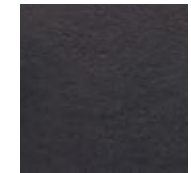
77566
mel rame



74546
nero akita



47290
bronzo arnavi



35825
ragg brown



88634
dark bronze



36136
rust rame



41113
gold karkar



65656
ancient brass



76606
grigio langila