

O-RIZON A 006 COFFEE TABLE

35.4" Ø x 11" H

47.2" Ø x 11" H

The o-rizon low table has a round top in different materials and a metallic base.

This product is offered in other finishes. Contact us for dimensions and finishes customizations .

MATERIALS:

Top lacquer, or veneer oak, or veneer walnut - Metal base in epoxy powder.

Top in veneer smoked eucalyptus - Metal base in epoxy powder.

Top ceramic maxfine - Metal base in epoxy powder.

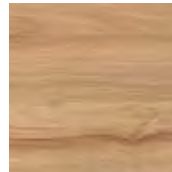
Top glass - Metal base in epoxy powder.

Top marble - Metal base in epoxy powder.

Top glossy lacquer - Metal base in epoxy powder.



woods



oak 11
natural oak



oak 12
light oak



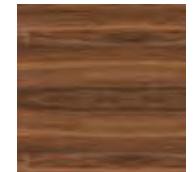
oak 13
black oak



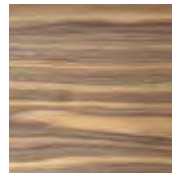
oak 14
light chocolate oak



oak 15
dark olive grey oak



american walnut

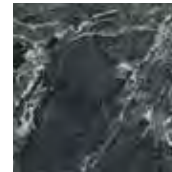


walnut canaletto



veneer
smoked eucalyptus

ceramic maxfine



aosta green marble



arabescato



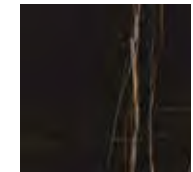
calacatta oro



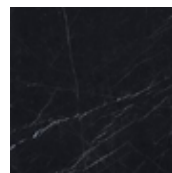
onice alabastrino



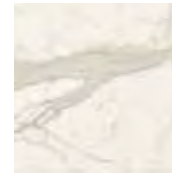
onice avorio



sahara noir



black marquina



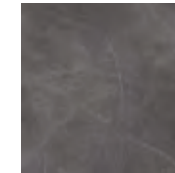
calacatta



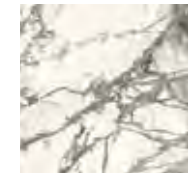
white calacatta



gem pearl

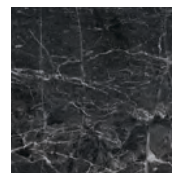


stone grey

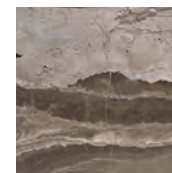


calacatta grey

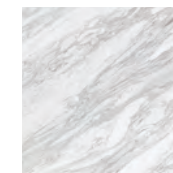
marbles



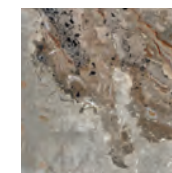
argus vein



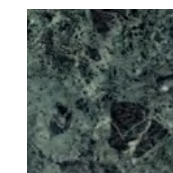
olympus grey



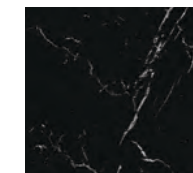
volakas



mycenae



tinos marble

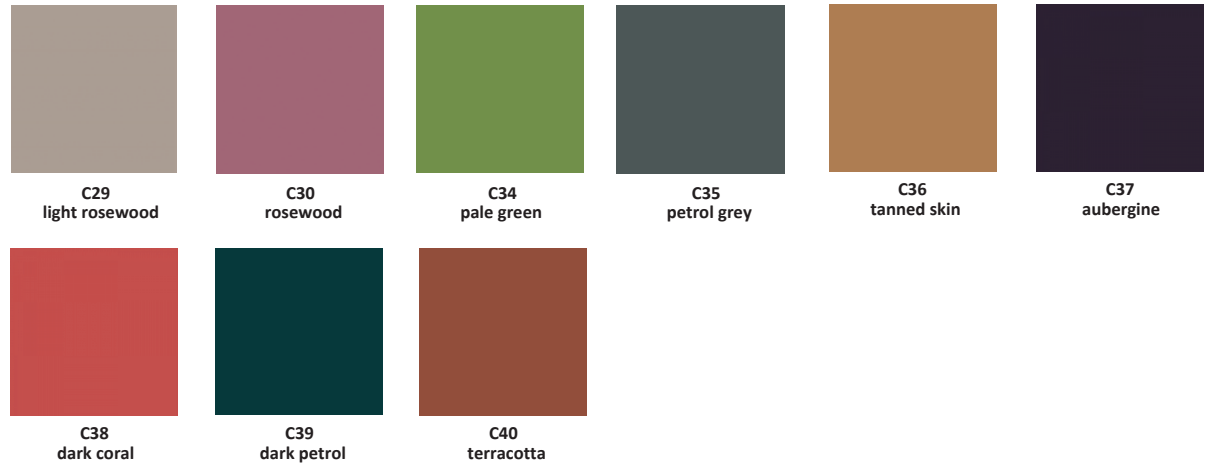


nero marquina

lacquers

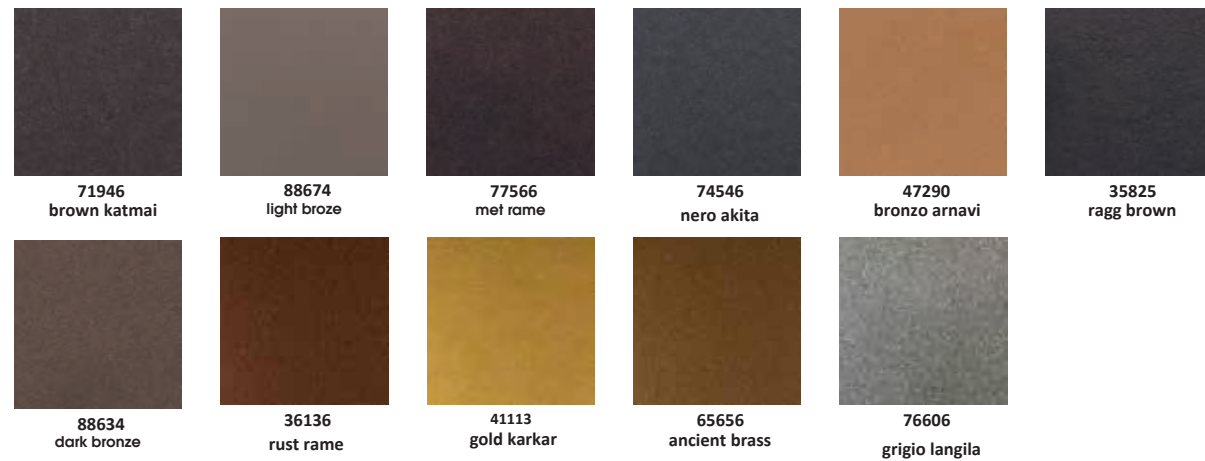
| | | | | | |
|---|---|---|---|---|---|
|  |  |  |  |  |  |
| C1 total black | C20 anthracite | C6 dark olive gray | C21 olive grey | C27 earth brown | C11 olive brown |
|  |  |  |  |  |  |
| C25 desert brown | C3 ash gray | C7 military green | C9 mint | C12 hazelnut | C26 nougat |
|  |  |  |  |  |  |
| C13 light pistachio | C14 cream | C5 powder | C24 white | C10 sea blue | C23 dark blue |
|  |  |  |  |  |  |
| C19 orange | C33 mustard yellow | C15 gold yellow | C22 cherry red | C31 ruby red | C32 purple |

lacquers

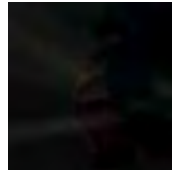


epoxy powder

only for metal parts



glasses



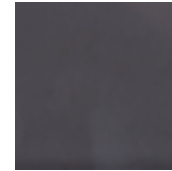
lacobel black



g1: transparent



g2: bronze



g5: fume