

NAKED

SKU: MAMOBO-402-Naked Single Sofa
 SKU: MAMOBO-402-Naked Modular Sofa



NAKED
single modular couch



NAKED
side modular couch w/ 165cm



NAKED
side modular couch w/ 185cm



NAKED
corner modular couch



NAKED
middle modular couch

TECHNICAL CHARACTERISTICS

Frame: constructed in solid wood with 90 mm elastic webbing

Fixed cover on the seat and removable cover on the back

Structure foam: 100% PU HR 40 kg

Seat foam: 100% PU HR 25 kg

Fire retardent foam is available upon request

Feet: beech wood or mdf lacquered

Firmness: soft ○ ● ○ ○ ○ firm

Handmade in Portugal

AS PICTURED

Paris mousse and natural beech base

CLIENT'S OWN MATERIAL CONSUMPTION

Naked single: **Naked 165cm:** **Naked 185cm:**

all: 8,5 m

all: 7 m

all: 7,5 m

Naked corner: **Naked middle:**

all: 9 m

all: 6 m

PRODUCT OPTIONS

Upholstery: available in several fabrics and leather

Base: available in beech 056-0, beech 056-1, beech 056-2, beech 056-5, natural oak or white, ivory or black lacquered woods

PACKAGING

Weight item:

Naked single: **Naked 165cm:** **Naked 185cm:**

121 lb | 55 kg

112 lb | 51 kg

141 lb | 64 kg

Naked corner: **Naked middle:**

139 lb | 63 kg

115 lb | 52 kg

Weight packaging:

Naked single: **Naked 165cm:** **Naked 185cm:**

132 lb | 60 kg

139 lb | 63 kg

168 lb | 76 kg

Naked corner: **Naked middle:**

165 lb | 75 kg

141lb | 64 kg

Packaging type: cardboard and pallet

Packaging dimensions with pallet:

Naked single: **Naked 165cm:** **Naked 185cm:**

248x83x137 cm

170x83x120 cm

190x83x137 cm

Naked corner: **Naked middle:**

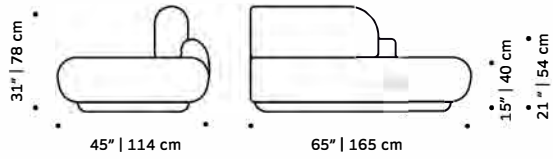
151x91x151 cm

145x83x120 cm

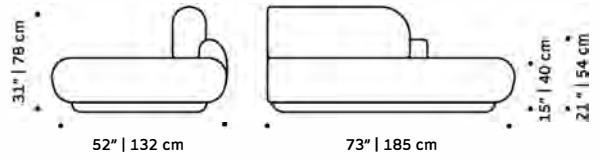
Number of parcels: 1 per box

DIMENSIONS

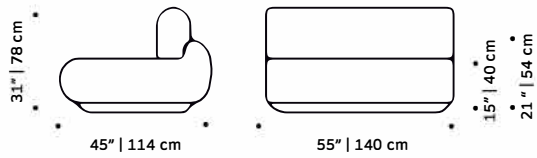
NAKED SIDE
W/165CM
modular couch



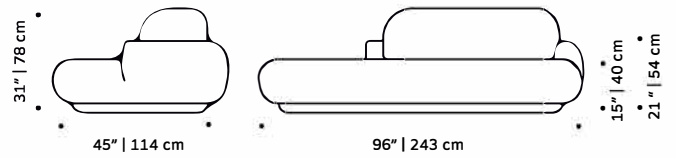
NAKED SIDE
W/185CM
modular couch



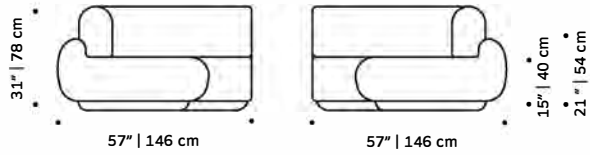
NAKED MIDDLE
modular couch



NAKED SINGLE
modular couch



NAKED CORNER
modular couch



ASTON VINYL Indoor/Outdoor



Aston 813 Linen



Aston 507 Rich Ivory



Aston 805 Cream



Aston 300 Gold



Aston 905 Dove



Aston 952 Platinum



Aston 238 Citrus



Aston 823 Chablis



Aston 837 Stone



Aston 314 Mustard



Aston 801 Tan



Aston 815 Buff



Aston 817 Chestnut



Aston 703 Mink



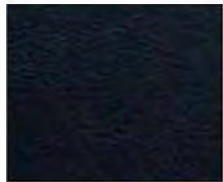
Aston 814 Espresso



Aston 807 Mushroom



Aston 203 Emerald



Aston 116 Navy



Aston 105 Indigo



Aston 953 Gunmetal



Aston 904 Pewter



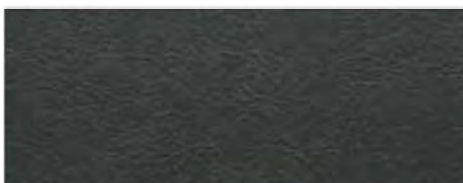
Aston 919 Zinc



Aston 954 Graphite



Aston 900 Black



Aston 906 Ash

ASTON VINYL Indoor/Outdoor



Aston 220 Light Green



Aston 204 Moss



Aston 233 Pistachio



Aston 226 Lime



Aston 228 Bottle Green



Aston 506 Mist



Aston 253 Cardamom



Aston 205 Sage Green



Aston 110 Pacific



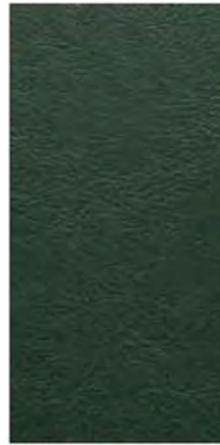
Aston 219 Seafoam



Aston 100 Blue



Aston 134 Sky



Aston 215 Elm



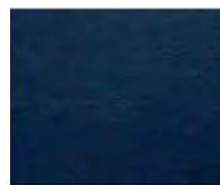
Aston 251 Eau de Nil



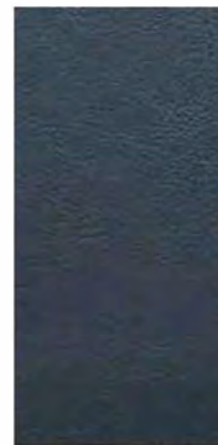
Aston 131 Azure



Aston 151 Teal



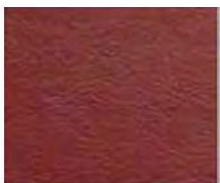
Aston 192 Ink



Aston 108 Delph



Aston 613 Pale Pink



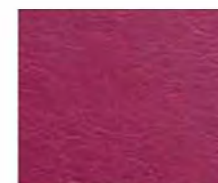
Aston 414 Wine



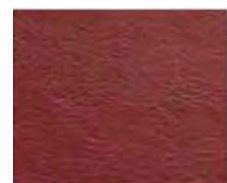
Aston 412 Purple



Aston 213 Aubergine



Aston 409 Magenta



Aston 414 Wine

ASTON VINYL Indoor/Outdoor



Aston 414 Wine



Aston 412 Purple



Aston 213 Aubergine



Aston 409 Magenta



Aston 414 Wine



Aston 618 Blush



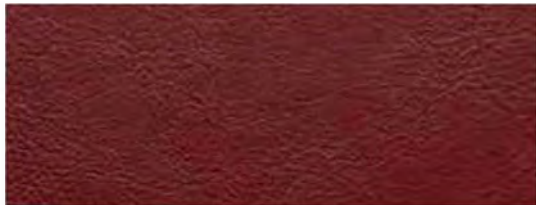
Aston 400 Red



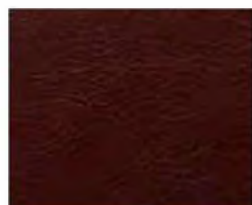
Aston 700 Brown



Aston 401 Amber



Aston 444 Cherry



Aston 407 Burgundy



Aston 408 Terracotta



Aston 877 Oyster



Upholstery



Flame Retardant



Abrasion



Waterproof



Outdoor & Indoor



Anti-Microbial



Stain Resistant



Phthalate Free

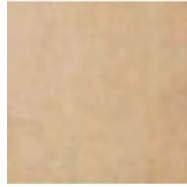


Heavy Metals Free

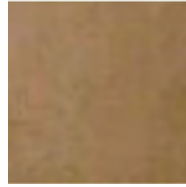
PROJECT VELVET WATER REPELLENT/PROJECT FR



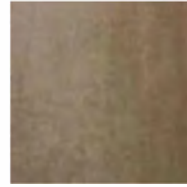
01 Ivory



02 Sand



03 Beige



04 Taupe



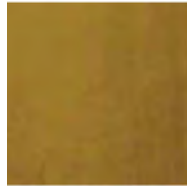
05 Chocolate



06 Curry



07 Pure Yellow



08 Golden Olive



09 Dark Green



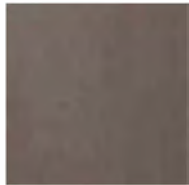
10 Storm Blue



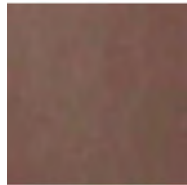
11 Aqua Marine



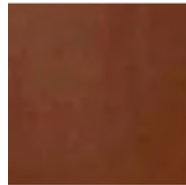
12 Capri Blue



13 Light Gray



14 Lavender



15 Ash Rose



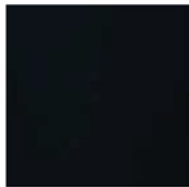
16 Deep Bordeaux



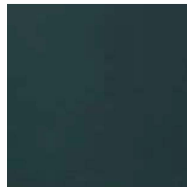
17 Rubi



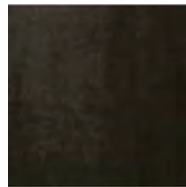
18 Black



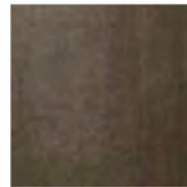
19 Navy Blue



20 Horizon Blue



21 Steel Gray



22 Dark Taupe



23 Ash Gray

Composition: 100%PL

Width: 140 (+/- 2cm)

Weight: 420 gr/ml

Lightfastness: 4

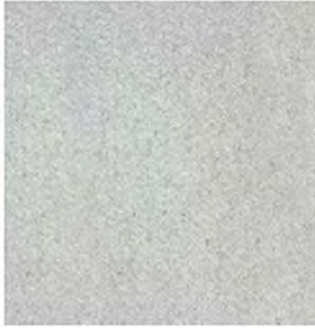
Pilling: 4/5

Martindale: 100,000 CC

Shrinkage: +/-2%

Obs.: FR treatment available upon request

FRISSET BOUCLE



01 WILD WHITE



02 GREIGE



03 TAUPE



04 MOSS GREEN



05 MIDNIGHT BLUE



06 GRAY

ZENITH NATURAL LEATHER



9000 Blanco



9001 Latte



9047 Cammello



9019 Acqua



9030 Cioccolato



9008 Topo



9023 Grafite



9009 Grigio



9024 Nero



9032 Ardesia



9021 Oceana



9018 Verdene

ZENITH NATURAL LEATHER



9022 Acclalo



9033 Cenere



9039 Champagne



9010 Avana



9012 Nocclola



9043 Nude



9037 Arancio



9038 Ananas



9042 Petunia



9016 Rosso

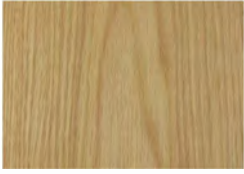


9041 Cipria



9026 Granata

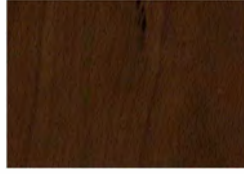
SOLID WOOD



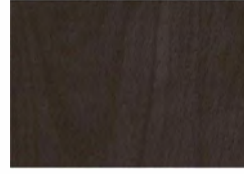
Natural Oak



Beech 056-0



Beech 056-1



Beech 056-2



Beech 056-3



Beech 056-5