



MERCURIO

SKU:XEMOHT-401-M99

Mercurio Chair wood structure
Various fabric options



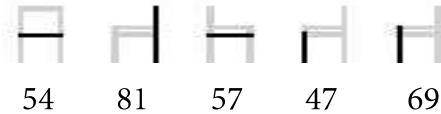
Dimensions:
Height: 81cm - 31.9 in
Width: 54cm - 21.3 in
Depth: 57cm - 22.4 in
Seat Height: 47cm - 18.5 in

W	D	H		
54	57	81		
Seat Height			140 cm	per box
Arm Height			kg: 17	
Kg / Unit			m3: 0,58	
			Pcs: 2	



MERCURIO

SKU:XEMOHT-402-M98

Mercurio Armchair wood structure
Various fabric options



Dimensions:
Height: 81cm - 31.9 in
Width: 54cm - 21.3 in
Depth: 57cm - 22.4 in
Seat Height: 47cm - 18.5 in
Arm Height: 69cm - 27.1 in

W	D	H		
54	57	81		
Seat Height			140 cm	per box
Arm Height			kg: 11	
Kg / Unit			m3: 0,37	
			Pcs: 1	

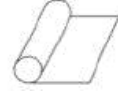

MERCURIO

SKU:XEMOHT-401-M171E

Mercurio Chair wood structure
Stackable
Various fabric options



Dimensions:
Height: 81cm - 31.9 in
Width: 54cm - 21.3 in
Depth: 57cm - 22.4 in
Seat Height: 47cm - 18.5 in

W	D	H		
54	57	81		
Seat Height			140 cm	per box
Arm Height			kg: 17	
Kg / Unit			m3: 0,58	
			Pcs: 2	

Contact us for COM/COL requirements and instructions.

ASTON VINYL Indoor/Outdoor



Aston 813 Linen



Aston 507 Rich Ivory



Aston 805 Cream



Aston 300 Gold



Aston 905 Dove



Aston 952 Platinum



Aston 238 Citrus



Aston 823 Chablis



Aston 837 Stone



Aston 314 Mustard



Aston 801 Tan



Aston 815 Buff



Aston 817 Chestnut



Aston 703 Mink



Aston 814 Espresso



Aston 807 Mushroom



Aston 203 Emerald



Aston 116 Navy



Aston 105 Indigo



Aston 953 Gunmetal



Aston 904 Pewter



Aston 919 Zinc



Aston 954 Graphite



Aston 900 Black



Aston 906 Ash

ASTON VINYL Indoor/Outdoor



Aston 220 Light Green



Aston 204 Moss



Aston 233 Pistachio



Aston 226 Lime



Aston 228 Bottle Green



Aston 506 Mist



Aston 253 Cardamom



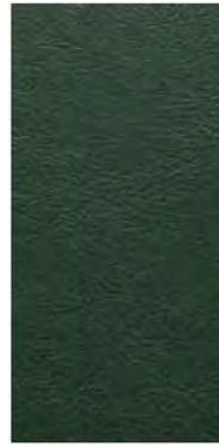
Aston 205 Sage Green



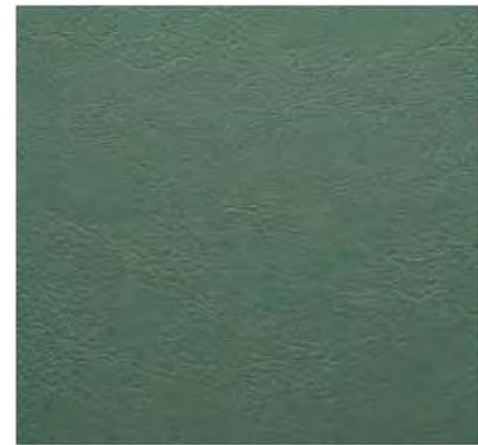
Aston 110 Pacific



Aston 219 Seafoam



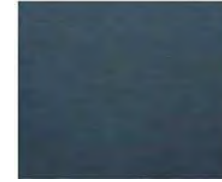
Aston 215 Elm



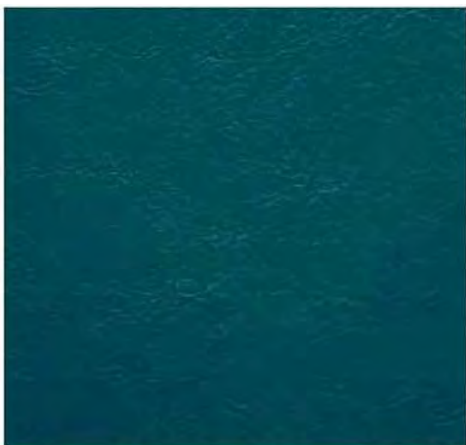
Aston 251 Eau de Nil



Aston 100 Blue



Aston 134 Sky



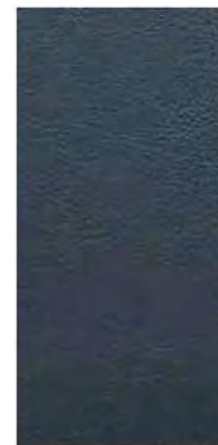
Aston 131 Azure



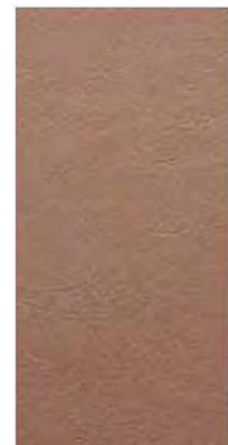
Aston 151 Teal



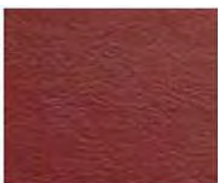
Aston 192 Ink



Aston 108 Delph



Aston 613 Pale Pink



Aston 414 Wine



Aston 412 Purple



Aston 213 Aubergine



Aston 409 Magenta



Aston 414 Wine

ASTON VINYL Indoor/Outdoor



Aston 414 Wine



Aston 412 Purple



Aston 213 Aubergine



Aston 409 Magenta



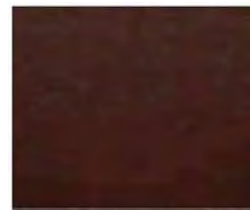
Aston 414 Wine



Aston 618 Blush



Aston 400 Red



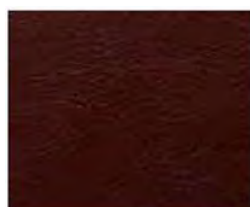
Aston 700 Brown



Aston 401 Amber



Aston 444 Cherry



Aston 407 Burgundy



Aston 408 Terracotta



Aston 877 Oyster



Upholstery



Flame Retardant



Abrasion



Waterproof



Outdoor & Indoor



Anti-Microbial



Stain Resistant

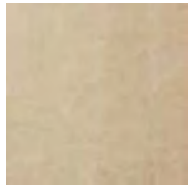


Phthalate Free

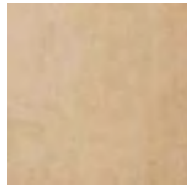


Heavy Metals Free

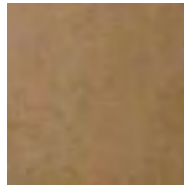
PROJECT VELVET WATER REPELLENT/PROJECT FR



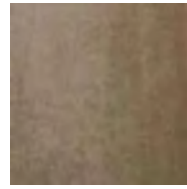
01 Ivory



02 Sand



03 Beige



04 Taupe



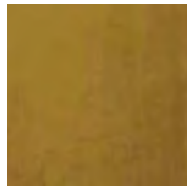
05 Chocolate



06 Curry



07 Pure Yellow



08 Golden Olive



09 Dark Green



10 Storm Blue



11 Aqua Marine



12 Capri Blue



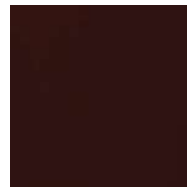
13 Light Gray



14 Lavender



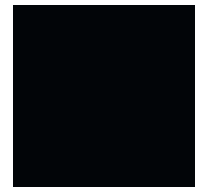
15 Ash Rose



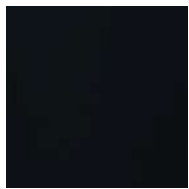
16 Deep Bordeaux



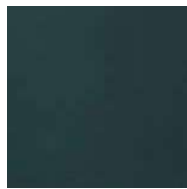
17 Rubi



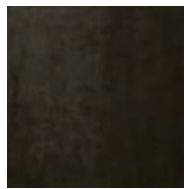
18 Black



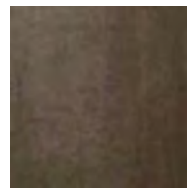
19 Navy Blue



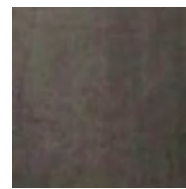
20 Horizon Blue



21 Steel Gray



22 Dark Taupe



23 Ash Gray

Composition: 100%PL

Width: 140 (+/- 2cm)

Weight: 420 gr/ml

Lightfastness: 4

Pilling: 4/5

Martindale: 100,000 CC

Shrinkage: +/-2%

Obs.: FR treatment available upon request

THARA + TEFLON (ULTRASUEDE)



01 White



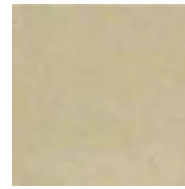
02 Birch



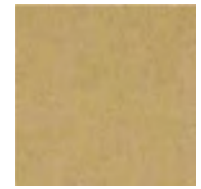
03 Vanilla



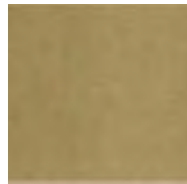
04 Almondine



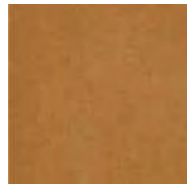
05 Pebble



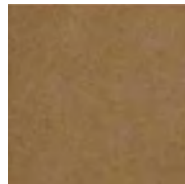
06 Flax



07 Sand



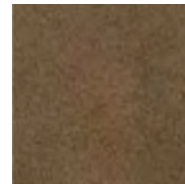
08 Apricot Nectar



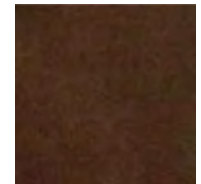
09 Caramel



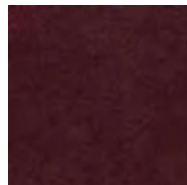
10 Brown Sugar



11 Tobacco Brown



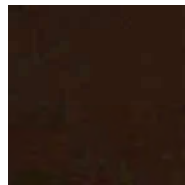
12 Root Beer



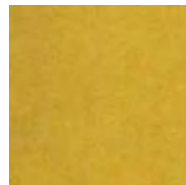
13 Wild Ginger



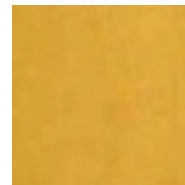
14 Grape Wine



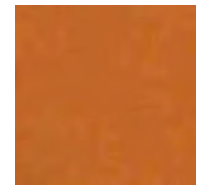
15 Pine Cone



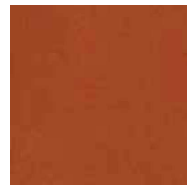
16 Ochre



17 Amber Yellow



18 Pumpkin



19 Apricot Orange



20 Grenadine



21 Poinsettia



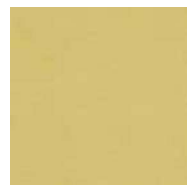
22 Cranberry



23 Shocking Pink



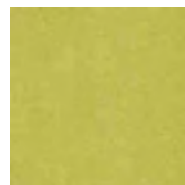
24 Candy Pink



25 Pale Banana



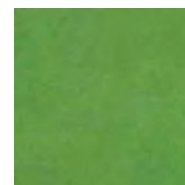
26 Blazing Yellow



27 Celery Green



28 Iceberg Green



29 Island Green



30 Hunter Green

Composition:

Base: 100% PL

Back Side: 65% PL+ 35% CO

Width: 140/145 cm

Weight: 450 g/ml

Martindale: > 40,000

Light fastness: 4

Pilling: 4-5

FR treatment available upon request for BS5852

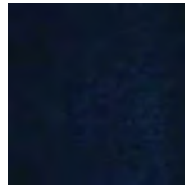
THARA + TEFLON (ULTRASUEDE)



31 Wild Dove



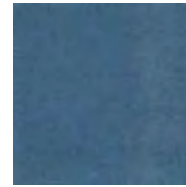
32 Black Ink



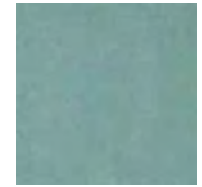
33 Midnight



34 Strong Blue



35 Swedish Blue



36 Angel Blue



37 Artic Ice



38 Ashes of Roses



39 Lavender Herb



40 Antelope



41 Suede



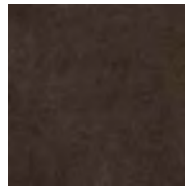
42 Dark Wine



43 Light Olive



44 Safari Green



45 Dark Chocolate



46 Iceberg



47 Cloud Gray

Composition:

Base: 100% PL

Back Side: 65% PL+ 35% CO

Width: 140/145 cm

Weight: 450 g/ml

Martindale: > 40,000

Light fastness: 4

Pilling: 4-5

FR treatment available upon request for BS5852

ZENITH NATURAL LEATHER



9000 Blanco



9001 Latte



9047 Cammello



9019 Acqua



9030 Cioccolato



9008 Topo



9023 Grafite



9009 Grigio



9024 Nero



9032 Ardesia



9021 Oceana



9018 Verdone

ZENITH NATURAL LEATHER



9022 Acclalo



9033 Cenere



9039 Champagne



9010 Avana



9012 Nocclola



9043 Nude



9037 Arancio



9038 Ananas



9042 Petunia



9016 Rosso



9041 Cipria



9026 Granata

FRAME FINISHES & WOOD

FREIXO / ASH / FRÊNE / FRESNO



C6 ASH



C8 ASH



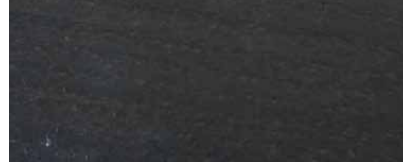
C11 ASH



C4 ASH



C20 ASH



C14 ASH



C13 ASH



C12 ASH



C15 ASH



C156 ASH

BLACK 02

Please be aware that the actual colors might vary from what you see on your screen, as monitor settings can differ.