

# Finishes

---

## finishes

---

Fixed  
Ref. 65009



white



british gray



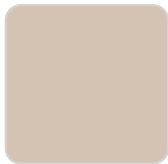
traffic gray



black



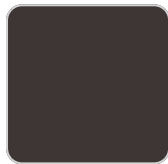
ecru



crema



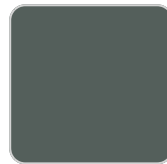
castoro fiber



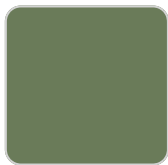
cacao



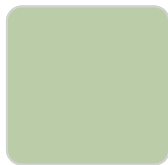
notte blue



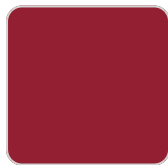
modo green



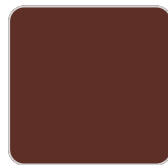
pickle



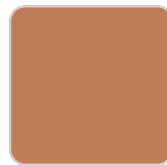
almond



red



purjai red



melon



mostaza



Powder coated aluminum base with non collapsable attachment made of polyamide and fiber glass

## COLLAPSIBLE TOP

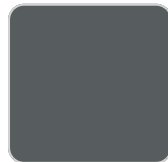
Ref. 65009T



white



british gray



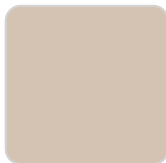
traffic gray



black



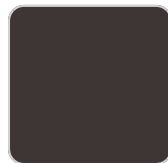
ecru



crema



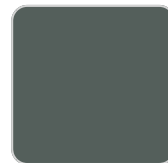
castoro fiber



cacao



notte blue



modo green



pickle



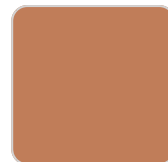
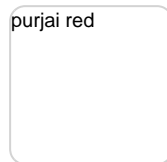
almond



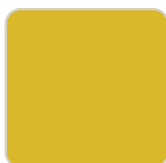
red



purjai red



melon



mostaza



Powder coated aluminum base with 90° collapsable attachment made of polyamide and fiber glass

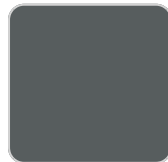
Fixed glass  
Ref. 65009V



white



british gray



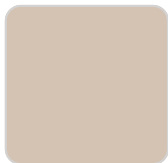
traffic gray



black



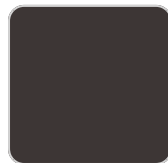
ecru



crema



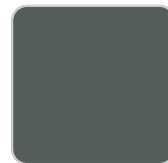
castoro fiber



cacao



notte blue



modo green



pickle



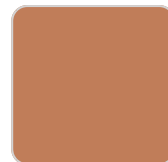
almond



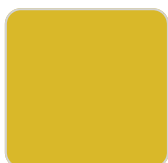
red



purjai red



melon



mostaza

Powder coated aluminum base with non collapsable aluminum attachment powder coated, made exclusively for our glass tops.