

Linus Armchair

SKU:XEMOHT-402-Linus Armchair

Product type: Indoor Armchair



27.5" W x 27.5" D x 29.5" H - 16.5" SH

This armchair features a vintage-inspired design with a modern twist. It is upholstered in velvet fabric, creating a warm and inviting look. The curved backrest and armrests offer a soft, enveloping shape, providing both comfort and elegance.

A striking detail is the decorative fringe along the base in a contrasting light teal color, adding a playful yet sophisticated touch. The armchair's compact size and rounded silhouette make it perfect for cozy corners or as a statement piece in any room.

MATERIALS: The upholstery is available in COM , Fabrics or leather.

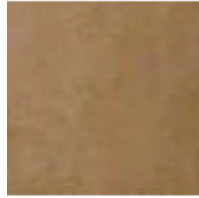
PROJECT VELVET WATER REPELLENT/PROJECT FR



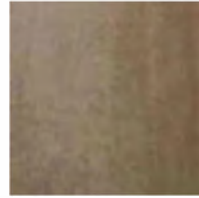
01 Ivory



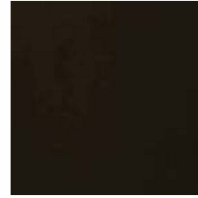
02 Sand



03 Beige



04 Taupe



05 Chocolate



06 Curry



07 Pure Yellow



08 Golden Olive



09 Dark Green



10 Storm Blue



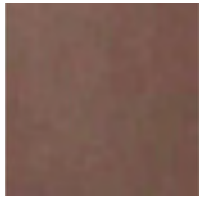
11 Aqua Marine



12 Capri Blue



13 Light Gray



14 Lavender



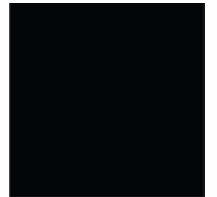
15 Ash Rose



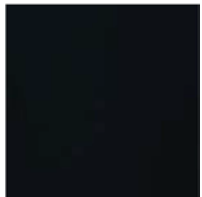
16 Deep Bordeaux



17 Rubi



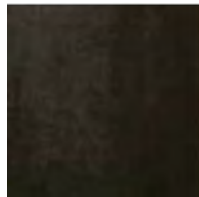
18 Black



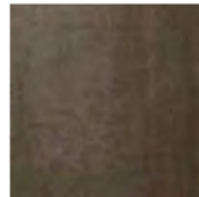
19 Navy Blue



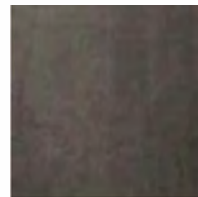
20 Horizon Blue



21 Steel Gray



22 Dark Taupe



23 Ash Gray

Composition: 100%PL

Width: 140 (+/- 2cm)

Weight: 420 gr/ml

Lightfastness: 4

Pilling: 4/5

Martindale: 100,000 CC

Shrinkage: +/-2%

Obs.: FR treatment available upon request

VELLANA DOUBLE WIDTH VELVET



Composition: 100% PL

Width: 300 cm

Weight: 1230 gr/ml

Martindale: 150.000 CC

Pilling: 5

Lightfastness: > 5

FR: Treatment available in narrow with and lamination BS5852 SOURCE 0&1 + CRIB 5 + EN1021 SOURCE 1&2 + IMO8.

USE



WASHING CONDITIONS

