

Composición: 100% Acrílico teñido en masa
Ancho: 160cm
Acabado: hidrófugo con tratamiento antimanchas.
Solidez a la luz: 7/8
Garantía: 5 años
Tolerancia: valores susceptibles de tolerancia de +/- 5%

Composition: 100% solution dyed acrylic
Width: 160 cm
Finish: water repellent with a stain resistant treatment.
Light fastness: 7/8
Warranty: 5 years
Tolerance: values subject to +/- 5% tolerance

Limpieza y mantenimiento

Eliminar la suciedad mediante cepillado o aspirado suave del tejido. Lavar a temperatura máxima de 30° y jabón neutro. No utilizar disolventes ni detergentes abrasivos. No utilizar secadora. Planchado máximo a 150°. No admite lavado en seco.

Maintenance and cleaning

Remove dirt by softly brushing or vacuuming the fabric. Wash at 30° max. with a mild soap. Do not use solvents or abrasive detergents. Do not tumble dry. Iron up to 150° max. Do not dry clean.



Resistente al agua
Water resistant



Resistente a las manchas
Stain resistant



Resistente al moho
Mould resistant



Fuerte y duradero
Durable and strong



Aislante
Non-conductive



Fácil de limpiar
Easy to clean



Protección UV
UV protection



Desinfectable
Disinfectable



Resistente a los rayos UV
UV resistant



Limpiable con lejía
Bleach cleanable

BATYLINE

TEXYLOOP[®]
A CLORECORD INDUSTRY

Serge Ferrari

Composición: Composite PVC – fibras sintéticas
Ancho: 180cm
Garantía: 5 años
Reciclabilidad: 100% por el sistema Taxyloop
Sistema de gestión de calidad: ISO 9001
Sistema de gestión medioambiental: ISO 14001

Composition: Composite PVC-synthetic fibres
Width: 180 cm
Warranty: 5 years
Recyclability: 100% by Taxyloop method
Quality system: ISO 9001
Environmental system: ISO 14001

Limpieza y mantenimiento

Quitar el polvo al tejido con un aspirador o un cepillo suave no metálico. Lavar con un cepillo suave o una esponja utilizando agua jabonosa. Aclarar abundantemente con agua clara (chorro de agua). Dejar que se seque bien el tejido al aire libre en posición desplegada. Si el tejido puede desprenderse de su soporte, la limpieza puede realizarse a máquina a una temperatura no superior a 40°C.

Maintenance and cleaning

Remove dust from the fabric with a vacuum cleaner or soft, non-metallic brush. Wash with a soft brush or a sponge, using soapy water. Rinse copiously (spray) with clean water. Allow the fabric to air dry completely, well spread out. If the textile can be removed from its base, it may be machine-washed at a temperature no higher than 40°C.



Fácil cuidado
Easy care



Resistente al desgarro
Tear resistant



Resistente a los rayos UV
UV resistant



Resistente al moho
Mould resistant



Resistente a la deformación
Deformation resistance



G1 | 22
20000 Cycles
Martindale



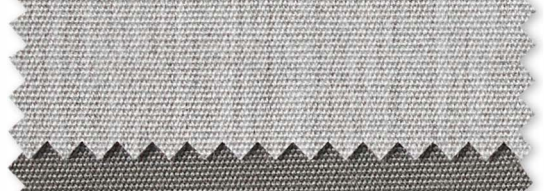
G1 | 21
20000 Cycles
Martindale



G1 | 1101
20000 Cycles
Martindale



G1 | 1103
20000 Cycles
Martindale



G1 | 1119
20000 Cycles
Martindale



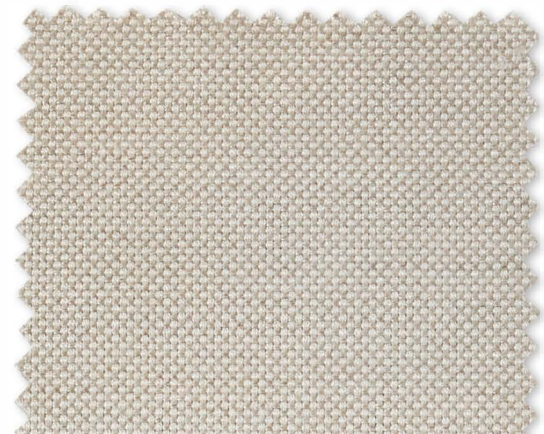
G1 | 1201
20000 Cycles
Martindale



G2 | 1086
25000 Cycles
Martindale



G2 | 1088
20000 Cycles
Martindale



G2 | 1269
20000 Cycles
Martindale



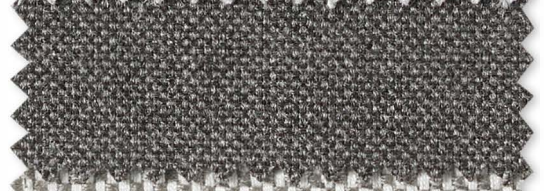
G2 | 1253
20000 Cycles
Martindale



G2 | 1255
20000 Cycles
Martindale



G2 | 1252
25000 Cycles
Martindale



G2 | 1256
20000 Cycles
Martindale



G2 | 1270
20000 Cycles
Martindale



G2 | 1271
20000 Cycles
Martindale



G2 | 1273
20000 Cycles
Martindale

G2 | 1272
20000 Cycles
Martindale

G2 | 1275
20000 Cycles
Martindale



G2 | 1268
20000 Cycles
Martindale

G2 | 1263
20000 Cycles
Martindale

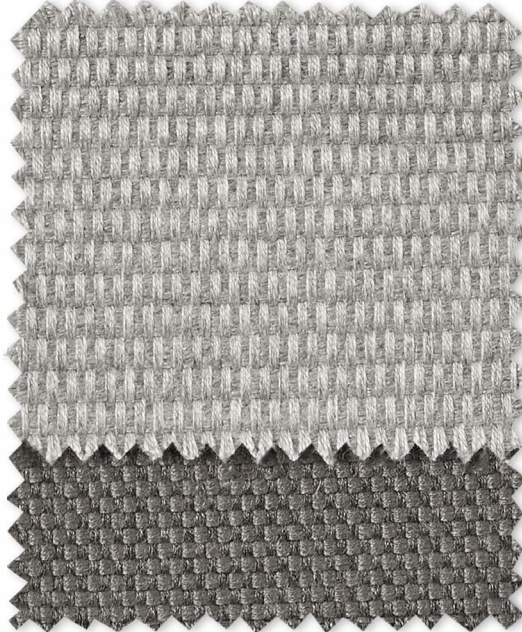
G2 | 1274
20000 Cycles
Martindale



G3 | 1276
60000 Cycles
Martindale

G3 | 1277
60000 Cycles
Martindale

G3 | 1278
60000 Cycles
Martindale



G3 | 1279
60000 Cycles
Martindale

G3 | 1280
60000 Cycles
Martindale



G2 | 35
120000 Cycles
Martindale

G2 | 37
120000 Cycles
Martindale

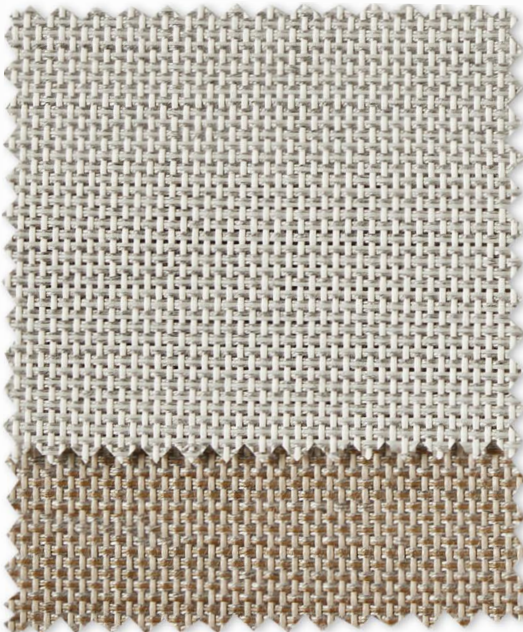
G2 | 39
120000 Cycles
Martindale



G2 | 40
120000 Cycles
Martindale

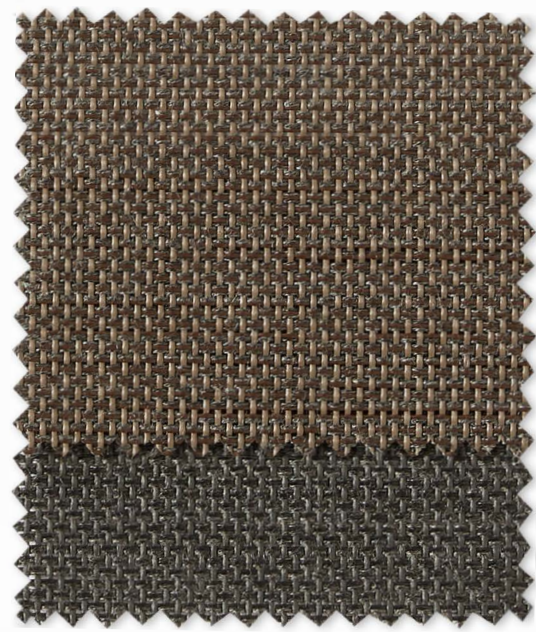
G2 | 38
120000 Cycles
Martindale

G2 | 57
120000 Cycles
Martindale



G3 | 13
120000 Cycles
Martindale

G3 | 09
120000 Cycles
Martindale



G3 | 10
120000 Cycles
Martindale

G3 | 11
120000 Cycles
Martindale

Powder coated aluminium

With epoxy resin used as a binder to increase resistance to corrosion, abrasion and chemical agents.

Maintenance and cleaning

Use soft cloths or sponges that will not scratch the surface with soap and water or neutral detergents diluted in water; never use abrasive products. Then rinse with clean water and dry with a cloth to prevent the detergent from affecting the material.



Blanco nieve 70
White snow 70



Crema 34
Cream 34



Arena 74
Sand 74



Gristaupe 60
Taupe grey 60



Óxido 75
Rust 75



Gris metalizado 56
Gunmetal grey 56



Terracota 72
Terracotta 72



Verde ficus 73
Green ficus 73



Azul cielo 71
Blue sky 71



Negro 59
Black 59

Cuerda Rope Ø4mm

Both the rope itself and its coating are made from polypropylene to ensure greater resistance to light and weather. It also includes a colour filter for greater fixing.

Maintenance and cleaning

A soapy solution with a neutral pH can be used to clean any dirt or marks. Avoid contact with abrasive products (bleach, chlorine, oils, products containing acids or corrosive substances).



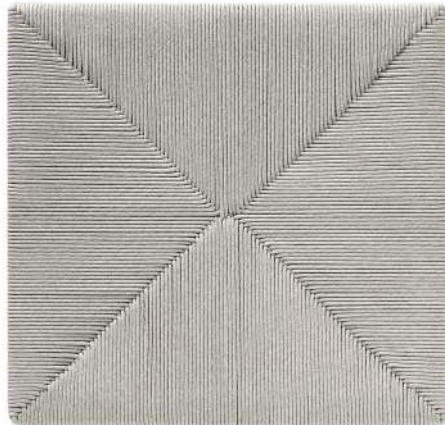
ALUMINIO - CUERDA | 34 Crema - Beige
ALUMINIUM - ROPE | 34 Cream - Beige



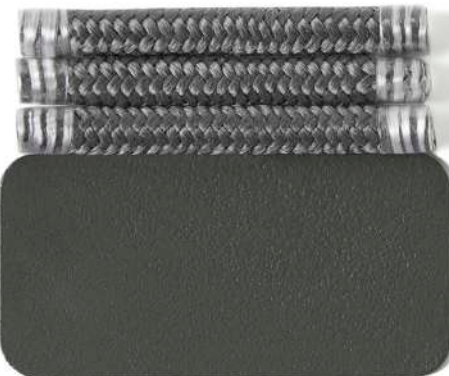
Beige
Beige



ALUMINIO - CUERDA | 74 Arena - Gris perlado
ALUMINIUM - ROPE | 74 Sand - Pearl grey



Gris perlado
Pearl grey



ALUMINIO - CUERDA | 56 Gris metalizado - Grafito
ALUMINIUM - ROPE | 56 Gunmetal grey - Graphite



Grafito
Graphite