



Lea S M TS Chair

SKU: MIMODJ-401-S1940ST

Product type: Indoor chair

19.3" W x 22.4" D x 33.5" H - 18.1" SH

Lea chair with four legs base in metal. Seat and backrest upholstered in fabric, leather or faux leather also with different fabrics for front face and back face. Optional: wooden back face.

MATERIALS: The upholstery is available in COM , fabrics or leather. **FINISHES:** Legs in metal

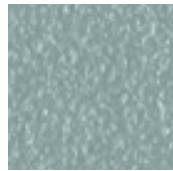


Colors and Materials

Structure



Papaya orange steel



Light blue metal



White steel



Bronze metal



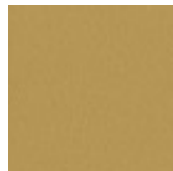
Ash grey metal



Sand steel



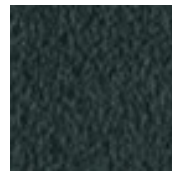
Fango steel



Golden yellow metal



Pastel yellow steel



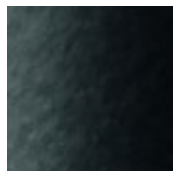
Grafite metal



Light grey steel



Brown steel



Black steel



Ocher steel



Facepowder pink metal



Red steel



Bulgaro red metal



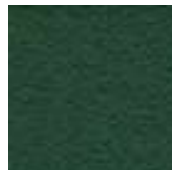
Cherry red metal



Pine green steel



Sage green metal



Dark green metal



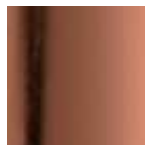
Golden bronze



Matt golden bronze



Golden champagne



Pink Gold



Black Nickel



Matt black nickel

Coating



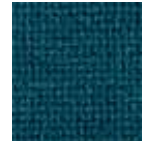
Cotton Club fabric
14 Colors



Fenix Wool fabric
16 Colors



Main Line Flax fabric
16 Colors



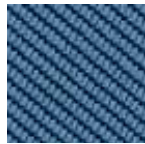
Manhattan fabric
13 Colors



Mirage fabric
15 Colors



Novabuk fabric
17 Colors



Tessuto Oceanic
13 Colors



Remix 3 fabric
19 Colors



Second fabric
11 Colors



Velvet Superb
15 Colors



Uniform Melange Fabric
7 Colors



Visual fabric
13 Colors



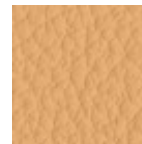
Yoredale fabric
14 Colors



Secret faux leather
23 Colors



Vintage faux leather
12 Colors



Fiore leather
21 Colors



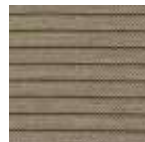
Vintage leather
8 Colors



Flame Fabric
7 Colors



Network fabric
9 Colors



Ouche Fabric
7 Colors



Plain Fabric
7 Colors

Backrest



Veneered flamed walnut



Stained ash veneered
10 Colors