

Lea S M CU Chair

SKU: MIMODJ-401-S1940SC

Product type: Indoor chair

19.3" W x 22.4" D x 33.5" H - 18.1" SH

Chair with four legs base in lacquered steel. Seat and back upholstered in hide or Tuscan hide

MATERIALS: The upholstery is available in COM or leather.
FINISHES: Legs in lacquered steel

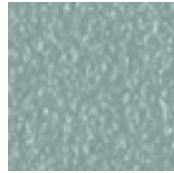


Colors and Materials

Structure



Papaya orange steel



Light blue metal



White steel



Bronze metal



Ash grey metal



Sand steel



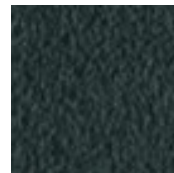
Fango steel



Golden yellow metal



Pastel yellow steel



Grafite metal



Light grey steel



Brown steel



Black steel



Ocher steel



Facepowder pink metal



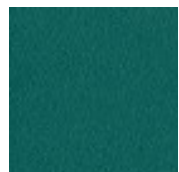
Red steel



Bulgaro red metal



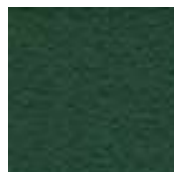
Cherry red metal



Pine green steel



Sage green metal



Dark green metal



Golden bronze



Matt golden bronze



Golden champagne



Pink Gold



Black Nickel



Matt black nickel

Coating



Hide

18 Colors



Tuscan hide

6 Colors