

MONDO

Lea P GX CU Chair

SKU: MIMODJ-401-S1940PYC

Product type: Indoor chair

23.2" W x 23.6" D x 33.1" H - 19" SH

Lea armchair with fixed trestle base in metal with self-return mechanism.

Seating upholstered in hide or Tuscan hide.

MATERIALS: The upholstery is available in COM or leather.

FINISHES: Legs in lacquered steel

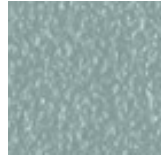


Colors and Materials

Structure



Papaya orange steel



Light blue metal



White steel



Ocean blue steel



Bronze metal



Sand steel



Fango steel



Golden yellow metal



Pastel yellow steel



Grafite metal



Ash grey metal



Light grey steel



Brown steel



Black steel



Ocher steel



Facepowder pink metal



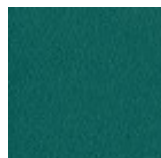
Red steel



Bulgaro red metal



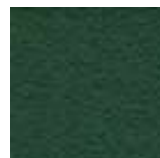
Cherry red metal



Pine green steel



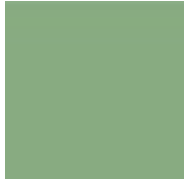
Sage green metal



Dark green metal

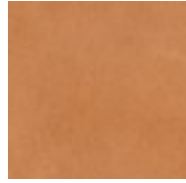
Coating

MONDO



Hide

18 Colors



Tuscan hide

6 Colors