

KARL



KARL CHAIR
SKU: MAMOBO-401-Karl 1 Chair

KARL CHAIR
SKU: MAMOBO-401-Karl 2 Chair

KARL ARMCHAIR
SKU: MAMOBO-401-Karl Armchair

KARL BARSTOOL
SKU: MAMOBO-403-Karl Barstool

TECHNICAL CHARACTERISTICS

Frame: constructed in plywood*

Natural or Stained Plywood

Plywood is made of layers of wood. Due to Plywood's nature, small marks may happen both in its surface as in its extremities. These are characteristic features of the material and not defects.

The plywood is finished in its natural color or with a wood stain. After this, the material is covered with varnish to protect its surface.

Lacquered Plywood

Plywood is made of layers of wood. Due to Plywood's nature, small marks may happen both in its surface as in its extremities. These are characteristic features of the material and not defects.

The plywood is subjected to a priming process. After this, the material is lacquered in successive layers until getting a homogeneous color finish. To increase hardness and resistance against scratches, the drying process is carried out in a stove.

Fixed cover

Back: natural rattan

Seat foam: 100% PU HR 35 kg/m3

Fire retardent foam is available upon request

Firmness: soft ○○●○○ firm

Handmade in Portugal

AS PICTURED

Karl chair with arms: bouclé snow seat, natural plywood structure

Karl chair no arms: bouclé terracota seat, natural oak structure

Karl armchair: bouclé gold yellow seat, natural oak structure

Karl bar chair with arms: smooth easy clean corn, smooth easy clean shell piping black lacquered wood structure

Karl bar chair no arms: bouclé latte seat, natural oak structure

CLIENT'S OWN MATERIAL CONSUMPTION

Karl chair:	Karl armchair:	Karl bar chair:
all: 1 m	all: 2 m	all: 1 m
piping: 0,5cm	piping: 0,5cm	piping: 0,5cm

PRODUCT OPTIONS

Upholstery: available in several fabrics and leather

Structure: available in plywood veneer in all solid wood color options or lacquered wood

Ral colors available upon request and only for quantities.

PACKAGING

Weight item:

Karl chair:	Karl armchair:	Karl bar chair:
17 lb 8 kg	44 lb 20 kg	22 lb 10 kg

Weight packaging:

Karl chair:	Karl armchair:	Karl bar chair:
44 lb 20 kg	71 lb 32 kg	49 lb 22 kg

Packaging type: cardboard box and pallet

Packaging dimensions with pallet:

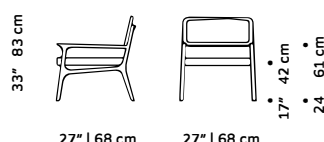
Karl chair:	Karl armchair:	Karl bar chair:
53x56x88 cm	71x71x85 cm	56x51x105 cm

Number of parcels: 1 per box

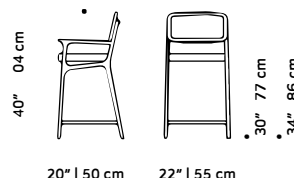
KARL chair



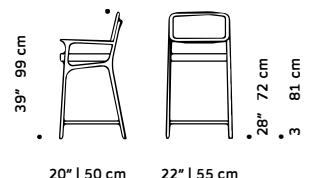
KARL armchair



KARL bar chair



KARL counter chair



ASTON VINYL Indoor/Outdoor



Aston 813 Linen



Aston 507 Rich Ivory



Aston 805 Cream



Aston 300 Gold



Aston 905 Dove



Aston 952 Platinum



Aston 238 Citrus



Aston 823 Chablis



Aston 837 Stone



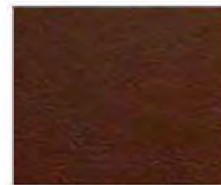
Aston 314 Mustard



Aston 801 Tan



Aston 815 Buff



Aston 817 Chestnut



Aston 703 Mink



Aston 814 Espresso



Aston 807 Mushroom



Aston 203 Emerald



Aston 116 Navy



Aston 105 Indigo



Aston 953 Gunmetal



Aston 904 Pewter



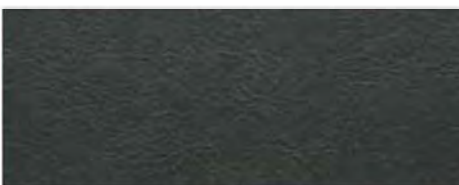
Aston 919 Zinc



Aston 954 Graphite



Aston 900 Black



Aston 906 Ash

ASTON VINYL Indoor/Outdoor



Aston 220 Light Green



Aston 204 Moss



Aston 233 Pistachio



Aston 226 Lime



Aston 228 Bottle Green



Aston 506 Mist



Aston 253 Cardamom



Aston 205 Sage Green



Aston 110 Pacific



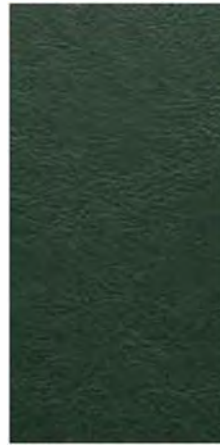
Aston 219 Seafoam



Aston 100 Blue



Aston 134 Sky



Aston 215 Elm



Aston 251 Eau de Nil



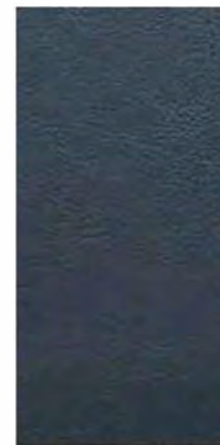
Aston 131 Azure



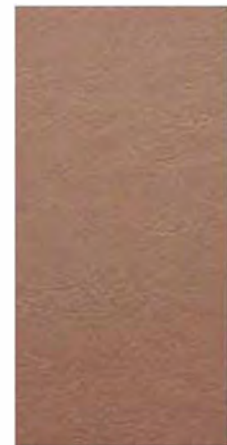
Aston 151 Teal



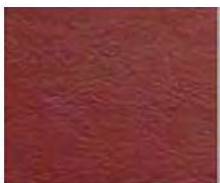
Aston 192 Ink



Aston 108 Delph



Aston 613 Pale Pink



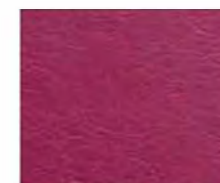
Aston 414 Wine



Aston 412 Purple



Aston 213 Aubergine



Aston 409 Magenta



Aston 414 Wine

ASTON VINYL Indoor/Outdoor



Aston 414 Wine



Aston 412 Purple



Aston 213 Aubergine



Aston 409 Magenta



Aston 414 Wine



Aston 618 Blush



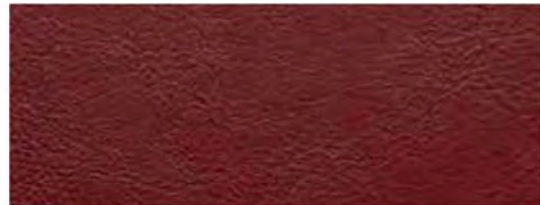
Aston 400 Red



Aston 700 Brown



Aston 401 Amber



Aston 444 Cherry



Aston 407 Burgundy



Aston 408 Terracotta



Aston 877 Oyster



Upholstery



Flame Retardant



Abrasion



Waterproof



Outdoor & Indoor



Anti-Microbial



Stain Resistant



Phthalate Free

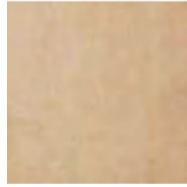


Heavy Metals Free

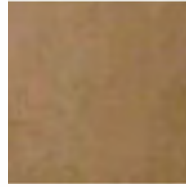
PROJECT VELVET WATER REPELLENT/PROJECT FR



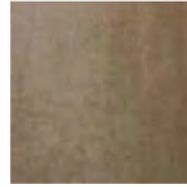
01 Ivory



02 Sand



03 Beige



04 Taupe



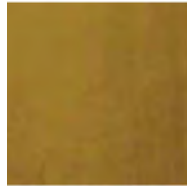
05 Chocolate



06 Curry



07 Pure Yellow



08 Golden Olive



09 Dark Green



10 Storm Blue



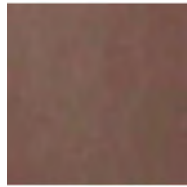
11 Aqua Marine



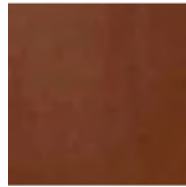
12 Capri Blue



13 Light Gray



14 Lavender



15 Ash Rose



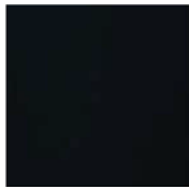
16 Deep Bordeaux



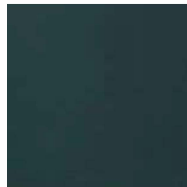
17 Rubi



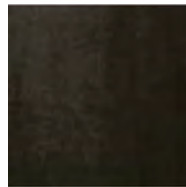
18 Black



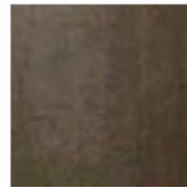
19 Navy Blue



20 Horizon Blue



21 Steel Gray



22 Dark Taupe



23 Ash Gray

Composition: 100%PL

Width: 140 (+/- 2cm)

Weight: 420 gr/ml

Lightfastness: 4

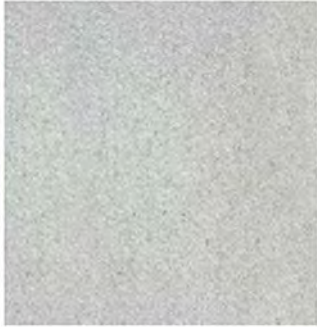
Pilling: 4/5

Martindale: 100,000 CC

Shrinkage: +/-2%

Obs.: FR treatment available upon request

FRISSET BOUCLE



01 WILD WHITE



02 GREIGE



03 TAUPE



04 MOSS GREEN



05 MIDNIGHT BLUE



06 GRAY

ZENITH NATURAL LEATHER



9000 Blanco



9001 Latte



9047 Cammello



9019 Acqua



9030 Cioccolato



9008 Topo



9023 Grafite



9009 Grigio



9024 Nero



9032 Ardesia



9021 Oceana



9018 Verdone

ZENITH NATURAL LEATHER



9022 Acclalo



9033 Cenere



9039 Champagne



9010 Avana



9012 Nocclola



9043 Nude



9037 Arancio



9038 Ananas



9042 Petunia



9016 Rosso

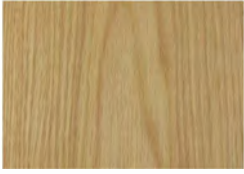


9041 Cipria



9026 Granata

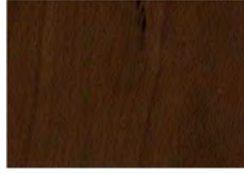
SOLID WOOD



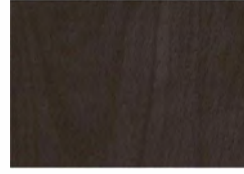
Natural Oak



Beech 056-0



Beech 056-1



Beech 056-2



Beech 056-3



Beech 056-5