

## HAMP COLLECTION

SKU:POMONT-701-HAMP

### HAMP

### SOFA



#### Materials

Structure of natural Teak. Batyline fabric.

#### Dimensions

Length x width x height:  
167 x 91 x 75 cm. / 65.7 x 35.8 x 29.5 in.  
Seating height: 41 cm. / 16.1 in.  
Armrests height: 57 cm. / 22.4 in.  
Weight: 32 Kg. / 70 lb.  
Volume: 1.44 m<sup>3</sup>.

#### Cushion content

Polyurethane Foam 35Kg HR Density.

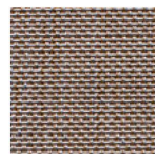
#### Fabric

100% Solution Dyed Acrylic with stain and mildew resistant treatment.  
Avoid condensation from hot and humidity.  
Good oil repellency. Light fastness 7/8.

#### Finish

Fabric color:

Batyline 09



Batyline 10

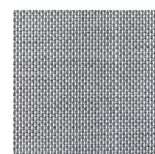


Batyline 11



Structure:

Batyline 13



Natural Teak



## HAMP

### DINING ARMCHAIR



#### Materials

Structure of natural Teak. Batyline fabric.

#### Dimensions

Length x width x height:  
60,5 x 63 x 84 cm. / 23.8 x 24.8 x 33.1 in.  
Seating height: 48 cm. / 19.9 in.  
Armrests height: 61,5 cm. / 24.2 in.  
Weight: 10 Kg. / 22 lb.  
Volume: 0.4 m<sup>3</sup>.

#### Cushion content

Polyurethane Foam 35Kg HR Density.

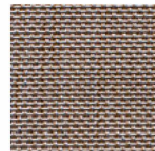
#### Fabric

100% Solution Dyed Acrylic with stain and mildew resistant treatment.  
Avoid condensation from hot and humidity.  
Good oil repellency. Light fastness 7/8.

#### Finish

Fabric color:

Batyline 09



Batyline 10

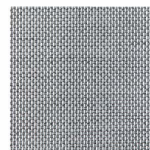


Batyline 11



Structure:

Batyline 13



Natural Teak



## HAMP LOUNGE ARMCHAIR



### Materials

Structure of natural Teak. Batyline fabric.

### Dimensions

Length x width x height:  
97 x 91 x 75 cm. / 38.2 x 35.8 x 29.5 in.  
Seating height: 41 cm. / 16.1 in.  
Armrests height: 57 cm. / 22.4 in.  
Weight: 21 Kg. / 46 lb.  
Volume: 0.86 m<sup>3</sup>.

### Cushion content

Polyurethane Foam 35Kg HR Density.

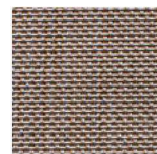
### Fabric

100% Solution Dyed Acrylic with stain and mildew resistant treatment.  
Avoid condensation from hot and humidity.  
Good oil repellency. Light fastness 7/8.

### Finish

Fabric color:

Batyline 09



Batyline 10

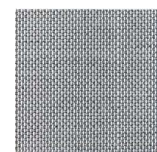


Batyline 11



Structure:

Batyline 13



Natural Teak

