

Flora Armchair

SKU:CHMORE-402-FLORA

Fire retardant cold-cure polyurethane shell, fully upholstered. Anthracite or sand powder coated steel frame.

Flora is a cozy and compact armchair, composed of a tubular metal frame that embraces a polyurethane shell, covered in fireproof fabric. Flora is based on flat and regular volumes, smoothed by light curves which soften the appearance of the seat making it welcoming and comfortable.

A dynamic product, whose originality is best expressed in the three-dimensional harmony of the lines that compose it and that make it look interesting from every point of view.

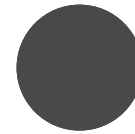


Width	57 cm – 22 in
Height	76 cm – 30 in
Height seat	46 cm – 18 in
Depth	59 cm – 23 in
Weight	12,5 kg – 27,5 lb
Packaging	0,37 m ³
Pieces for box	1

Indoor
Metal frame



Metal base finishes



satin anthracite



satin sand



Secret

1003	1025	1016	1017
			
1027	1012	1014	1009
			

FEATURES
76% PVC 22% PES 2% PU

LIGHTFASTNESS
6/7 ISO 105 B 02

FASTNESSTORUBBING
DRY 5, WET 5, ISO 1050X12

ABRASION RESISTANCE
60.000 CYCLES ISO 5470-2

FIRE RESISTANCE
UNI 9175 classe 1M
BS 5852-1 cigarette test
BS 5852-1 match test

Cat. A

Caliente

400	606	406	200
			
500	309	801	706
			

FEATURES
52% POLIPRO, 48% PL

LIGHTFASTNESS
4/5 ISO 105 B 02

FASTNESSTORUBBING
DRY 4/5, WET 4, ISO 1050X12

ABRASION RESISTANCE
40.000 CYCLES UNI EN ISO 12947-2

FIRE RESISTANCE
1IM - UNI 9175
EN 1021 part 1/2
NFPA 260 Class 1
California TB 117-2013
IMO MED - Ftp 307 part 8
IMO MED - Ftp 307 part 7

Cat. A

Angel

56/201	57/200	20/406	53/401
			
35/305	39/700	41/502	38/002
			

FEATURES
100% POLIPRO

LIGHTFASTNESS
5/6 ISO 105 B 02

FASTNESSTORUBBING
DRY 5, WET 4/5, ISO 1050X12

ABRASION RESISTANCE
100.000 CYCLES
UNI EN ISO 12947-2

FIRE RESISTANCE
1IM - UNI 9175
EN 1021 part 1/2
BS 5852 crib 5

NFPA 260 Class 1
California TB 117-2013
IMO MED - Ftp 307 part 8

Cat. A

Angel combo

600	203	702	404
			
301	308	302	701
			

FEATURES
100% POLIPRO

LIGHTFASTNESS
5 ISO 105 B 02

FASTNESSTORUBBING
DRY 5, WET 4/5, ISO 1050X12

ABRASION RESISTANCE
50.000 CYCLES UNI EN ISO 12947-2

FIRE RESISTANCE
1IM - UNI 9175
EN 1021 part 1/2
BS 5852 crib 5
NFPA 260 Class 1
California TB 117-2013
IMO MED - Ftp 307 part 8

Cat. A

Magnum tex

501	300	806	601
			
803	706	901	902
			

FEATURES
88% PVC 7% PL 4% CO 1% PO

LIGHTFASTNESS
> 7 ISO 105 B 02

FASTNESSTORUBBING
DRY 5, WET 5, ISO 1050X12








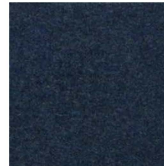
ABRASION RESISTANCE
> 100.000 CYCLES
UNI EN ISO 12947-2

FIRE RESISTANCE
1IM - UNI 9175
EN 1021 part 1, is 0 and 1
NFP 92 503 M3
NFPA 260 Class 1
California TB 117-2013

IMO FTP Code 307 part 8
ÖNOM B 3825 - schwer brennbar

Cat. B

Opera

101	600	201	200
			
402	800	305	700
			

FEATURES
100% WO

LIGHTFASTNESS
5 ISO 105 B 02

FASTNESSTORUBBING
DRY 4/5, WET 4, ISO 1050X12

ABRASION RESISTANCE
50.000 CYCLES UNI EN ISO 12947-2

FIRE RESISTANCE
1IM - UNI 9175
EN 1021 part 1/2
BS 5852 part 1, is 0
BS 5852 crib 5
NFD 60013 - AM.18

California TB 117-2013
IMO FTP Code 307 part 8

Cat. C

Tailor

Cat. B



FEATURES 100% PES LIGHTFASTNESS 6 ISO 105 B02	FASTNESSTORUBBING DRY 4/5, WET 4/5, ISO 1050X12 ABRASION RESISTANCE 100.000 CYCLES UNI EN ISO 12947-2	FIRE RESISTANCE UNI 9175 classe 1M
--	--	--

Aida

Cat. C



FEATURES 100% PL LIGHTFASTNESS 5 ISO 105 B02	FASTNESSTORUBBING DRY 4/5, WET 4, ISO 1050X12 ABRASION RESISTANCE 150.000 CYCLES UNI EN ISO 12947-2	FIRE RESISTANCE 1M - UNI 9175 class 1 - UNI 9177 class 1 - EN 13773 EN1021 part1/2 BS 7176 + A1 medium hazard BS 5852 crib 5	NF - P 92503 - M1 DIN 4102 - B1 NFPA 260 NFPA 701 pass California TB 117-2013 IMOMED - Ftp 307 part 8 ÖNOM B 3825 - schwer b rennbar
---	--	---	---

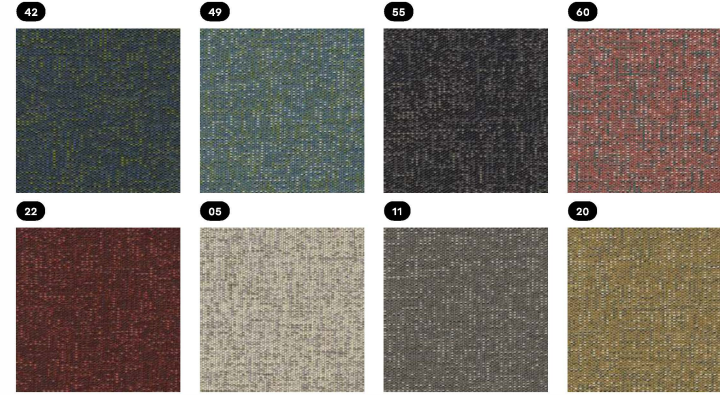
Lani

Cat. D



Galaxy

Cat. D



FEATURES 58% WO 19% PP 17% PES 6% CO LIGHTFASTNESS 5/6 ISO 105 B02	FASTNESSTORUBBING DRY 4/5, WET 4, ISO 1050X12 ABRASION RESISTANCE 35.000 CYCLES UNI EN ISO 12947-2	FIRE RESISTANCE BS 5852 0/1 BS 7176 Low hazard California TB 117-2013 NFPA 260-2013, CLASS 1 UNI 9175 Class 3M
---	---	--