

FLEXA 24H

Flexa 24H is enveloping, it adapts to you. Versatility, dynamism, contemporaneity, solidity and flexibility define it. It is a comfortable, precise seat with active ergonomics. Flexa offers performance and ergonomics, has materials tested for 24-hour use and for user weights up to 150 kg. Arms with 4D movement, synchronised or sliding system, adjustable lumbar support and telescopic controls.

BS
5459-2
2000

EN
1335-
1/2y3
2001

TESTED FOR 24-
HOUR USE

BACKREST
ADJUSTABLE
IN HEIGHT AND
LUMBAR SUPPORT
ADJUSTMENT

MADE IN THE
EUROPEAN UNION



FLEXA 24H SWIVEL CHAIR

SKU: DIMOLE-401-S1039

01.

Backrest

Adjustable in height. Exterior of the backrest is made of injection-moulded black or white polypropylene, 100% recyclable, with a 4 mm thick metal insert. Backrest in fireproof foam (UNE EN 1021-2/06 / BS-5852/06) of high density expanded polyurethane of 67 kg/m³ (EN ISO 845).



With adjustable lumbar support.

02.

Seat

Interior in beech plywood (MQ cert. 07-175), covered with fireproof foam (UNE EN 1021-2/06 / BS-5852/06) of high density expanded polyurethane 69 kg/m³ (EN ISO 845).

03.

Armrests (Optional)

BR12-BR13

4D with internal structure in polished aluminum or nylon, depending on the base, and exterior in polyamide.

1. 10 cm height adjustment.
2. Armrest depth adjustment, 4 cm in each direction.
3. Rotation of the armrest, 30° maximum in each direction. By holding down the inner button you can rotate 180°.
4. Width adjustment between armrests, up to 7.5 cm on each side.



04.

Sliding system / synchronised mechanism (BS 5459 part 2/00 A.5.1-A.5.2-A.5.3-A.5.5-A.7.6-A.7.8-A.7.9 / ANSI/BIFMA x5.1-2002 type I)

The synchro mechanism allows the seat and backrest to tilt synchronously with the central axis of the chair, but independently for models that are not monocoque. Thus, it is possible to adjust the degree of inclination of the backrest and seat.

The sliding system also has 5 different positions to adapt the depth of the sitting position and a translation of 7 cm.

It has the following specifications:

- Up to 22° of backrest inclination, with 5 locking positions with a fixing lever and an automatic stop search function. Possibility to regulate the pressure.
- Up to 11° of seat inclination, which is the working position 0°.



05.

Gas lift, bases and wheels

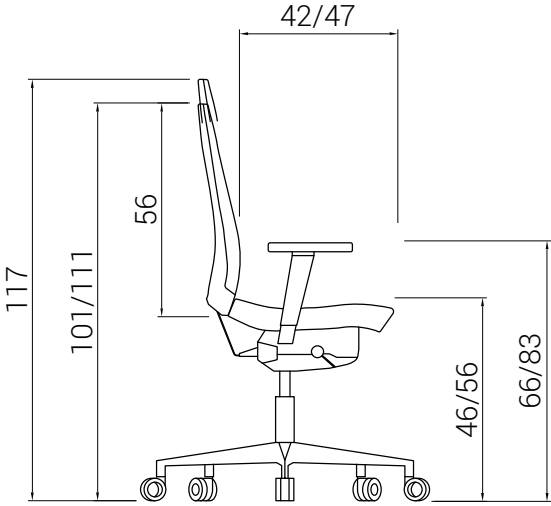
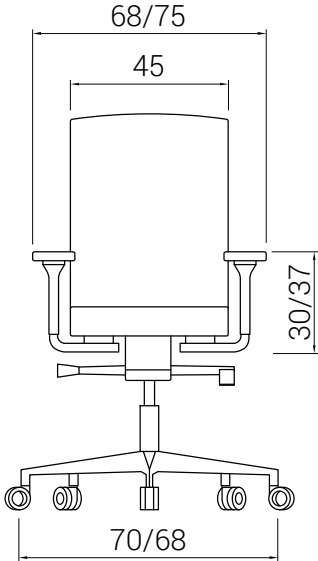
- Elevation using a class 4 black gas lift, tested for users weighing up to 150 kg.
- Polished aluminum base 70 cm diameter (ANSI-BIFMA X5.1-2011/7).
- Black nylon base of 68 cm diameter.
- Aluminium base painted in white epoxy (RAL 9010) with a diameter of 70 cm (ANSI-BIFMA X5.1-2011/7).
- Double Emilsider wheels of 65 mm diameter, with soft rubber-reinforced copolymer tyre tread and hollow design, and reinforced copolymer structure, tested for 24 hours use (EN 12529 / BIFMA X 5.1). Central black structure and grey tyre tread.

With an adjustable safety braking system (EN 12529) that applies a slight brake when the user stands up from the seat in order to prevent any movement of the chair when not in use. It has a screw at the bottom to adjust the braking force or deactivation of the braking system.

The base connection bolt has a circular nylon ring to prevent noise when used on metal or aluminum bases.



FLEXA 24H DIMENSIONS



FLEXA 24H SUSTAINABLE



97%

RECYCLABLE

- 57% Metal
- 3% Polypropylene
- 16% Other plastic materials
- 6% Wood
- 18% Others



BACKREST
Exterior is made of injection-moulded polypropylene, with a 4 mm thick metal insert. Backrest in foam of expanded polyurethane

MECHANISM
in steel.

BASE
in polished aluminium or black nylon.



SEAT
Interior in beech plywood covered with foam polyurethane

WHEELS
double soft rubber-reinforced copolymer tyre tread and hollow design, and reinforced copolymer structure

- ✓ 100% recyclable cardboard packaging, made from 90% recycled materials.
- ✓ Dileoffice is certified according to ISO 9001:2015, 14001:2015 and 14006:2020. All phases of the production process, from the receipt of components to the delivery of the finished product, are meticulously managed to minimise the impact on the environment.
- ✓ Dileoffice chairs are assessed by AIDIMEE to certify the compliance of each product with UNE EN standards.
- ✓ If it is necessary to replace the entire chair or any of its parts, the end customer will be informed of the recycling management of each element according to the composition of the materials.
- ✓ Transport is carried out by scheduled routes, giving priority to fuel savings. We use our own transport trucks, always trying to use the maximum volume, and minimising the volume in the packaging.



ERGONOMICS

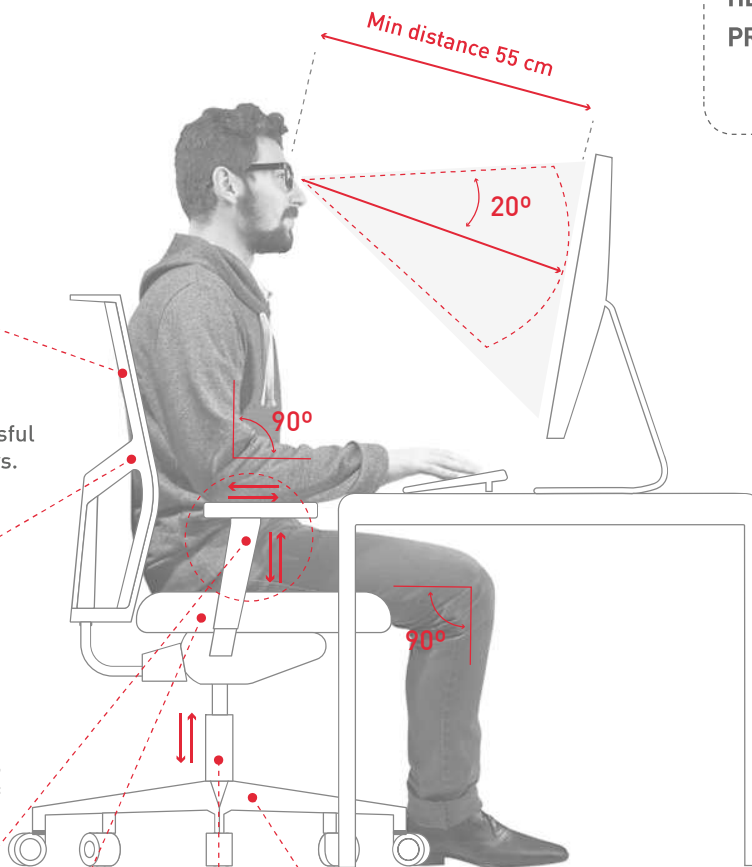
GOOD POSTURE IS ESSENTIAL TO AVOID HEALTH PROBLEMS

01.
THE INCLINATION OF THE SEAT AND THE BACKREST
 A synchronized movement of the seat and backrest, configure a very successful solution for long working or study days.

02.
LUMBAR ADJUSTMENT
 The backrest must provide good support for the entire back and be adapted to the lumbar part. The lumbar adjustment mechanism allows the curvature of the chair to be adjusted according to the curvature of the user's back for better support.

03.
ADJUSTABLE ARMRESTS
 The forearms should be parallel to the work surface and form a right angle with the arm.

04.
THE STRENGTH OF THE SEAT
 The seat must offer firmness and adaptation to the user's physiognomy.



05.
CHAIR HEIGHT ADJUSTMENT
 The possibility of adjusting the height allows for the correct posture, with the feet comfortably resting on the floor and the legs in a horizontal position.

07.
FABRIC
 Depending on the area of use and climate, one fabric or another should be chosen.

06.
BASES
 The base of the chair should have 5 points of support for the wheels on the ground, to facilitate their movement with minimal effort.

“Don't forget to take a break to stretch and move around regularly”

01

BALI (Go1)



02

POLYESTER (Go1)



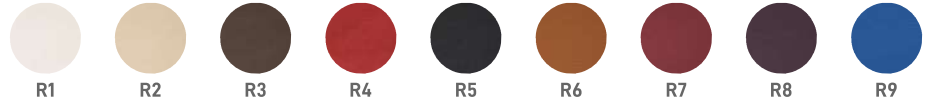
03

GOYA (Go1)



04

TOUCH LEATHER (Go1)



05

COMBI (Go1)



06

OCEAN (Go2)



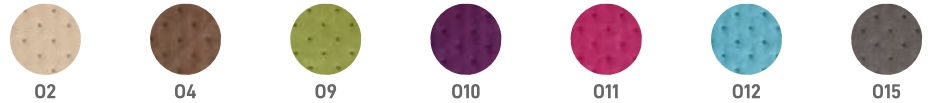
07

ELASTIKA FR (Go2)



08

ORUGA (Go2)



09

NILO (Go2)



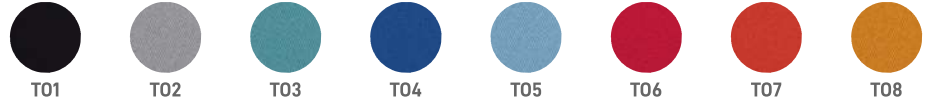
10

MADISON (Go2)



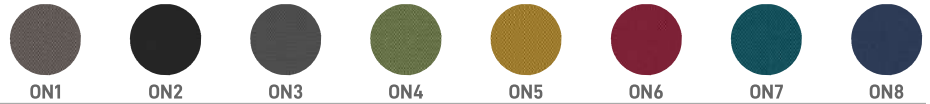
11

TONAL (Go2)



12

ONE (Go2)



13

VALENCIA (Go3)



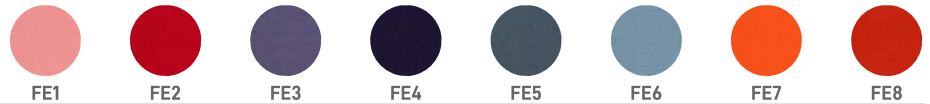
14

DEKORA (Go3)



15

FELICITY (Go3)



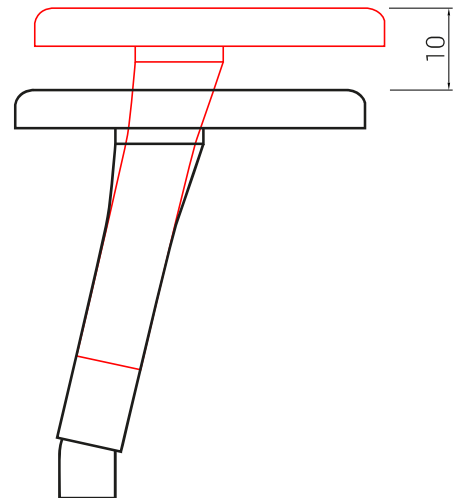
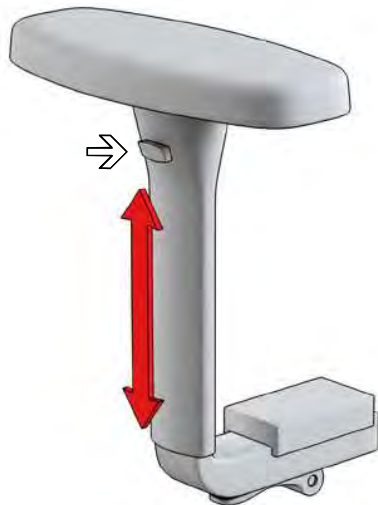
16

LEATHER (Go4)



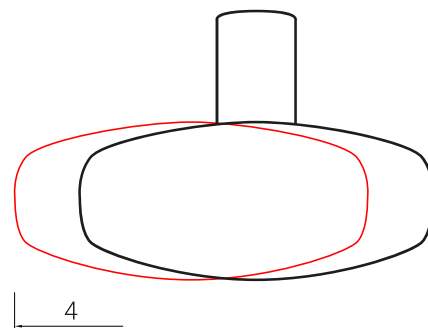
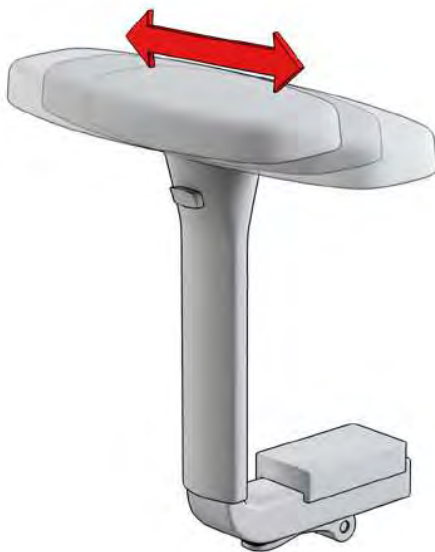
1. Arms

BR12-BR13



HEIGHT ADJUSTMENT

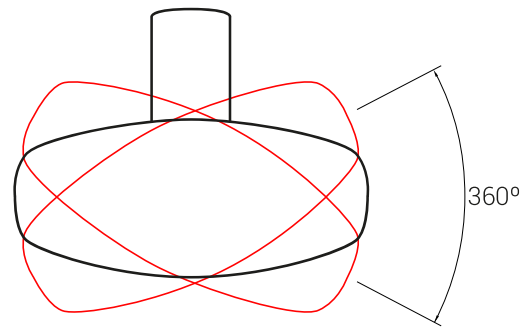
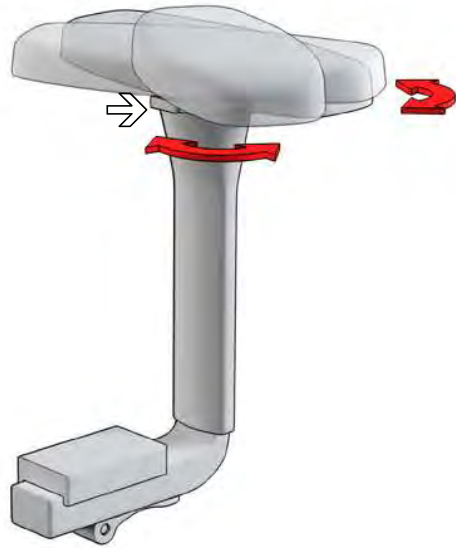
Press the button on the armrest (arrow) and without releasing it, adjust the height of the armrest. Once in the desired position, release the button.



ADJUSTING THE DEPTH OF THE ARMREST

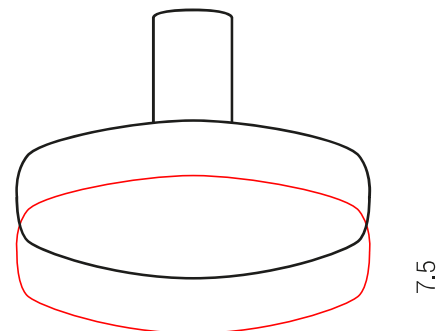
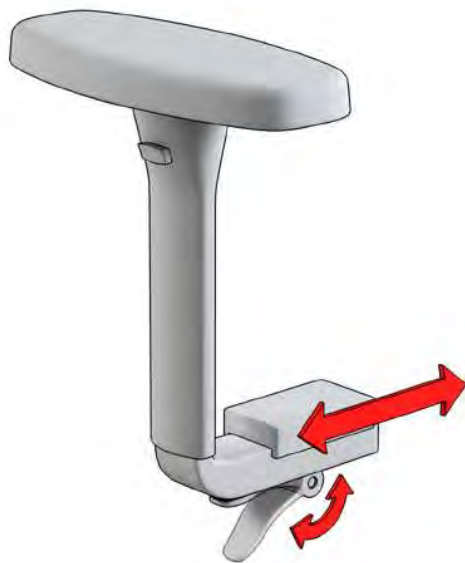
By pressing firmly on the armrest, the armrest is pushed forward or backward to the desired position. It moves 4 cm in each direction.

BR12-BR13



ARMREST ROTATION

Press the armrest button (arrow) and, without releasing it, adjust the angle of the armrest. Once in the desired position, release the button.

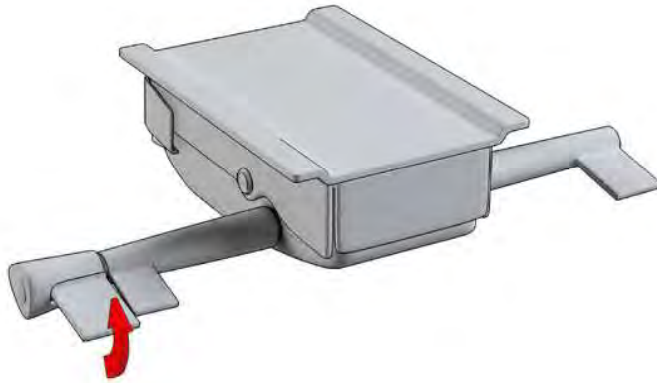


ARM WIDTH ADJUSTMENT

We move down the handle at the bottom of the arm. We move the arm to the desired position. Finally, we move up the handle.

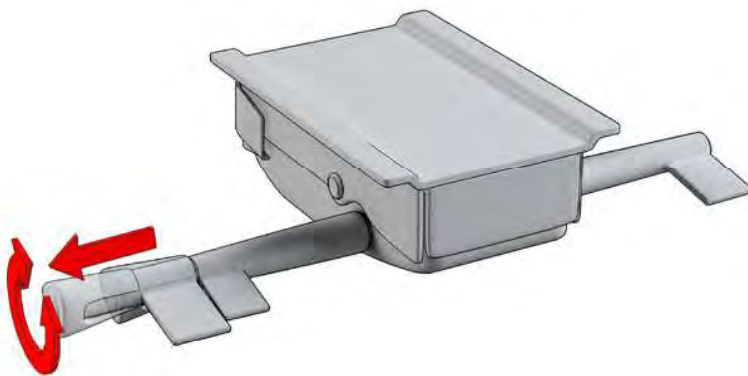
2. Mechanisms

SYNCHRO-SLIDE MECHANISM 24H



LIFTING BY GAS LIFT

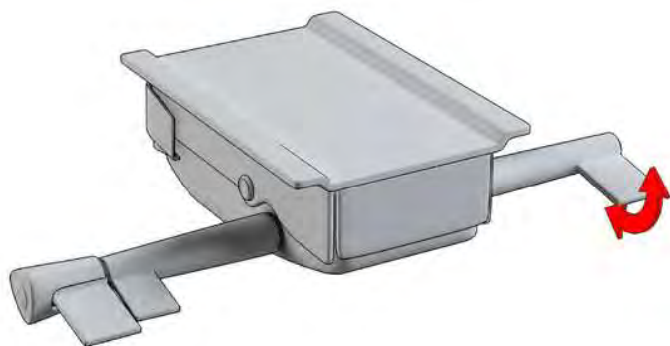
By lifting the lever, the gas lift is unlocked. Without weight, the chair lifts up. When the user is seated, the chair goes down. Once the lever is released, the gas lift is locked again.



BACKREST PRESSURE ADJUSTMENT (based on user weight)

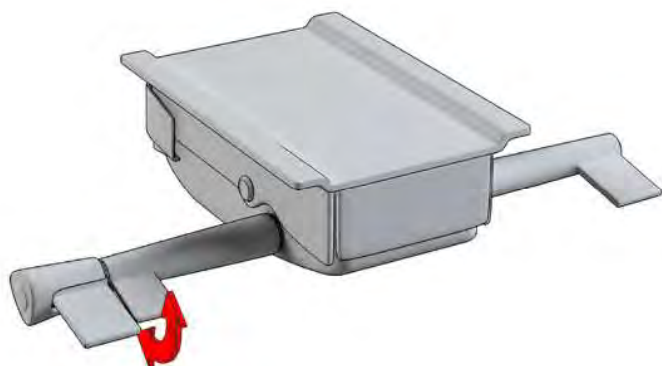
Simply move the right handle outward so that it can be unlocked. Turning the handle clockwise makes the backrest more resistant to the weight of the back. Turning the handle counter-clockwise makes the backrest less resistant to the weight of the back.

SYNCHRO-SLIDE MECHANISM 24H



SEAT/BACKREST TILT ADJUSTMENT (SYNCHRO)

By lifting the lever, the synchronization mechanism is released, which allows the angle of inclination of the seat and backrest to be changed synchronously when the user is seated. By moving the lever downwards, the backrest is locked in the desired position. To unlock it, simply lift the lever and apply weight with your back.



SEAT SLIDE ADJUSTMENT (SLIDING SYSTEM)

By moving the lever down, the seat is released and can be moved forward or backward. Once in the desired position, simply lift the lever, which will lock the seat.

SYNCHRO MECHANISM 24H



LIFTING BY GAS LIFT

By lifting the lever, the gas lift is unlocked. Without weight, the chair lifts up. When the user is seated, the chair goes down. Once the lever is released, the gas lift is locked again.



BACKREST PRESSURE ADJUSTMENT (based on user weight)

Simply move the right handle outward so that it can be unlocked. Turning the handle clockwise makes the backrest more resistant to the weight of the back. Turning the handle counter-clockwise makes the backrest less resistant to the weight of the back.



SEAT/BACKREST TILT ADJUSTMENT (SYNCHRO)

By lifting the lever, the synchronization mechanism is released, which allows the angle of inclination of the seat and backrest to be changed synchronously when the user is seated. By moving the lever downwards, the backrest is locked in the desired position. To unlock it, simply lift the lever and apply weight with your back.

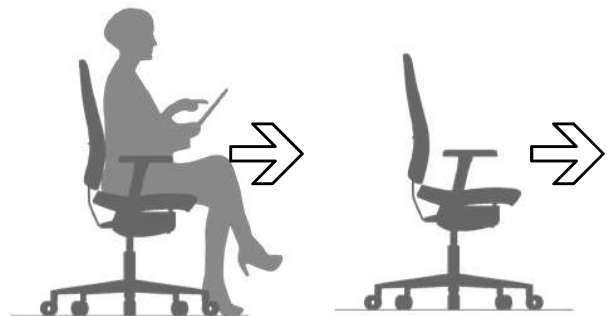
3. Wheels

HOLLOW SELF-BRAKING WHEELS

Adjustable safety braking system that applies a slight brake when the user stands up from the seat in order to prevent any movement of the chair when not in use. It has a screw at the bottom to adjust the braking force or deactivation of the braking system.

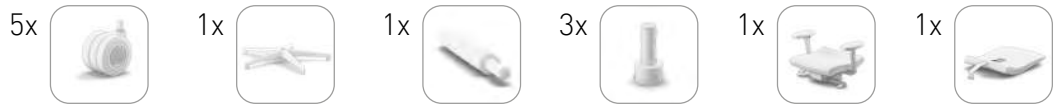


Adjustable safety braking system that applies a slight brake when the user stands up from the seat in order to prevent any movement of the chair when not in use. When the user is seated, the wheel can rotate freely and the chair can be moved. When the chair has no user, without weight, the wheel exerts a resistance to movement. It is equipped with a screw located in the lower part, which allows you to adjust the braking force or deactivate the brakes.

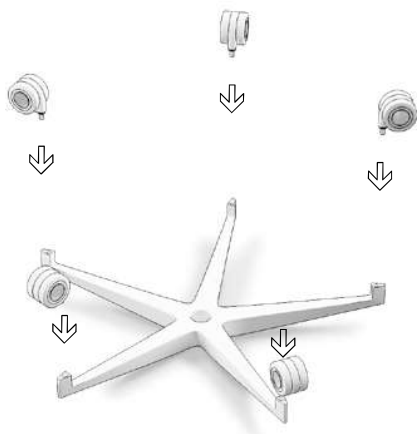


Using a cross-headed screwdriver, and turning the screw clockwise, the wheel is released. Whether the user is seated or not, the wheel rotates freely and the chair can be moved.

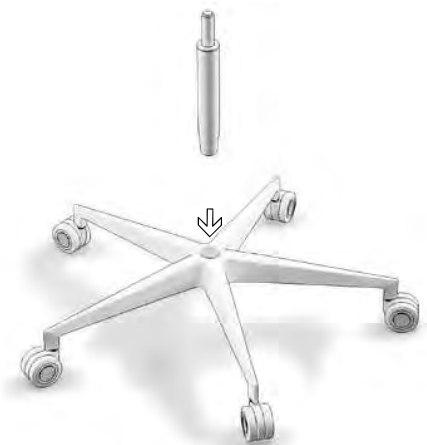
FLEXA 24H ASSEMBLY INSTRUCTIONS



1.



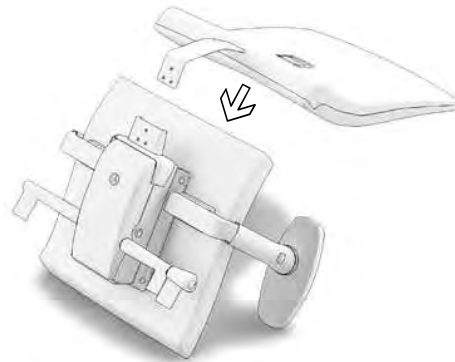
2.



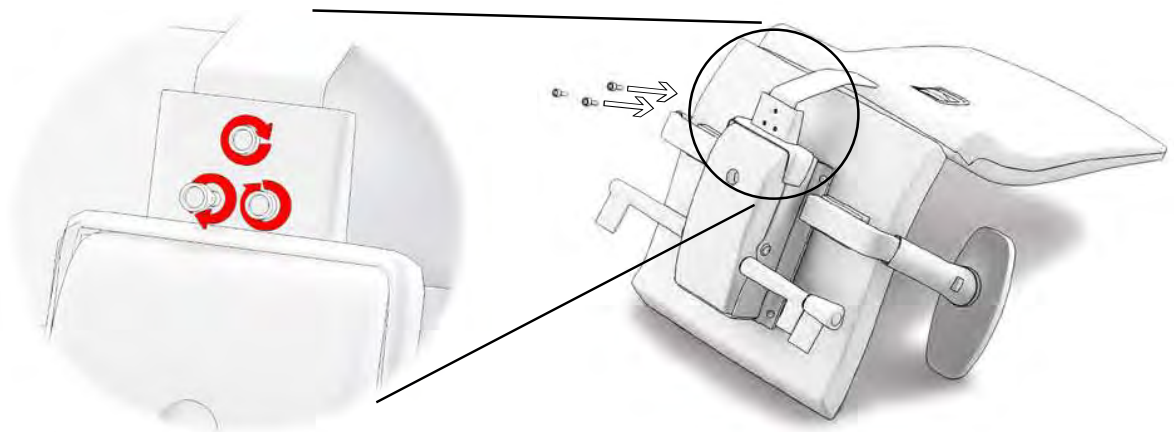
3.



4.



5.



6.

