

# MONDO

## E-KLIPSE A 006 COFFEE TABLE

SKU:ALMO2-601-E-KLIPSE A 006 COFFEE TABLE

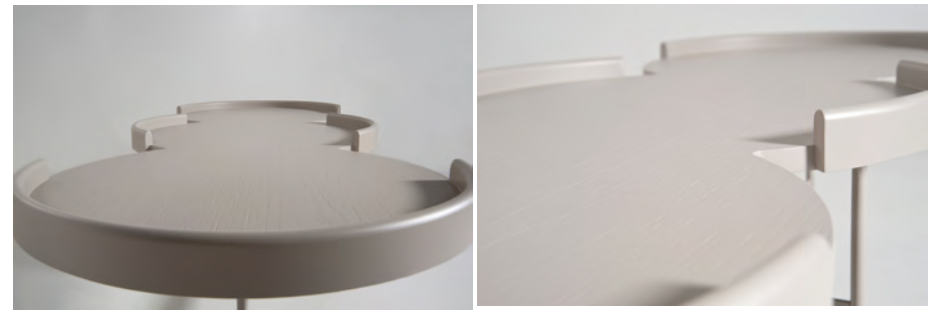
59" W x 22.8" D x 13.8" H

Lacquered low table with round tops and raised edges. The base is metallic. The e-clipse low table has a very light character with a very bold design.

This product is offered in other finishes. Contact us for dimensions and finishes customizations

### MATERIALS:

Top lacquered poro aperto – Metal base in lacquer or epoxy powder.



## lacquers

					
C1 total black	C20 anthracite	C6 dark olive gray	C21 olive grey	C27 earth brown	C11 olive brown
					
C25 desert brown	C3 ash gray	C7 military green	C9 mint	C12 hazelnut	C26 nougat
					
C13 light pistachio	C14 cream	C5 powder	C24 white	C10 sea blue	C23 dark blue
					
C19 orange	C33 mustard yellow	C15 gold yellow	C22 cherry red	C31 ruby red	C32 purple

## lacquers



C29  
light rosewood



C30  
rosewood



C34  
pale green



C35  
petrol grey



C36  
tanned skin



C37  
aubergine



C38  
dark coral



C39  
dark petrol



C40  
terracotta

## woods



oak 11  
natural oak



oak 12  
light oak



oak 13  
black oak



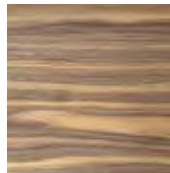
oak 14  
light chocolate oak



oak 15  
dark olive grey oak



american walnut



walnut canaletto



veneer  
smoked eucalyptus

## epoxy powder

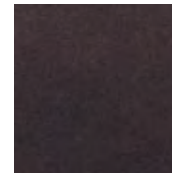
only for metal parts



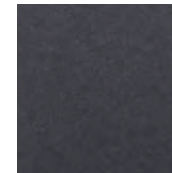
71946  
brown katmai



88674  
light broze



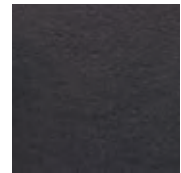
77566  
mef rame



74546  
nero akita



47290  
bronzo arnavi



35825  
ragg brown



88634  
dark bronze



36136  
rust rame



41113  
gold karkar



65656  
ancient brass



76606  
grigio langila