

Dalia S M_M TS Chair

SKU: MIMODJ-401-S1851SM_M

Product type: Indoor chair

21.3" W x 23.6" D x 32.7" H - 18.5" SH

Dalia chair with four leg base in lacquered or chrome metal.

Shell upholstered in leather, faux leather or fabric.

MATERIALS: The upholstery is available leather, fabric. or COM

FINISHES:leg base in lacquered or chrome metal.

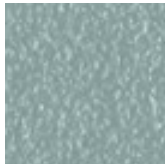


Colors and Materials

Structure



Papaya orange steel



Light blue metal



White steel



Bronze metal



Ash grey metal



Sand steel



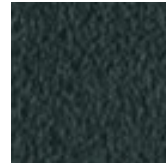
Fango steel



Golden yellow metal



Pastel yellow steel



Grafite metal



Light grey steel



Brown steel



Black steel



Ocher steel



Facepowder pink metal



Red steel



Bulgaro red metal



Cherry red metal



Pine green steel



Sage green metal



Dark green metal



Chrome

Coating



Cotton Club fabric

14 Colors



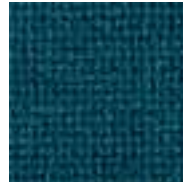
Fenix Wool fabric

16 Colors



Main Line Flax fabric

16 Colors



Manhattan fabric

13 Colors



Mirage fabric

15 Colors



Novabuk fabric

17 Colors



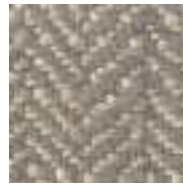
Tessuto Oceanic

13 Colors



Remix 3 fabric

19 Colors



Second fabric

11 Colors



Velvet Superb

15 Colors



Uniform Melange Fabric

7 Colors



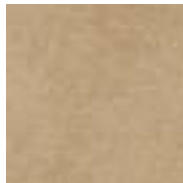
Visual fabric

13 Colors



Yoredale fabric

14 Colors



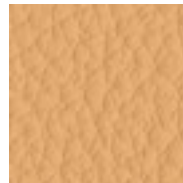
Vintage faux leather

12 Colors



Vintage leather

8 Colors



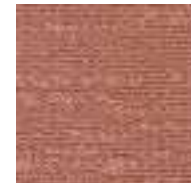
Fiore leather

21 Colors



Secret faux leather

23 Colors



Flame Fabric

7 Colors



Plain Fabric

7 Colors



Ouche Fabric

7 Colors



Network fabric

9 Colors