



## DAKRY BC CER 001 DINING TABLE

SKU:ALMO2-601-DAKRY BC CER 001 DINING TABLE

118.1" W x 47.2" D x 29.5" H

110.2" W x 47.2" D x 29.5" H

102.4" W x 43.3" D x 29.5" H

94.5" W x 43.3" D x 29.5" H

86.6" W x 43.3" D x 29.5" H

78.7" W x 39.4" D x 29.5" H

70.8" W x 39.4" D x 29.5" H

The dakry dining table has two curvy metal lacquered bases and comes in different sizes. The top is also available in different materials.

This product is offered in other finishes. Contact us for dimensions and finishes customizations

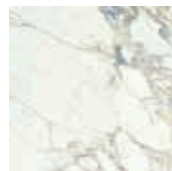
MATERIALS: Top in ceramic maxfine - Base with stripes in metal lacquer.



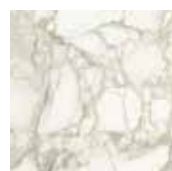
## ceramic maxfine



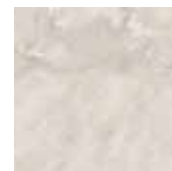
aosa green marble



arabescato



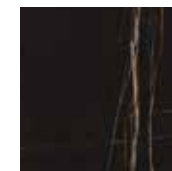
calacatta oro



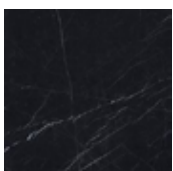
onice alabastrino



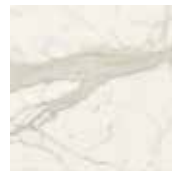
onice avorio



sahara noir



black marquina



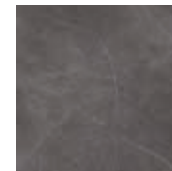
calacatta



white calacatta



gem pearl



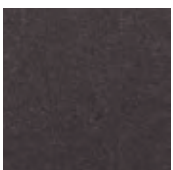
stone grey



calacatta grey

## epoxy powder

only for metal parts



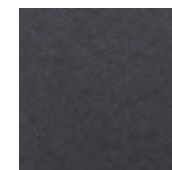
71946  
brown katmai



88674  
light broze



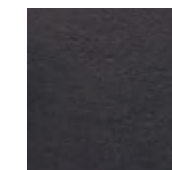
77566  
met rame



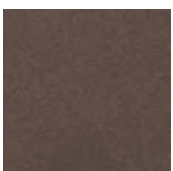
74546  
nero akita



47290  
bronzo arnavi



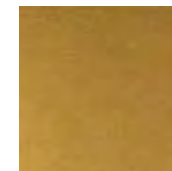
35825  
ragg brown



88634  
dark bronze



36136  
rust rame



41113  
gold karkar



65656  
ancient brass



76606  
grigio langila