



## DAKRY AC WCER 001 DINING TABLE

SKU:ALMO2-601-DAKRY AC WCER 001 DINING TABLE

118.1" W x 47.2" D x 29.1" H

110.2" W x 47.2" D x 29.1" H

102.4" W x 43.3" D x 29.1" H

94.5" W x 43.3" D x 29.1" H

86.6" W x 43.3" D x 29.1" H

78.7" W x 39.4" D x 29.1" H

70.8" W x 39.4" D x 29.1" H

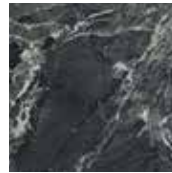
The dakry dining table has two curvy metal lacquered bases and comes in different sizes. The top is also available in different materials.

This product is offered in other finishes. Contact us for dimensions and finishes customizations

MATERIALS: Top in wood and ceramic - Base metal lacquered.



## ceramic maxfine



aosta green marble



arabescato



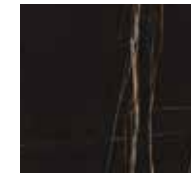
calacatta oro



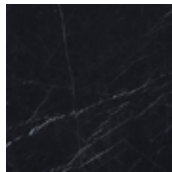
onice alabastrino



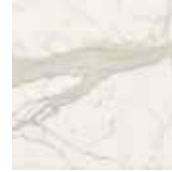
onice avorio



sahara noir



black marquina



calacatta



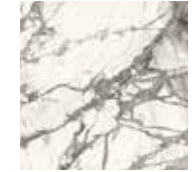
white calacatta



gem pearl



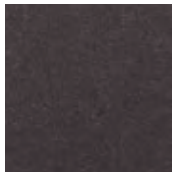
stone grey



calacatta grey

## epoxy powder

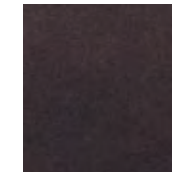
only for metal parts



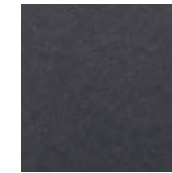
71946  
brown katmai



88674  
light broze



77566  
met rame



74546  
nero akita



47290  
bronzo arnavi



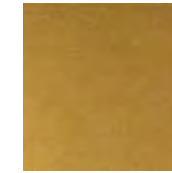
35825  
ragg brown



88634  
dark bronze



36136  
rust rame



41113  
gold karkar



65656  
ancient brass



76606  
grigio langila

## woods



oak 11  
natural oak



oak 12  
light oak



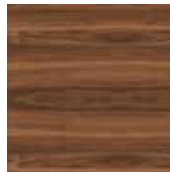
oak 13  
black oak



oak 14  
light chocolate oak



oak 15  
dark olive grey oak



american walnut



walnut canaletto



veneer  
smoked eucalyptus