



DAKRY AC CER 001 DINING TABLE

SKU:ALMO2-601-DAKRY AC CER 001 DINING TABLE

118.1" W x 47.2" D x 29.5" H

110.2" W x 47.2" D x 29.5" H

102.4" W x 43.3" D x 29.5" H

94.5" W x 43.3" D x 29.5" H

86.6" W x 43.3" D x 29.5" H

78.7" W x 39.4" D x 29.5" H

70.8" W x 39.4" D x 29.5" H

The dakry dining table has two curvy metal lacquered bases and comes in different sizes. The top is also available in different materials. This product is offered in other finishes. Contact us for dimensions and finishes customizations

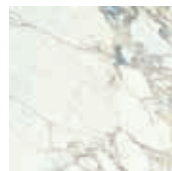
MATERIALS: Top in ceramic maxfine - Base metal lacquered..



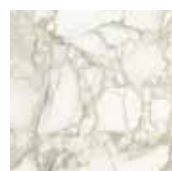
ceramic maxfine



aosa green marble



arabescato



calacatta oro



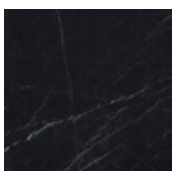
onice alabastrino



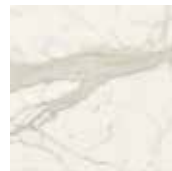
onice avorio



sahara noir



black marquina



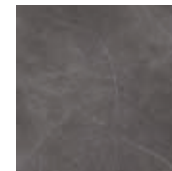
calacatta



white calacatta



gem pearl



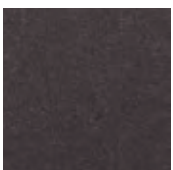
stone grey



calacatta grey

epoxy powder

only for metal parts



71946
brown katmai



88674
light broze



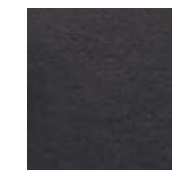
77566
met rame



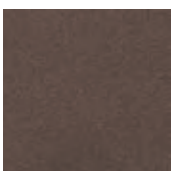
74546
nero akita



47290
bronzo arnavi



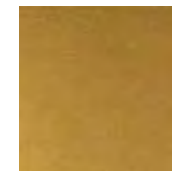
35825
ragg brown



88634
dark bronze



36136
rust rame



41113
gold karkar



65656
ancient brass



76606
grigio langila