

**Composición:** 100% Acrílico teñido en masa  
**Ancho:** 160cm  
**Acabado:** hidrófugo con tratamiento antimanchas.  
**Solidez a la luz:** 7/8  
**Garantía:** 5 años  
**Tolerancia:** valores susceptibles de tolerancia de +/- 5%

**Composition:** 100% solution dyed acrylic  
**Width:** 160 cm  
**Finish:** water repellent with a stain resistant treatment.  
**Light fastness:** 7/8  
**Warranty:** 5 years  
**Tolerance:** values subject to +/- 5% tolerance

### Limpieza y mantenimiento

Eliminar la suciedad mediante cepillado o aspirado suave del tejido. Lavar a temperatura máxima de 30° y jabón neutro. No utilizar disolventes ni detergentes abrasivos. No utilizar secadora. Planchado máximo a 150°. No admite lavado en seco.

### Maintenance and cleaning

Remove dirt by softly brushing or vacuuming the fabric. Wash at 30° max. with a mild soap. Do not use solvents or abrasive detergents. Do not tumble dry. Iron up to 150° max. Do not dry clean.



Resistente al agua  
Water resistant



Resistente a las manchas  
Stain resistant



Resistente al moho  
Mould resistant



Fuerte y duradero  
Durable and strong



Aislante  
Non-conductive



Fácil de limpiar  
Easy to clean



Protección UV  
UV protection



Desinfectable  
Disinfectable



Resistente a los rayos UV  
UV resistant



Limpiable con lejía  
Bleach cleanable

BATYLINE

TEXYLOOP<sup>®</sup>  
A CLOREDDIP INDUSTRY

Serge Ferrari

**Composición:** Composite PVC – fibras sintéticas  
**Ancho:** 180cm  
**Garantía:** 5 años  
**Reciclabilidad:** 100% por el sistema Taxyloop  
**Sistema de gestión de calidad:** ISO 9001  
**Sistema de gestión medioambiental:** ISO 14001

**Composition:** Composite PVC-synthetic fibres  
**Width:** 180 cm  
**Warranty:** 5 years  
**Recyclability:** 100% by Taxyloop method  
**Quality system:** ISO 9001  
**Environmental system:** ISO 14001

### Limpieza y mantenimiento

Quitar el polvo al tejido con un aspirador o un cepillo suave no metálico. Lavar con un cepillo suave o una esponja utilizando agua jabonosa. Aclarar abundantemente con agua clara (chorro de agua). Dejar que se seque bien el tejido al aire libre en posición desplegada. Si el tejido puede desprenderse de su soporte, la limpieza puede realizarse a máquina a una temperatura no superior a 40°C.

### Maintenance and cleaning

Remove dust from the fabric with a vacuum cleaner or soft, non-metallic brush. Wash with a soft brush or a sponge, using soapy water. Rinse copiously (spray) with clean water. Allow the fabric to air dry completely, well spread out. If the textile can be removed from its base, it may be machine-washed at a temperature no higher than 40°C.



Fácil cuidado  
Easy care



Resistente al desgarro  
Tear resistant



Resistente a los rayos UV  
UV resistant



Resistente al moho  
Mould resistant



Resistente a la deformación  
Deformation resistance



**G1 | 22**  
20000 Cycles  
Martindale



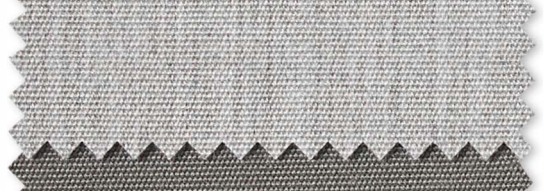
**G1 | 21**  
20000 Cycles  
Martindale



**G1 | 1101**  
20000 Cycles  
Martindale



**G1 | 1103**  
20000 Cycles  
Martindale



**G1 | 1119**  
20000 Cycles  
Martindale



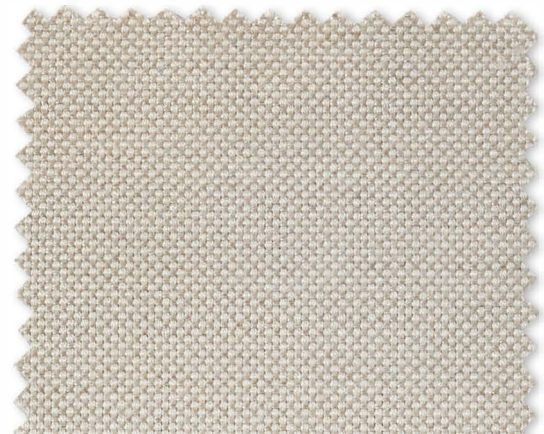
**G1 | 1201**  
20000 Cycles  
Martindale



**G2 | 1086**  
25000 Cycles  
Martindale



**G2 | 1088**  
20000 Cycles  
Martindale



**G2 | 1269**  
20000 Cycles  
Martindale



**G2 | 1253**  
20000 Cycles  
Martindale



**G2 | 1255**  
20000 Cycles  
Martindale



**G2 | 1252**  
25000 Cycles  
Martindale



**G2 | 1256**  
20000 Cycles  
Martindale



**G2 | 1270**  
20000 Cycles  
Martindale



**G2 | 1271**  
20000 Cycles  
Martindale





**G2 | 1273**  
20000 Cycles  
Martindale

**G2 | 1272**  
20000 Cycles  
Martindale

**G2 | 1275**  
20000 Cycles  
Martindale



**G2 | 1268**  
20000 Cycles  
Martindale

**G2 | 1263**  
20000 Cycles  
Martindale

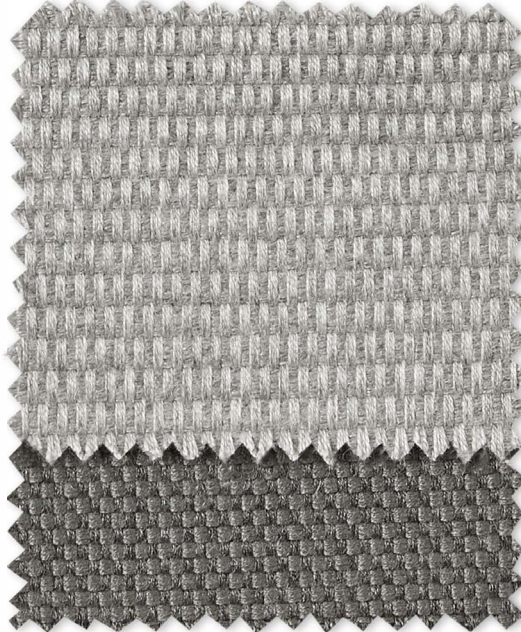
**G2 | 1274**  
20000 Cycles  
Martindale



**G3 | 1276**  
60000 Cycles  
Martindale

**G3 | 1277**  
60000 Cycles  
Martindale

**G3 | 1278**  
60000 Cycles  
Martindale



**G3 | 1279**  
60000 Cycles  
Martindale

**G3 | 1280**  
60000 Cycles  
Martindale





**G2 | 35**  
120000 Cycles  
Martindale

**G2 | 37**  
120000 Cycles  
Martindale

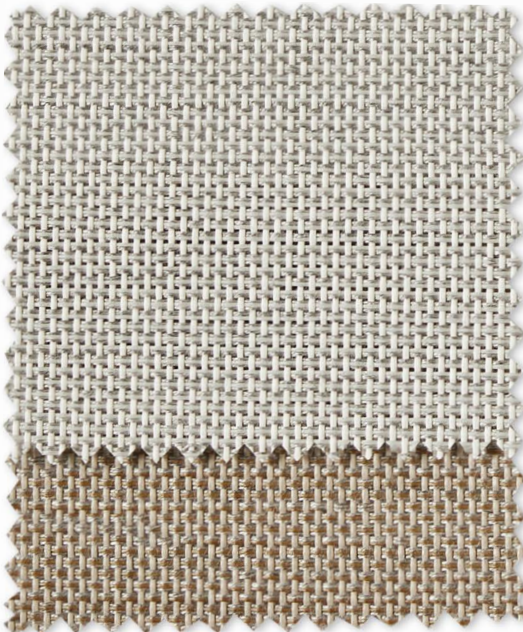
**G2 | 39**  
120000 Cycles  
Martindale



**G2 | 40**  
120000 Cycles  
Martindale

**G2 | 38**  
120000 Cycles  
Martindale

**G2 | 57**  
120000 Cycles  
Martindale



**G3 | 13**  
120000 Cycles  
Martindale

**G3 | 09**  
120000 Cycles  
Martindale



**G3 | 10**  
120000 Cycles  
Martindale

**G3 | 11**  
120000 Cycles  
Martindale

## Powder coated aluminium

*With epoxy resin used as a binder to increase resistance to corrosion, abrasion and chemical agents.*

### Maintenance and cleaning

*Use soft cloths or sponges that will not scratch the surface with soap and water or neutral detergents diluted in water; never use abrasive products. Then rinse with clean water and dry with a cloth to prevent the detergent from affecting the material.*



Blanco nieve 70  
White snow 70



Crema 34  
Cream 34



Arena 74  
Sand 74



Gristaupe 60  
Taupe grey 60



Óxido 75  
Rust 75



Gris metalizado 56  
Gunmetal grey 56



Terracota 72  
Terracotta 72



Verde ficus 73  
Green ficus 73



Azul cielo 71  
Blue sky 71



Negro 59  
Black 59