



## Capri Plus Chair

SKU: ALMOEC-401-Capri Plus

Product type: Outdoor Chair

16.5" W x 20.5" D x 30.75" H - 17.25" SH

Stackable chair with hand-braided seat with materials manufactured exclusively in Alutec.  
Painted aluminum structure for outdoor use.  
Design for the hospitality industry.

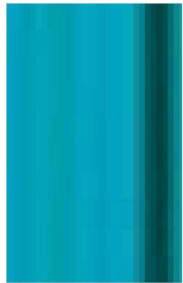
MATERIALS: Woven  
FINISHES: Aluminum



## TRENZADO / WOVEN / TRESSÉ



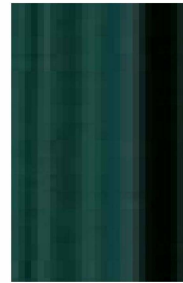
**FSA**  
1TF BLANCO



**FSA**  
2TF AZUL



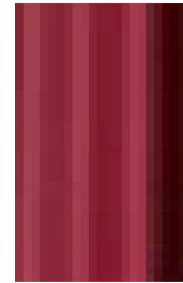
**FSA**  
3TF ROJO



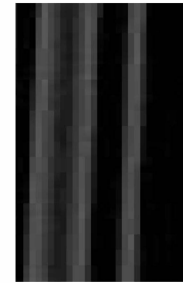
**FSA**  
4TF VERDE



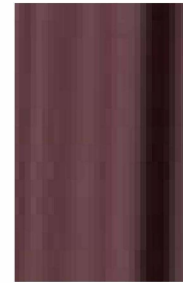
**FSA**  
5TF BEIGE



**FSA**  
6TF BURDEOS



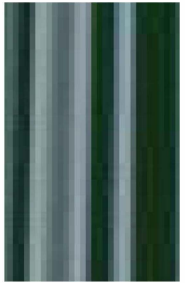
**FSA**  
7TF NEGRO



**FSA**  
8TF MARRÓN



**FSA**  
9TF MARINO



**FSA**  
13TF GRIS



**FSM**  
2TN MARRÓN



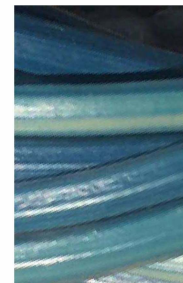
**FSM**  
3TN GRIS



**FSA MIX**  
1TX NATURAL



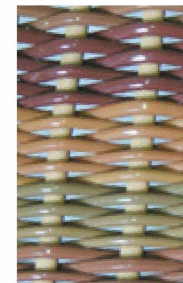
**FSA MIX**  
3TX VERDE



**FSA MIX**  
4TX AZUL



**FSA MIX**  
5TX GRIS



**FIBRA VINTAGE**  
1TE



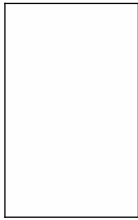
**1TD**

Contact us for COM/COL requirements and instructions.

Please be aware that the actual colors might vary from what you see on your screen, as monitor settings can differ.

## ACERO Y ALUMINIO / ALUMINIUM & STEEL / ALUMINIUM ET ACIER

PINTURA / PAINT / PEINT



**1PL**  
RAL9010



**3PL**  
RAL3000



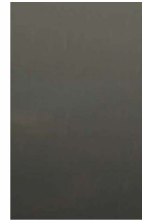
**4PL**  
RAL6019



**5PL**  
RAL1019



**7PL**  
RAL9005



**8PL**  
RAL7024



**9PL**  
RAL9006



**10PL**  
RAL9006



**13PL**  
RAL6003



**15PL**  
RAL1015



**17PL**  
RAL8012



**18PL**  
RAL8014

MARTELÉ / HAMMERED / MARTELÉE



**1MT**  
BLACK



**2MT**  
COPPER

Please be aware that the actual colors might vary from what you see on your screen, as monitor settings can differ.