

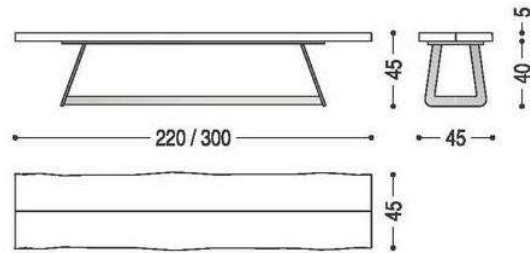
# CALLE CULT BENCH

SKU:RIMO20-402-CALLE CULT BENCH



Bench with seat made from hardwood with closely spaced-slats and natural edges combined with a light iron frame composed of two sledge legs and a central bar. Finish: base of oil / natural wax of vegetable origin with pine extracts.

Bench Sizes:  
86.5"/118"L x 17.75"W x 17.75"H



Diagrams above are shown in centimeters:  
220/300W x 45D x 45H



Finish: base of oil / natural wax of vegetable origin with pine extracts.

WOOD AND FINISHES



VULCANO OAK



WHITENED OAK  
WITH KNOTS WAX



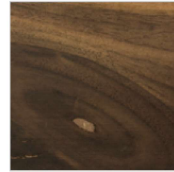
ASH GREY  
PIGMENTED OAK  
WITH KNOTS



WHITE MILK  
PIGMENTED OAK  
WITH KNOTS



OAK WITH KNOTS



WALNUT WITH  
KNOTS



CEDAR VULCANO

METAL AND FINISHES



RAL 3020 TRAFFIC  
RED



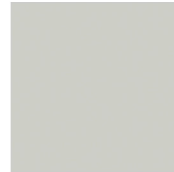
RAL 9005 JET BLACK



RAL 8019 GREY  
BROWN



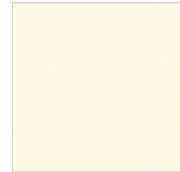
RAL 7037 DUSTY  
GREY



RAL 7035 LIGHT GREY



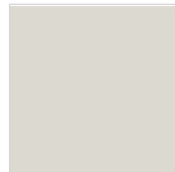
RAL 9016 TRAFFIC  
WHITE



RAL 9010 PURE  
WHITE



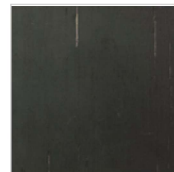
RAL 1013 OYSTER  
WHITE



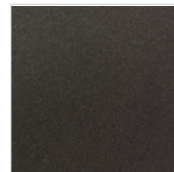
RAL 9002 GREY  
WHITE



RAL 9001 CREAM  
WHITE



NATURAL IRON,  
OILED (STANDARD  
VERSION)



IRON "IRONDUST"  
LACQUERED